

HARD  BOTTOMS
FLOORING

Canon

AUTHORIZED DEALER
COPY & FAX MACHINES • LASER PRINTERS
WIDE FORMAT PRINTERS

 O'SHEA
PROPERTIES

**3600 VETERANS
HIGHWAY**

**RETAIL & WAREHOUSE SPACE
2,000 SF**

BOHEMIA, NEW YORK

RETAIL & WAREHOUSE SPACE

2,000 SF

80% Showroom
20% Warehouse



NEWLY RENOVATED!

New Flooring
New LED Lighting
New Paint
Ready for Business

CONVENIENT LOCATION

Proximity to Long Island MacArthur Airport
Proximity to Long Island Rail Road (Ronkonkoma Station)
Proximity to Restaurants, Hotels, Banks, and Transportation



INQUIRE NOW!

Available Immediately



PROPERTY HIGHLIGHTS

Corner Storefront in Shopping Center
Rear Double Man Door for Deliveries
Excellent Exposure & Road Frontage
Veterans Highway Frontage
24-Hour Doorstep Parking
Ample Parking

AN IDEAL LOCATION TO OPERATE YOUR BUSINESS

Veterans Highway is an easily accessible location for you and your customers! Located near the airport, train station, and major highways.

Plus, enjoy access to nearby restaurants, coffee shops, endless shopping, and more.



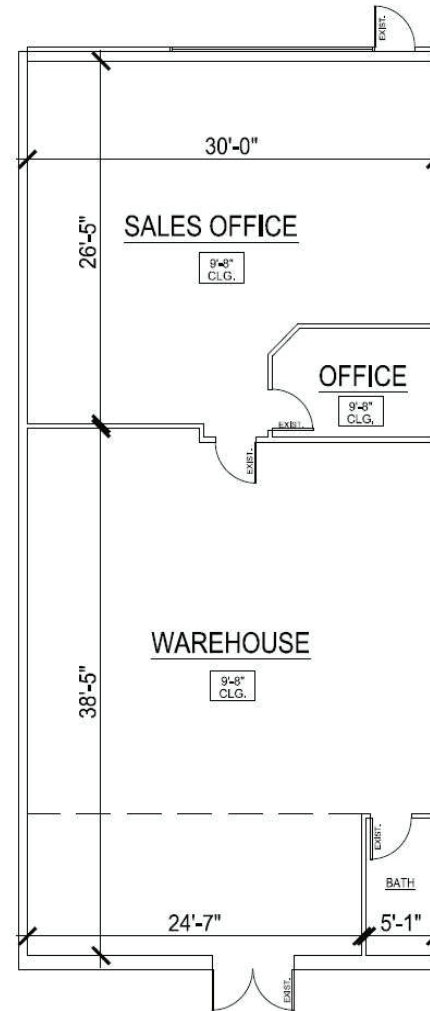
MORE POWERFUL PROPERTY HIGHLIGHTS

- 2,000 SF Showroom/Retail Use
- 80% Showroom / 20% Warehouse
- Available Immediately
- Newly Renovated
- New Flooring
- New LED Lighting
- New Paint
- Rear Double Man Door for Deliveries
- Corner Storefront Location
- Excellent Exposure & Road Frontage
- Door-step Parking & 24/7 Access

MARKET AERIAL VIEW



2,000 SF FLOOR PLAN



FOR FURTHER INFORMATION, PLEASE CONTACT

Katie O. Rivas
Phone: 631.218.8318
kbo@osheaproperties.com

4155 Veterans Highway, Suite 13
Ronkonkoma, NY 11779
www.osheaproperties.com