

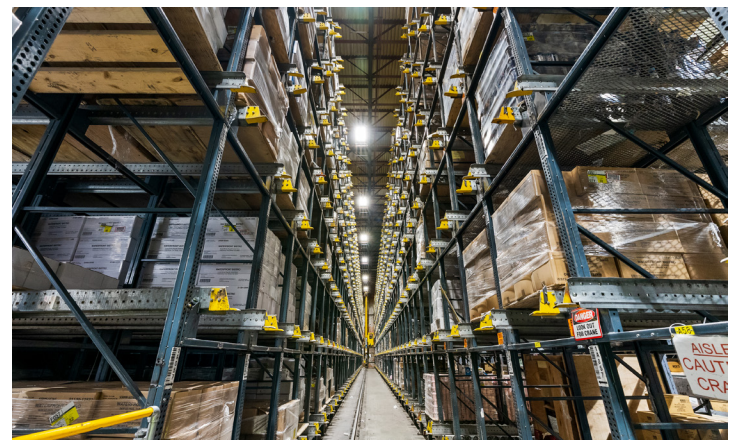
111 Reese Avenue  
Harrington, Delaware

## A 220,973 SF COLD STORAGE FACILITY IN HARRINGTON, KENT COUNTY, DELAWARE

- Situated on 24.6 +/- acres
- 220,973 SF
  - Hi Rise Freezer - 113,084 SF @ 48'
  - Conventional Freezer - 51,556 SF @ 31'
  - Dairy Freezer - 13,543 SF @ 31'
  - Remaining SF dock, office & miscellaneous
- Tailgate loading for twenty-five (25) trucks
  - Rail Dock (Delmarva Central Railroad)
  - Refrigerated docks
- 160 surface spaces
- Column spacing 40' to 90' spans
- Public water & sewer

For leasing information, please call

**Taylor Young**  
**484.362.2929**





# 111 Reese Avenue Harrington, Delaware



Taylor Young

CELL 610.202.8334

EMAIL [TYoung@HaydenREI.com](mailto:TYoung@HaydenREI.com)

- Power: 6,000 Amp, 480 volt, 3 phase
- More than 8mm cubic feet
- 30,027 pallet positions
- Sortation system
- 5 stacker cranes
- Masonry construction
  - Built in 1973, rebuilt following fire in 1979, high rise & dock rebuilt in 1988, warehouse in 1991, freezer in 1995
- Located immediately off Route 13 – S. Dupont Hwy
- Conveniently located 90 minutes from Philadelphia & Washington D.C. and 75 minutes from Baltimore



**MAGUIRE  
HAYDEN**  
REAL ESTATE COMPANY

Maguire Hayden is a privately held commercial real estate firm, acquiring office, industrial and mixed-use properties, improving, repositioning and professionally managing them.

## Maguire Hayden Real Estate Company

300 Four Falls  
300 Conshohocken State Road, Suite 200  
West Conshohocken, PA 19428

TEL 484.362.2929

FAX 484.362.2939

[MaguireHayden.com](http://MaguireHayden.com)

