

Concourse Business Park

18725 E Gale Ave, Suite 140, City of Industry, CA 91748

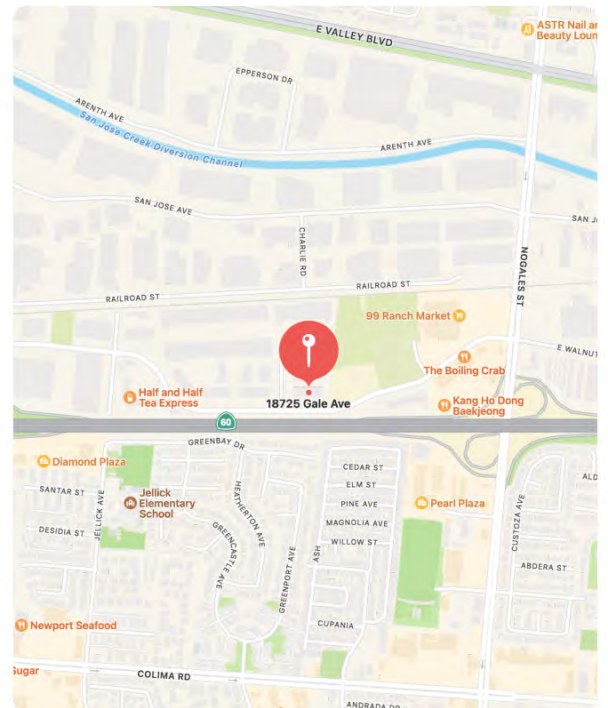


PROPERTY FEATURES

± 4,120 square feet

- Existing medical space
- Freeway visibility on Pomona Fwy (SR-60)
- Multiple retail uses
- 24/7 Security and patrol
- Fire sprinklers
- On-site property management
- Ample free surface parking

The information contained herein is derived from sources deemed reliable but neither Kander Pacific, Inc. nor owner guarantees its accuracy. The information is provided without representation or warranty.



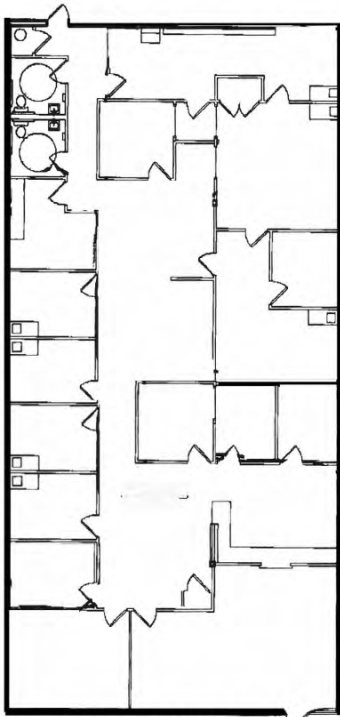
Darian Wang

Associate
(M): 909-282-8217
dwang@kanderpacific.com
DRE Lic#: 01922077



18725 E. Gale Ave, Suite 205
City of Industry, CA 91748
Corp Lic#: 02014105

www.kanderpacific.com



NOT TO SCALE



THE CONCOURSE
CITY OF INDUSTRY, CA

The information contained herein is derived from sources deemed reliable but neither Kander Pacific, Inc. nor owner guarantees its accuracy. The information is provided without representation or warranty.

Darian Wang

Associate
(M): 909-282-8217
dwang@kanderpacific.com
DRE Lic#: 01922077



18725 E. Gale Ave, Suite 205
City of Industry, CA 91748
Corp Lic#: 02014105

www.kanderpacific.com