

880-888 TOWN CENTER DRIVE | LANGHORNE, PA 19047

The Flynn Company | 1621 Wood Street, Philadelphia, PA 19103 | Phone (215) 561-6565 | www.flynnco.com | info@flynnco.com

FOR LEASE

- 42,000 SF building
- Built in 1991
- Two Suites Available:
 - 5,300 SF office
 - 6,045 SF office
- Loading can be created



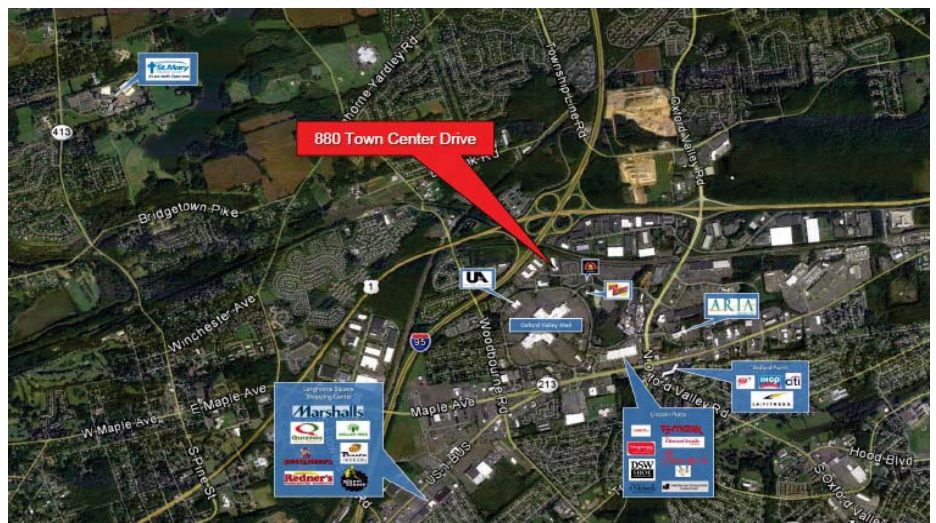
PROPERTY DETAILS

Ceiling Height: 18' clear

Parking: Four (4) cars per 1,000 SF

Sprinkler: Fully sprinklered, wet system

HVAC: Fully air-conditioned with rooftop package units



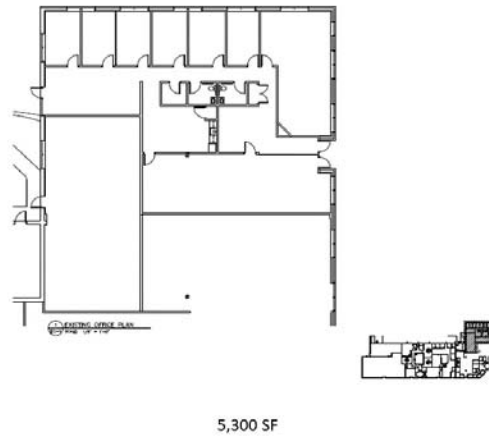
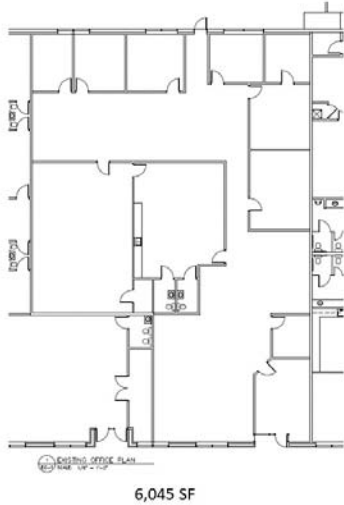
EXCLUSIVELY OFFERED BY:
The Flynn Company

Mike Borski, Sr.
215-561-6565 x120
mborski@flynnco.com

Brian Glancey, SIOR
215-561-6565 x191
bglancey@flynnco.com

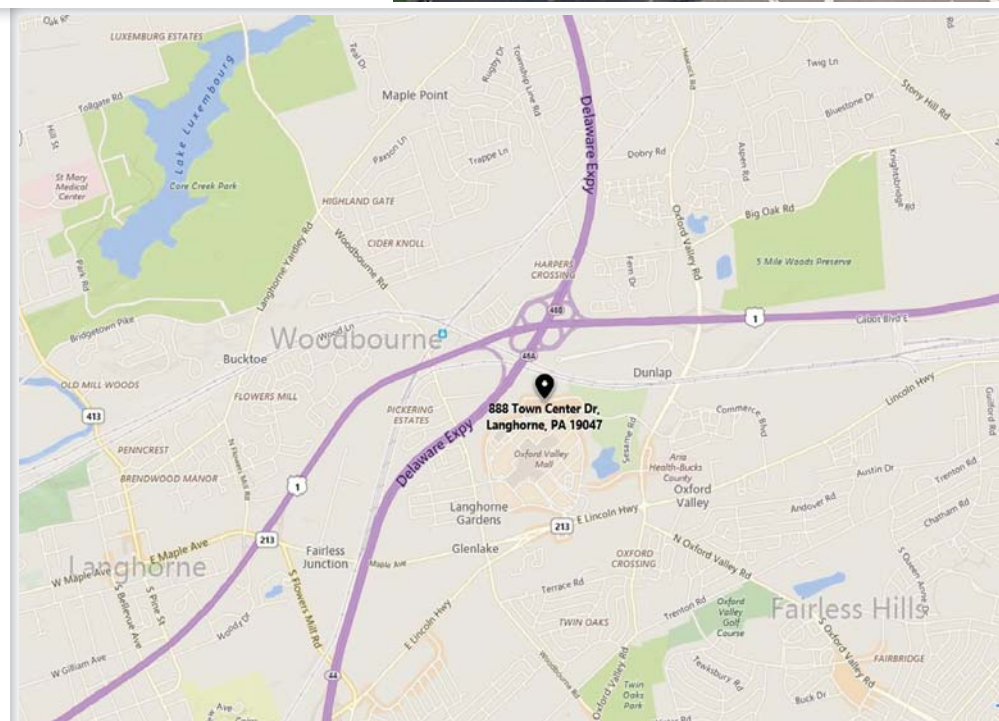
880-888 Town Center Drive | Langhorne, PA 19047

FLOOR PLAN



LOCATION

- Located minutes from Route 1 and I-95.
- Directly across from the Oxford Valley Mall.



EXCLUSIVELY OFFERED BY:
The Flynn Company

Michael Borski, Sr.
215-561-6565 x120
mborski@flynnco.com

Brian Glancey, SIOR
215-561-6565 x191
bglancey@flynnco.com