

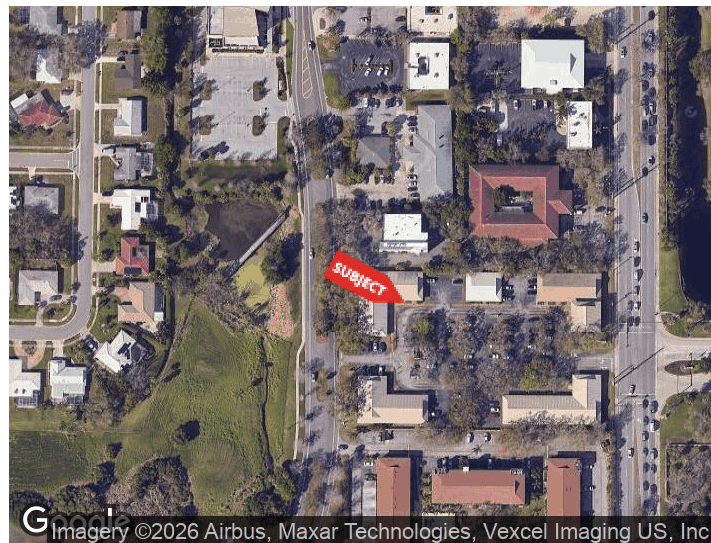


BENEVA SQUARE OFFICE SPACE IN GULF GATE

7182 CURTISS AVE
SARASOTA, FLORIDA 34231

PROPERTY HIGHLIGHTS

- Two available units: $\pm 4,700$ SF and $\pm 1,045$ SF
- Located in Beneva Square within Gulf Gate's office/medical corridor
- Flexible layouts suited for professional or medical use
- Existing buildouts with offices, conference areas, and breakrooms
- Convenient South Sarasota location near retail, dining, and major roadways



DEMOGRAPHICS 0.25 MILES 0.5 MILES 1 MILE

Total Households	266	1,063	4,320
Total Population	461	1,942	8,568
Average HH Income	\$109,545	\$105,543	\$107,001

For More Information

BRIAN SEIDEL

CCIM - Broker Associate
941 544 2970
brian@americanpropertygroup.com

BENEVA SQUARE OFFICE SPACE IN GULF GATE



OFFERING SUMMARY

Lease Rate:	\$15 SF/yr (NNN)
Building Size:	6,576 SF
Available SF:	4,700 SF
Lot Size:	27,794 SF
Year Built:	1984
Zoning:	OPI

PROPERTY OVERVIEW

American Property Group of Sarasota, Inc. presents 7182 Curtiss Ave, Sarasota, FL

Property Type: Office Space for Lease

Available Size: Approx. 4,700 SF

Located within Beneva Square in the Gulf Gate area of Sarasota, this approximately 4,700 SF office space offers a functional layout in a well-established office, professional, and medical corridor. Positioned in a desirable South Sarasota location, the property provides convenient access to surrounding neighborhoods, retail, dining, and major thoroughfares, making it an excellent option for a variety of professional or medical users.

The space features a strong mix of private offices and larger rooms that can easily serve as conference rooms, executive offices, or collaborative workspaces. With a reception area, waiting area, kitchenette, and dedicated breakroom space already in place, this layout is well suited for businesses seeking a move-in-ready office environment with flexibility for a range of operations.

BRIAN SEIDEL

CCIM - Broker Associate
941.544.2970
brian@americanpropertygroup.com



BENEVA SQUARE OFFICE SPACE IN GULF GATE



BRIAN SEIDEL

CCIM - Broker Associate
941.544.2970
brian@americanpropertygroup.com



BENEVA SQUARE OFFICE SPACE IN GULF GATE



BRIAN SEIDEL

CCIM - Broker Associate
941.544.2970
brian@americanpropertygroup.com

**AMERICAN
PROPERTY GROUP**
OF SARASOTA, INC.

BENEVA SQUARE OFFICE SPACE IN GULF GATE



AMERICAN
PROPERTY GROUP
OF SARASOTA, INC.

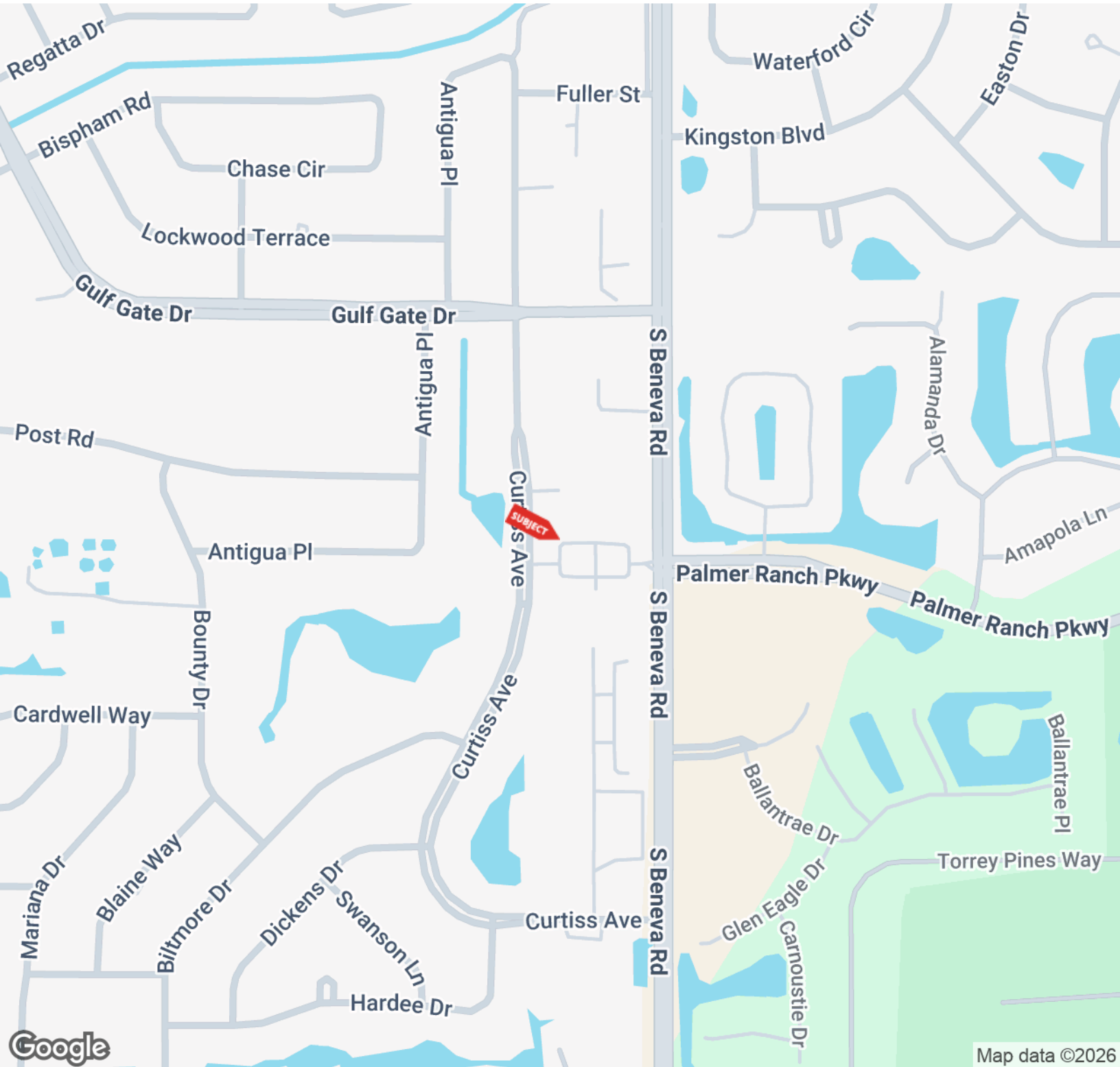
Floor plan is for illustrative purposes only. All dimensions are approximate and should be independently verified.

BRIAN SEIDEL

CCIM - Broker Associate
941.544.2970
brian@americanpropertygroup.com

**AMERICAN
PROPERTY GROUP**
OF SARASOTA, INC.

BENEVA SQUARE OFFICE SPACE IN GULF GATE

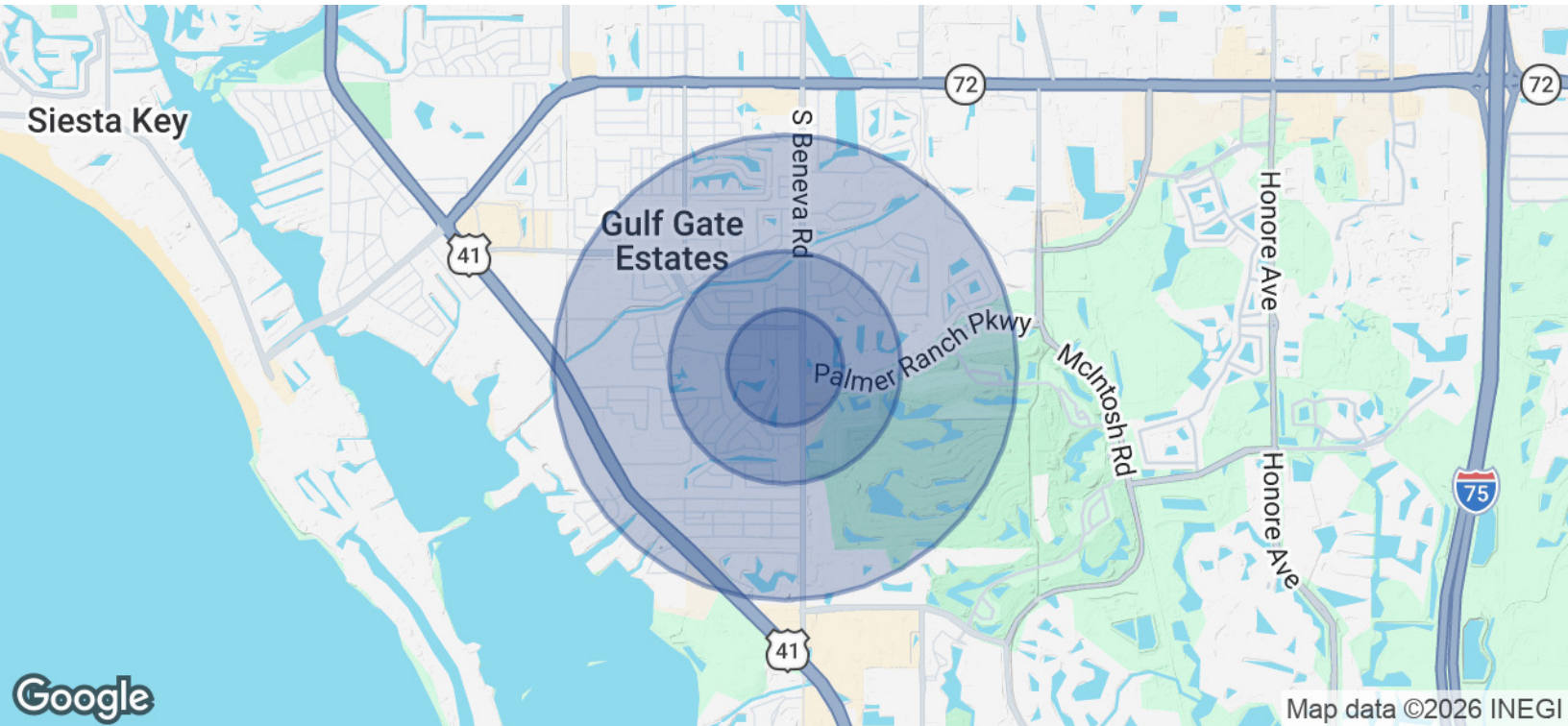


BRIAN SEIDEL

CCIM - Broker Associate
941.544.2970
brian@americanpropertygroup.com

**AMERICAN
PROPERTY GROUP**
OF SARASOTA, INC.

BENEVA SQUARE OFFICE SPACE IN GULF GATE



POPULATION	0.25 MILES	0.5 MILES	1 MILE
Total Population	461	1,942	8,568
Average Age	57.7	55.6	56.1
Average Age (Male)	51.5	50.4	51.1
Average Age (Female)	61.1	57.9	60.8

HOUSEHOLDS & INCOME	0.25 MILES	0.5 MILES	1 MILE
Total Households	266	1,063	4,320
# of Persons per HH	1.7	1.8	2.0
Average HH Income	\$109,545	\$105,543	\$107,001
Average House Value	\$422,822	\$363,124	\$369,020

2023 American Community Survey (ACS)

BRIAN SEIDEL

CCIM - Broker Associate
 941.544.2970
 brian@americanpropertygroup.com

