

# AVAILABLE

625 6<sup>TH</sup> AVENUE S., UNIT 390  
ST. PETERSBURG, FL

## PROPERTY OVERVIEW

- 1,837 RSF of medical office and administrative space available for LEASE or SALE. Lease rate and sale price available upon request.
- Fully built-out suite in the Bayboro 625 Sixth Medical Office Building available for immediate occupancy.
- In the heart of St. Petersburg's main medical corridor, particularly in the downtown area and the Innovation District.



# MEDICAL OFFICE SPACE AVAILABLE ST. PETERSBURG, FL



OPTIMAL OUTCOMES

Planning, Design, Development

727.895.8902

[www.optimal-outcomes.com](http://www.optimal-outcomes.com)

For More Information:

Anthony Boggini

727.424.0900

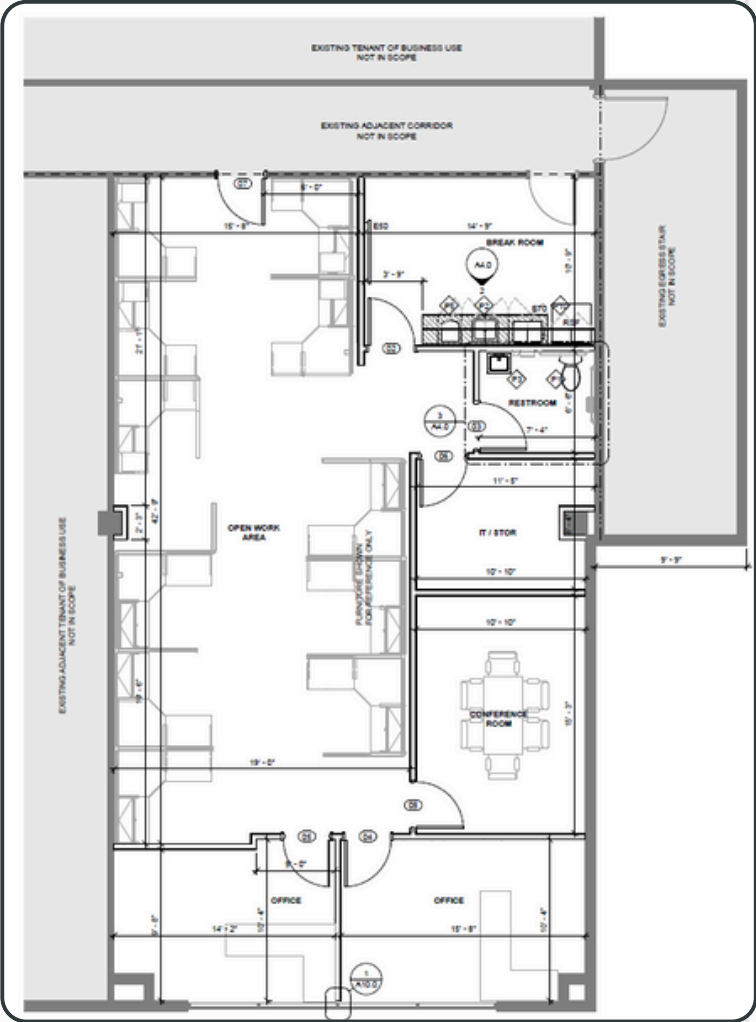
[anthonyb@optimal-outcomes.com](mailto:anthonyb@optimal-outcomes.com)



# LOCATION MAP



# FLOOR PLAN



# SITE HIGHLIGHTS

- Direct frontage on 6<sup>th</sup> Ave. S., approximately 700 ft from the Johns Hopkins All Children's Hospital and 0.2 mi from Bayfront Health St. Petersburg.
- Strong accessibility from I-175, as well as two access points from 7<sup>th</sup> St. S. and 6<sup>th</sup> St. S.
- This state-of-the-art building offers an attached 650-spot structured parking deck with complimentary valet service for patient convenience.
- Proximity to nearby amenities and demand drivers.



**OPTIMAL OUTCOMES**  
Planning, Design, Development

727.895.8902  
[www.optimal-outcomes.com](http://www.optimal-outcomes.com)

For More Information:

Anthony Boggini  
727.424.0900  
[anthonyb@optimal-outcomes.com](mailto:anthonyb@optimal-outcomes.com)