

RIDGEWOOD CENTER

FOR LEASE

33650 6TH AVE | FEDERAL WAY, WA



3,590 SF AVAILABLE (DIVISIBLE)



SHANE MAHVI, SIOR
(206) 336-5338
smahvi@andoverco.com

BRIAN BRUININKS, CCIM
(206) 336-5324
bbruininks@andoverco.com

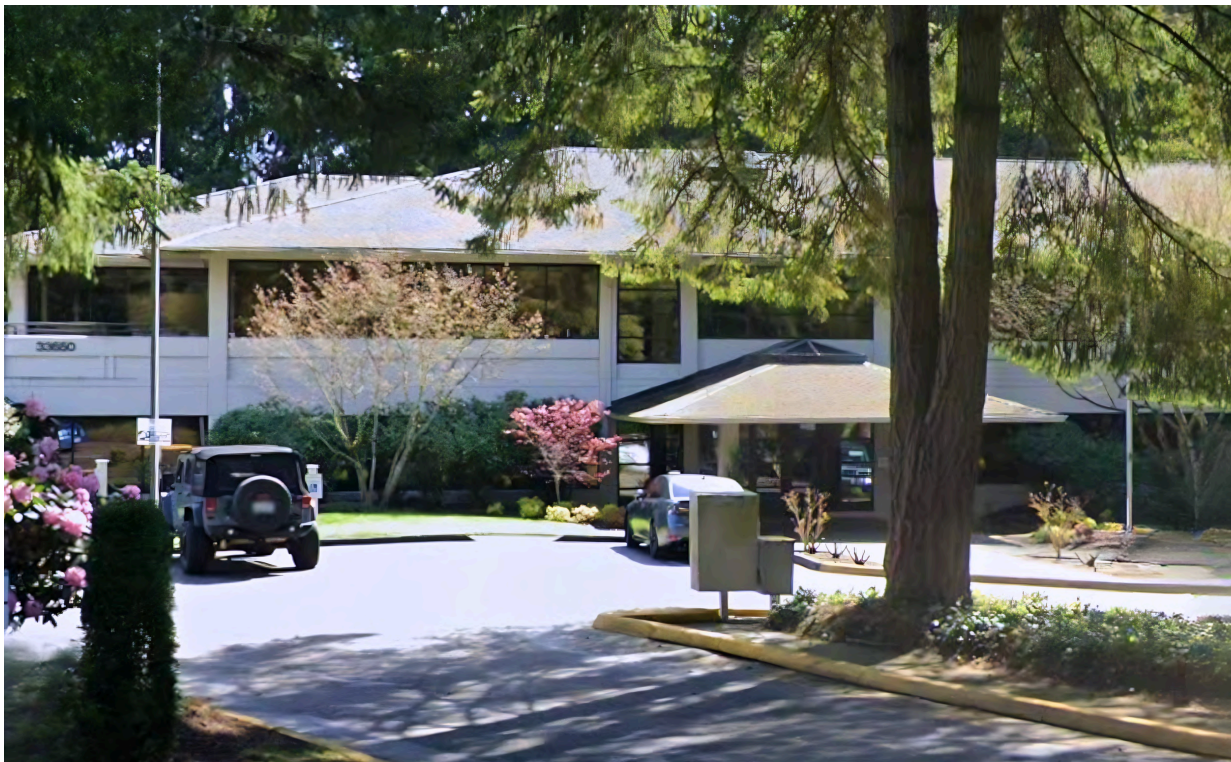
The information contained herein was obtained from sources believed reliable; however, The Andover Company, Inc. makes no guarantees, warranties or representations as to the completeness or accuracy thereof. The presentation of this property is submitted subject to errors, omissions, change of price or conditions, prior to sale or lease, or withdrawal without notice.



RIDGEWOOD CENTER

PROPERTY HIGHLIGHTS

- Exterior 4/1,000 RSF Parking Ratio
- Covered Garage 1/1,000 RSF Parking Ratio
- Close Proximity to The Commons Shopping Mall & St. Francis Hospital
- Located on Main Arterials; I-5 and SR-99
- Project Amenities Include Conference Room and Fitness Center
- Storage Available
- Incoming Renovations to Lobby and Common Areas
- Elevator & Stair Access
- Landlord Can Build Out Space Per Tenant's Specs as Needed
- **Available Now**



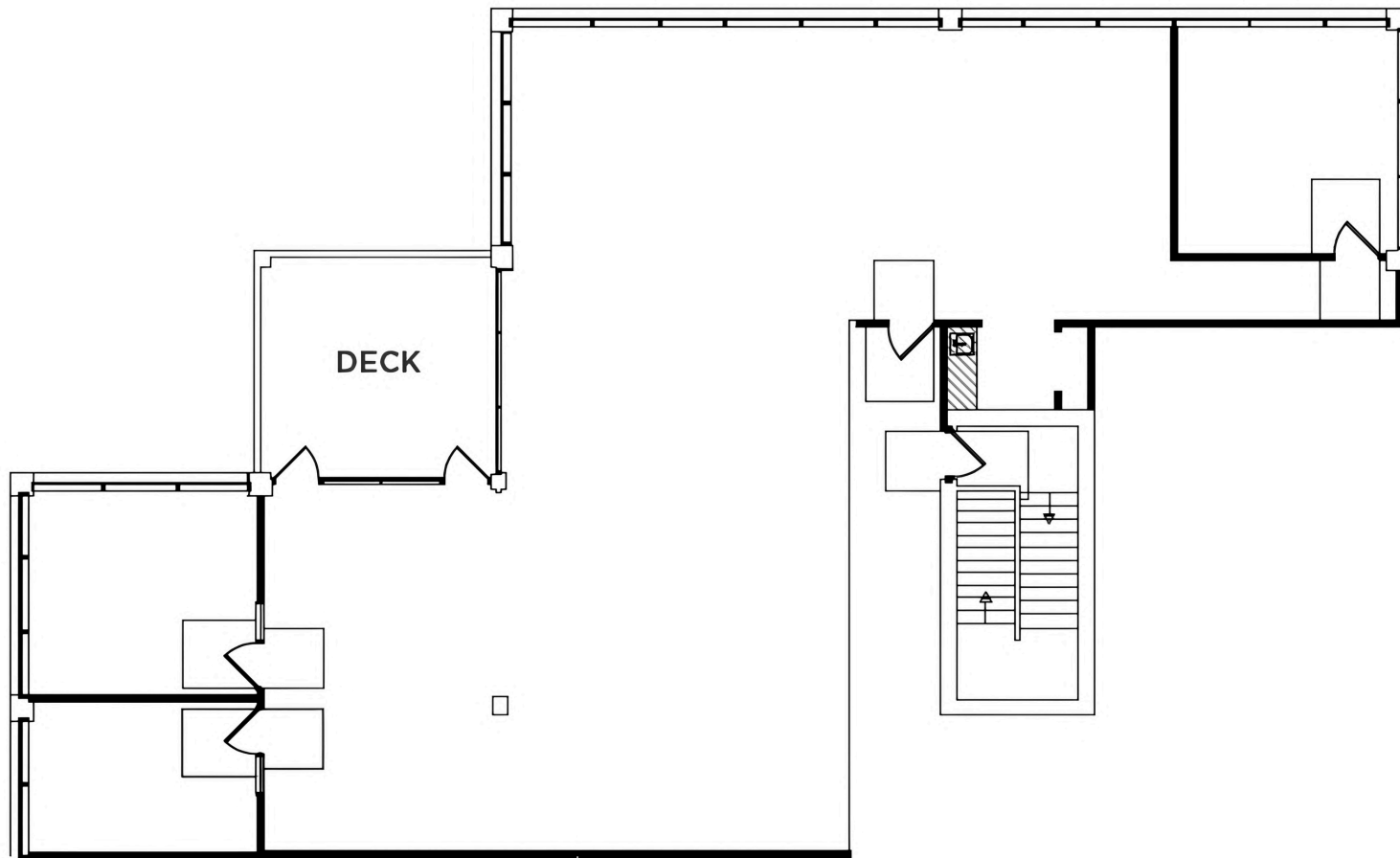
33650 6TH AVE | FEDERAL WAY, WA

SUITE 210

3,590 SF TOTAL | CURRENT PLAN

AVAILABLE NOW

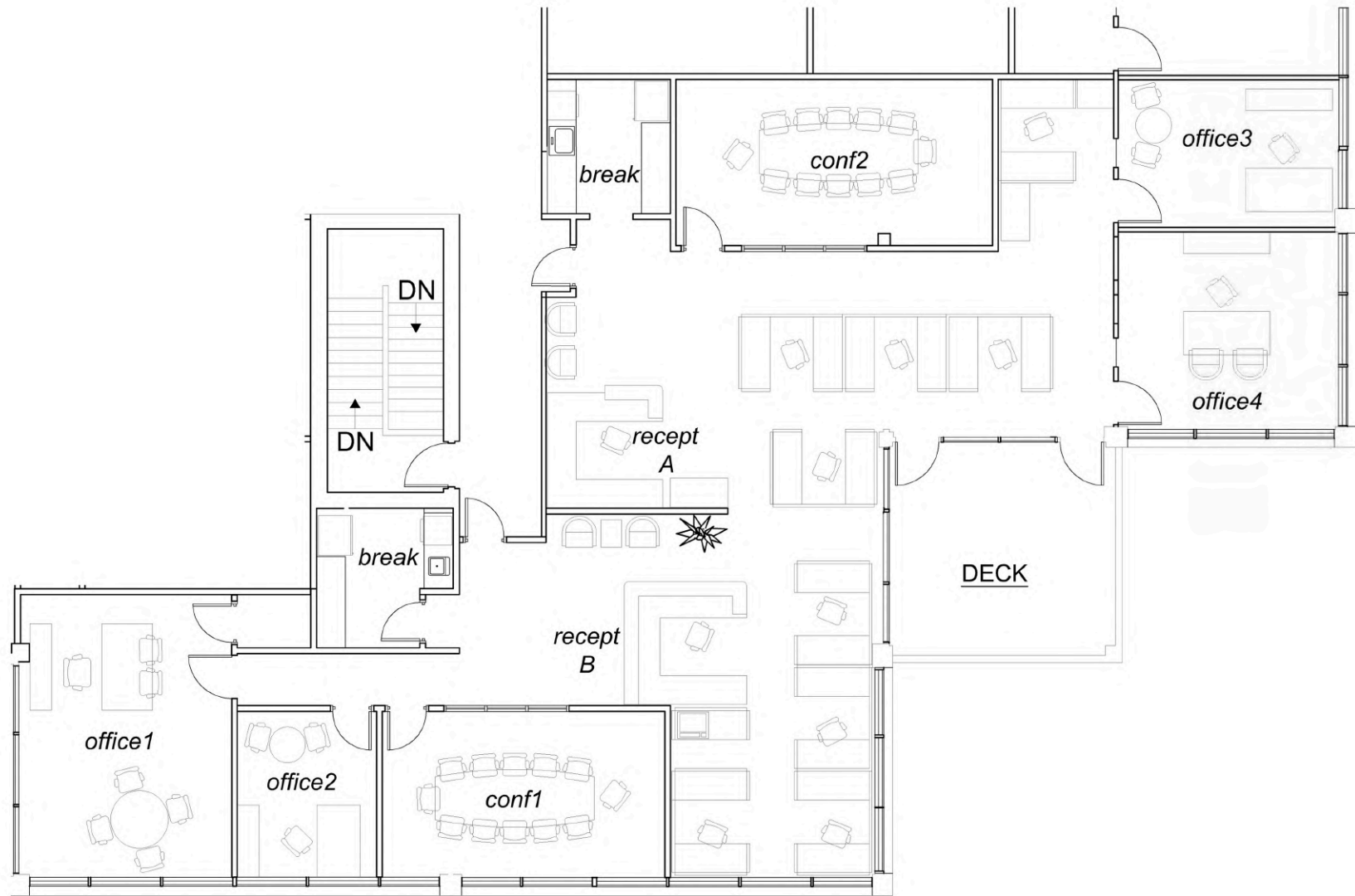
RIDGEWOOD CENTER



SUITE 210

3,590 SF TOTAL | CONCEPTUAL PLAN

RIDGEWOOD CENTER



SUITE 210

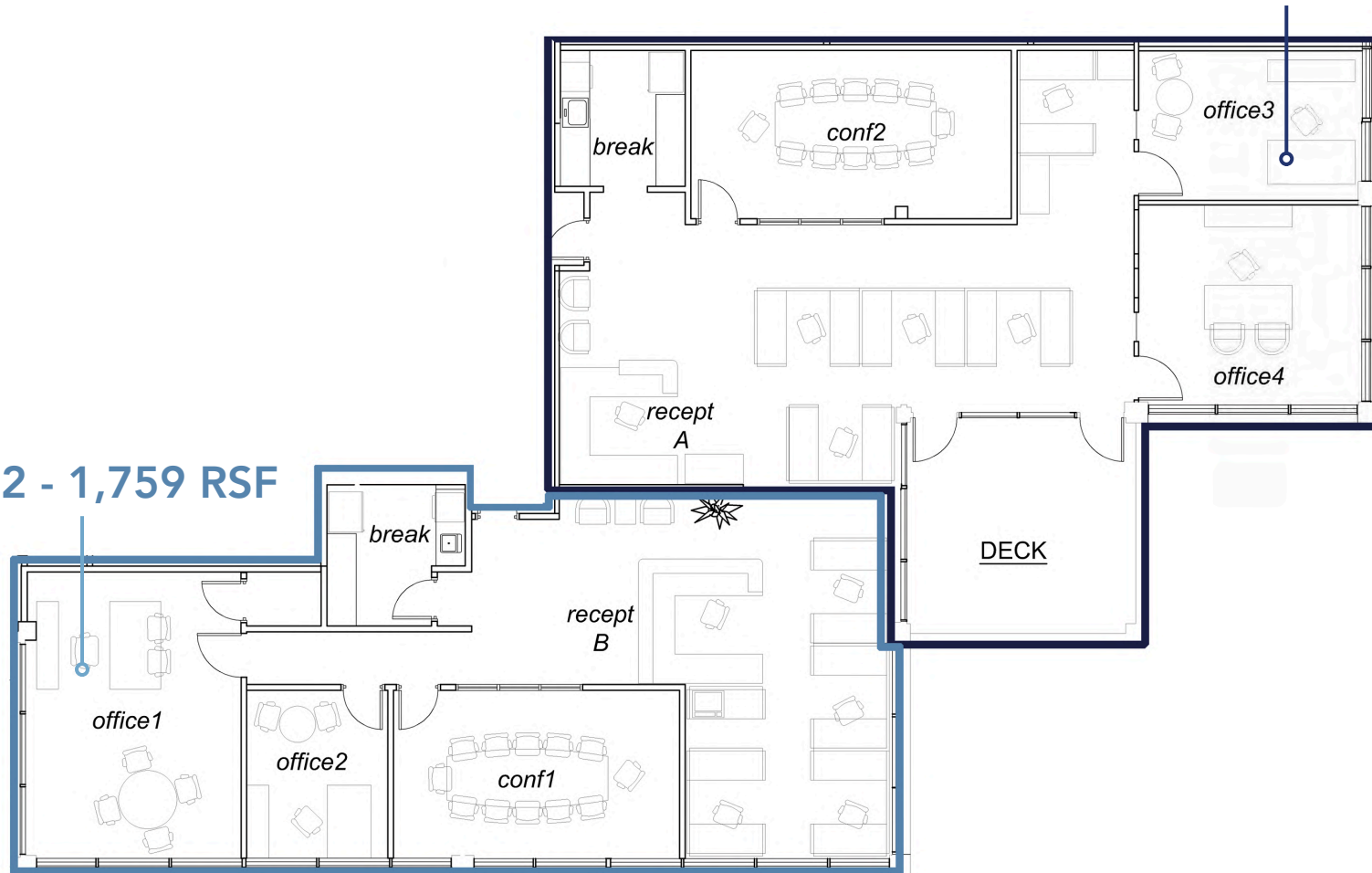
1,759 RSF & 1,824 RSF | CONCEPTUAL PLAN

Landlord Can Build Out the Space Per Tenant's Specifications

RIDGEWOOD CENTER

OPTION 1 - 1,824 RSF

OPTION 2 - 1,759 RSF



PROPERTY PHOTOS



RIDGEWOOD CENTER

33650

Natural Health Center

Travelers

Michelle B. Nelson, CPA

O'Bunco Engineering

Farmers Insurance

OCD Anxiety Centers

Wellspring Physical Therapy