



Welcome to Meteora – Elevate Your Business in Northern Manhattan’s Premier Commercial Space!

In Washington Heights, where high elevations and solid bedrock form the foundation of the city, Meteora lives up to its name, offering stability and strength for your business. Ideally situated at 170th Street and St. Nicholas Avenue, this new space provides unmatched access to New York City’s renowned medical and academic institutions. With impressive 14-foot ceilings and double-wide columns designed for ultimate layout flexibility, Meteora is a fully built, open-plan space ready to support your vision.

New Construction

Meteora 563 West 170th Street
FOR LEASE: Commercial Space
4,108sf - 6,625sf

NaviTimes
Northern Manhattan Commercial Real Estate
(212) 928-5050
www.navitimes.com

INTERIOR



Meteora 563 West 170th Street
Commercial Space FOR LEASE
4,108sf - 6,625sf

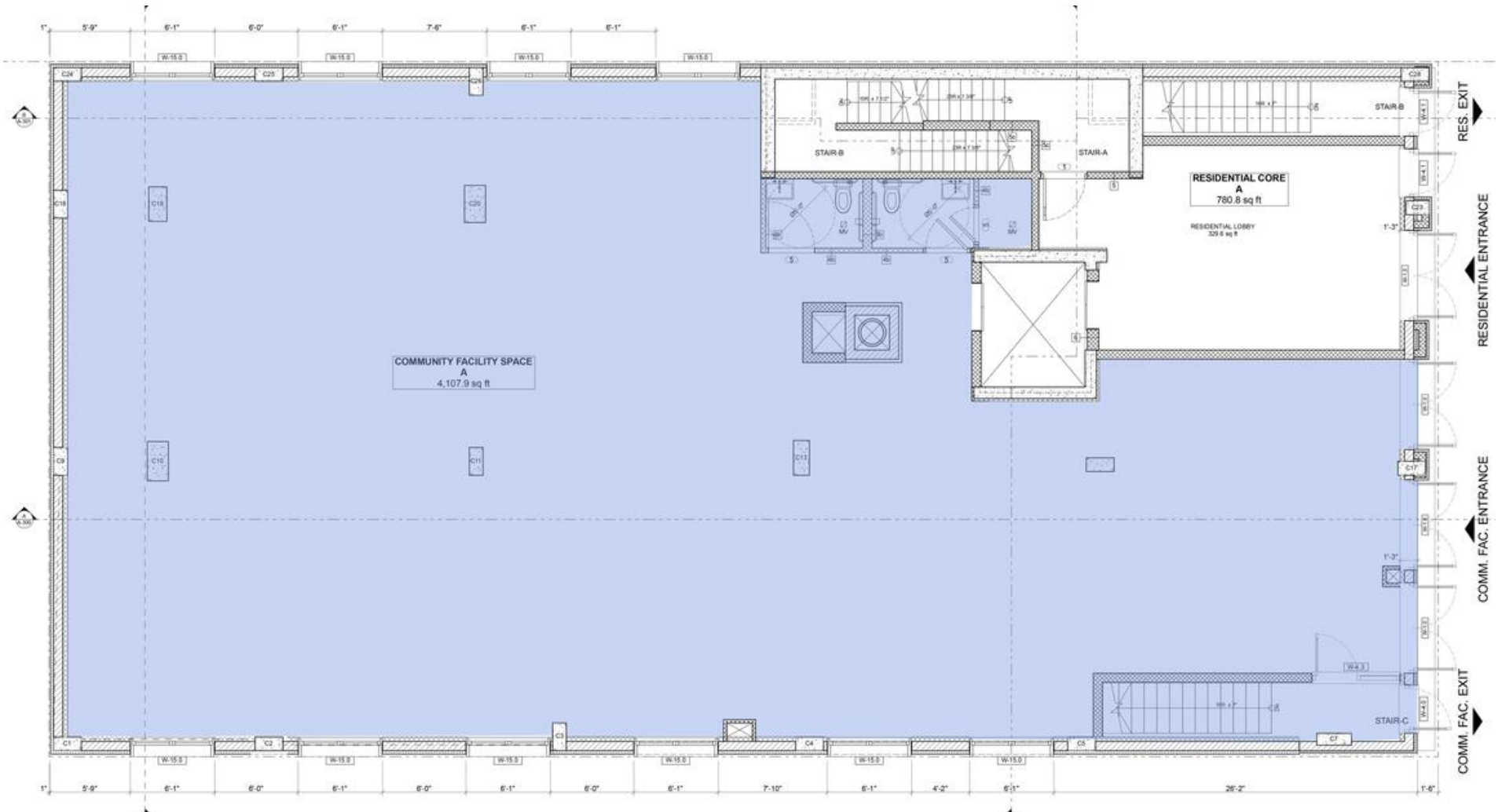
NaviTimes

Northern Manhattan Commercial Real Estate

(212) 928-5050

www.navitimes.com

PLANS



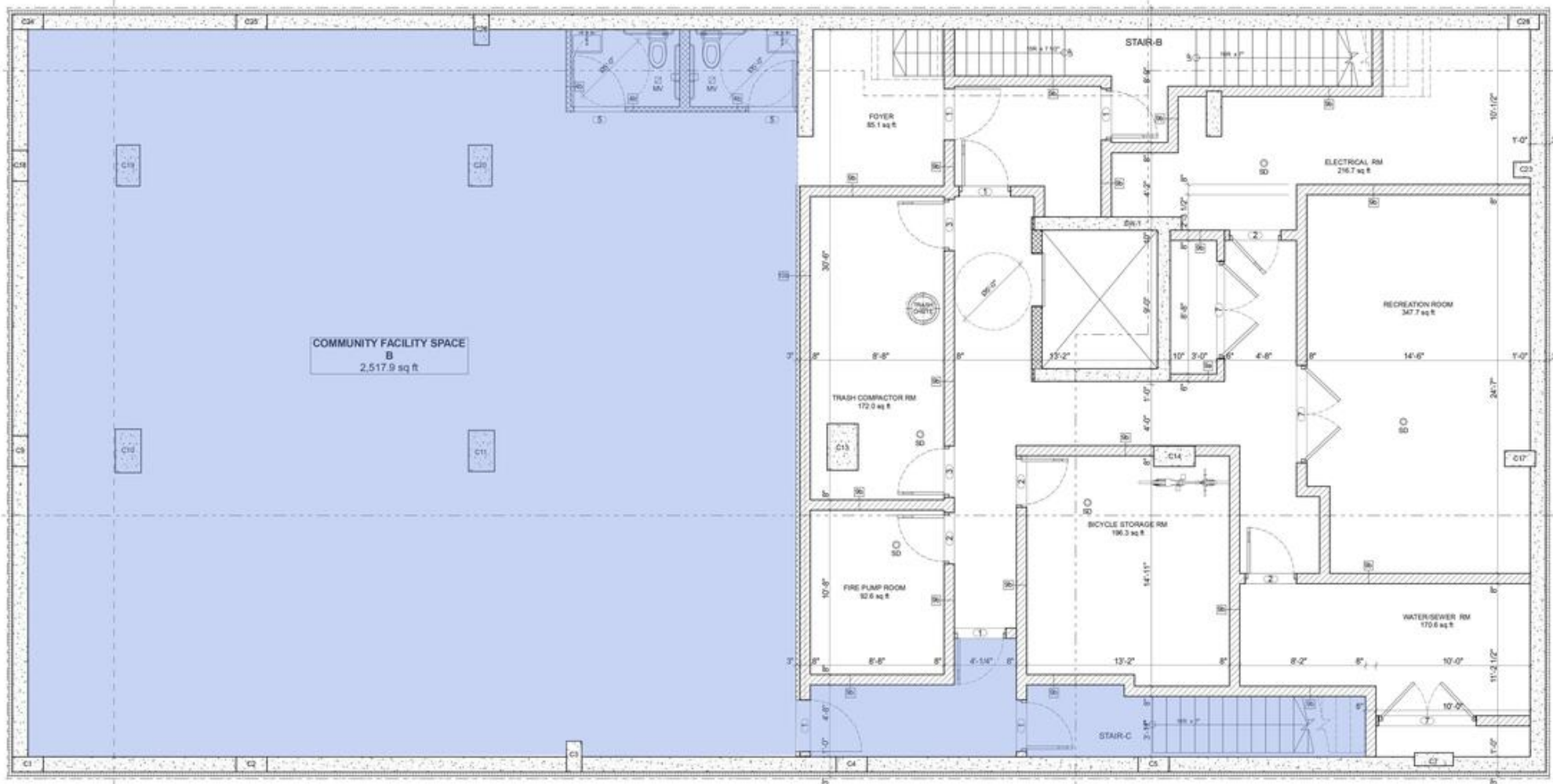
Meteora 563 West 170th Street
Commercial Space FOR LEASE
4,108sf - 6,625sf

NaviTimes

Northern Manhattan Commercial Real Estate

(212) 928-5050

www.navitimes.com



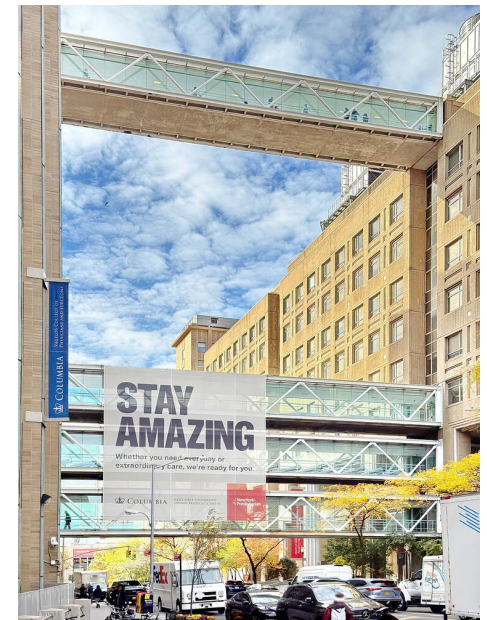
Meteora 563 West 170th Street
Commercial Space FOR LEASE
 4,108sf - 6,625sf

NaviTimes

Northern Manhattan Commercial Real Estate

(212) 928-5050

www.navitimes.com



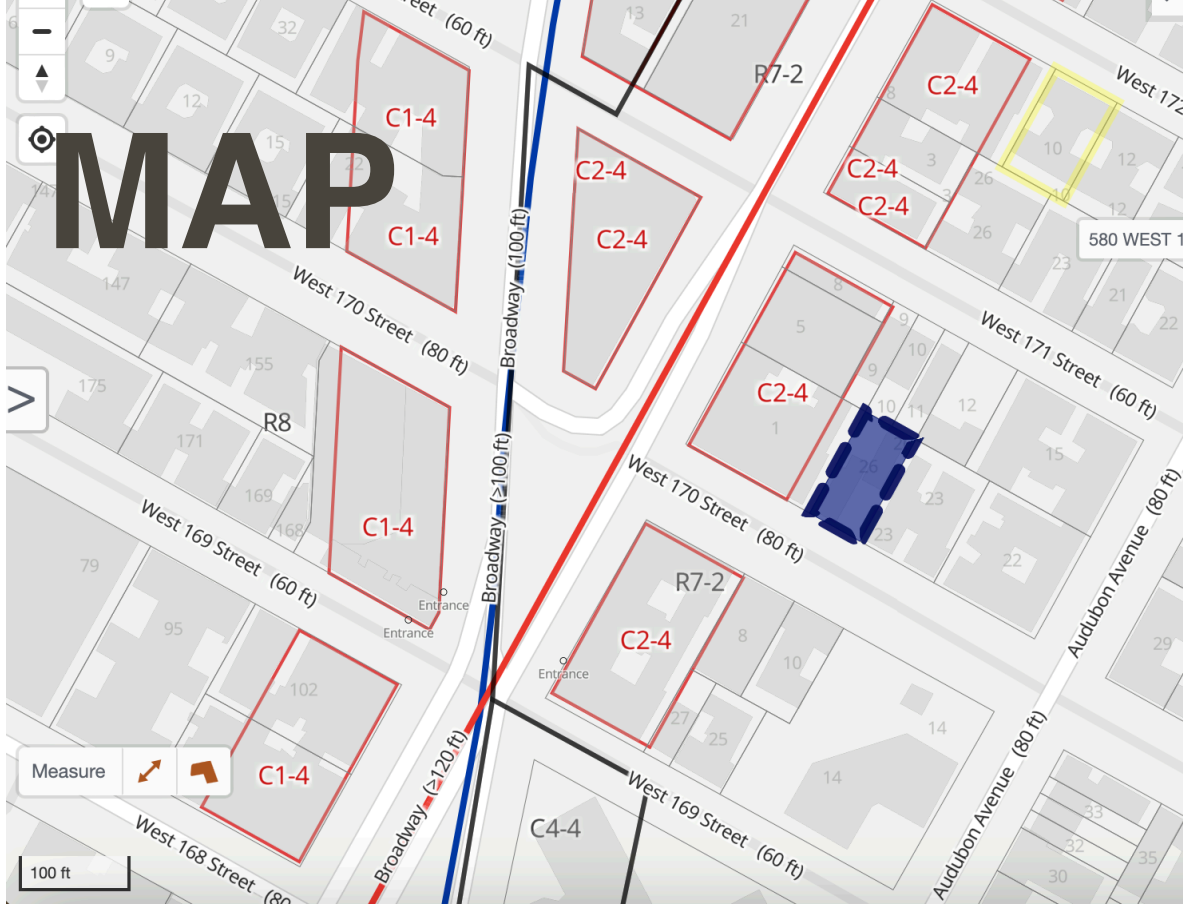
Meteora 563 West 170th Street
Commercial Space FOR LEASE
4,108sf - 6,625sf

NaviTimes

Northern Manhattan Commercial Real Estate

(212) 928-5050

www.navitimes.com



TAX LOT | BBL 1021270026

563 WEST 170TH STREET, 10032

Manhattan (Borough 1) | Block 2127 | Lot 26



Zoning District: R7-2

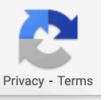
INTERSECTING MAP LAYERS ⓘ:

- [Transit Zone](#)
- [FRESH Zone](#)

ZONING DETAILS:

- [Digital Tax Map](#)
- [Zoning Map: 3b \(PDF\)](#)
- [Historical Zoning Maps \(PDF\)](#)

Owner	Show Owner
Land Use	Mixed Residential & Commercial Buildings
Lot Area	5,000 sq ft
Lot Frontage	50 ft
Lot Depth	100 ft
Year Built	2023
Building Class	Elevator Apartments - Fireproof With Stores (D6)
Number of Buildings	1
Gross Floor Area	28,941 sq ft
Total # of Units	27



Meteora 563 West 170th Street
Commercial Space FOR LEASE
 4,108sf - 6,625sf

NaviTimes

Northern Manhattan Commercial Real Estate

(212) 928-5050

www.navitimes.com



