



FOR SALE OR LEASE | **8.35 ACRES**
4041-4051 N 27TH ST | **MILWAUKEE, WI**

PATRICK DEDERING | **DIRECTOR, ACQUISITION & LEASING** | 414-376-6933 | PATRICK@PHOENIXINVESTORS.COM



PHOENIX
INVESTORS

Opportunity. Execution. Value Creation.

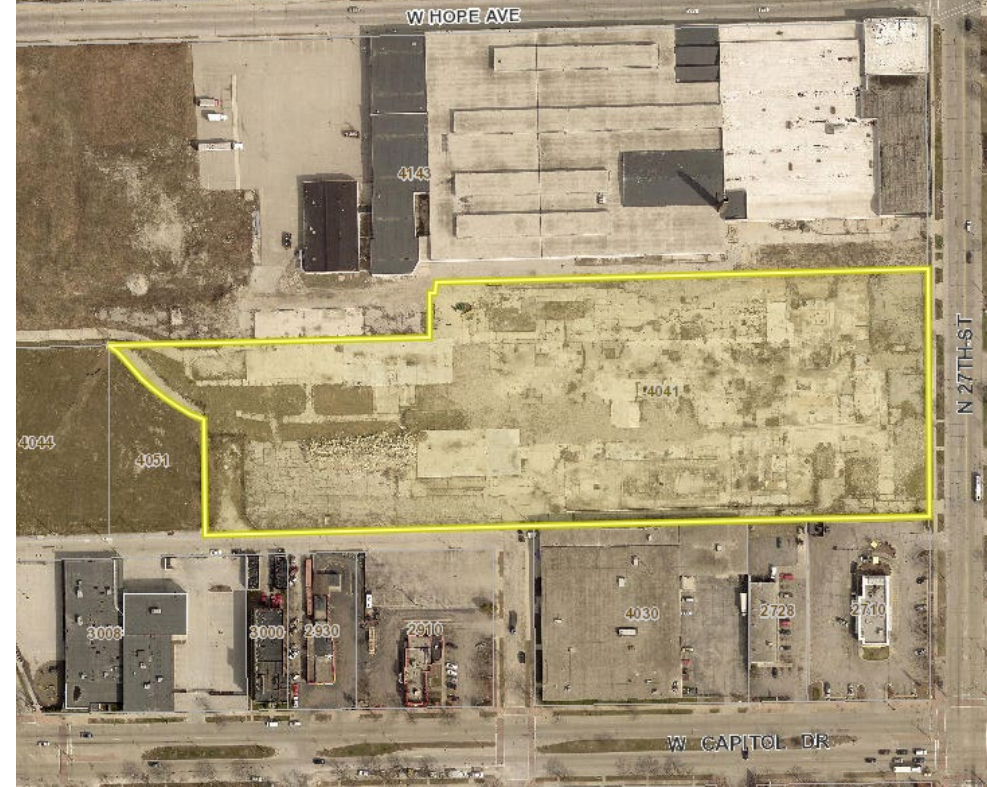
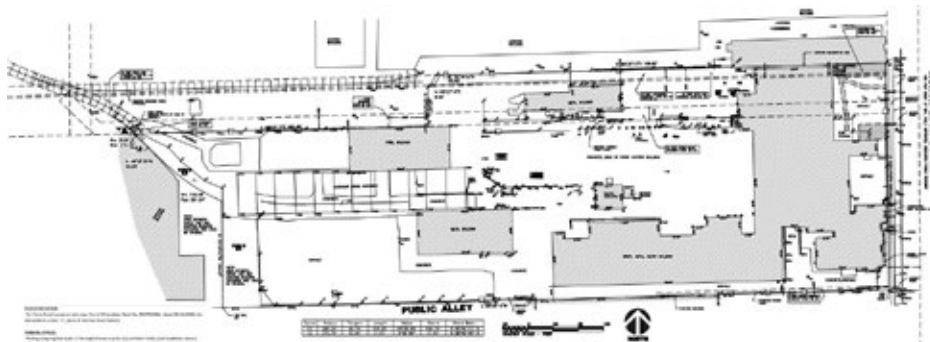
This document has been prepared by Phoenix Investors for advertising and general information only. Phoenix Investors makes no guarantees, representations, or warranties of any kind, expressed or implied, regarding the information including, but not limited to, warranties of content, accuracy, and reliability.

PROPERTY DETAILS

4041-4051 N 27TH ST | MILWAUKEE, WI

LAND AREA	8.35 Acres
TOPOGRAPHY	Level
ZONING	I-H: Industrial Heavy
LOT TYPE	Previously Developed Lot
INFRASTRUCTURE	Curb Gutter Sidewalk Electricity Gas Sewer Water
PROPOSED USE	Industrial/Commercial
FRONTAGE	382' on N 27th St (with Curb Cuts)
PARCEL ID	246-995-112
OPPORTUNITY ZONE	Yes
TRAFFIC	N 27th St West Capitol Dr S: 9,300 CPD W Capitol Dr N 29th St E: 36,100 CPD N 27th St W Roosevelt Dr N: 12,100 CPD W Hope Ave N 24th St E: 1,500 CPD W Capitol Dr N 24th Pl W: 31,900 CPD
PROPERTY TAX 2021	\$7,324.86

SITE MAP



LOCATION MAP

4041-4051 N 27TH ST | MILWAUKEE, WI

I-41	2 MILES
I-43	2 MILES
MITCHELL INT'L AIRPORT	14 MILES
MADISON	80 MILES
CHICAGO	96 MILES

