

# Photos



## Contact Us

**Leslie Kirkpatrick, MBA**  
Senior Associate  
+1 918 557 2231  
leslie.kirkpatrick@cbre.com

**Carrie Claiborne**  
Senior Associate  
+1 918 906 0224  
carrie.claiborne@cbre.com

© 2024 CBRE, Inc. All rights reserved. This information has been obtained from sources believed reliable, but has not been verified for accuracy or completeness. You should conduct a careful, independent investigation of the property and verify all information. Any reliance on this information is solely at your own risk. CBRE and the CBRE logo are service marks of CBRE, Inc. All other marks displayed on this document are the property of their respective owners, and the use of such logos does not imply any affiliation with or endorsement of CBRE. Photos herein are the property of their respective owners. Use of these images without the express written consent of the owner is prohibited.



Office | For Sale

CBRE

# Eton Office Centre

8321 East 61st Street  
Tulsa, OK 74133





# Property Highlights

+65,629 Gross Square Foot Two-Story Office, Medical, and Retail Building

+10.103 Acres

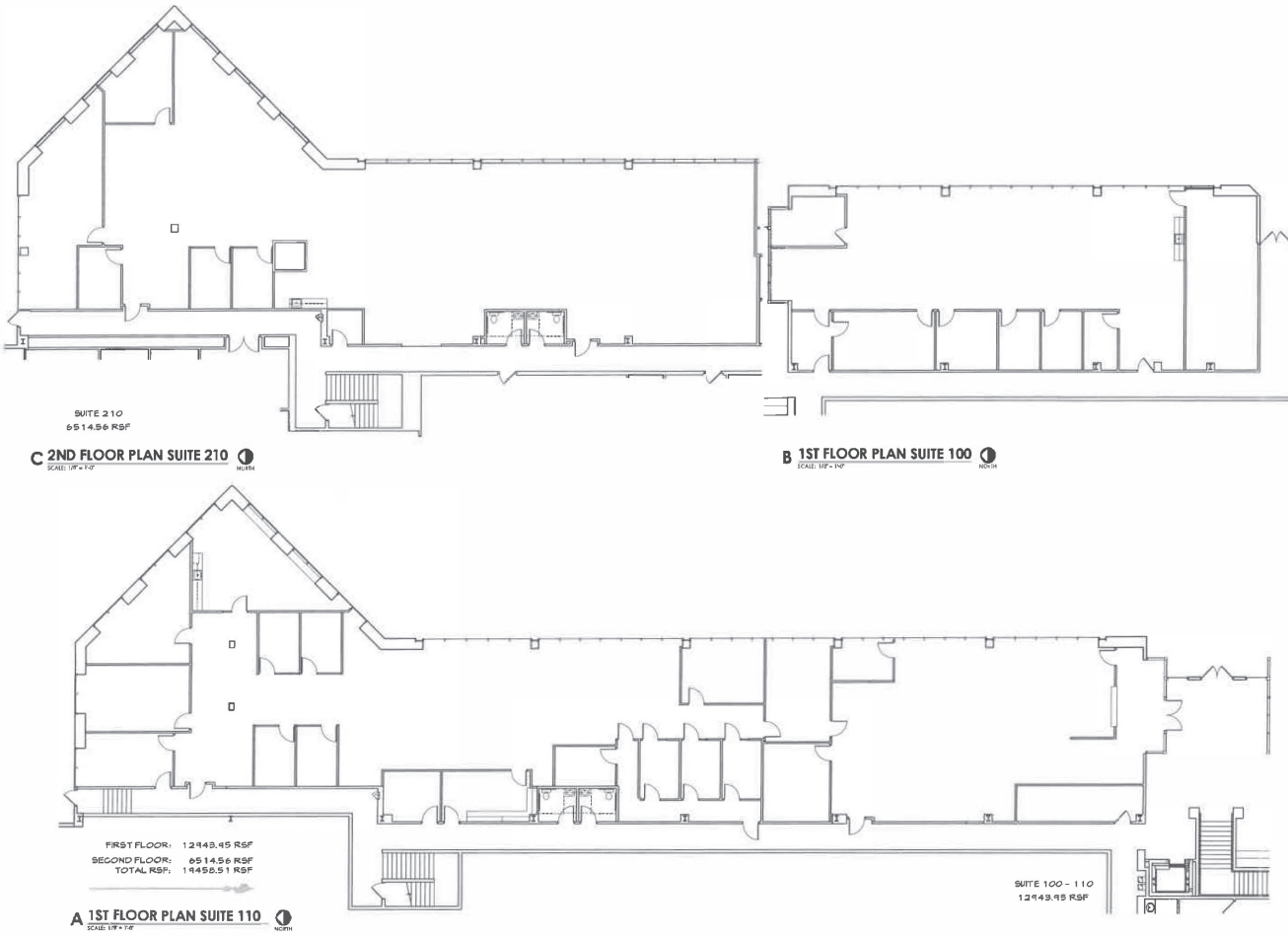
+Owner-Occupant Opportunity with up to 19,457± RSF of Move-In Ready Condition Office Space

+Great Walkability to Nearby Shopping & Restaurants

+Ample Parking Available (296 parking spaces, 4.5/1000)



# Move-In Ready | Suites 100, 110, 210



**KKT ARCHITECTS, INC.**  
200 SOUTH URICA PLACE, SUITE 200  
TULSA, OKLAHOMA 74114  
(918) 442-5100, (918) 442-5101  
WWW.KKTARCHITECTS.COM

**SUITES  
100, 110  
& 210**

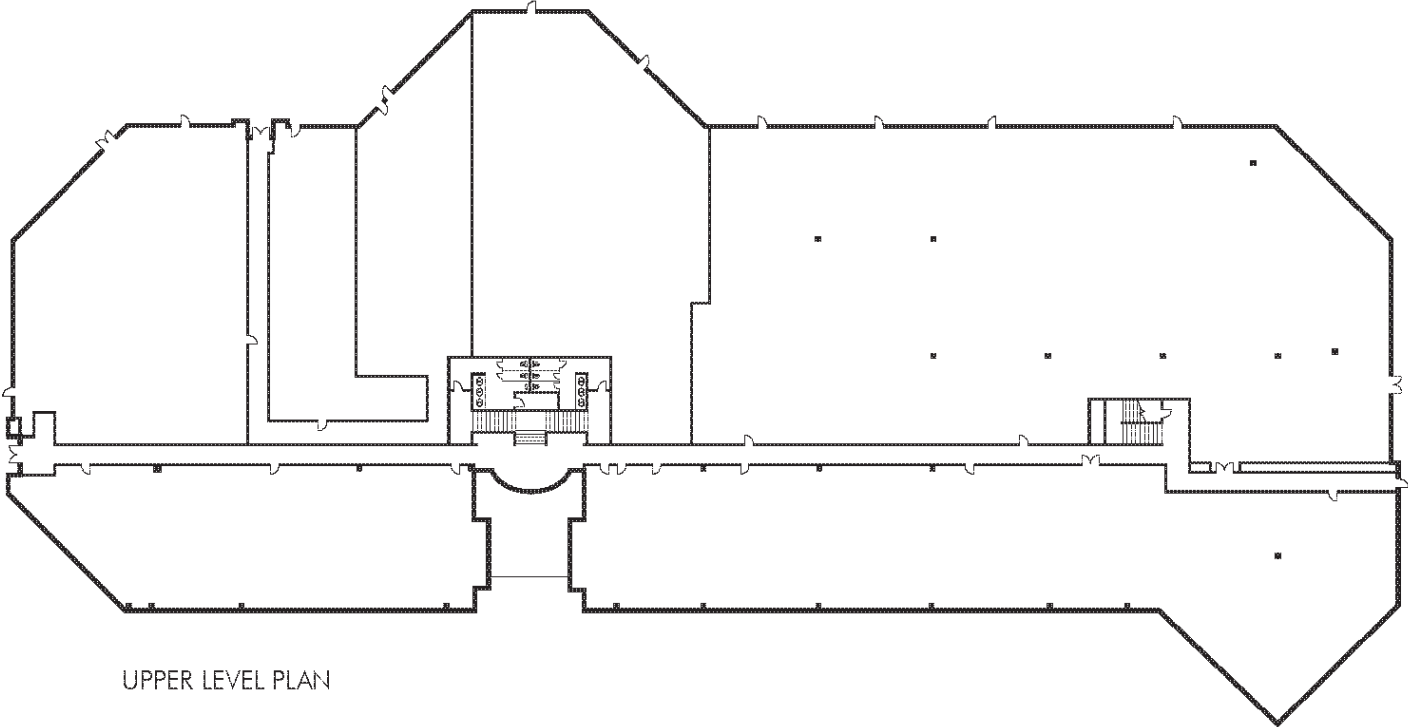
ETON SQUARE  
BUILDING "B"  
8321 S. 61ST

**CBRE**

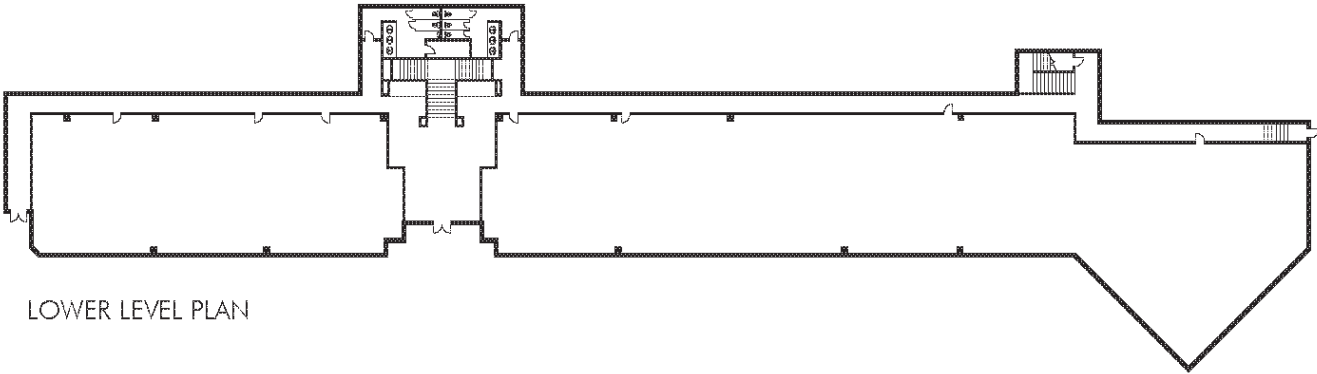
07/18/14

AS-BUILT  
PLAN  
**AS.1**

# Floor Plate



UPPER LEVEL PLAN



LOWER LEVEL PLAN



# Property Highlights





# Location



+ Easily accessible from Highway 169 and I-44

+ Population of 236,874 within a 5-mile radius

+ 10 minute drive to Downtown Tulsa

+ 34,800 vpd on East 61st Street

+ 32,400 vpd on South Memorial Drive

+ 10 minute drive to Tulsa International Airport



# Site Map

