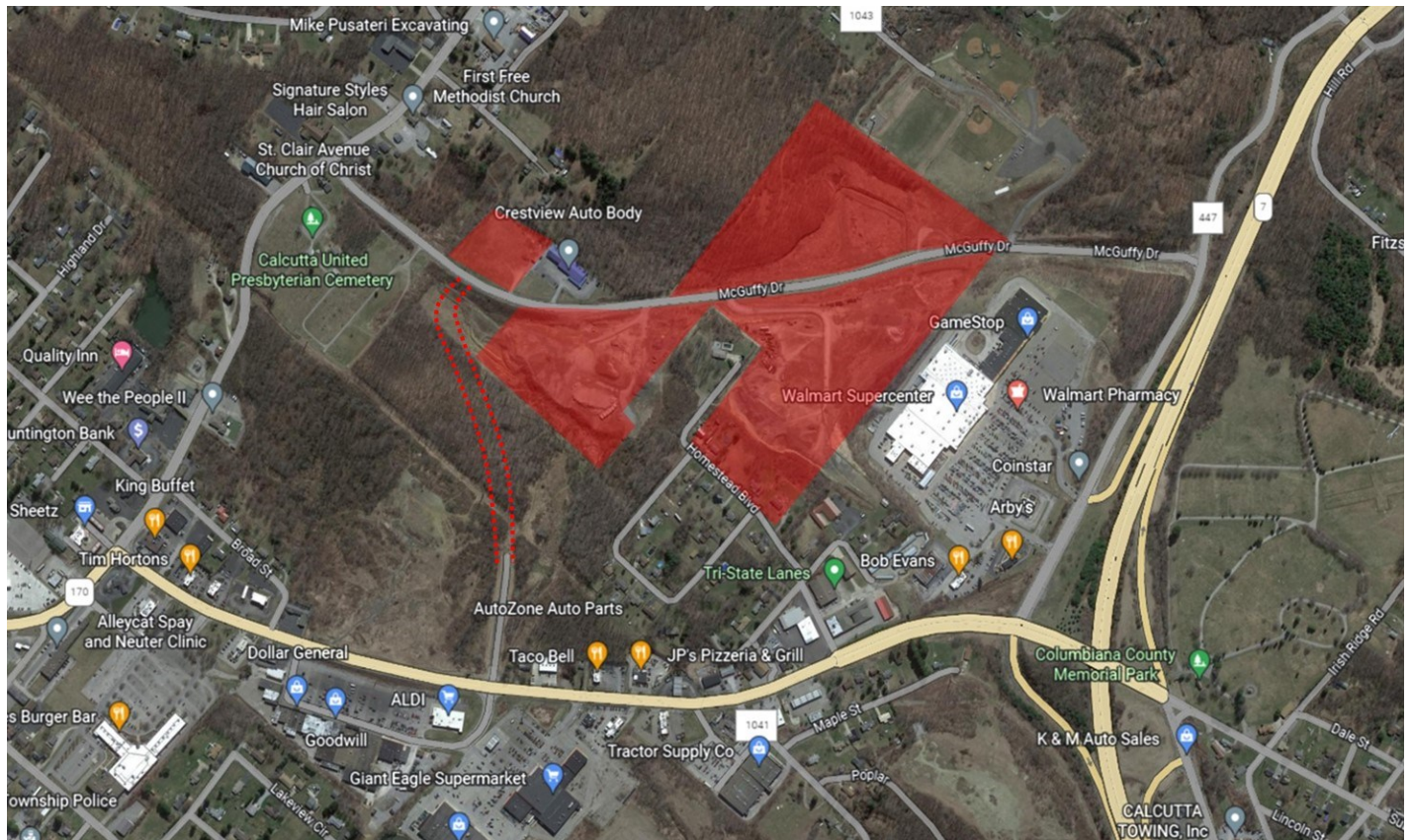


# MAJOR COMMERCIAL DEVELOPMENT OPPORTUNITY

MCGUFFEY DRIVE, CALCUTTA, OH 43920



This 53.14-acre parcel is located in Calcutta, Ohio (St. Clair Township), which borders both Pennsylvania and West Virginia. The site is located in the heart of Calcutta's Business District. In close proximity to the Shell Cracker Plant in Monaca, PA, Pittsburgh International Airport, and US Route 30 .

- Up to 53.14 Acres
- Multiple, Subdividable Parcels
- No Zoning in St. Clair Township
- Utilities on Site
- Connecting Road Completion: August 2023



Exclusively listed by:



Contact: Gene Galiardi or Scott Long

In cooperation with:



Contact: Zachary Underwood

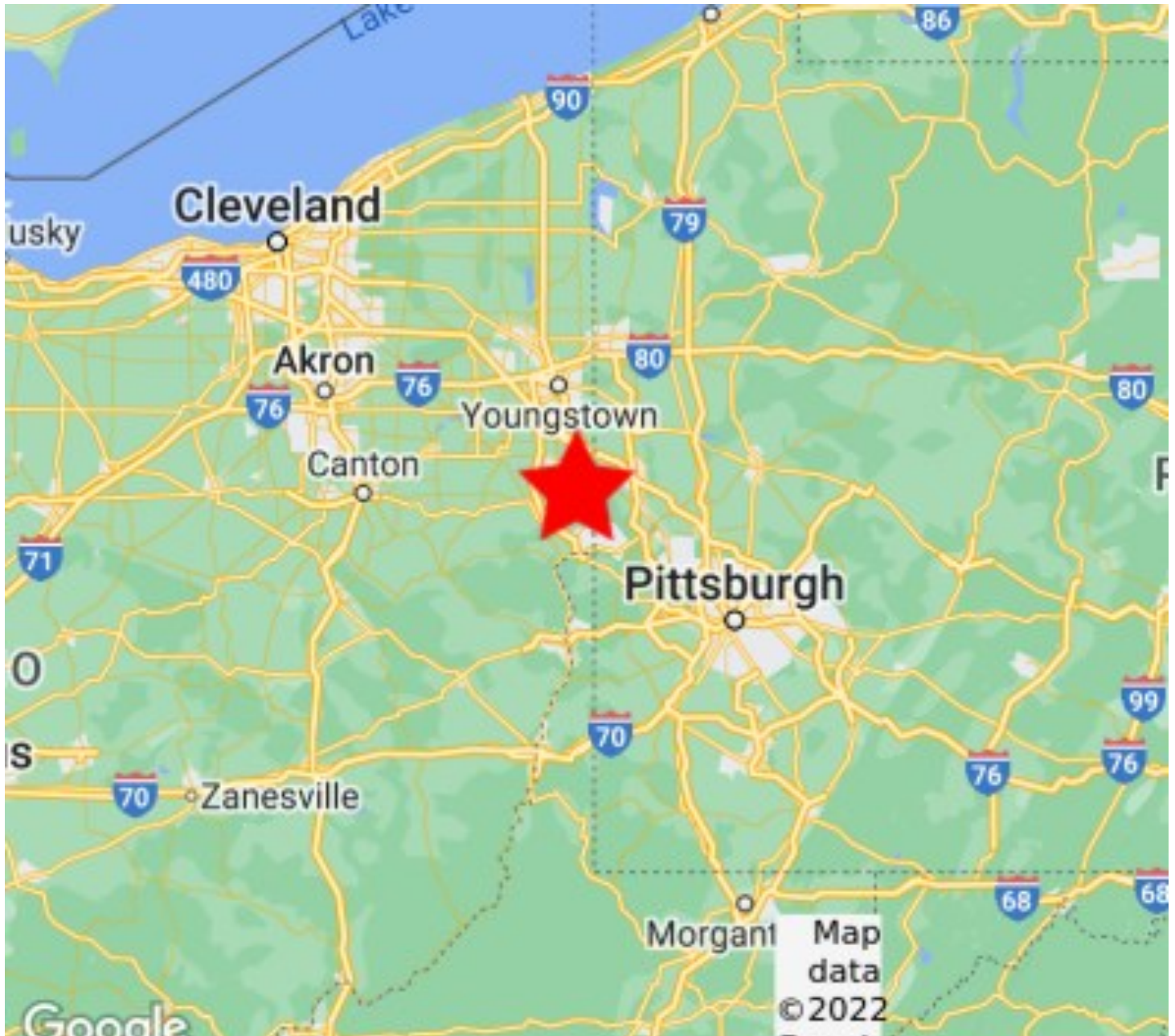
No warranty or representation express or implied, is made as to the accuracy of the information contained herein, and same is submitted subject to errors, omissions, change of price, rental or other conditions, withdrawal without notice, and to any special listing condition, imposed by our principals.



# MAJOR COMMERCIAL DEVELOPMENT OPPORTUNITY

---

McGUFFEY DRIVE, CALCUTTA, OH 43920



Exclusively listed by:



Contact: Gene Galiardi or Scott Long

In cooperation with:



Contact: Zachary Underwood

No warranty or representation express or implied, is made as to the accuracy of the information contained herein, and same is submitted subject to errors, omissions, change of price, rental or other conditions, withdrawal without notice, and to any special listing condition, imposed by our principals.

## MEET THE TEAM

### MAJOR COMMERCIAL DEVELOPMENT OPPORTUNITY

MCGUFFEY DRIVE, CALCUTTA, OH 43920



**GENE GALIARDI**

C: 412.580.0636

ggaliardi@penncom.com

**PENNSYLVANIA COMMERCIAL REAL ESTATE, INC.**

223 Fourth Ave., Suite 150

Pittsburgh, PA 15222

412.995.2232



**SCOTT LONG**

slong@penncom.com

**PENNSYLVANIA COMMERCIAL REAL ESTATE, INC.**

223 Fourth Ave., Suite 150

Pittsburgh, PA 15222

412.995.2230



**ZACHARY UNDERWOOD**

underwood@betterhomesusa.net

**UNDERWOOD & ASSOCIATES**

15902 Saint Clair Avenue

East Liverpool, OH 43920

330.932.0665

OH #brkp.2014000258

Exclusively listed by:



**PENNSYLVANIA  
COMMERCIAL  
REAL ESTATE INC.**

Contact: Gene Galiardi or Scott Long

In cooperation with:



Contact: Zachary Underwood

No warranty or representation express or implied, is made as to the accuracy of the information contained herein, and same is submitted subject to errors, omissions, change of price, rental or other conditions, withdrawal without notice, and to any special listing condition, imposed by our principals.