

VENETIAN BAY COMMERCIAL CONDO FOR SALE



PROPERTY DESCRIPTION

Commercial Condo For Sale with storefront on busy Luna Bella Lane.

Rare opportunity to purchase a condo unit with direct exposure to Luna Bella Lane.

Unit B (Suite 133) is 2,989 SF total.

2,250 SF is vacant and available for owner to occupy or lease.

739 SF is leased by Snap Fitness through April 2033. \$16,785.35 Current Annual Base Rent, 4% annual increases, PLUS Tenant pays condo dues and real estate taxes.

Location has some of the best demographics in East Volusia County.

The Downtown Venetian Bay Town Center has approximately 2,000 homes within a short walking distance and over 2,900 homes currently, with plans to grow to over 4,000 homes at full build-out. Additionally, there are 322 apartments now open across the street.

Currently estimated to be over 7,000 potential customers with over \$75,000 plus Average Household Income.

No hassle investment with Condo Association handling all building and grounds maintenance.

Building signage available.

Cash-in on local growth today!

JOHN W. TROST, CCIM

Principal | Senior Advisor

O: 386.301.4581 | C: 386.295.5723

john.trost@svn.com

CHRIS BUTERA

Principal

O: 386.453.4789

chris.butera@svn.com

OFFERING SUMMARY

SALE PRICE: \$650,000

SIZE: 2,989 SF TOTAL
(2,250 SF Vacant)
(739 SF Leased)

NOI: From 739 SF Leased
\$16,785.35
(\$22.71 NNN)

YEAR BUILT: 2007

ZONING: PUD

PARCEL NO: 7307-04-00-0020

LOCATION ADDRESS

424 Luna Bella Lane, Unit B (Suite 133)

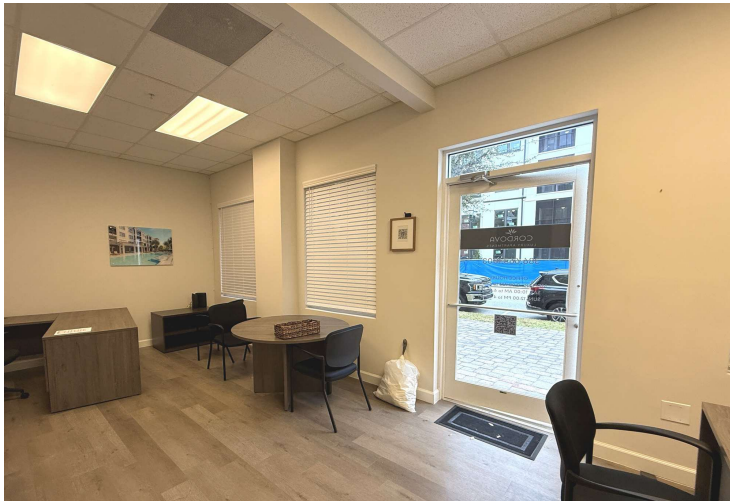
New Smyrna Beach, FL 32168

VENETIAN BAY COMMERCIAL CONDO | 424 Luna Bella Lane, Unit B (Suite 133) New Smyrna Beach, FL 32168

We obtained the information above from sources we believe to be reliable. However, we have not verified its accuracy and make no guarantee, warranty or representation about it. It is submitted subject to the possibility of errors, omissions, change of price, rental or other conditions, prior sale, lease or financing, or withdrawal without notice. We include projections, opinions, assumptions or estimates for example only, and they may not represent current or future performance of the property. You and your tax and legal advisors should conduct your own investigation of the property and transaction. All SVN offices are independently owned and operated.



ADDITIONAL PHOTOS



JOHN W. TROST, CCIM
Principal | Senior Advisor
O: 386.301.4581 | C: 386.295.5723
john.trost@svn.com

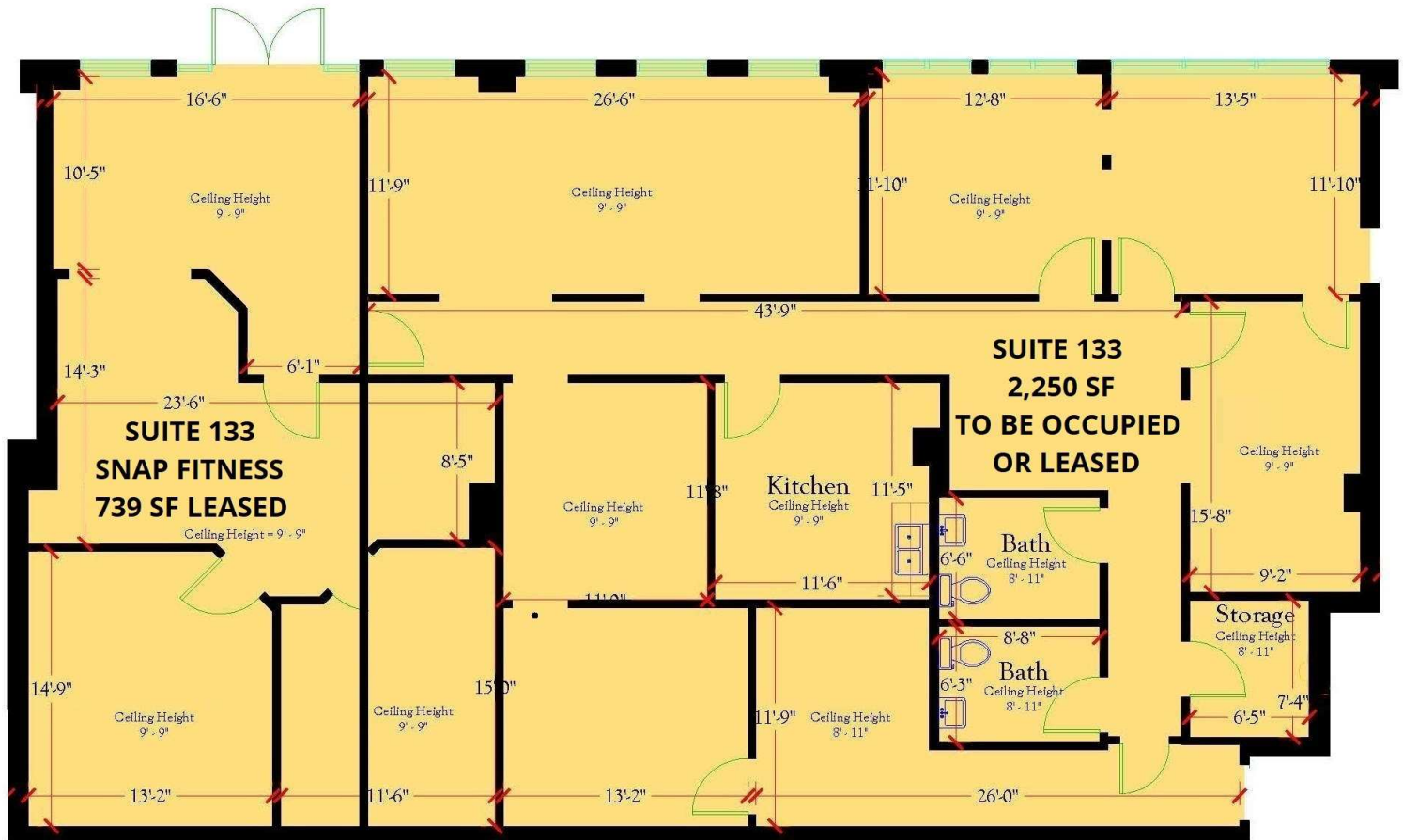
CHRIS BUTERA
Principal
O: 386.453.4789
chris.butera@svn.com

VENETIAN BAY COMMERCIAL CONDO | 424 Luna Bella Lane, Unit B (Suite 133) New Smyrna Beach, FL 32168

We obtained the information above from sources we believe to be reliable. However, we have not verified its accuracy and make no guarantee, warranty or representation about it. It is submitted subject to the possibility of errors, omissions, change of price, rental or other conditions, prior sale, lease or financing, or withdrawal without notice. We include projections, opinions, assumptions or estimates for example only, and they may not represent current or future performance of the property. You and your tax and legal advisors should conduct your own investigation of the property and transaction. All SVN offices are independently owned and operated.



UNIT B (133) FLOOR PLAN - 2,250 SF VACANT



JOHN W. TROST, CCIM

Principal | Senior Advisor

O: 386.301.4581 | C: 386.295.5723

john.trost@svn.com

CHRIS BUTERA

Principal

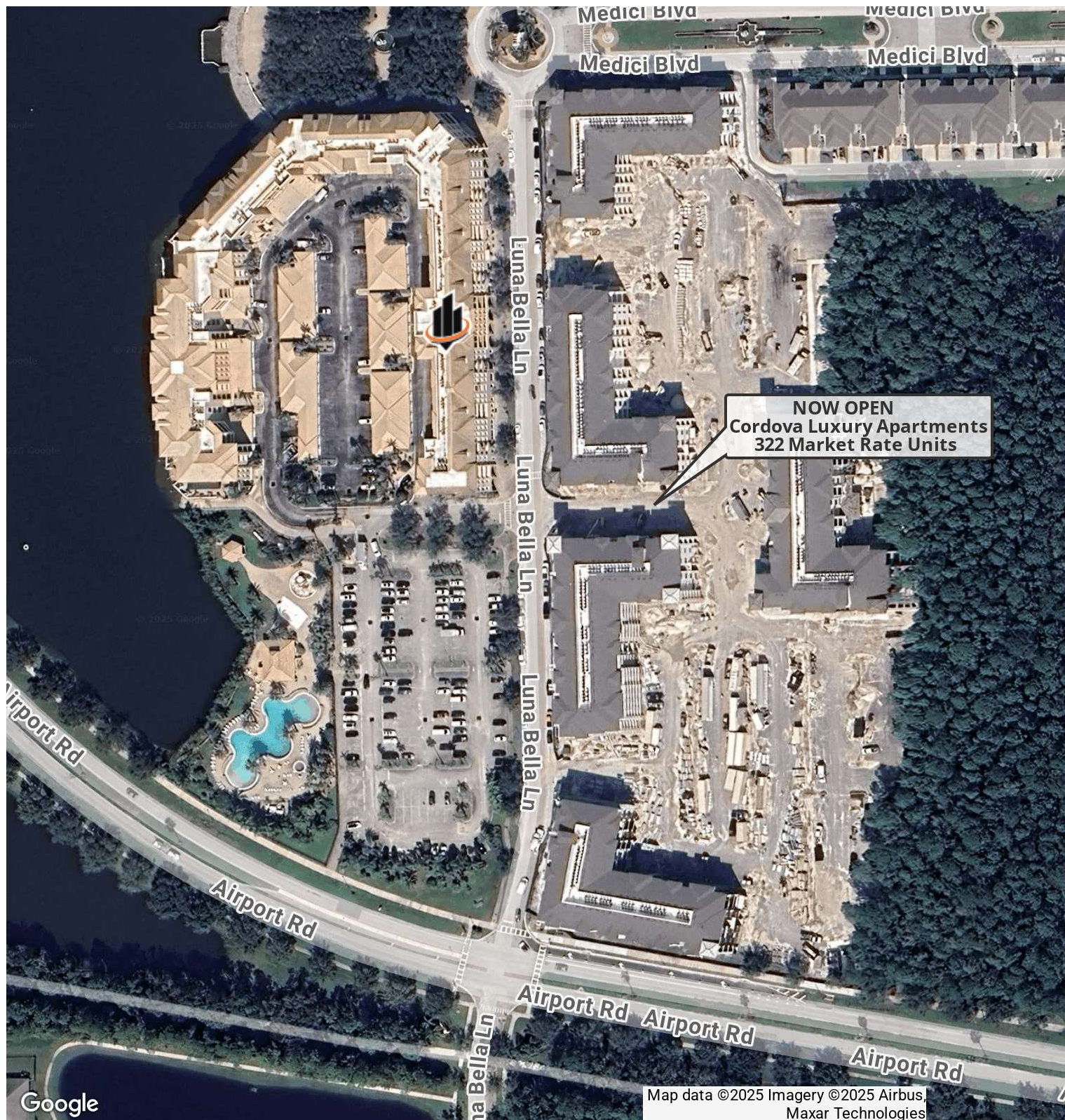
O: 386.453.4789

chris.butera@svn.com

VENETIAN BAY COMMERCIAL CONDO | 424 Luna Bella Lane, Unit B (Suite 133) New Smyrna Beach, FL 32168

We obtained the information above from sources we believe to be reliable. However, we have not verified its accuracy and make no guarantee, warranty or representation about it. It is submitted subject to the possibility of errors, omissions, change of price, rental or other conditions, prior sale, lease or financing, or withdrawal without notice. We include projections, opinions, assumptions or estimates for example only, and they may not represent current or future performance of the property. You and your tax and legal advisors should conduct your own investigation of the property and transaction. All SVN offices are independently owned and operated.





JOHN W. TROST, CCIM
Principal | Senior Advisor
O: 386.301.4581 | C: 386.295.5723
john.trost@svn.com

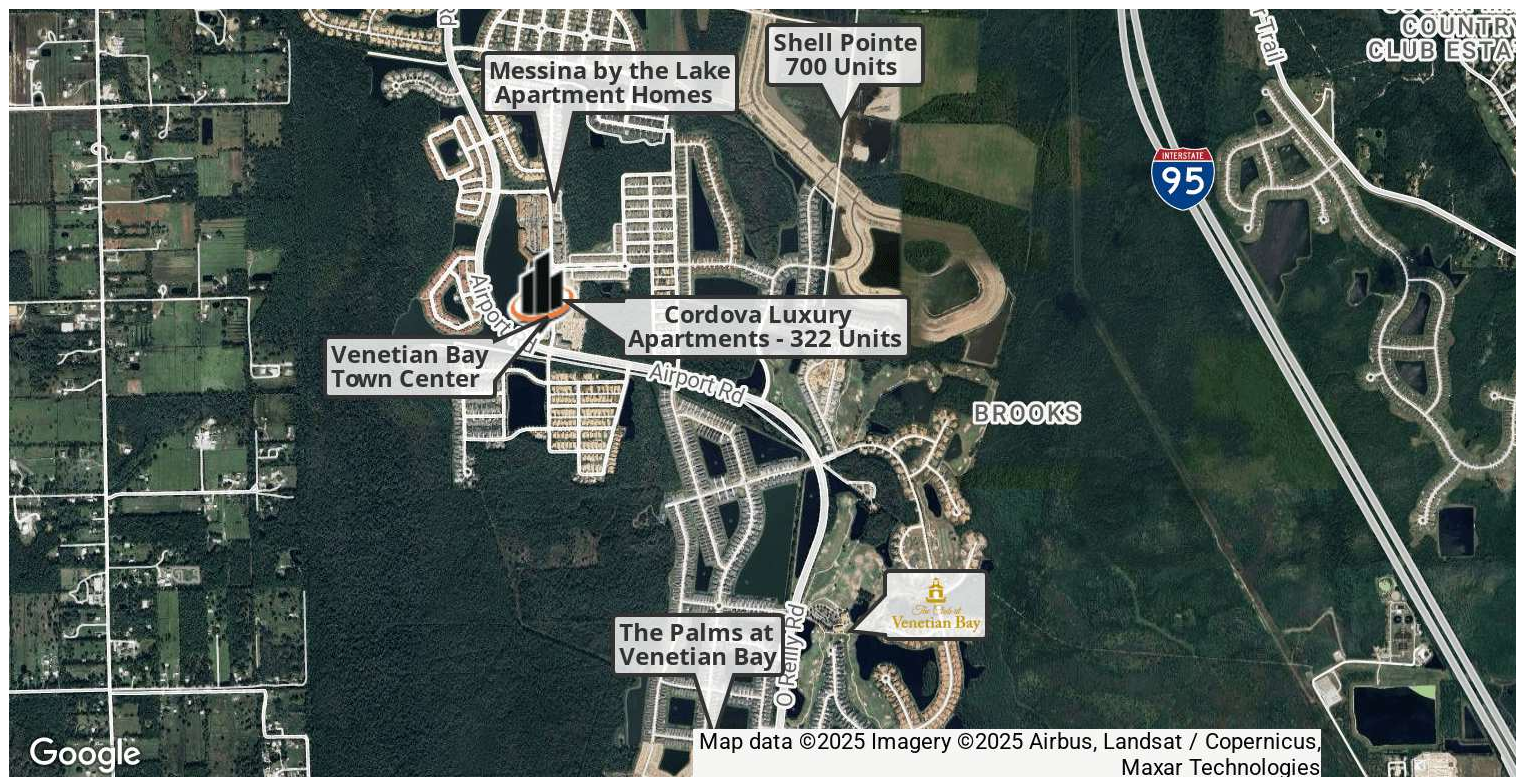
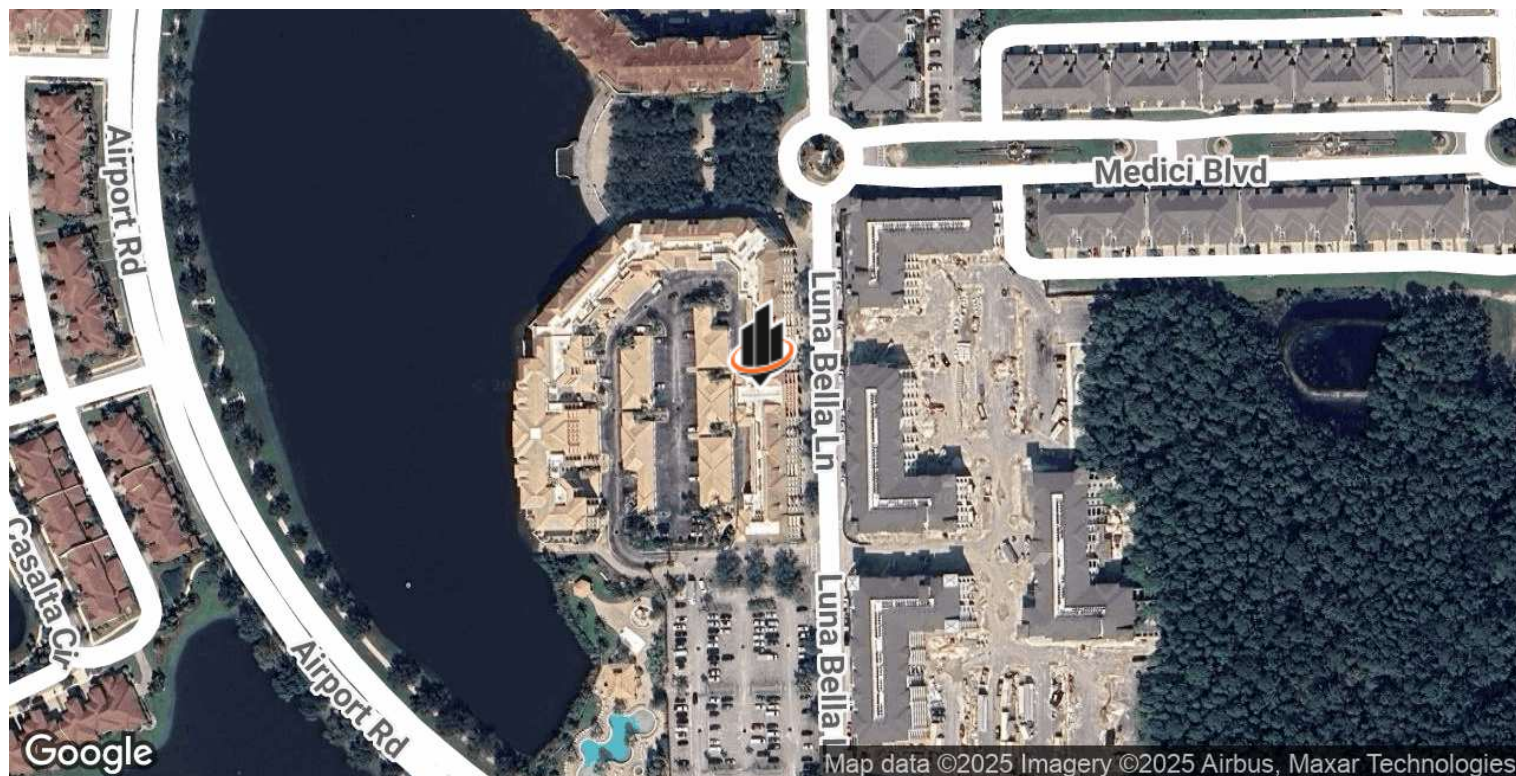
CHRIS BUTERA
Principal
O: 386.453.4789
chris.butera@svn.com

VENETIAN BAY COMMERCIAL CONDO | 424 Luna Bella Lane, Unit B (Suite 133) New Smyrna Beach, FL 32168

We obtained the information above from sources we believe to be reliable. However, we have not verified its accuracy and make no guarantee, warranty or representation about it. It is submitted subject to the possibility of errors, omissions, change of price, rental or other conditions, prior sale, lease or financing, or withdrawal without notice. We include projections, opinions, assumptions or estimates for example only, and they may not represent current or future performance of the property. You and your tax and legal advisors should conduct your own investigation of the property and transaction. All SVN offices are independently owned and operated.



LOCATION MAPS



JOHN W. TROST, CCIM

Principal | Senior Advisor

O: 386.301.4581 | C: 386.295.5723

john.trost@svn.com

CHRIS BUTERA

Principal

O: 386.453.4789

chris.butera@svn.com

VENETIAN BAY COMMERCIAL CONDO | 424 Luna Bella Lane, Unit B (Suite 133) New Smyrna Beach, FL 32168

We obtained the information above from sources we believe to be reliable. However, we have not verified its accuracy and make no guarantee, warranty or representation about it. It is submitted subject to the possibility of errors, omissions, change of price, rental or other conditions, prior sale, lease or financing, or withdrawal without notice. We include projections, opinions, assumptions or estimates for example only, and they may not represent current or future performance of the property. You and your tax and legal advisors should conduct your own investigation of the property and transaction. All SVN offices are independently owned and operated.

