

TBA

THE BROKERAGE ADVISORS
COMMERCIAL REAL ESTATE

FULLY FURNISHED SPEC SUITE SUBLEASE AVAILABLE

\$40 per square feet + NNN

1900 PEARL

Suite 1750

Approximately 3,766 sq. ft.

Explore our spec suite, fully furnished sublease opportunity at 1900 Pearl — one of Dallas' newest landmarks in the Central Business District. The new development is located in the Arts District across from Klyde Warren Park. It is also just a short walk away from the Theater District and the Annette Strauss Pavilion.

Aaron Zerbst

Senior Advisor

☎ (214) 233-6417

✉ aaron@tbacre.com

Anthony Sherman

Advisor

☎ (214) 499-2055

✉ anthony@tbacre.com

Brad Beutel

Principal Broker

☎ (469) 964-2769

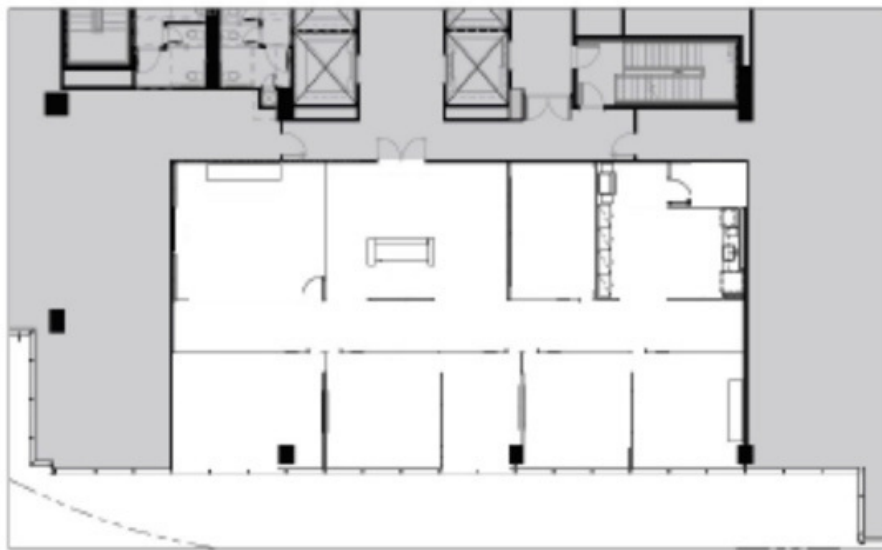
✉ bradb@tbacre.com

Timelines

FOR SUBLEASE

1900 N. Pearl St. Suite 1750
Dallas, Texas 75201

Suite 1750 – 3,766 SF



AARON ZERBST

☎ 214-233-6417

✉ aaron@tbacre.com

ANTHONY SHERMAN

☎ 214-499-2055

✉ anthony@tbacre.com

BRAD BEUTEL

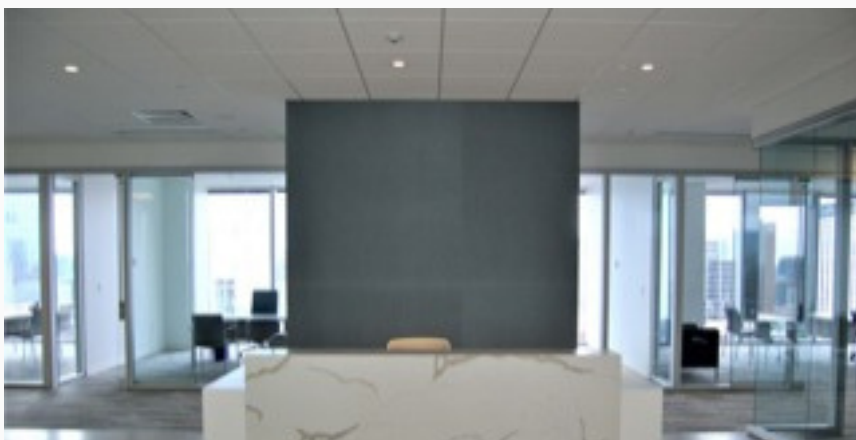
☎ 469-964-2769

✉ bradb@tbacre.com


FOR SUBLEASE

1900 N. Pearl St. Suite 1750
Dallas, Texas 75201

Suite 1750 cont.




AARON ZERBST

 214-233-6417


 aaron@tbacre.com

ANTHONY SHERMAN

 214-499-2055

 anthony@tbacre.com

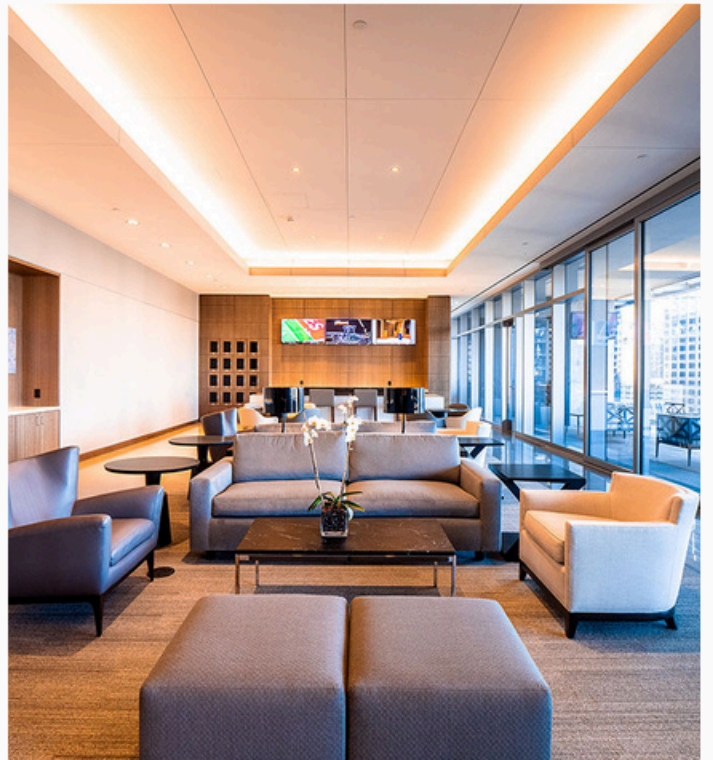
BRAD BEUTEL

 469-964-2769


 bradb@tbacre.com

FOR SUBLEASE

1900 N. Pearl St. Suite 1750
Dallas, Texas 75201




AARON ZERBST

 214-233-6417


 aaron@tbacre.com

ANTHONY SHERMAN

 214-499-2055

 anthony@tbacre.com

BRAD BEUTEL

 469-964-2769

 bradb@tbacre.com