



FOR LEASE – 36,000 SF on 9 Acres IOS – Pinellas

1401 / 1501 Lake Ave SE, Largo, FL 33771

Dock High & Grade Level Warehousing – Fenced / Paved – Outdoor Storage

Robbie Lober
Managing Member
727 999 1806

Robbie@Loberrealestate.com

Devin Beeler
Senior Associate
727 709 2179

Devin@Loberrealestate.com

LOBER
REAL ESTATE INVESTMENTS AND LEASING

Property Overview

Google Maps Link: [Click Link Here!](#)

Address: 1401 / 1501 Lake Ave SE, Largo, FL 33771

Buildings / Specs:

Building 1: 15,200 SF Warehouse
- 7 Dock High + 2 Grade Level Doors
- 20 - 22 ft Clear heights
- 3 phase power – 600amps / 480volts

Building 2: 9,176 SF – Maintenance Shop
- 8 Oversized Grade Level Doors
- 18 - 20 ft Clear heights
- 3 phase power – 600amps / 480volts

Building 3: 3,000 SF - Office

Building 4: 8,600 SF - Office

Zoning: "M-1" – Manufacturing

Availability: February 1, 2025

County / Submarket: Central Pinellas / Pinellas County

Lot Size: Approx. 9 acres

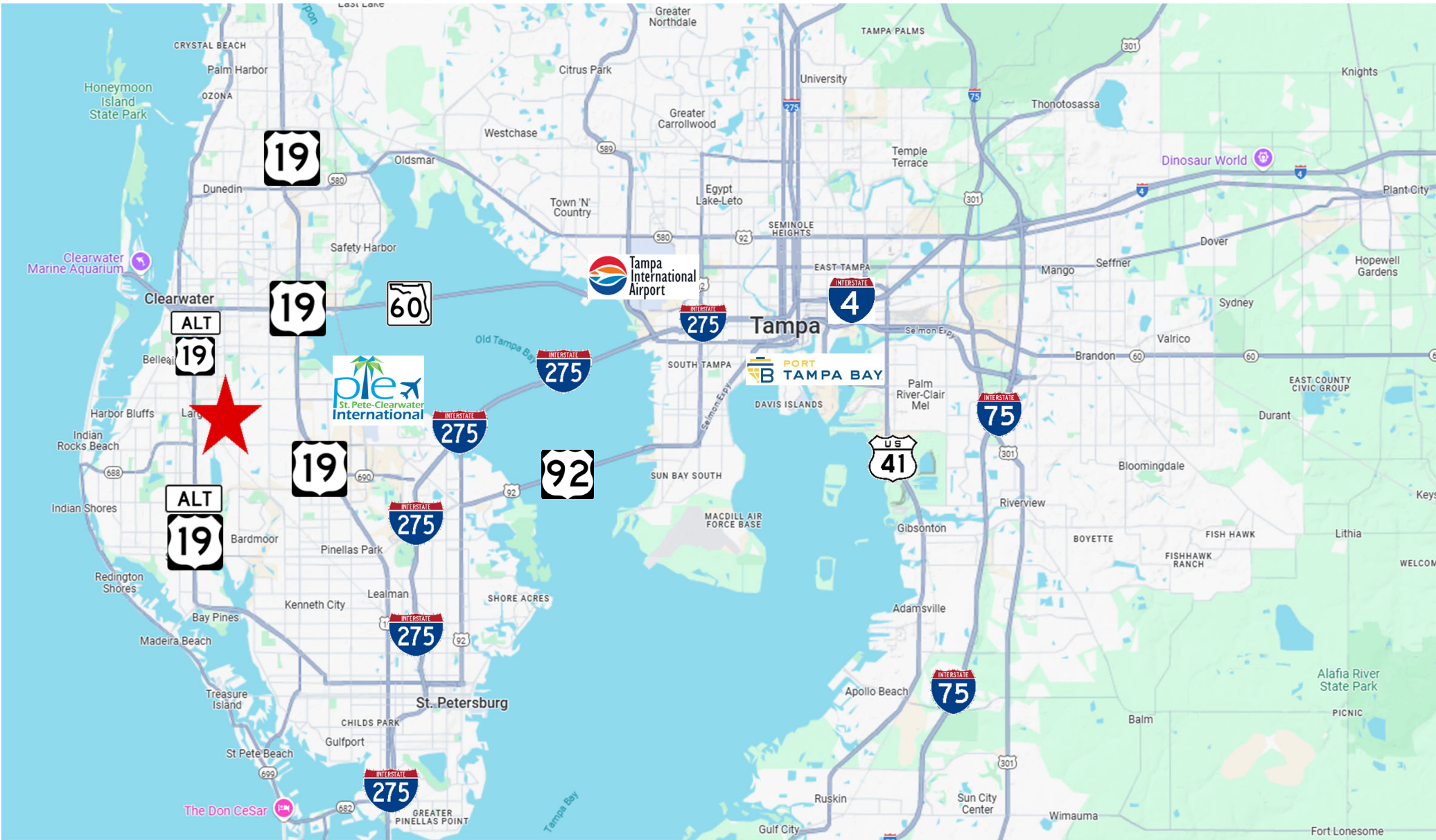
Year Built: 1995

Construction: Mix of Metal with steel frame and Masonry

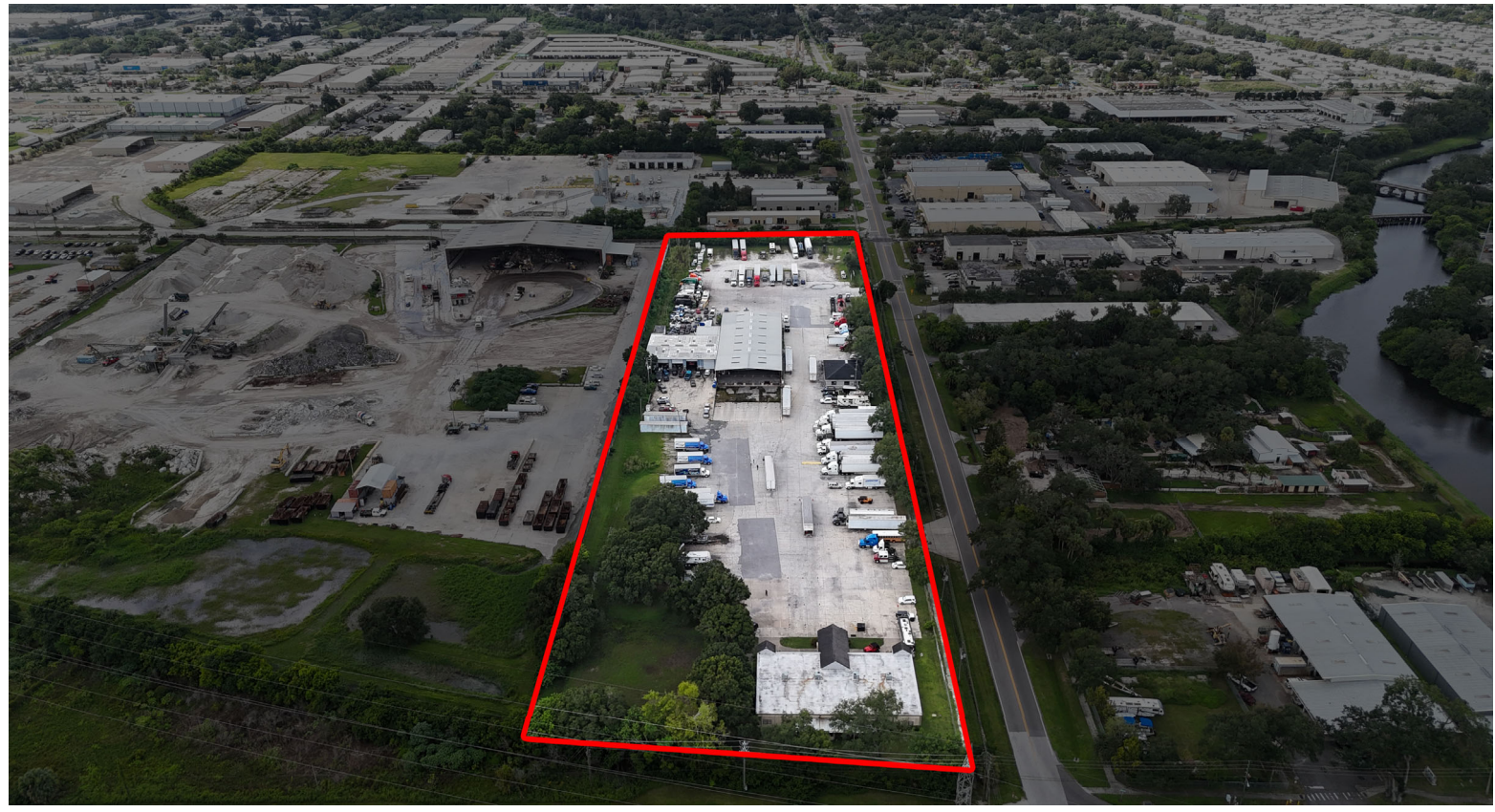
Ideal users: Trucking & transportation companies, truck repair facilities, outdoor machinery & equipment rental companies, fleet vehicle companies, heavy parking intensive users, landscape companies, vehicle repair users, roofing/fence companies, construction materials/barricades companies, utility contractors, and infrastructure-related companies, piping & tubing companies, steel fabrication companies, lumber yard companies, fuel distribution companies, container storage users, etc



Quick Access to US-19, Ulmerton Rd, Starkey Rd, Clearwater / St. Pete Airport, I-275, I-75, US 41, Port of Tampa Bay, and Tampa International Airport



Property Photos



Property Photos





Contact for pricing and more info:

Robbie Lober
Managing Member
727 999 1806
Robbie@Loberrealestate.com

Devin Beeler
Senior Associate
727 709 2179
Devin@Loberrealestate.com

LOBER
REAL ESTATE INVESTMENTS AND LEASING

The information contained in this document has been obtained from sources believed reliable. While Lober Real Estate LLC does not doubt its accuracy, Lober Real Estate LLC has not verified it and makes no guarantee, warranty, or representation about it. It is your responsibility to independently confirm its accuracy and completeness. Any projections, opinions, assumptions, or estimates used are for example only and do not represent the current or future performance of the property. The value of this transaction to you depends on tax and other factors which should be evaluated by your tax, financial, and legal advisors. You and your advisors should conduct a careful, independent investigation of the property to determine to your satisfaction the suitability of the property for your needs.