

# Office Buildings For Sale

# 4695

South Atlanta Rd  
Smyrna, GA 30080

## 16,855 SF



[Click to View the Building Video](#)



**Hansell Roddenbery**  
hroddenbery@cresa.com  
404.808.1287



**Joe Grace**  
jgrace@cresa.com  
404.483.7319



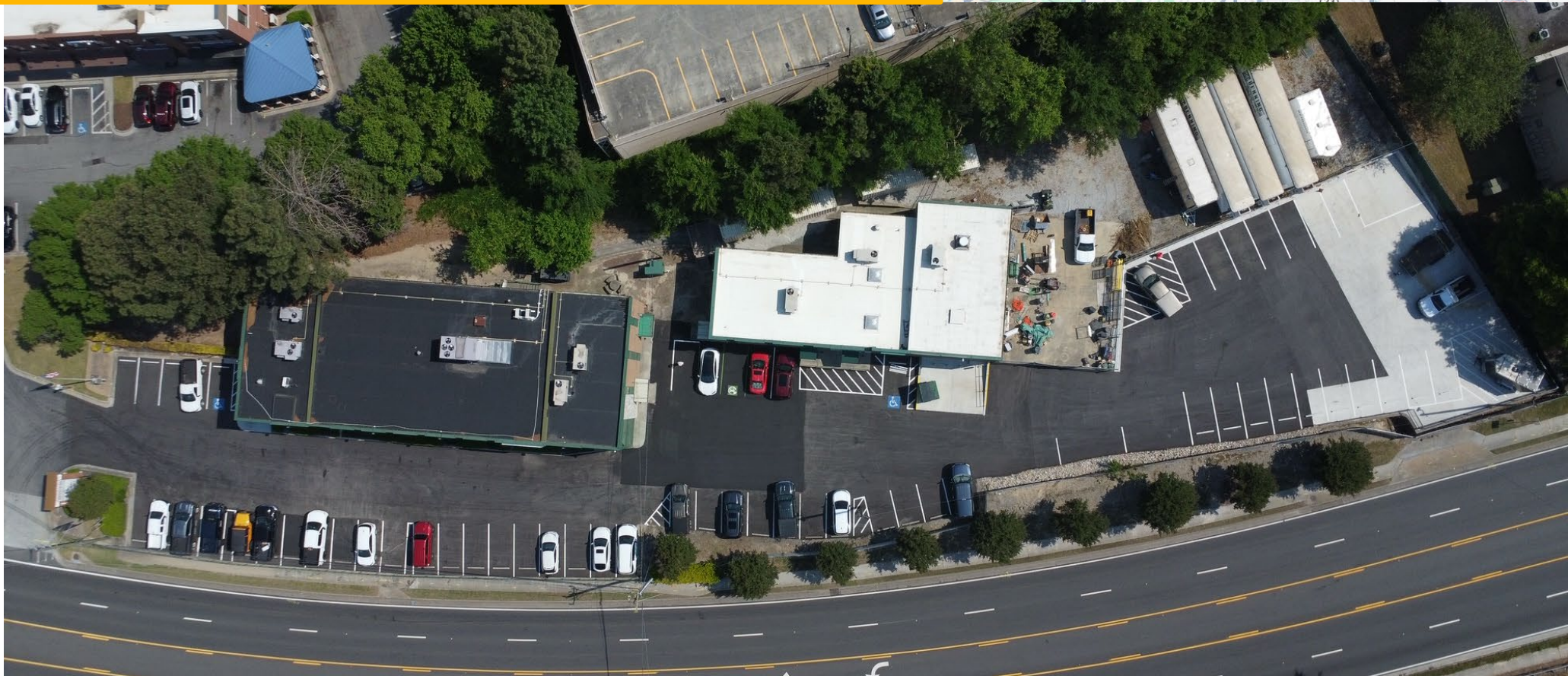
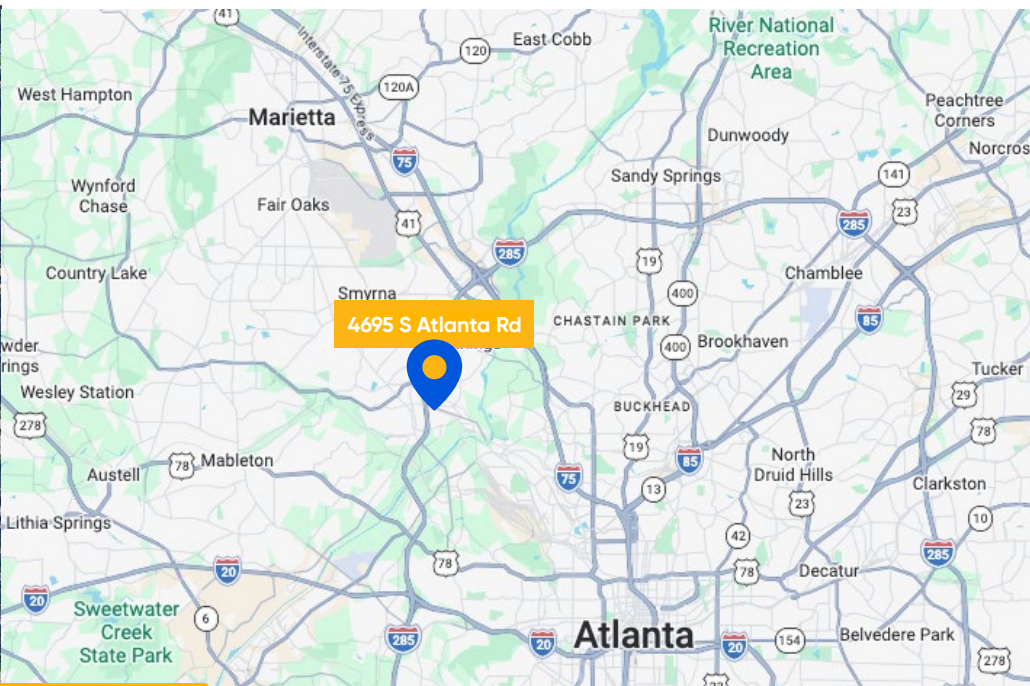
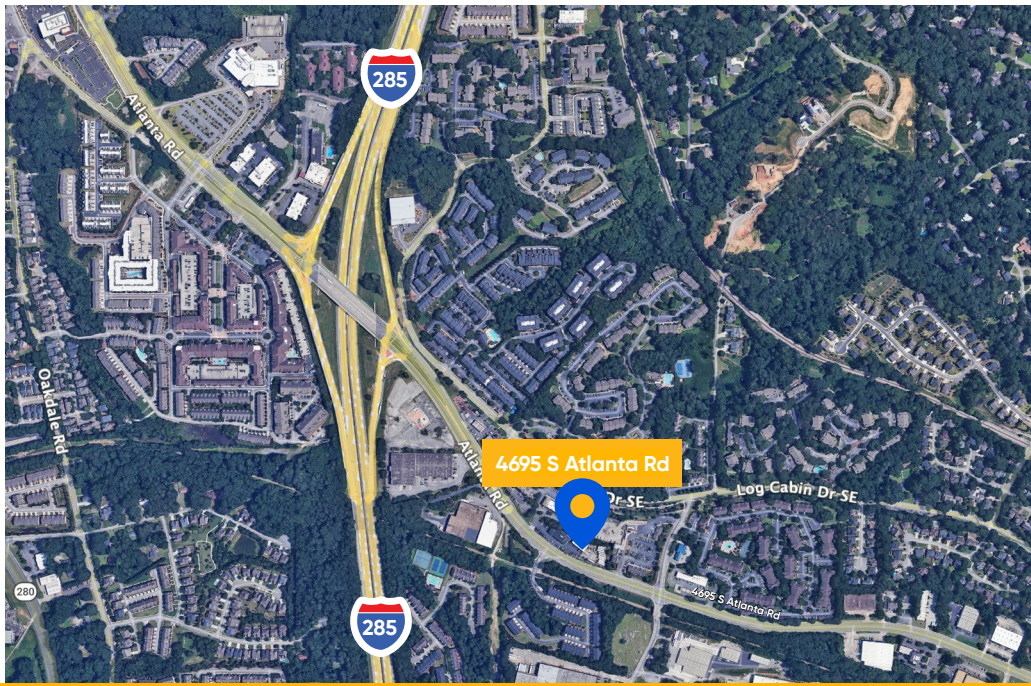
**Ben Jennings**  
bjennings@cresa.com  
404.998.3420

cresa

# Property Highlights

- 2 office buildings totaling 16,855 rsf
- 1.41 acre site on South Atlanta Rd .5 miles from 285
- Main building (13,000 rsf) built in 1982 and secondary building (3,855 rsf) built in 1983
- Both buildings were substantially renovated in 2025
- Conference room, break and fitness facility
- Training room accommodating 50–100 attendees, depending on configuration.
- 38 private offices, along with rooms to create more offices
- Elevator serving the 2nd floor in the main building
- 62 striped parking spaces repaved in 2025
- Land for additional parking spaces or trailer parking
- General Commercial District and Neighborhood Retail Commercial District zoning. Office use is permitted.







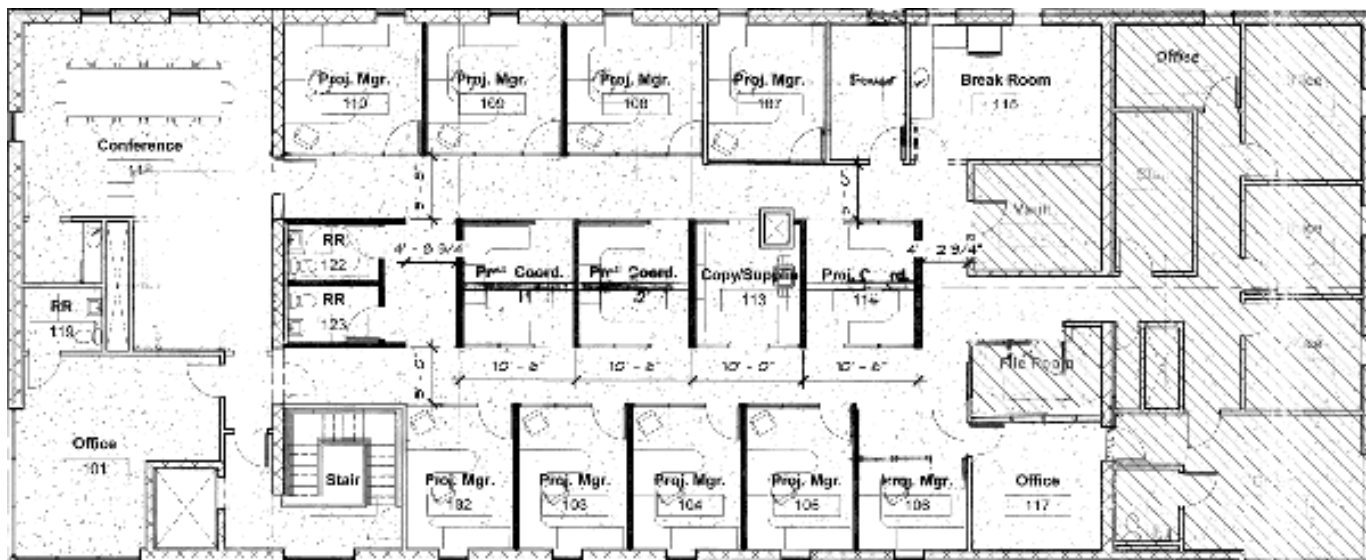


cresa

# Floor Plan



1st Floor  
Main Building



2nd Floor  
Main Building

# For More Information



**Hansell Roddenbery**  
hroddenbery@cresa.com  
404.808.1287



**Joe Grace**  
jgrace@cresa.com  
404.483.7319



**Ben Jennings**  
bjennings@cresa.com  
404.998.3420

# 4695

South Atlanta Rd  
Smyrna, GA 30080

# 16,855 SF



Cresa © 2026. All rights reserved. The information contained in this document has been obtained from sources believed reliable. While Cresa does not doubt its accuracy, Cresa has not verified it and makes no guarantee, warranty, or representation about it. It is your responsibility to independently confirm its accuracy and completeness. Any projections, opinions, assumptions or estimates used are for example only and do not represent the current or future performance of the property. The value of this transaction to you depends on tax and other factors which should be evaluated by your tax, financial and legal advisors. You and your advisors should conduct a careful, independent investigation of the property to determine to your satisfaction the suitability of the property for your needs.

cresa