

# WESTSIDE OFFICES FOR LEASE

TRENT PROPERTIES GROUP



## Three Suites

150: 1,400 SF

250: 1,807 SF

350: 2,000 SF

## LEASE

\$1,500-\$1,850

+ Utilities

ZONING

MX-M

Close to I25

**617 N 17<sup>TH</sup> ST**  
**COLORADO SPRINGS, CO 80904**



Three separate office spaces available for lease. Each has two entrances. All offices are updated with newer flooring and lighting. Great access from I25, near downtown, on the Westside.

## TRENT PROPERTIES GROUP

2115 W COLORADO AVE

COLORADO SPRINGS, CO 80904

TrentPropertiesGroup.com

Amanda Miller Luciano

amanda@TrentPropertiesGroup.com

719.650.9913



All information is from sources deemed reliable and is subject to errors, omissions, change of price, rental, prior sale and withdrawal without notice. PROSPECTS SHOULD CAREFULLY VERIFY EACH ITEM OF INFORMATION CONTAINED HEREIN.

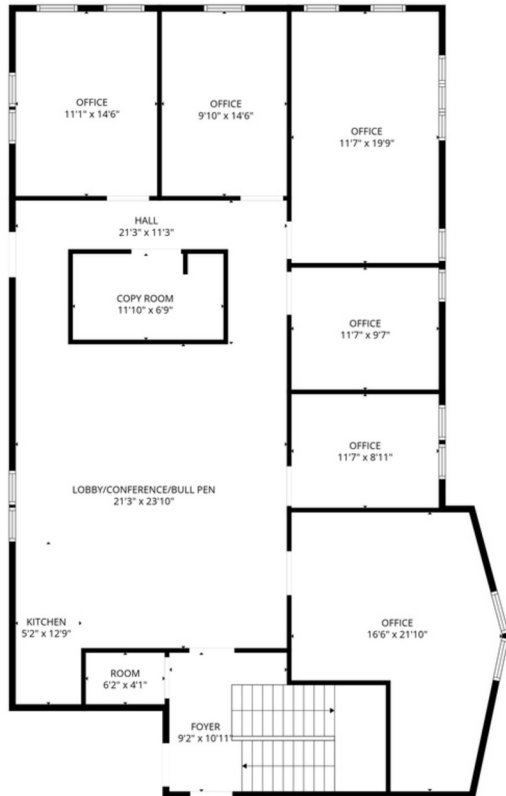
# OFFICE FOR LEASE

+ fenced parking and sheds

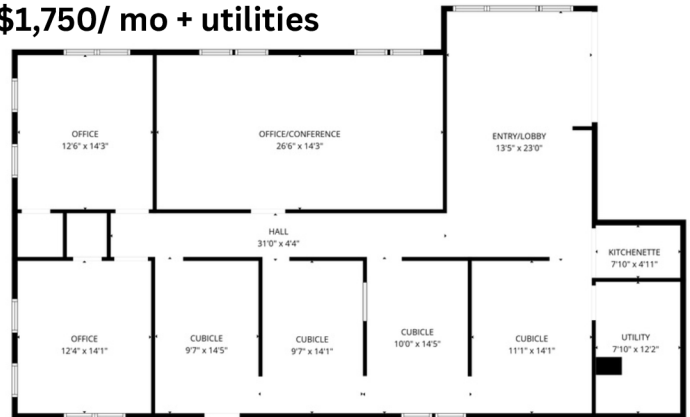
TRENT PROPERTIES GROUP

## 2910 ARCADIA STREET COLORADO SPRINGS, CO 80907

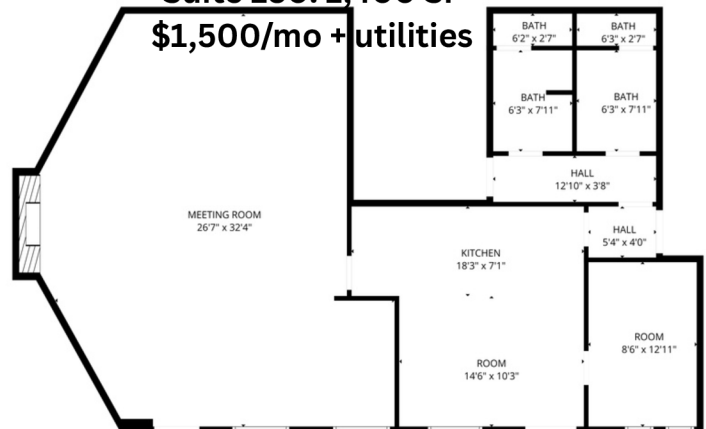
**Suite 250: 1,807 SF**  
**\$1,850/mo + utilities**



**Suite 300: 2,000 SF**  
**\$1,750/ mo + utilities**



**Suite 150: 1,400 SF**  
**\$1,500/mo + utilities**



## FUNCTIONAL AND AFFORDABLE WESTSIDE OFFICE SPACE

These offices are clean and bright with newer luxury vinyl plank flooring and LED lighting. All three available spaces offer intelligent layouts with space for conferences, large meetings, or bull pens plus private hard-walled offices.

And don't miss the views! Stunning Pikes Peak views from all three spaces.

- Functional layout
- Pikes Peak Views
- Ample parking
- Affordable rate

**TRENT PROPERTIES GROUP**

2115 W COLORADO AVE

COLORADO SPRINGS, CO 80904

TrentPropertiesGroup.com

**AMANDA MILLER LUCIANO**

amanda@TrentPropertiesGroup.com

719.650.9913



All information is from sources deemed reliable and is subject to errors, omissions, change of price, rental, prior sale and withdrawal without notice. PROSPECTS SHOULD CAREFULLY VERIFY EACH ITEM OF INFORMATION CONTAINED HEREIN.