

# 960 TURNPIKE STREET

Canton, MA

1,800 SF

OFFICE SPACE

FOR LEASE



## BUILDING SPECIFICATIONS

Building Area: 21,600 SF

Available Space: 1,800 SF

Ceiling Height: 10 FT

Parking Spaces: 90

Power: 800 AMPS

YEAR BUILT: 1989

GAS: YES

SEWER: YES

WATER: MUNICIPAL

THE  
NAUGHTON COMPANY  
DEVELOPMENT • BROKERAGE • MANAGEMENT

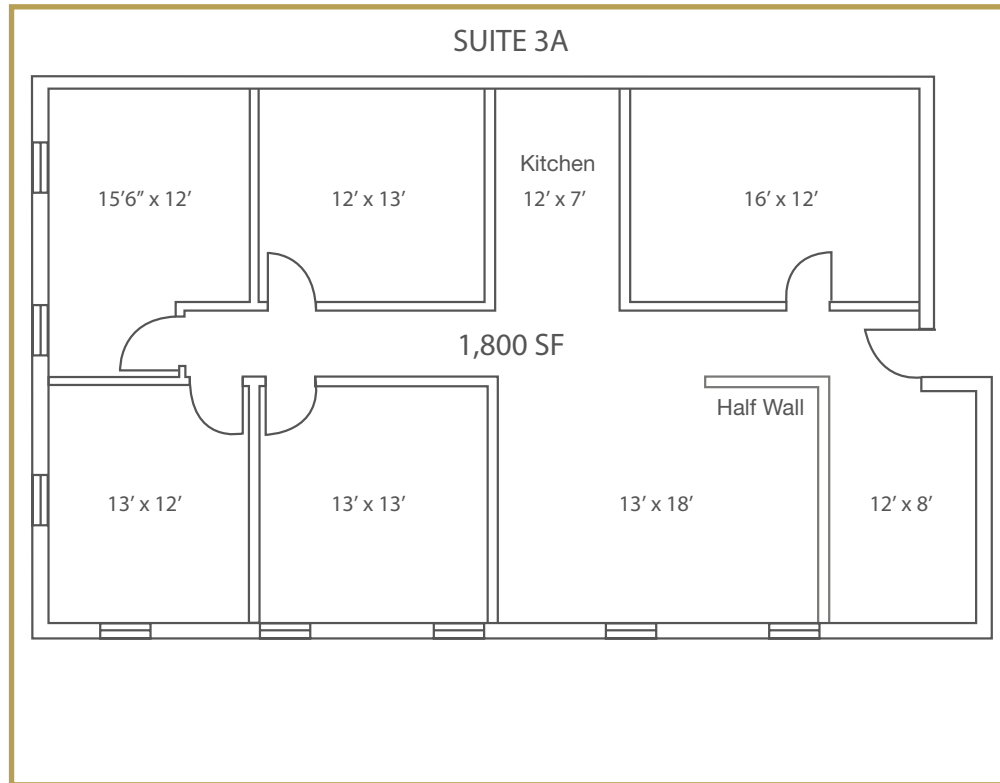
3 SUMMER STREET HINGHAM HARBOR HINGHAM, MA 02043

FOR MORE INFORMATION CONTACT  
JOHN NAUGHTON  
781-740-1222 John@CommercialRE.com

# 960 TURNPIKE STREET

Canton, MA

## FLOOR PLAN



### THE NAUGHTON COMPANY

DEVELOPMENT • BROKERAGE • MANAGEMENT

3 SUMMER STREET HINGHAM HARBOR HINGHAM, MA 02043

FOR MORE INFORMATION CONTACT  
JOHN NAUGHTON  
781-740-1222 John@CommercialRE.com

ALL INFORMATION HAS BEEN OBTAINED FROM SOURCES BELIEVED RELIABLE. NO WARRANTIES OR REPRESENTATIONS, EXPRESSED OR IMPLIED, ARE MADE AS TO THE ACCURACY OR COMPLETENESS OF THE INFORMATION CONTAINED HEREIN. AND SAME IS SUBMITTED SUBJECT TO ERRORS, OMISSIONS, RENTAL OR OTHER CONDITIONS, WITHDRAWAL WITHOUT NOTICE, AND TO ANY SPECIAL LISTING CONDITIONS IMPOSED BY OUR PRINCIPALS. ALL SIZES ARE APPROXIMATE, THE NAUGHTON COMPANY MAKES NO COMMITMENT TO UPDATE THE INFORMATION CONTAINED HEREIN, AND MAY MAKE CHANGES TO THESE MATERIALS AT ANY TIME WITHOUT NOTICE. IN NO EVENT SHALL THE NAUGHTON COMPANY OR ITS AFFILIATES BE LIABLE FOR ANY DAMAGES WHATSOEVER (INCLUDING, WITHOUT LIMITATION, DAMAGES FOR LOSS OF PROFITS, CLOSING SCHEDULING, OR LOSS OF OPPORTUNITY) ARISING OUT OF THE USE OF THE INFORMATION CONTAINED HEREIN.