

# Corporate Exchange IV

2400 Corporate Exchange Drive

2400 Corporate Exchange Drive  
Columbus, OH 43231  
[www.cbre.com/columbus](http://www.cbre.com/columbus)





## Corporate Exchange IV

2400 Corporate Exchange Drive | Columbus, OH 43231



FLOOR	SUITE #	AVAILABLE SF	RATE PSF	SPACE NOTES
First Floor	Suite 150	5,591 SF	\$16.00 FSG	Available 3/1/2026 or before
First Floor	Suite 160A	4,328 SF	\$16.00 FSG	Mostly open space
Second Floor	Suite 210	3,120 SF	\$16.00 FSG	Mostly open space with kitchenette
Second Floor	Suite 220	4,255 SF	\$16.00 FSG	Mostly open space
Second Floor	Suite 230	2,144 SF	\$16.00 FSG	Mostly private offices
Second Floor	Suite 240	2,703 SF	\$16.00 FSG	Mostly private offices
Second Floor	Suite 250	2,228 SF	\$16.00 FSG	Mix of private offices and open space
Third Floor	Suite 300	32,196 SF	\$16.00 FSG	Can be divisible to 5,000 SF

Suite 150 and 160A can be combined for a total of 9,919 SF.

Suite 210 and 220 can be combined for a total of 7,375 SF.

## Property Overview

2400 Corporate Exchange Drive is a three-story, 93,462 SF office building located in a professional business park. The building has great visibility with immediate access to Interstate 270 and Cleveland Avenue. It is within close proximity to numerous amenities such as restaurants, lodging, retail, banks and daycare facilities.

- Beautiful lobby with seating area
- Signage available on the lobby directory and at the suite entrance
- Open, unreserved surface parking lot
- Underground parking available
- Parking lot entry controlled by full-service traffic signal onto Cleveland Avenue
- 2,144 SF - 56,565 SF Available
- Lease Rate: \$16.00 FSG



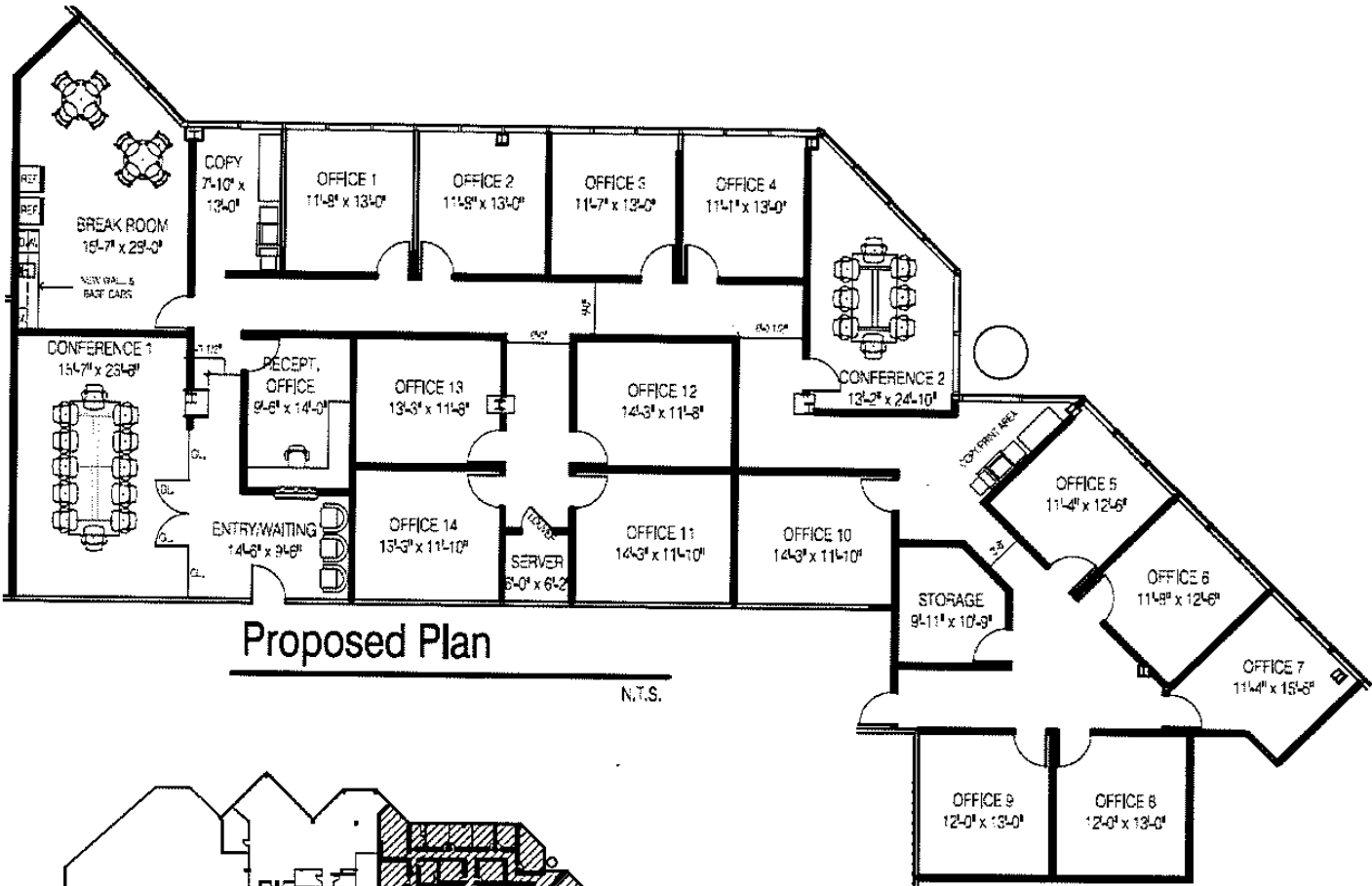


For Lease



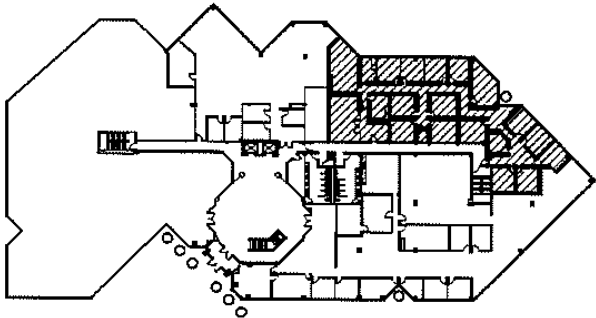


SUITE 150 - 5,591 SF



Proposed Plan

N.T.S.



Building Key Plan

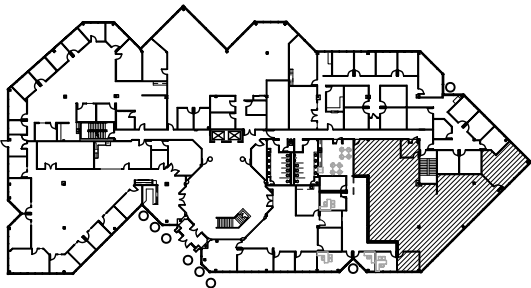
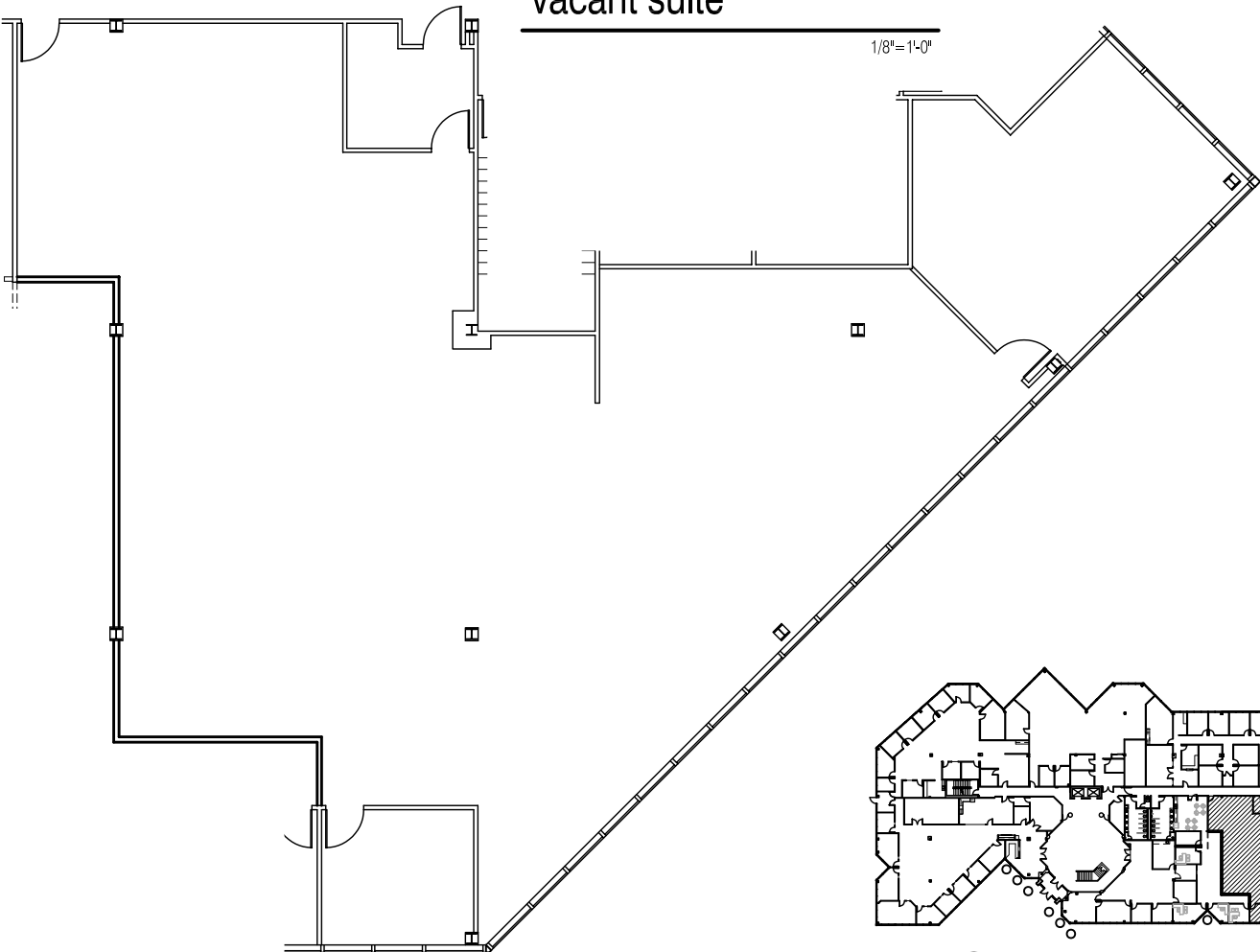
FIRST FLOOR

N.T.S.

SUITE 160A - 4,328 SF

vacant suite

1/8"=1'-0"



**DRA** **DARIN RANKER ARCHITECTS**  
+ INTERIOR DESIGNERS  
5925 Wilcox Place, Suite E Dublin, OH 43016  
Ph. 614-792-1002 Fax 614-792-1001  
admin@darinranker.com

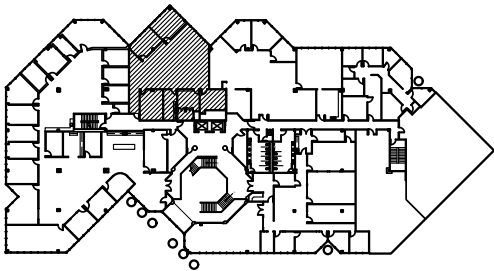


building key plan

1st Floor

N.T.S.

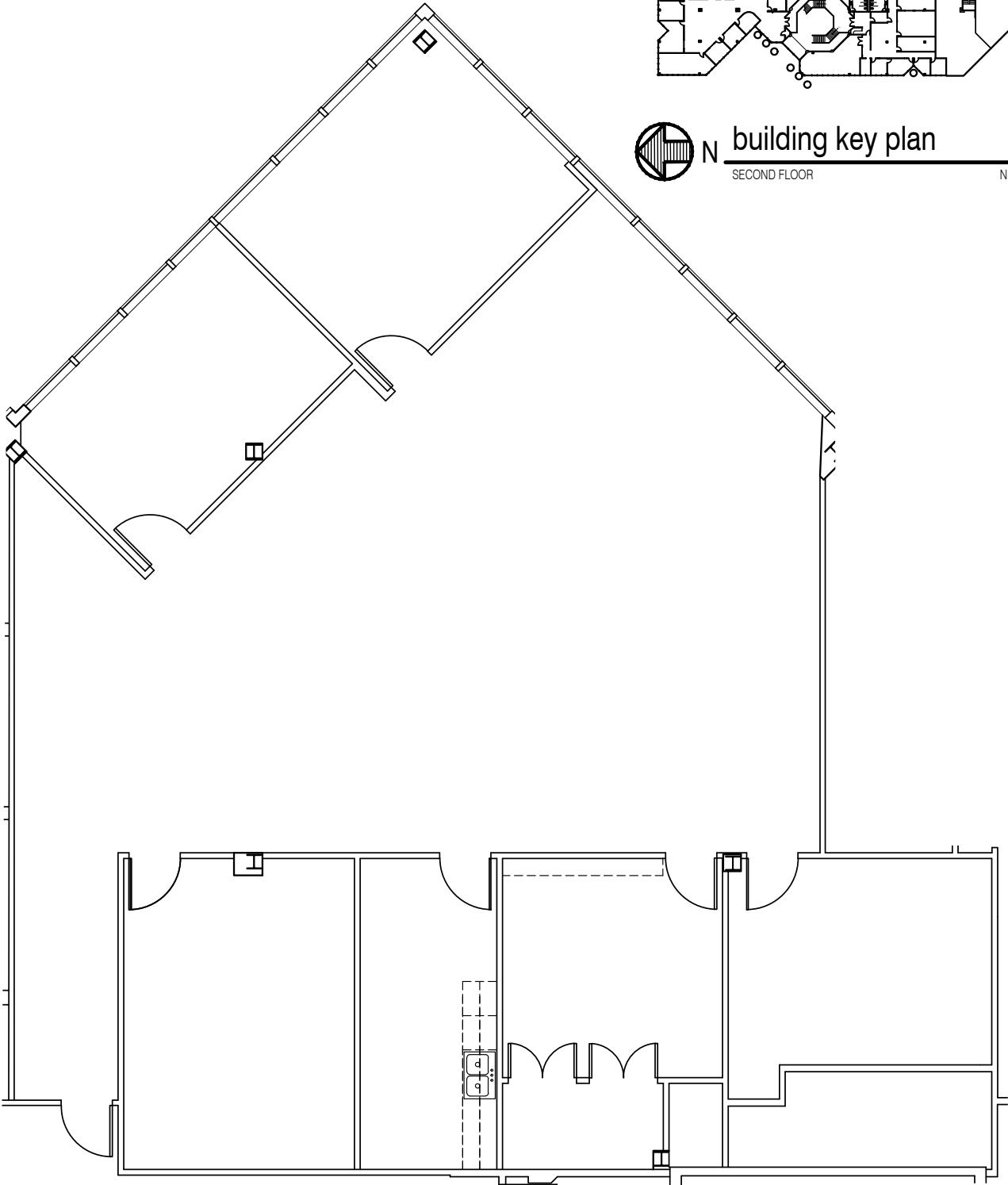
SUITE 210 - 3,120 SF



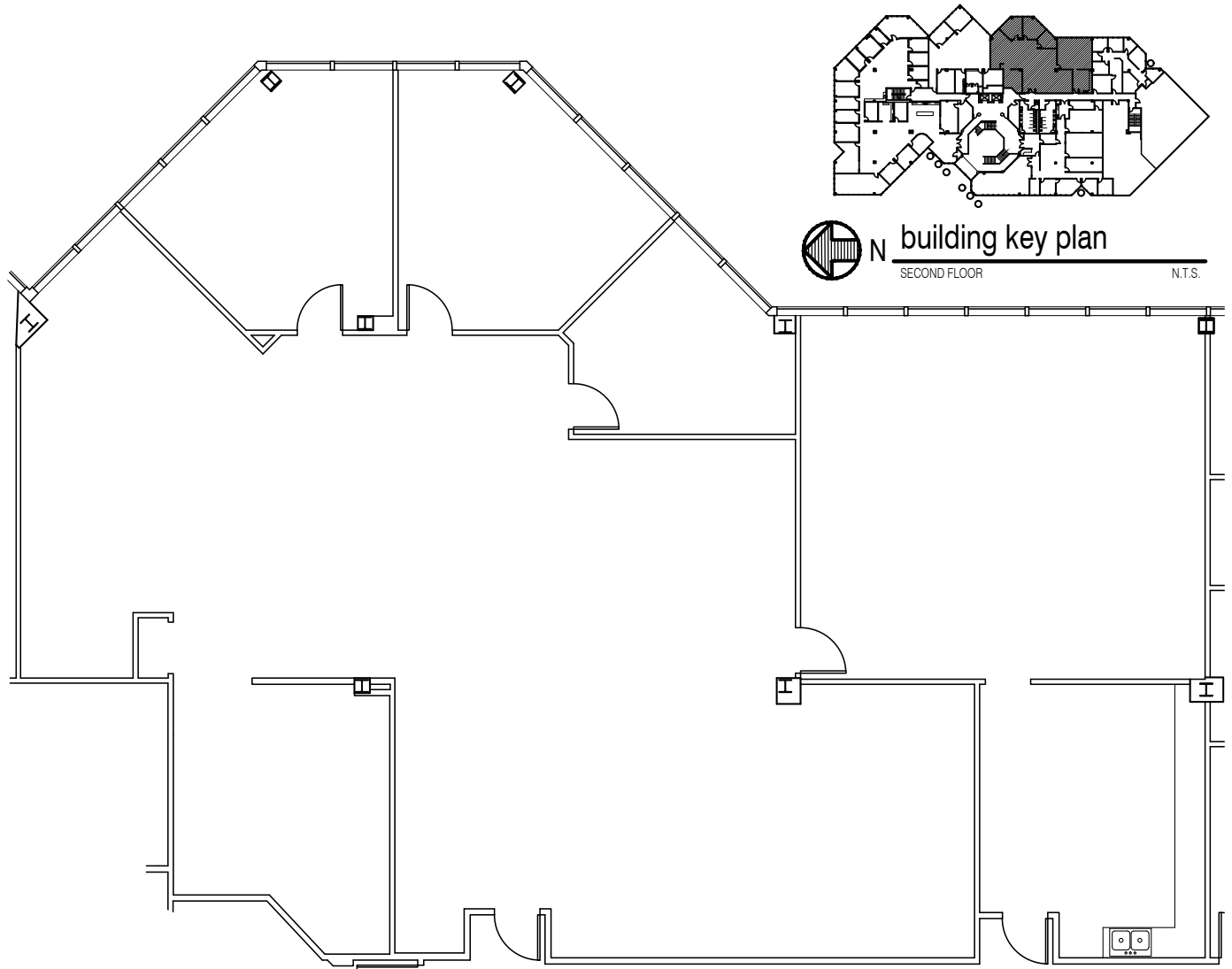
N building key plan

SECOND FLOOR

N.T.S.



# SUITE 220 - 4,255 SF



**DRA** **DARIN RANKER ARCHITECTS**  
+ INTERIOR DESIGNERS  
5925 Wilcox Place, Suite E Dublin, OH 43016  
Ph. 614-792-1002 Fax 614-792-1001  
admin@darinranker.com

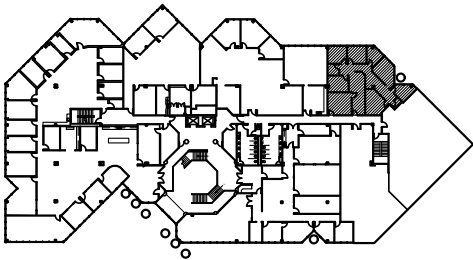
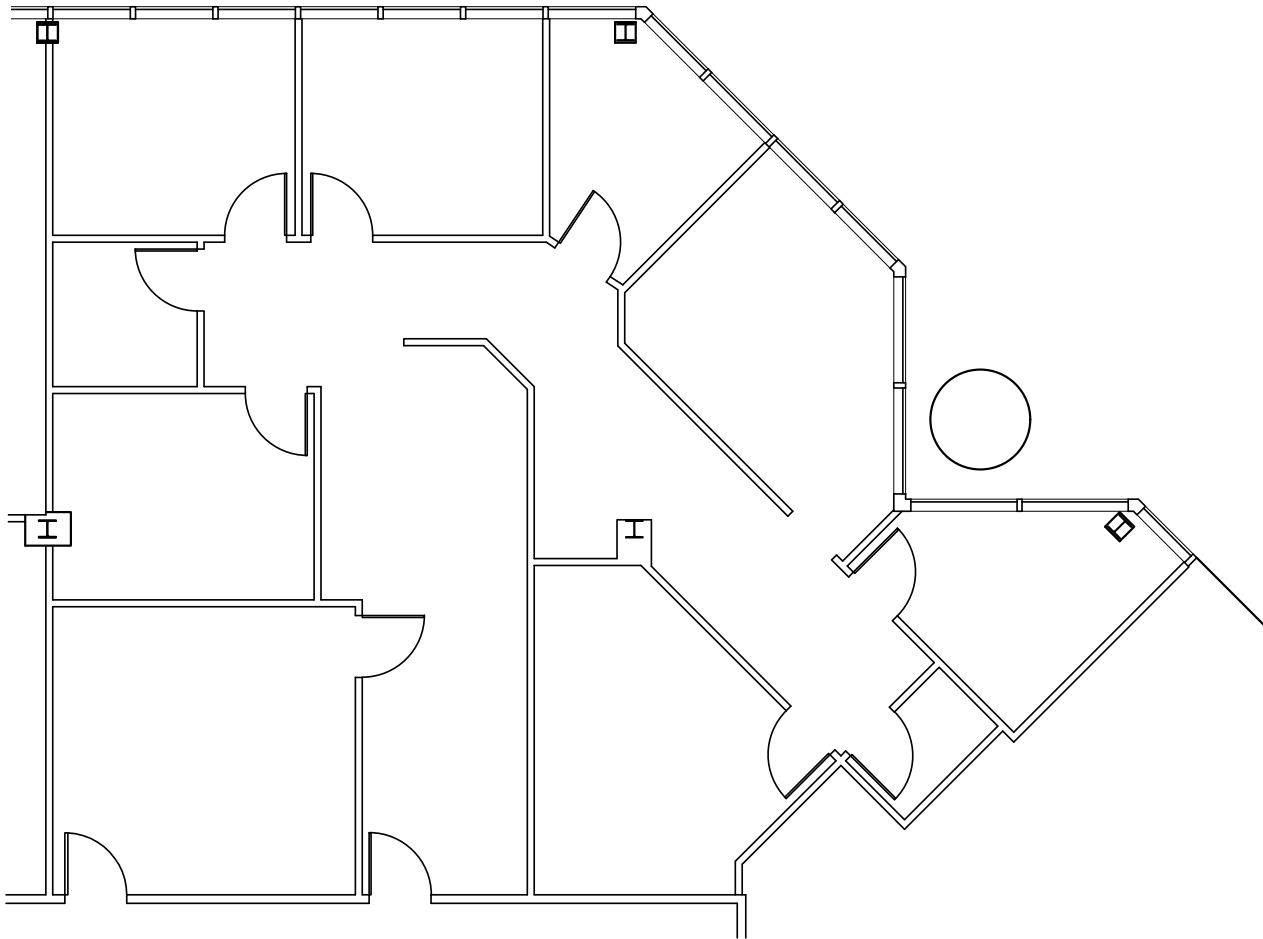
suite 220

2400 corporate exchange

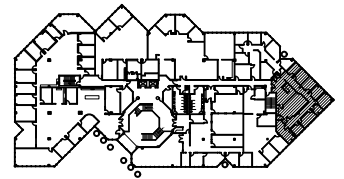
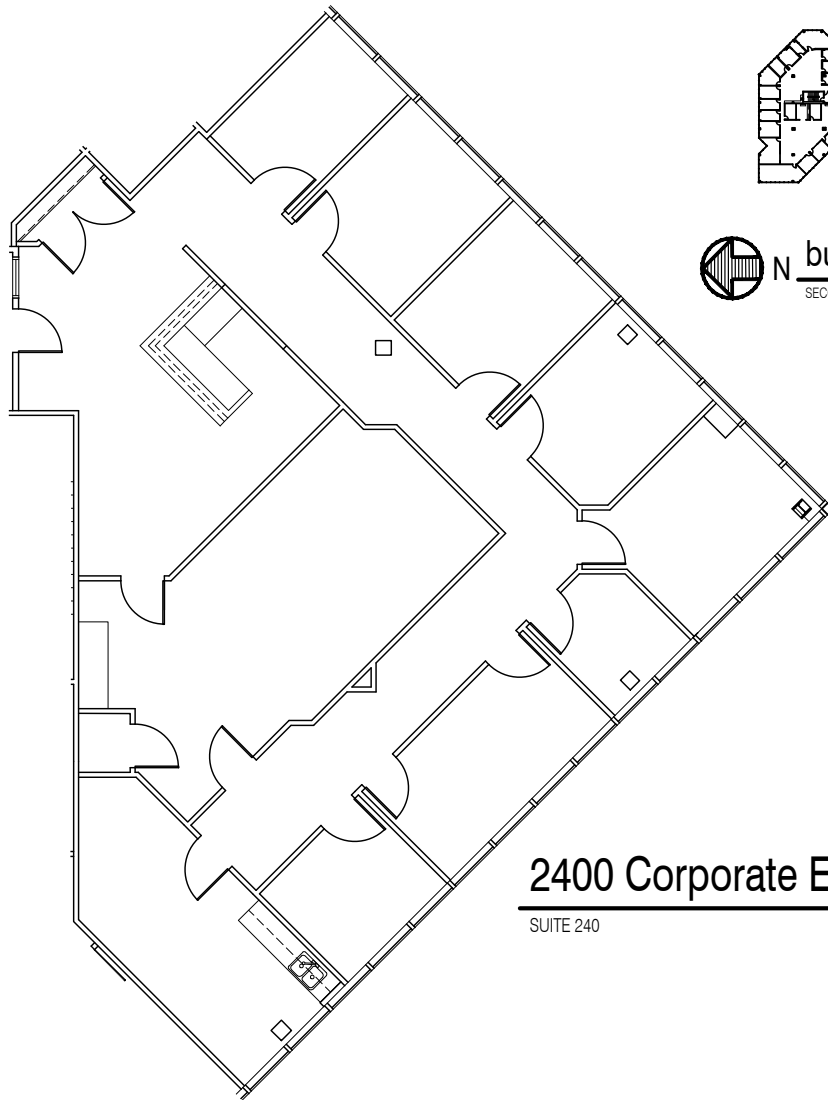
N.T.S.



SUITE 230 - 2,144 SF



## SUITE 240 - 2,703 SF



N building key plan

SECOND FLOOR

N.T.S.

2400 Corporate Exchange

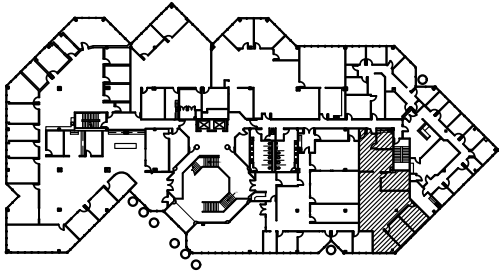
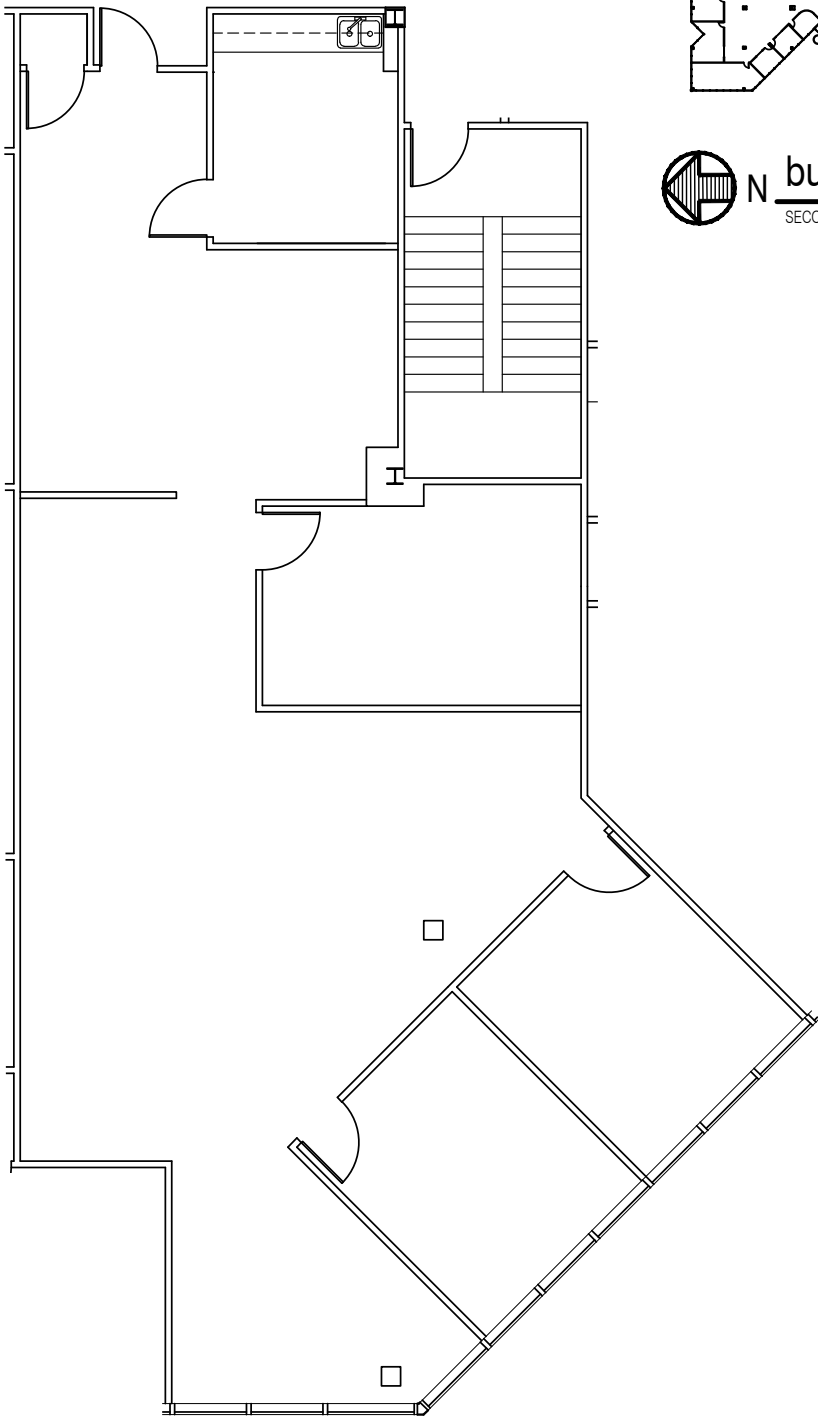
SUITE 240

N.T.S.

**DRA** **DARIN RANKER ARCHITECTS**  
+ INTERIOR DESIGNERS  
5925 Wilcox Place, Suite E Dublin, OH 43016  
Ph. 614-792-1002 Fax 614-792-1001  
admin@darinranker.com

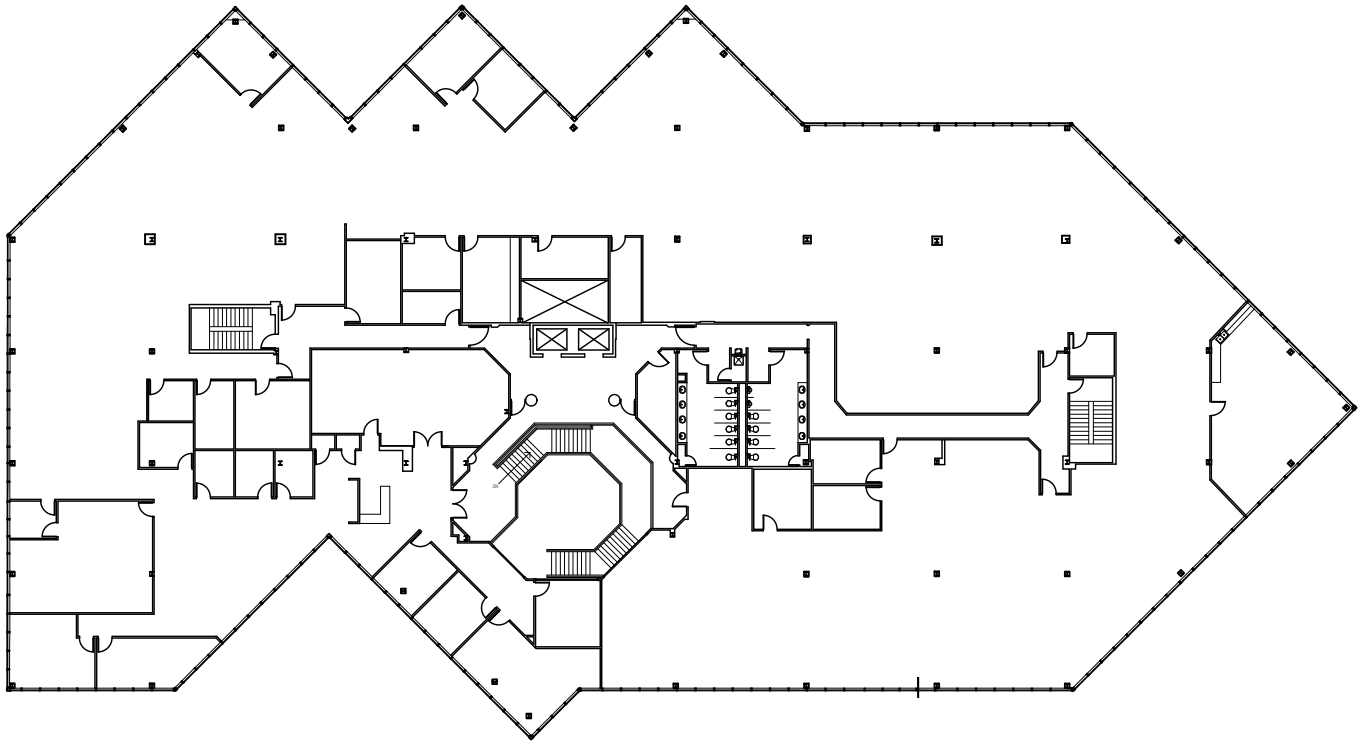


SUITE 250 - 2,228 SF



 N building key plan  
SECOND FLOOR N.T.S.

## SUITE 300 - 32,196 SF



**DRA** **DARIN RANKER ARCHITECTS**  
+ INTERIOR DESIGNERS  
5925 Wilcox Place, Suite E Dublin, OH 43016  
Ph. 614-792-1002 Fax 614-792-1001  
admin@darinranker.com

**2400 Corporate Exchange**  
THIRD FLOOR N.T.S.



## Corporate Exchange IV

2400 Corporate Exchange Drive | Columbus, OH 43231

For Lease



## Contact Us

### Don Matsanoff

First Vice President

+1 614 430 5000

[don.matsanoff@cbre.com](mailto:don.matsanoff@cbre.com)

© 2025 CBRE, Inc. All rights reserved. This information has been obtained from sources believed reliable but has not been verified for accuracy or completeness. CBRE, Inc. makes no guarantee, representation or warranty and accepts no responsibility or liability as to the accuracy, completeness, or reliability of the information contained herein. You should conduct a careful, independent investigation of the property and verify all information. Any reliance on this information is solely at your own risk. CBRE and the CBRE logo are service marks of CBRE, Inc. All other marks displayed on this document are the property of their respective owners, and the use of such marks does not imply any affiliation with or endorsement of CBRE. Photos herein are the property of their respective owners. Use of these images without the express written consent of the owner is prohibited.

[www.cbre.com/columbus](http://www.cbre.com/columbus)

**CBRE**