

NEW TO MARKET

# FOR SALE

Colliers

NNN Investment

Henry Ford-GoHealth Urgent Care  
43821 Ford Road | Canton Twp, MI



**BEN AND BENJI**  
COLLIERS DETROIT REAL ESTATE



**Ben Hubert**  
248 417 7150  
ben.hubert@colliers.com



**Benji Rosenzweig**  
248 752 3762  
ben.rosenzweig@colliers.com

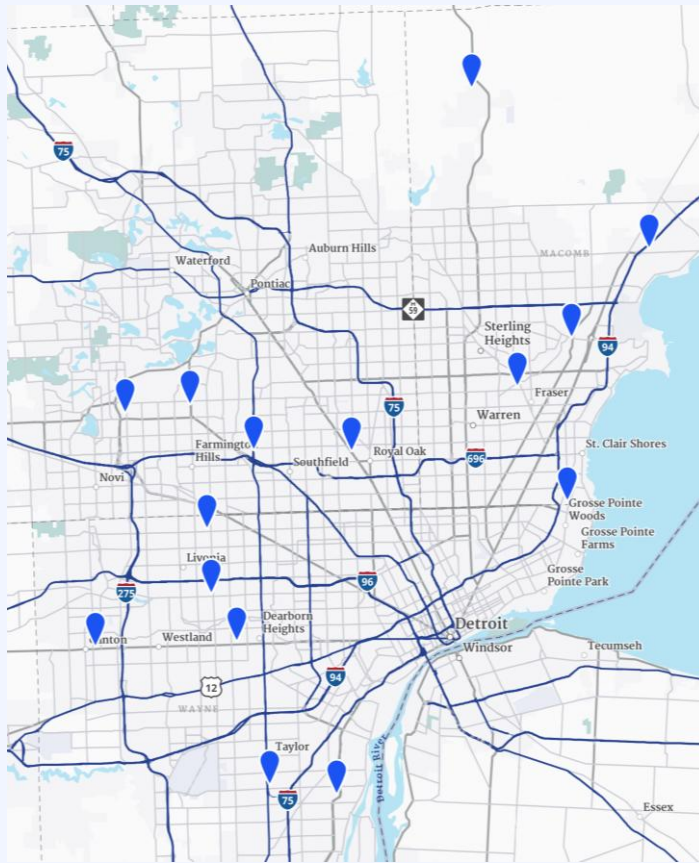
**Colliers Detroit**  
400 W 4<sup>th</sup> Street, Suite 350  
Royal Oak, MI 48067  
colliers.com/detroit





# INVESTMENT HIGHLIGHTS

- **Prime NNN Medical Asset:** Built in 2012, all-brick and glass retail/office building on a high-visibility corridor with strong income and 24 parking spaces.
- **National/Regional Medical Tenant:** Henry Ford-GoHealth Urgent Care occupies the main floor. Established, creditworthy operator with 15 Michigan locations and 400+ nationwide through hospital partnerships.
- **Value-Add:** Upper level includes 1,400 SF of high-end office space suitable for increased income or owner occupancy. Henry Ford-GoHealth pays ALL NNN expenses for the Building.
- **Attractive Investment Metrics:** Stable tenancy, limited management, and upside through value-add and long-term appreciation.
- **Term:** 6.5 years remaining on initial 10-year lease with two 5-year renewal options at 10% increases.
- **Current NOI:** \$125,000/Year, NNN | \$137,500/Year – September 2027.
- **Turnkey Condition:** Well-maintained asset with minimal anticipated capital expenditures.
- **Main Retail Corridor Advantage:** Located on Ford Road with strong visibility near Target, Lowe's, BJ's, Planet Fitness, Kohl's, Ulta, and surrounding retail and dining.
- **Strong Market Fundamentals:** Canton Township median household income is approximately 50% above the Michigan average.
- **Asking Price:** \$2,495,000.00



**MICHIGAN LOCATIONS**



**NNN INVESTMENT**

**ABOUT THE TENANT**



## OUR STORY

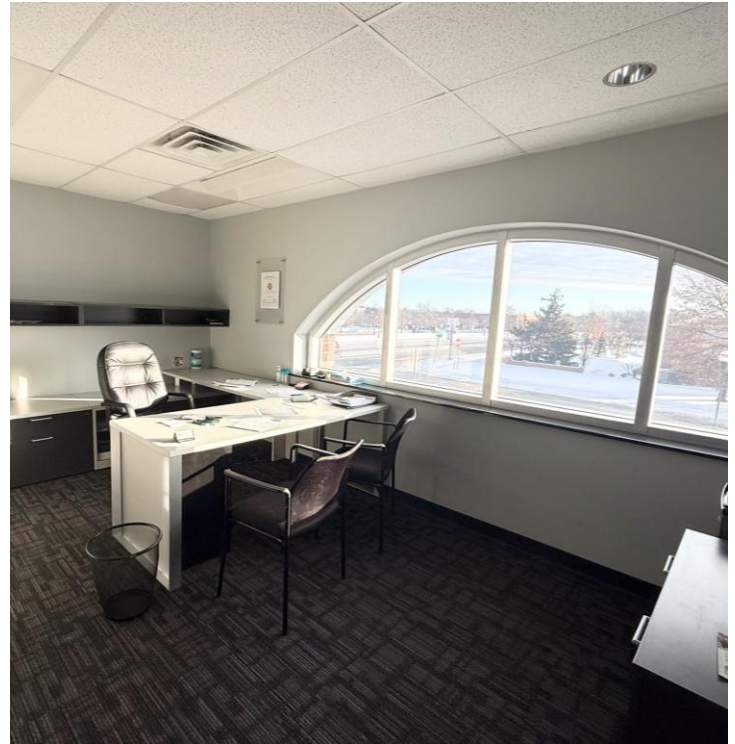
When our customers enter our award-winning centers, they find a welcoming and comfortable environment, state-of-the-art technology and caring team members that help start the healing process immediately. We offer effortless on-demand care, 365 days a year in nearly 400 centers nationwide. We partner with prominent and progressive health systems to support our communities across the entire continuum of care. These are the unparalleled experiences we strive for and how our team goes above and beyond for you.

## OUR MISSION

Our mission is to GO beyond the expectations of our customers, team members, partners and communities by ensuring that their experience is effortless, connected and personal. We're committed to increasing access to quality care across the country, expanding inclusivity and removing the barriers to wellness for all people. Most insurance is accepted, including Medicare and Medicaid.



# VALUE ADD - 2ND FLOOR OFFICE



# PROPERTY AERIAL





# DEMOGRAPHICS



CURRENT YEAR SUMMARY	1 MILE RADIUS	3 MILE RADIUS	5 MILE RADIUS
Total Population	12,884	87,868	186,129
Total Households	5,025	34,250	77,209
Total Family Households	3,495	24,109	49,595
Average Household Size	2.55	2.55	2.40
Median Age	41.4	40.5	41.2
Population Age 25+	9,204	62,863	134,790
2010 – 2020 Population: Annual Growth Rate (CAGR)	0.33%	0.22%	0.54%
2020 – 2023 Population: Annual Growth Rate (CAGR)	-0.70%	-0.50%	-0.23%

## 5 YEAR PROJECTED TRENDS: ANNUAL RATE

Population	-0.44%	-0.35%	-0.24%
Households	-0.07%	-0.02%	0.08%
Families	-0.20%	-0.16%	-0.07%
Median Household Income	2.55%	2.43%	2.18%

## CURRENT YEAR POPULATION BY SEX

Male Population / % Male	6,209 / 48.2%	43,599 / 49.6%	91,527 / 49.2%
Female Population / % Female	6,675 / 51.8%	44,269 / 50.4%	94,602 / 50.8%

## INCOME & HOUSEHOLDS SUMMARY

Median Household Income	\$114,356	\$113,313	\$97,273
Average Household Income	\$130,378	\$141,956	\$128,557
Per Capita Income	\$51,283	\$55,132	\$53,399

## SUMMARY BUSINESS DATA

Total Businesses	477	2,540	6,122
Total Daytime Population	12,523	81,828	187,747
Daytime Population: Workers	6,377	40,711	98,899
Daytime Population: Residents	6,146	41,117	88,848

### Data Notes:

- Household population includes persons not residing in group quarters. Average Household Size is the household population divided by total households. Persons in families include the householder and persons related to the householder by birth, marriage, or adoption.
- Income represents the preceding year, expressed in current dollars. Household income includes wage and salary earnings, interest dividends, net rents, pensions, SSI and welfare payments, child support, and alimony.
- Per Capita Income represents the income received by all persons aged 15 years and over divided by the total population.



**Ben Hubert**  
248 417 7150  
ben.hubert@colliers.com

**BEN AND BENJI**  
COLLIERS DETROIT REAL ESTATE



**Benji Rosenzweig**  
248 752 3762  
ben.rosenzweig@colliers.com

We have no reason to doubt the accuracy of information contained herein, but we cannot guarantee it. All information should be verified prior to purchase and/or lease.