



**6,964 SF AVAILABLE**

5111 South Royal Atlanta Drive  
Suite 5119  
Tucker, GA 30084

OWNED BY:

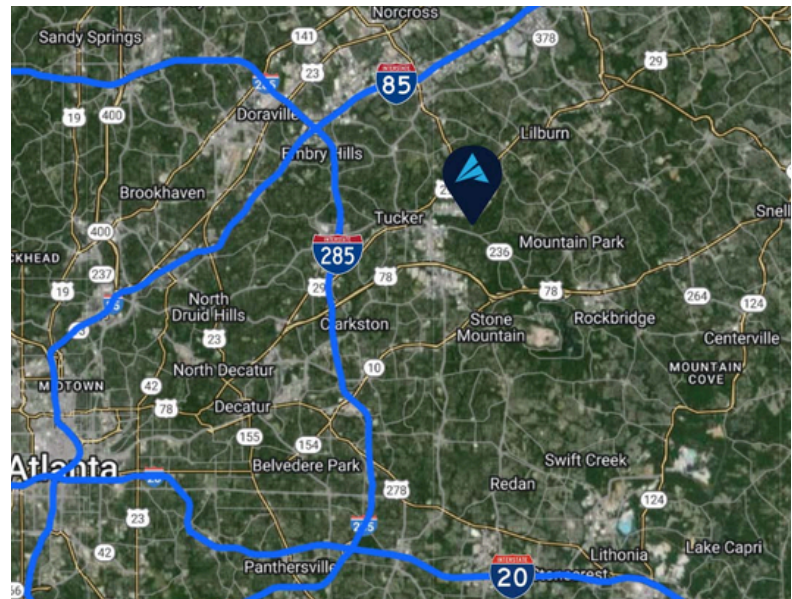
**GID**

**FOR LEASE**



**PROPERTY INFORMATION**

- Total Size:** 6,964 SF
- Office:** 2,692 SF
- Warehouse:** 4,335 SF
- Loading:** Two (2) Dock High Doors  
One (1) Drive-In Door
- Clear Height:** 16'
- Available:** Immediately
- Location:** < 1 mile from Mountain Industrial Blvd  
+/- 5 miles from I-85  
+/- 6 miles from I-285  
+/- 26 miles from Atlanta Airport



**APEX INDUSTRIAL**  
REAL ESTATE ADVISORS

3500 Lenox Road, Suite 1275 | Atlanta, GA 30326 | [apexindustrialre.com](http://apexindustrialre.com)

For more information, please contact:

**RYAN BLACKBURN**

Office: (404) 974-2716  
Cell: (404) 821-7715  
rblackburn@apexindustrialre.com

**ANDY HEAD**

Office: (404) 595-1466  
Cell: (404) 713-4601  
ahead@apexindustrialre.com

**MORGAN MCMENAMY**

Office: (404) 806-6631  
Cell: (404) 771-1199  
mmcmenam@apexindustrialre.com

Although the information contained therein was provided from sources believed to be reliable, Apex Industrial makes no representation, expressed or implied, as to its accuracy and said information is subject to errors, omissions or changes.



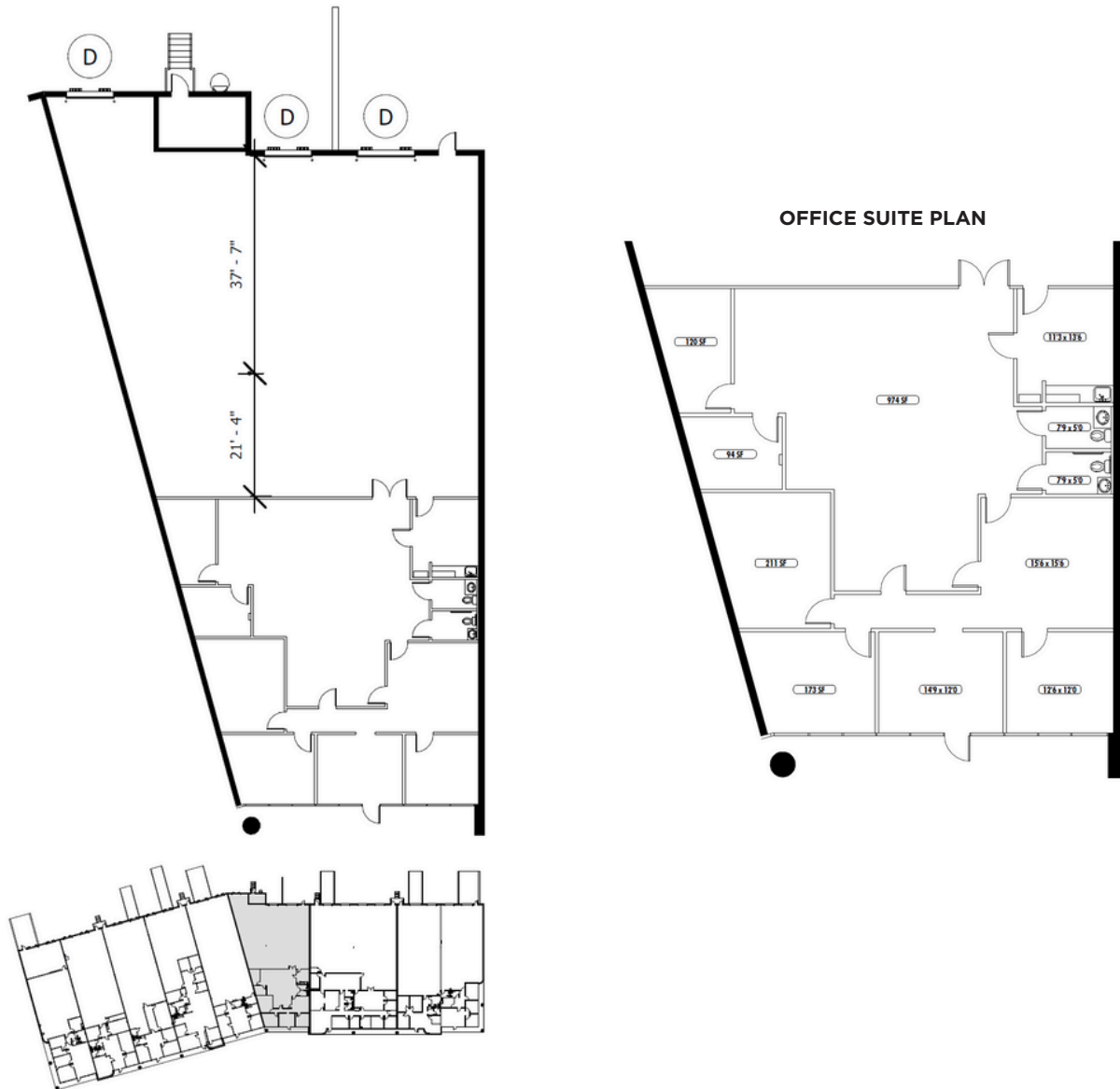
**6,964 SF AVAILABLE**

5111 South Royal Atlanta Drive  
Suite 5119  
Tucker, GA 30084

OWNED BY:



# FLOOR PLAN



**APEX INDUSTRIAL**  
REAL ESTATE ADVISORS

3500 Lenox Road, Suite 1275 | Atlanta, GA 30326 | [apexindustrialre.com](http://apexindustrialre.com)

For more information, please contact:

**RYAN BLACKBURN**

Office: (404) 974-2716  
Cell: (404) 821-7715  
[rblackburn@apexindustrialre.com](mailto:rblackburn@apexindustrialre.com)

**ANDY HEAD**

Office: (404) 595-1466  
Cell: (404) 713-4601  
[ahead@apexindustrialre.com](mailto:ahead@apexindustrialre.com)

**MORGAN MCMENAMY**

Office: (404) 806-6631  
Cell: (404) 771-1199  
[mmcmenary@apexindustrialre.com](mailto:mmcmenary@apexindustrialre.com)

Although the information contained therein was provided from sources believed to be reliable, Apex Industrial makes no representation, expressed or implied, as to its accuracy and said information is subject to errors, omissions or changes.