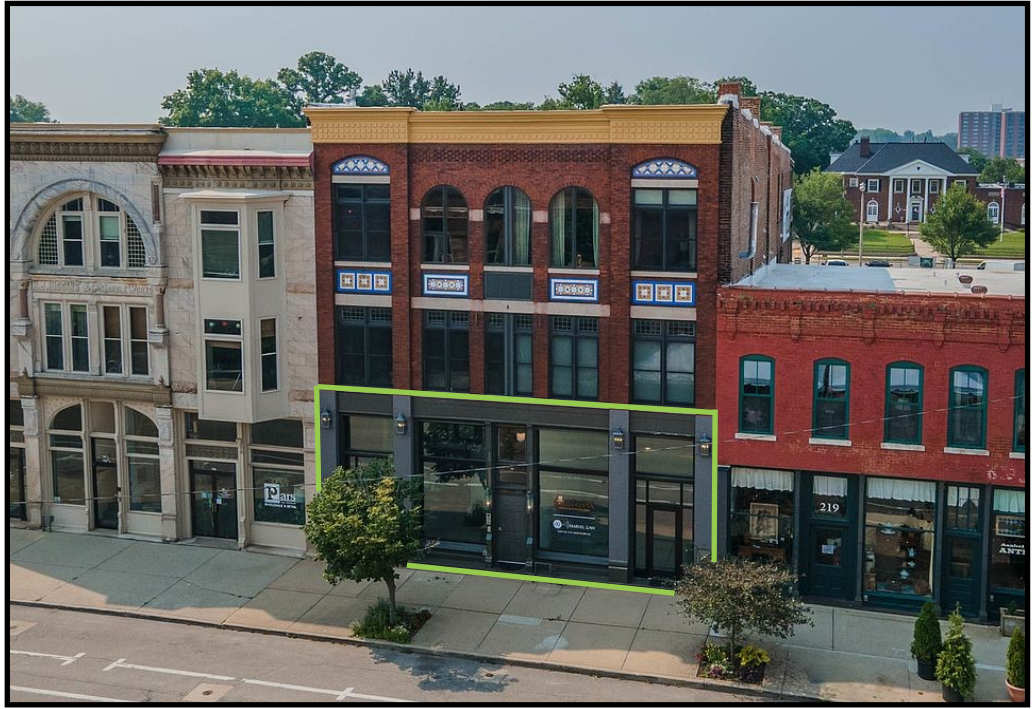


AXIS 360

COMMERCIAL REAL ESTATE

3001½ Gill St.
Suite A
Bloomington, Illinois

www.axis360.co



OFFICE CONDO—Downtown Bloomington—First Floor

ADDRESS

221 E. Front, 1 & 1B
Bloomington, Illinois

SIZE

3,510 sq. ft.

ASKING PRICE

\$299,000

ZONING

D-2

PROPERTY TAXES

\$8,381 (2024)

PARKING

Two (2) Dedicated Spaces

BUILT

1888



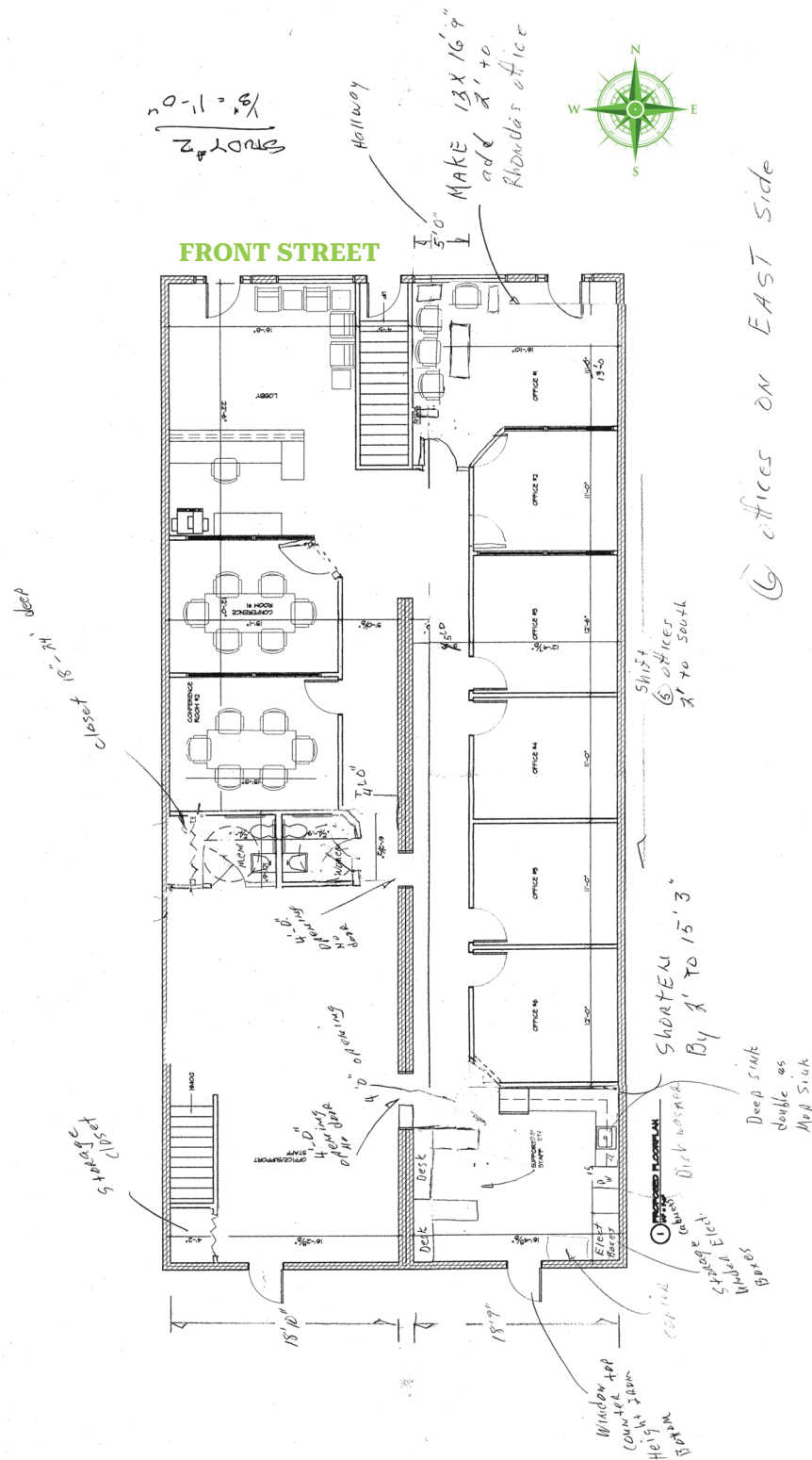
- ◆ Beautiful 1st Floor office condo on East Front St.
- ◆ Professionally finished offices & conference rooms
- ◆ Condo controls 52% ownership
- ◆ Close to Courthouse
- ◆ Dedicated parking spaces
- ◆ Full Basement
- ◆ Priced to Sell



Mike Talkington
Commercial Broker
mtalkington@axis360.co
(309) 530-4913

Visit our Website:
www.axis360.co



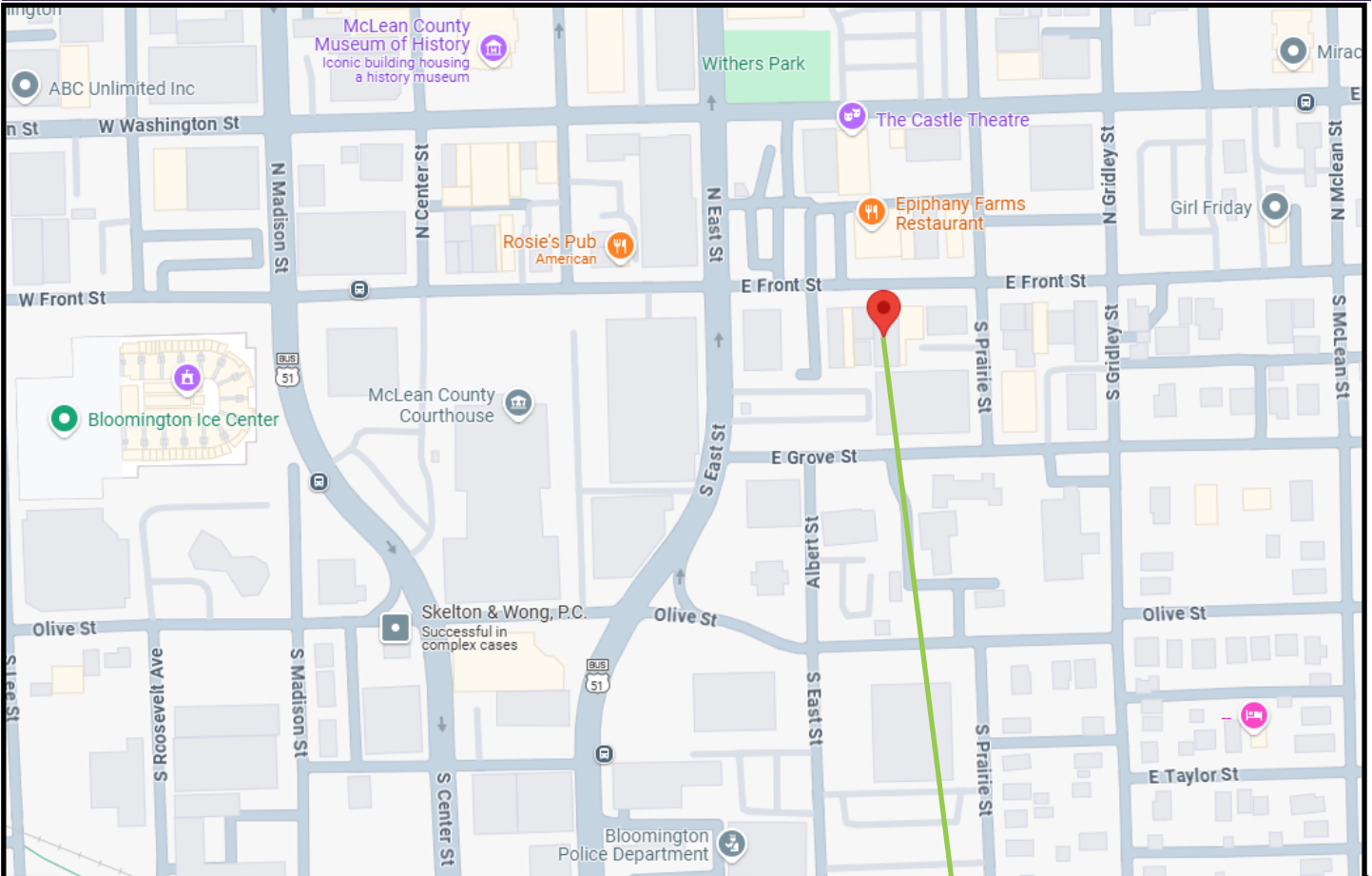




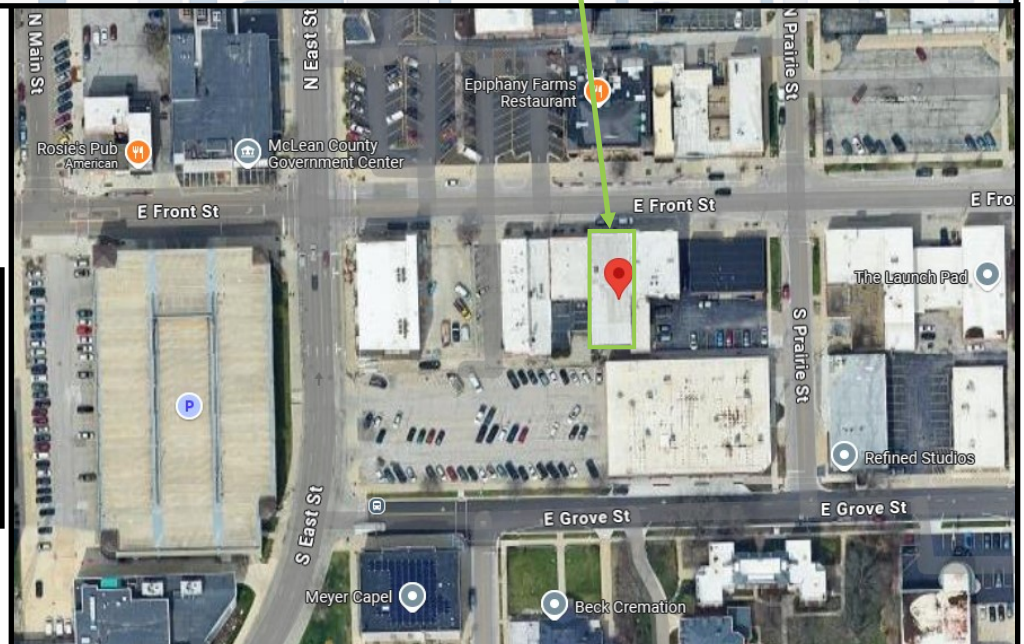
3001½ Gill St.
Suite A
Bloomington, Illinois

www.axis360.co

Visit our Website:



221 E. Front Street
Bloomington, Illinois



Mike Talkington, Commercial Broker

mtalkington@axis360.co

(309) 530-4913