

ECHO EXECUTIVE PLAZA

899 Mountain Avenue | Springfield | Union County | New Jersey



Echo Executive Plaza Office Building is a 41,100 sf (+/-) three-story Class A office building. The property has attracted financial, insurance and area service companies looking for a convenient location with excellent area amenities. The property's second and third floors offer balconies. The building allows for tenant signage along Route 22.

Echo Executive Plaza Office Building is part of Echo Executive Plaza, which also consists of Echo Plaza Shopping Center: a 66,567 sf (+/-) community retail center. The center contains 14 units ranging in size from 1,500 to 24,756 sf (+/-) and is anchored by No Body Denied Fitness. Other tenants include Outback Steakhouse and Sherwin Williams.

DEMOGRAPHICS

Radius	3 Miles	5 Miles	7 Miles
Population	103,755	319,902	773,703
Households	38,336	115,568	275,335
Average Household Income	\$125,484	\$127,614	\$119,589

11/21

SUITE SIZES FOR LEASE FROM:
2061, 4152 up to 6213 sf (+/-)

FEATURES

- Optional built to suit office space designed to fit your individual needs
- 160 Surface parking spaces and 20 covered parking spaces
- High-speed internet access/Verizon Fios also available
- Tremendous visibility
- Located on 2.39 acres
- Security monitors situated along building's perimeter
- Highway commercial zoning
- 241 feet of frontage on Route 22 and 263 feet of frontage along Mountain Avenue

(908) 874-8686 | LarkenAssociates.com

Immediate Occupancy | Brokers Protected

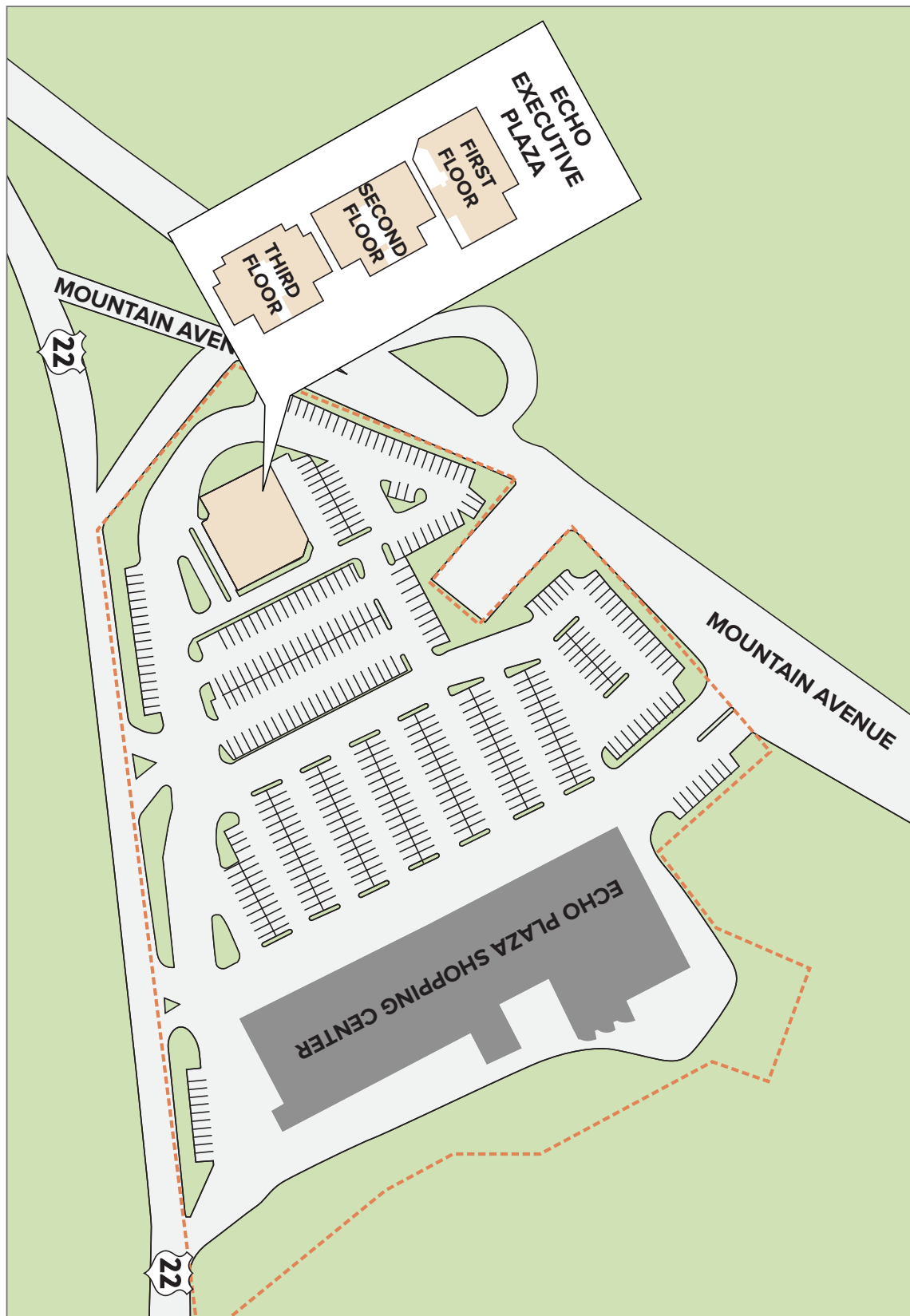


Raider Realty is a Licensed Real Estate Broker. No warranty or representation, express or implied, is made to the accuracy of the information contained herein and same is submitted subject to errors, omissions, change of price, rental or other conditions, withdrawal without notice and to any special listing conditions, imposed by our principals and clients. 2/24



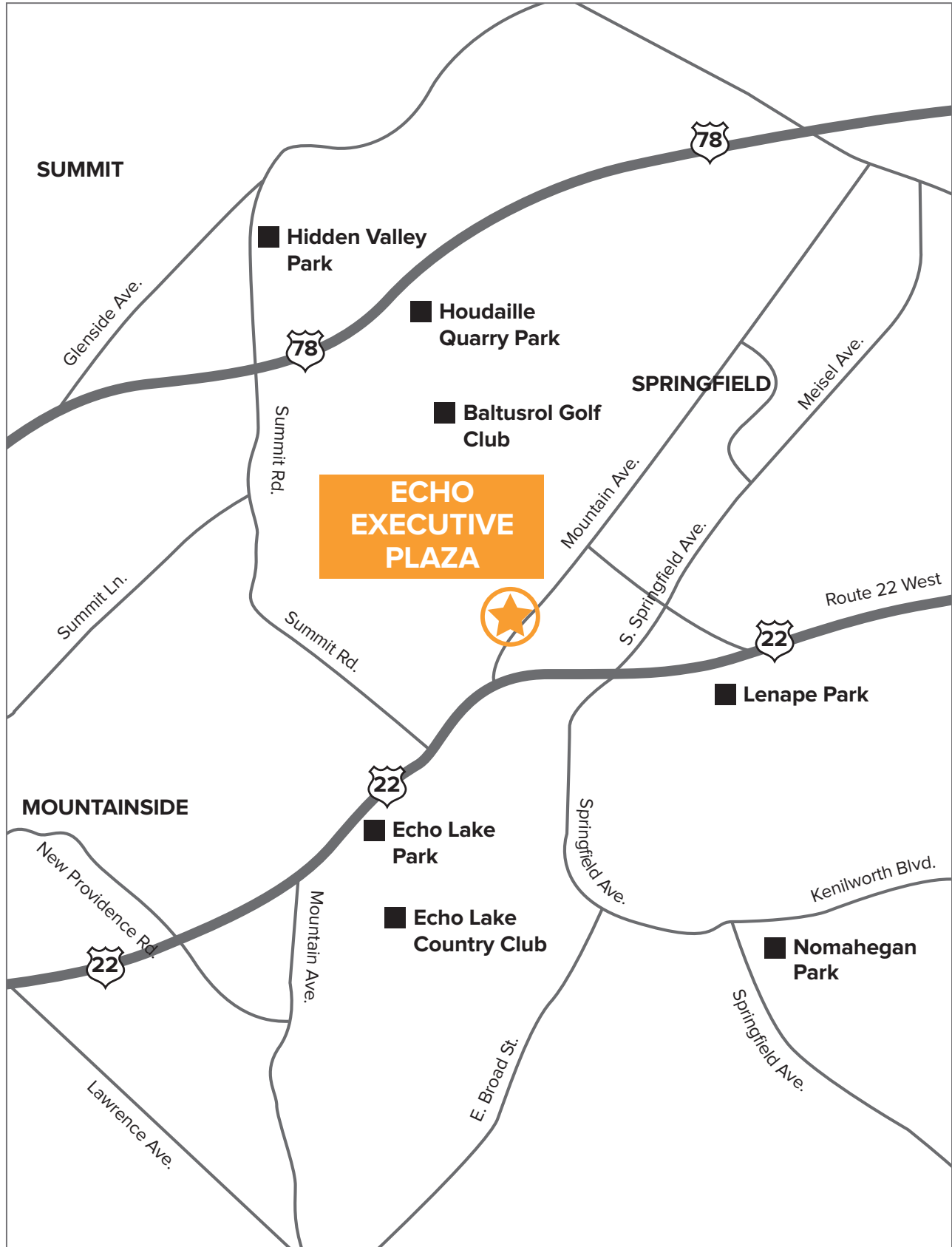
ECHO EXECUTIVE PLAZA

899 Mountain Avenue | Springfield | Union County | New Jersey



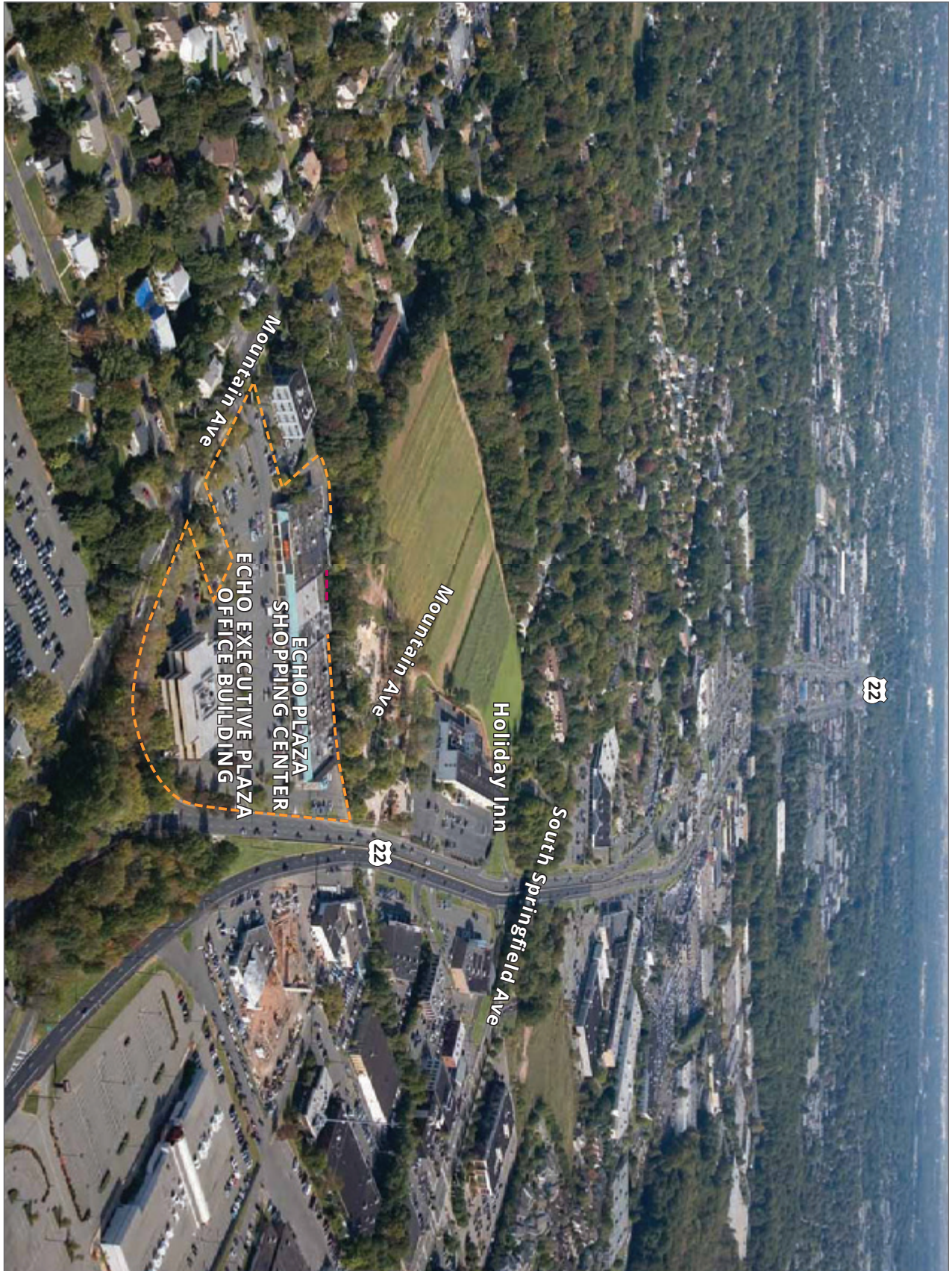
ECHO EXECUTIVE PLAZA

899 Mountain Avenue | Springfield | Union County | New Jersey



ECHO EXECUTIVE PLAZA

899 Mountain Avenue | Springfield | Union County | New Jersey



ECHO EXECUTIVE PLAZA

899 Mountain Avenue | Springfield | Union County | New Jersey



ECHO EXECUTIVE PLAZA

899 Mountain Avenue | Springfield | Union County | New Jersey

