

# Mixed-Use Warehouse Building

For Sale/Lease

8100 Colonel Glenn Road, Little Rock, AR

Colonel Glenn Road

## CONTACT US

**Clark Irwin, CCIM, SIOR**  
+1 501 978 6588  
clark.irwin@ar.colliers.com

**Drew Holbert, CCIM, SIOR**  
+1 501 850 0756  
drew.holbert@ar.colliers.com

Colliers | Arkansas  
1 Allied Drive | Suite 1500  
Little Rock, AR 72202  
P: +1 501 372 6161

**Colliers**

# Property features

## Flex Space for Sale/Lease

- Lot size: 2.08 acres
- Total building size: 24,895 SF
- Offering price: \$1,120,000
- Lease rate: contact broker
- Ceiling height: 14' - 18'
- Fully gated property
- Majority of western warehouse space is climate controlled
- Shipping/loading dock

## Area Demographics



### Estimated Population (2025)

1 Mile	3 Mile	5 Mile
6,380	53,024	151,009



### Estimated Households (2025)

1 Mile	3 Mile	5 Mile
2,491	22,012	65,072



### Est. Avg Household Income (2025)

1 Mile	3 Mile	5 Mile
\$67,923	\$65,046	\$91,098



## CONTACT US

**Clark Irwin, CCIM, SIOR**  
+1 501 978 6588  
clark.irwin@ar.colliers.com

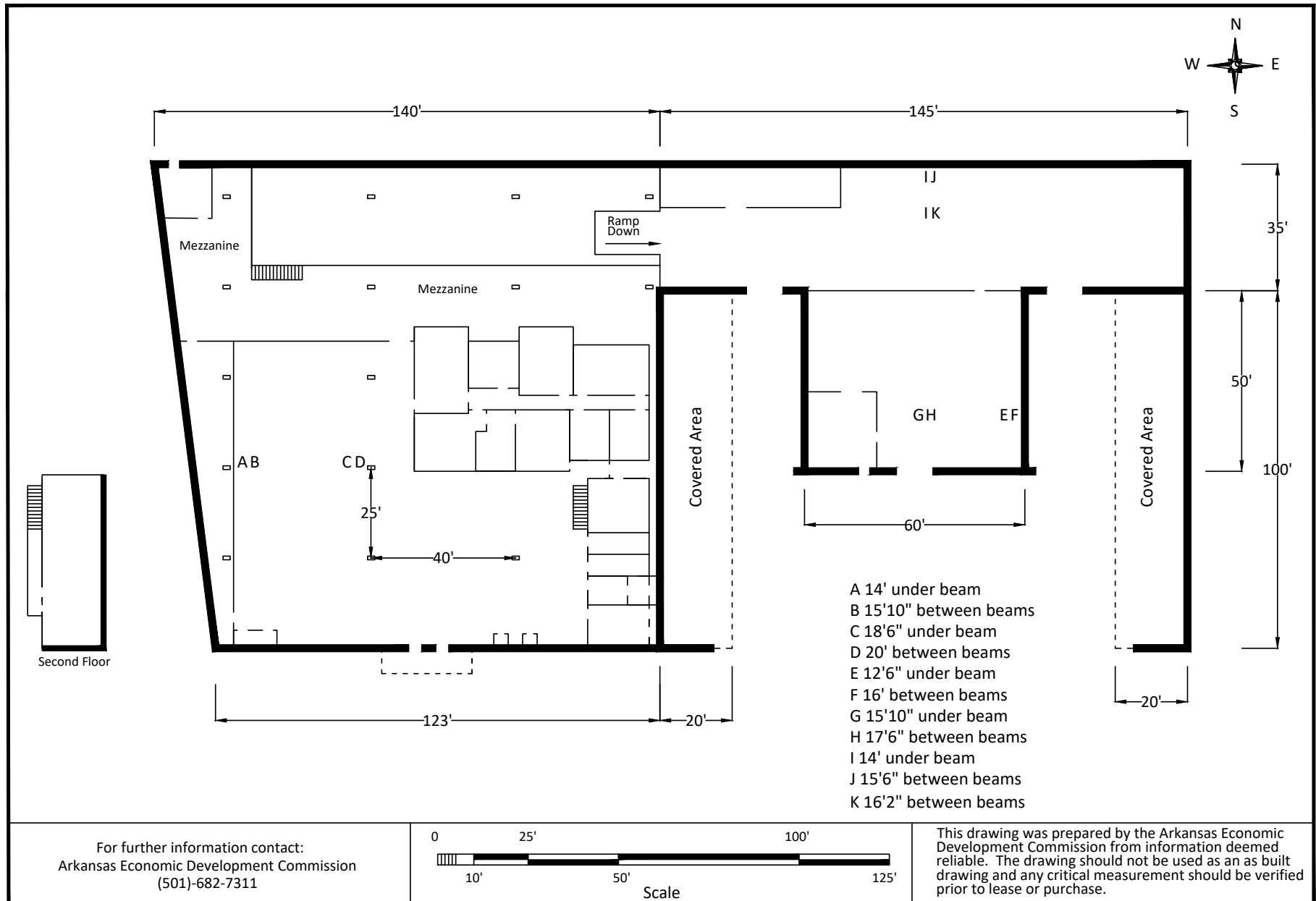
**Drew Holbert, CCIM, SIOR**  
+1 501 850 0756  
drew.holbert@ar.colliers.com

**Colliers | Arkansas**  
1 Allied Drive, Suite 1500  
Little Rock, AR 72202  
P: +1 501 372 6161  
F: +1 501 372 0671

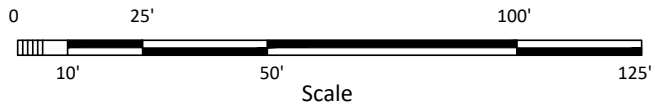
# Property aerial



# Floor plan



For further information contact:  
 Arkansas Economic Development Commission  
 (501)-682-7311



This drawing was prepared by the Arkansas Economic Development Commission from information deemed reliable. The drawing should not be used as an as built drawing and any critical measurement should be verified prior to lease or purchase.

# Mixed-Use Warehouse Building

8100 COLONEL GLENN ROAD, LITTLE ROCK, AR



## Contact us:

**Clark Irwin, CCIM, SIOR**  
+1 501 978 6588  
clark.irwin@ar.colliers.com

**Drew Holbert, CCIM, SIOR**  
+1 501 850 0756  
drew.holbert@ar.colliers.com

This document has been prepared by Colliers International for advertising and general information only. Colliers International makes no guarantees, representations or warranties of any kind, expressed or implied, regarding the information including, but not limited to, warranties of content, accuracy and reliability. Any interested party should undertake their own inquiries as to the accuracy of the information. Colliers International excludes unequivocally all inferred or implied terms, conditions and warranties arising out of this document and excludes all liability for loss and damages arising there from. This publication is the copyrighted property of Colliers International and/or its licensor(s). ©2021. All rights reserved.

**Colliers | Arkansas**  
1 Allied Drive | Suite 1500  
Little Rock, AR 72202  
P: +1 501 372 6161

