

2701 S SATURN WAY

BOISE, ID 83709

Industrial Building and Yard for
Sublease



PROPERTY INFORMATION

Submarket: Southwest

Available: April 2025

Bldg. Type: Industrial

Bldg. Size: 5,000 SF

Warehouse 2,674 SF

Office 2,326 SF

Covered Storage 1,000 SF

Yard Area 32,000 SF

Clear Height : 14' – 18'

Grade Doors: Yes

Zoning: M-1D

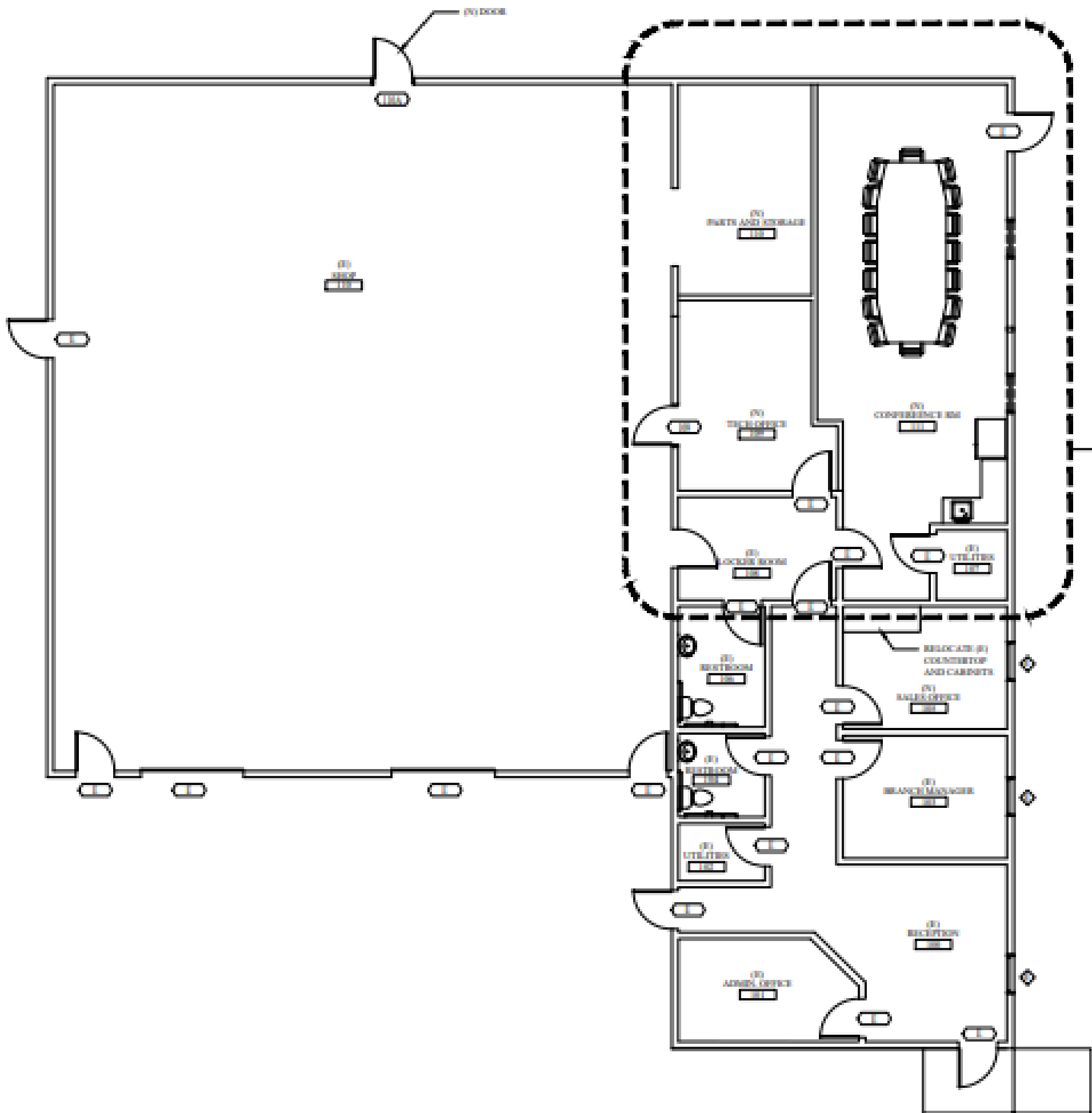
Parking: Ample

Lease Type: NNN

Lease Rate: \$1.35/SF

Expiration: 04/30/27

FLOOR PLAN



OVERALL NEW FLOOR PLAN



LISTING COMMENTS



Central Boise location.

Easy access to major thoroughfares.

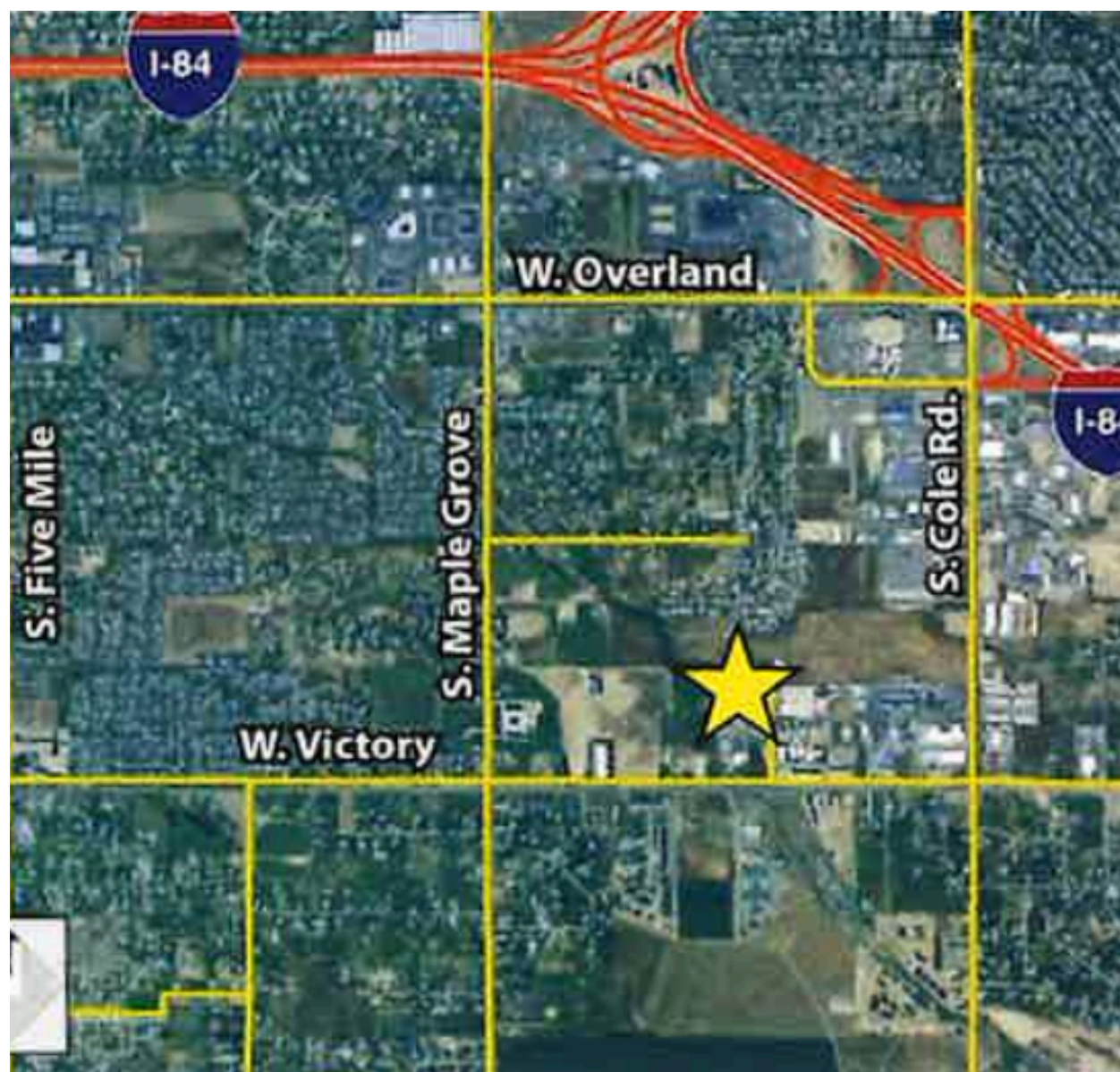
Close to restaurants and services.

Private office spaces.

Sublease through April 2027

Direct lease possible

Contact Agent for showing



Greg Gaddis | Principal | CCIM | SIOR

Tenant Realty Advisors
950 W. Bannock St, Ste 400, Boise,
ID 83702
208-869-9294
greg@tenantrealtyadvisors.com

—

Joshua Waitman

Tenant Realty Advisors
950 W. Bannock St, Ste 400,
Boise, ID 83702
(405) 830-4331
joshua@tenantrealtyadvisors.com