

11900 - 11950 FARMINGTON  
LIVONIA, MICHIGAN

HI-TECH FOR LEASE  
2,350 – 4,850 Square Feet Available



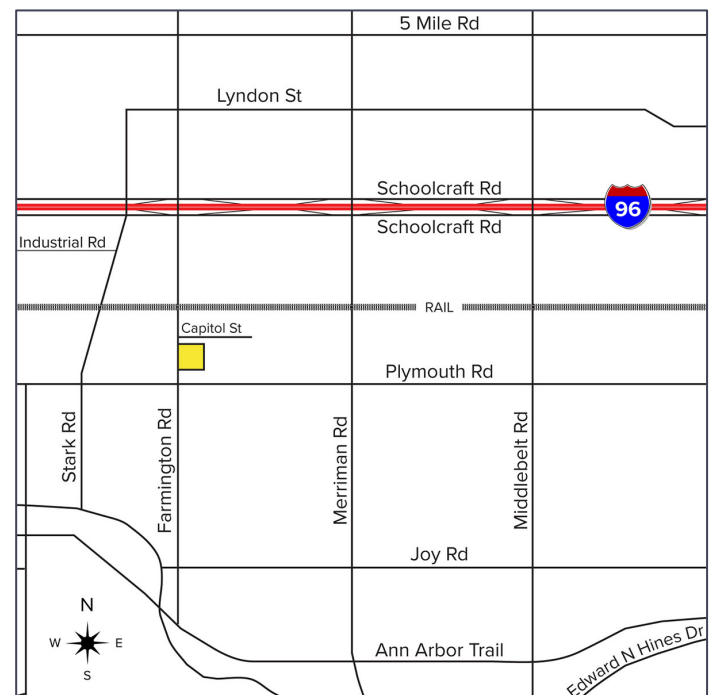
**SIGNATURE  
ASSOCIATES**  
KNOW SIGNATURE | KNOW RESULTS

## LIVONIA CORPORATE CENTER



### PROPERTY FEATURES

- 2,350 – 4,850 square foot suite available
- Floor plan shows proposed layout; can be modified to suit
- Complex professionally managed by Signature Associates
- Located just north of Plymouth Road with easy access to I-96 & I-275
- Multiple office/shop configurations available
- Aggressive lease rates



For more information, please contact:

**JASON STOUGH**  
(248) 948 4180  
jstough@signatureassociates.com

**CHRISTOPHER M. D'ANGELO**  
(248) 948 0109  
cdangelo@signatureassociates.com

**SIGNATURE ASSOCIATES**  
One Towne Square, Suite 1200  
Southfield, MI 48076  
www.signatureassociates.com

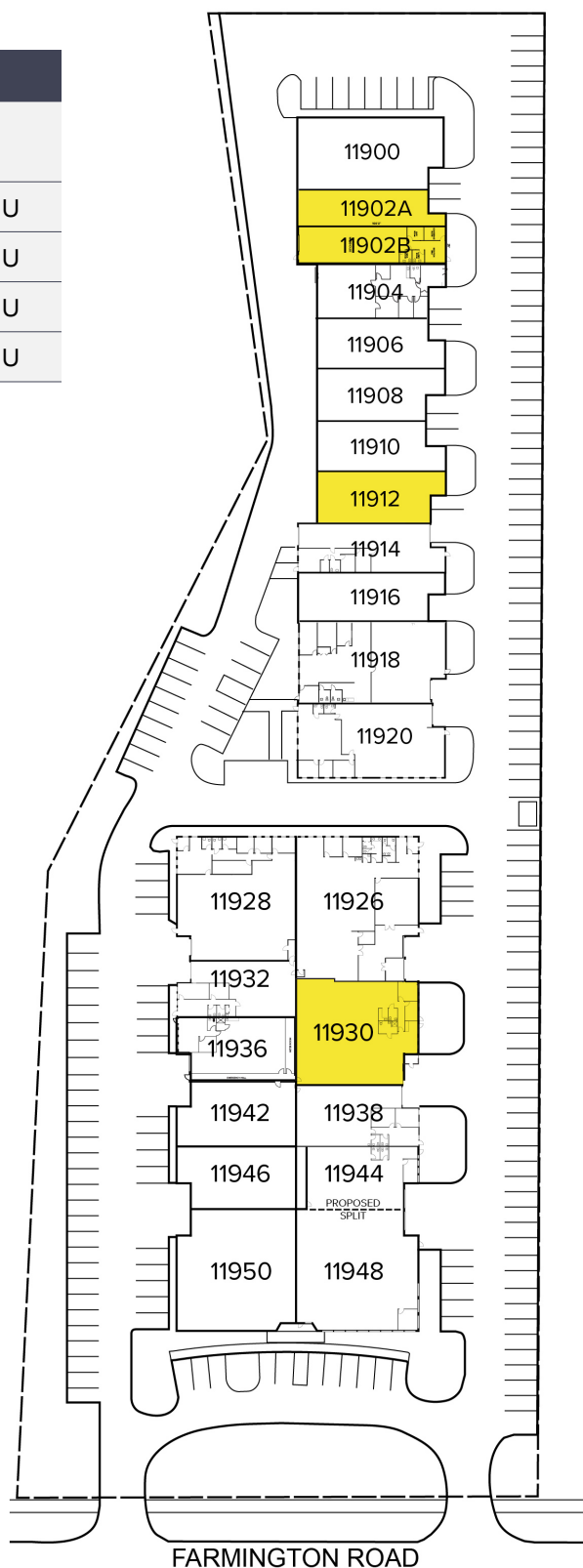
# 11900 - 11950 Farmington Road - Livonia, Michigan

## Hi-Tech For Lease

2,350 - 4,850  
Square Feet  
AVAILABLE

### Site Plan

AVAILABILITY				
UNIT	TOTAL SF	OFFICE SF	DATE	RATE
11902A	2,350	940	Immediately	\$11.29 G + U
11902B	2,500	2,000	Immediately	\$11.29 G + U
11912	2,550	1,275	Immediately	\$11.29 G + U
11930	4,680	250	07/01/25	\$11.29 G + U



For more information, please contact:

**JASON STOUGH**

(248) 948 4180

jstough@signatureassociates.com

**CHRISTOPHER M. D'ANGELO**

(248) 948 0109

cdangelo@signatureassociates.com

**SIGNATURE ASSOCIATES**

One Towne Square, Suite 1200

Southfield, MI 48076

www.signatureassociates.com

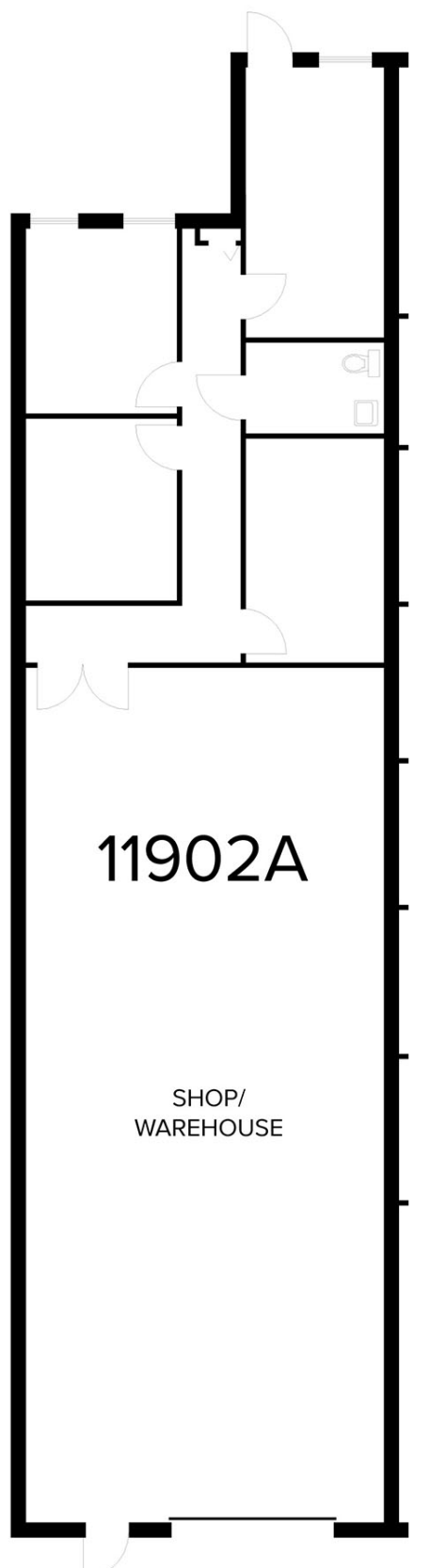
# 11900 - 11950 Farmington Road - Livonia, Michigan

## Hi-Tech For Lease

2,350 - 4,850  
Square Feet  
AVAILABLE

Floor Plan

**Suite 11902A - 2,350 Square Feet**



For more information, please contact:

**JASON STOUGH**

(248) 948 4180

[jstough@signatureassociates.com](mailto:jstough@signatureassociates.com)

**CHRISTOPHER M. D'ANGELO**

(248) 948 0109

[cdangelo@signatureassociates.com](mailto:cdangelo@signatureassociates.com)

**SIGNATURE ASSOCIATES**

One Towne Square, Suite 1200

Southfield, MI 48076

[www.signatureassociates.com](http://www.signatureassociates.com)

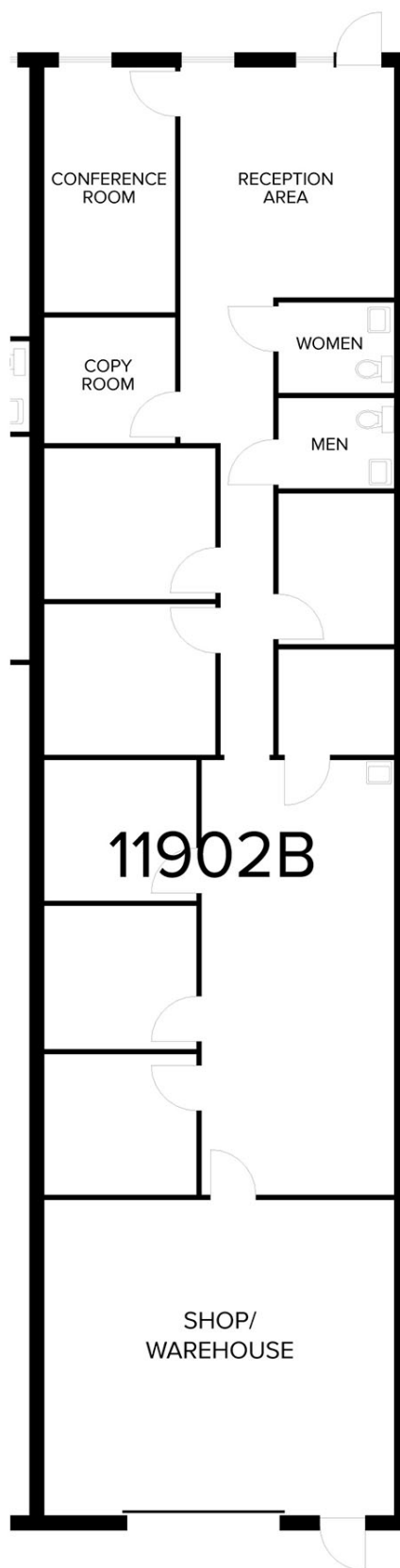
# 11900 - 11950 Farmington Road - Livonia, Michigan

## Hi-Tech For Lease

2,350 - 4,850  
Square Feet  
AVAILABLE

Floor Plan

**Suite 11902B - 2,500 Square Feet**



For more information, please contact:

**JASON STOUGH**

(248) 948 4180

[jstough@signatureassociates.com](mailto:jstough@signatureassociates.com)

**CHRISTOPHER M. D'ANGELO**

(248) 948 0109

[cdangelo@signatureassociates.com](mailto:cdangelo@signatureassociates.com)

**SIGNATURE ASSOCIATES**

One Towne Square, Suite 1200

Southfield, MI 48076

[www.signatureassociates.com](http://www.signatureassociates.com)

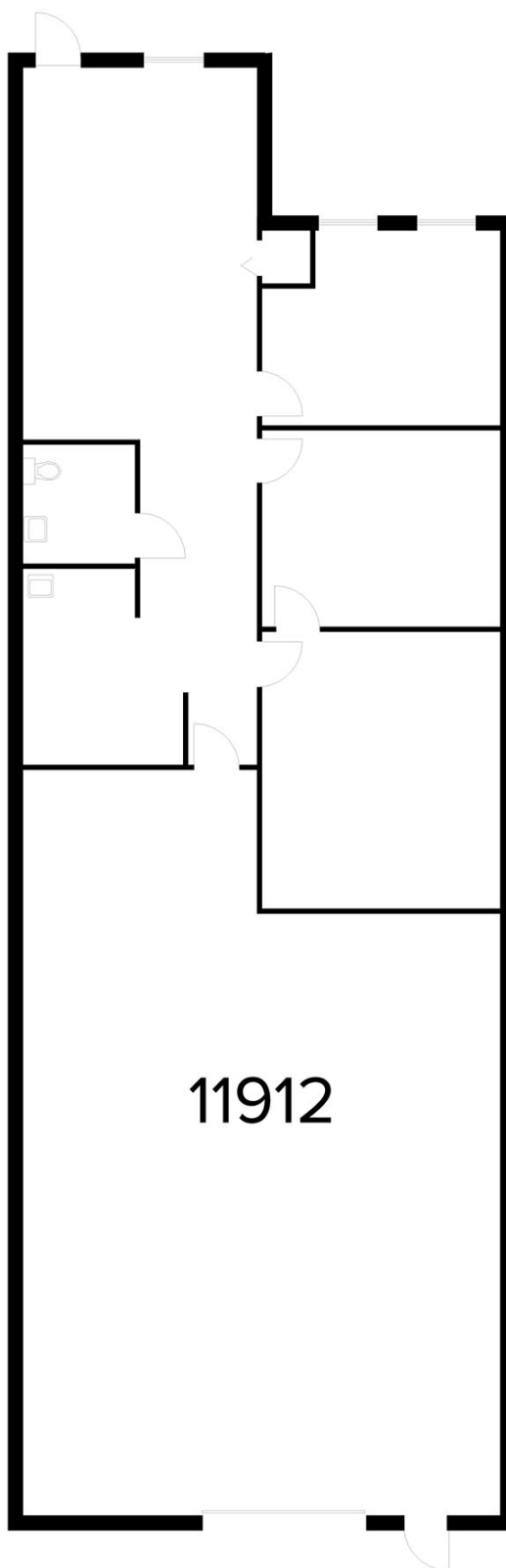
# 11900 - 11950 Farmington Road - Livonia, Michigan

## Hi-Tech For Lease

2,350 - 4,850  
Square Feet  
AVAILABLE

Floor Plan

**Suite 11912 - 2,550 Square Feet**



For more information, please contact:

**JASON STOUGH**

(248) 948 4180

[jstough@signatureassociates.com](mailto:jstough@signatureassociates.com)

**CHRISTOPHER M. D'ANGELO**

(248) 948 0109

[cdangelo@signatureassociates.com](mailto:cdangelo@signatureassociates.com)

**SIGNATURE ASSOCIATES**

One Towne Square, Suite 1200

Southfield, MI 48076

[www.signatureassociates.com](http://www.signatureassociates.com)

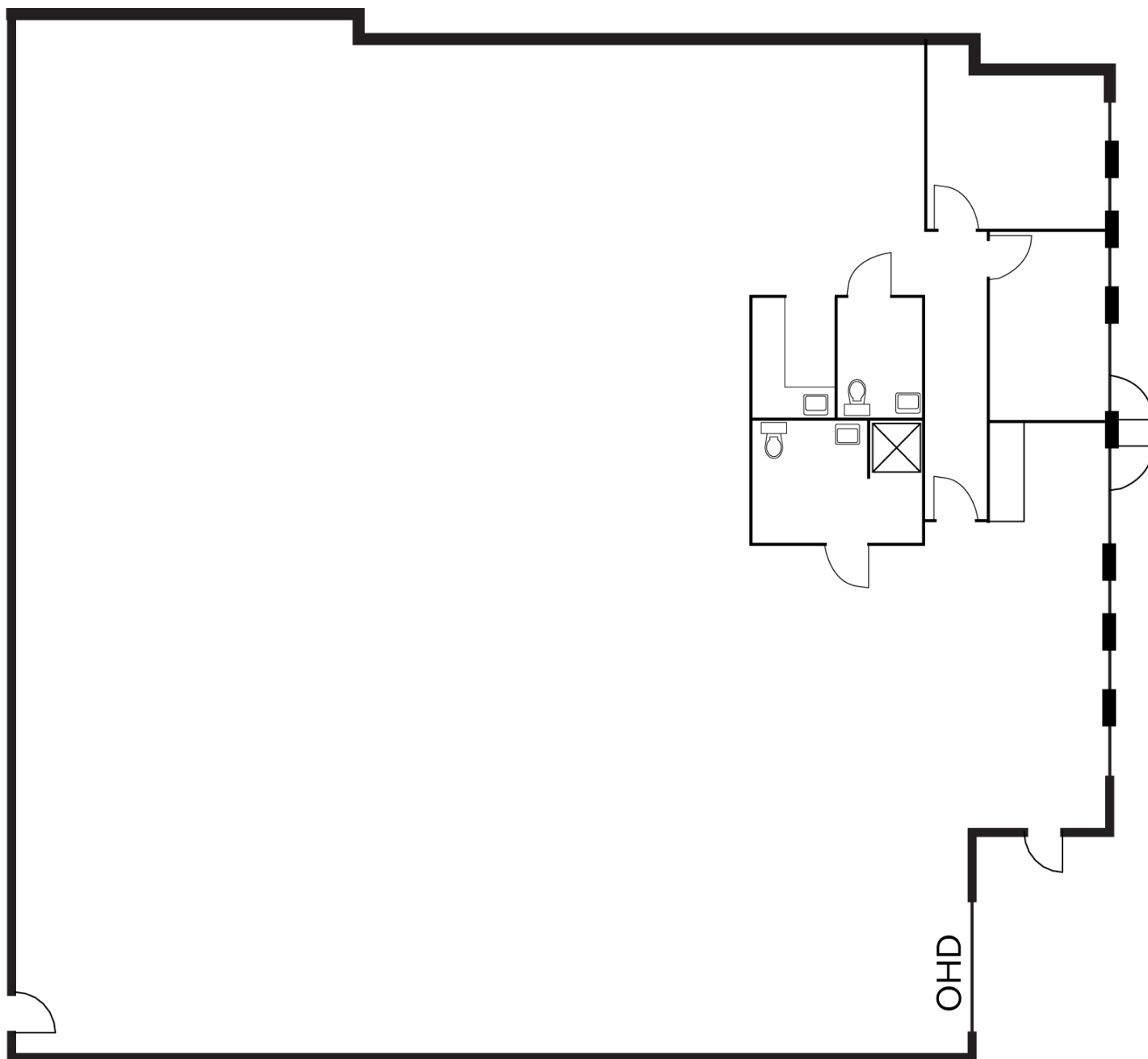
# 11900 - 11950 Farmington Road - Livonia, Michigan

## Hi-Tech For Lease

2,350 - 4,850  
Square Feet  
AVAILABLE

Floor Plan

**Suite 11930 - 4,680 Square Feet**



For more information, please contact:

**JASON STOUGH**

(248) 948 4180

[jstough@signatureassociates.com](mailto:jstough@signatureassociates.com)

**CHRISTOPHER M. D'ANGELO**

(248) 948 0109

[cdangelo@signatureassociates.com](mailto:cdangelo@signatureassociates.com)

**SIGNATURE ASSOCIATES**

One Towne Square, Suite 1200

Southfield, MI 48076

[www.signatureassociates.com](http://www.signatureassociates.com)