

PRIME M1 ZONED COMMERCIAL LOT

\$42 per square foot in the Maui Business Park



98 LAU'O

PROPERTY HIGHLIGHTS

- Adjacent to Costco Wholesale & Costco Gas
- Plans are available to purchase at an additional cost
- Three story design (high cube warehouse)
- Industrial/flex building for warehousing, office and restaurant space
- Lowest priced lot in the Maui Business Park, Phase 2
- SMA and building permits approved.

PROPERTY DESCRIPTION

Opportunity to purchase a vacant commercial lot next to Costco Wholesale and Costco Gas, within the Maui Business Park Phase 2 North Project. Plans and permits in place, ready to build industrial/flex complex.

OFFERING SUMMARY

Sale Price:	\$4,154,850
Lot Size:	2.271 Acres / 98,925 SF
Per SF:	\$42.00
Address:	98 Lau'o Loop Kahului, HI 96732
TMK:	(2) 3-8-103-002:0000
Zoning:	M-1 (light industrial)

GREG SHEEHAN, R(B) **SCOTT KENAR, R(S)**

Principal Broker
808.250.0900
gsheehan@mauibiz.com

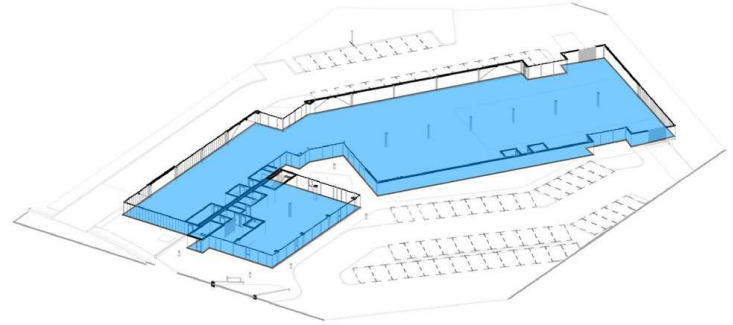
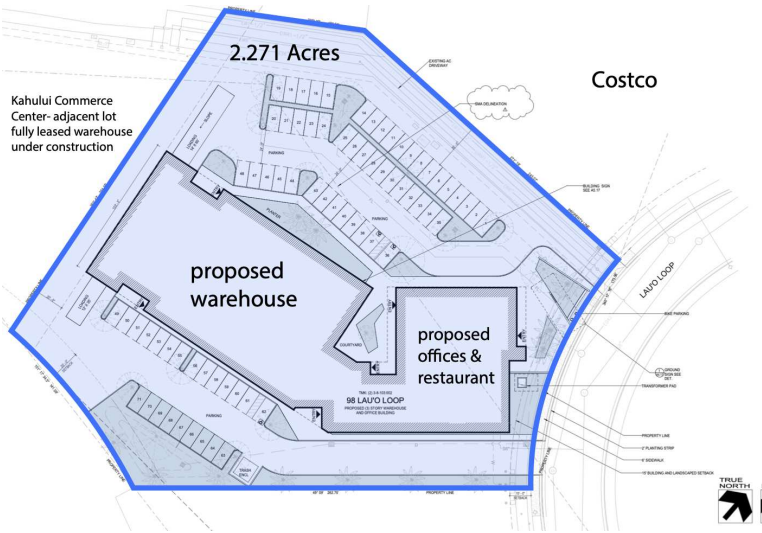
Sales & Leasing
808.250.2291
skenar@mauibiz.com



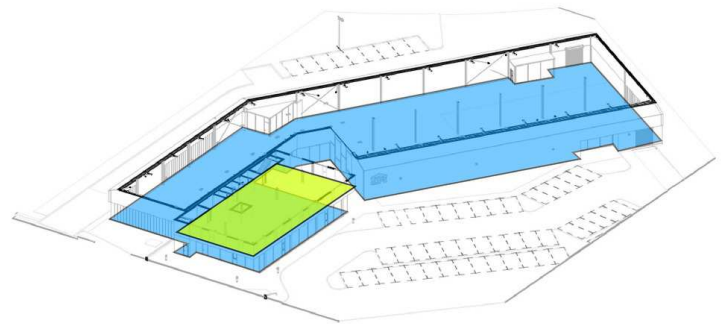
COMMERCIAL PROPERTIES
OF MAUI

PRIME M1 ZONED COMMERCIAL LOT

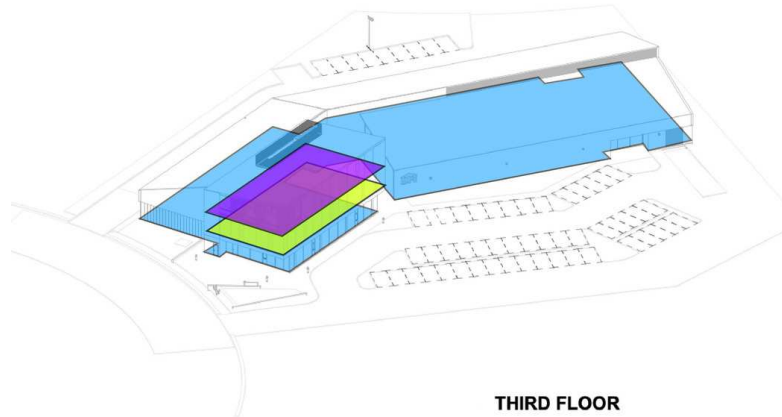
\$42 per square foot in the Maui Business Park



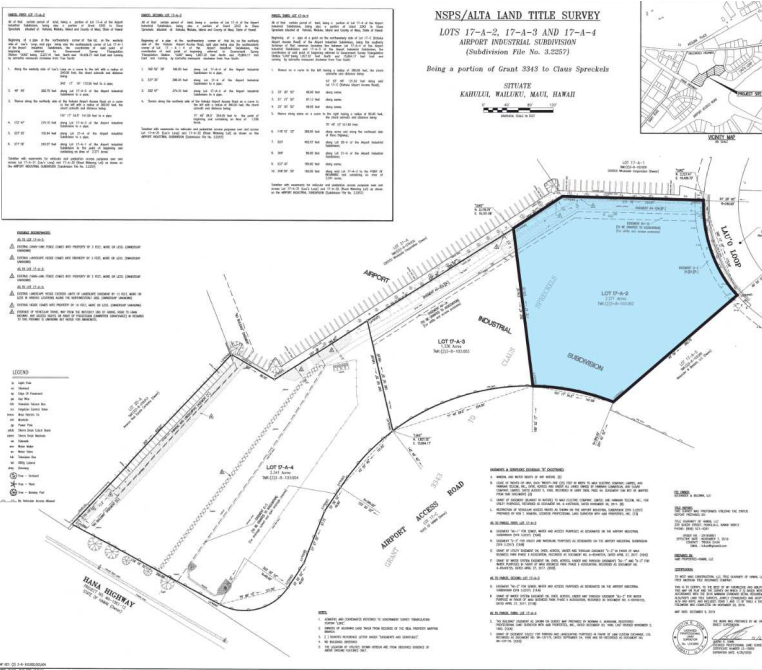
FIRST FLOOR



SECOND FLOOR



THIRD FLOOR



GREG SHEEHAN, R(B) SCOTT KENAR, R(S)

Principal Broker
808.250.0900
gsheehan@mauibiz.com

Sales & Leasing
808.250.2291
skenar@mauibiz.com



PRIME M1 ZONED COMMERCIAL LOT

\$42 per square foot in the Maui Business Park



Map data ©2024 Imagery ©2024 Airbus, CNES / Airbus, Maxar Technologies

GREG SHEEHAN, R(B) SCOTT KENAR, R(S)

Principal Broker
808.250.0900
gsheehan@mauibiz.com

Sales & Leasing
808.250.2291
skenar@mauibiz.com

