

FOR LEASE

2,517 RSF Available

2140 Edgewood Drive East, Lakeland FL 33803



 FranklinStreet

FSOI, LLC | A Licensed Florida Broker # CQ1048040

KATHERINE SCATUORCHIO | Director
Katherine.Scatuorchio@FranklinSt.com | 407.458.5412

PROPERTY SUMMARY

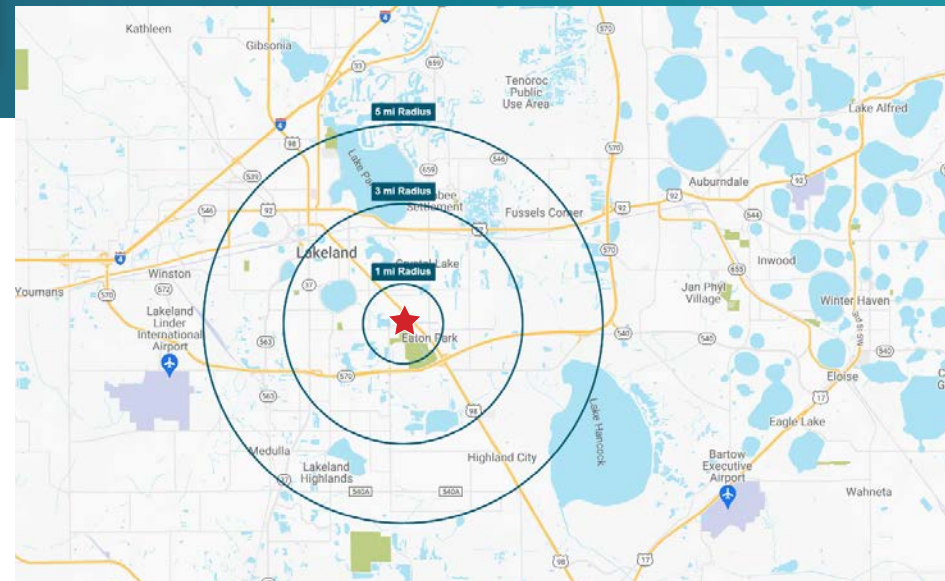


PROPERTY HIGHLIGHTS

- 2,517 RSF Medical/Office
- End-cap suite
- Central Lakeland location with easy access to major thoroughfares
- Available Immediately!
- Abundant parking in surface parking lot
- Monument Signage Available
- \$25.00/RSF NNN

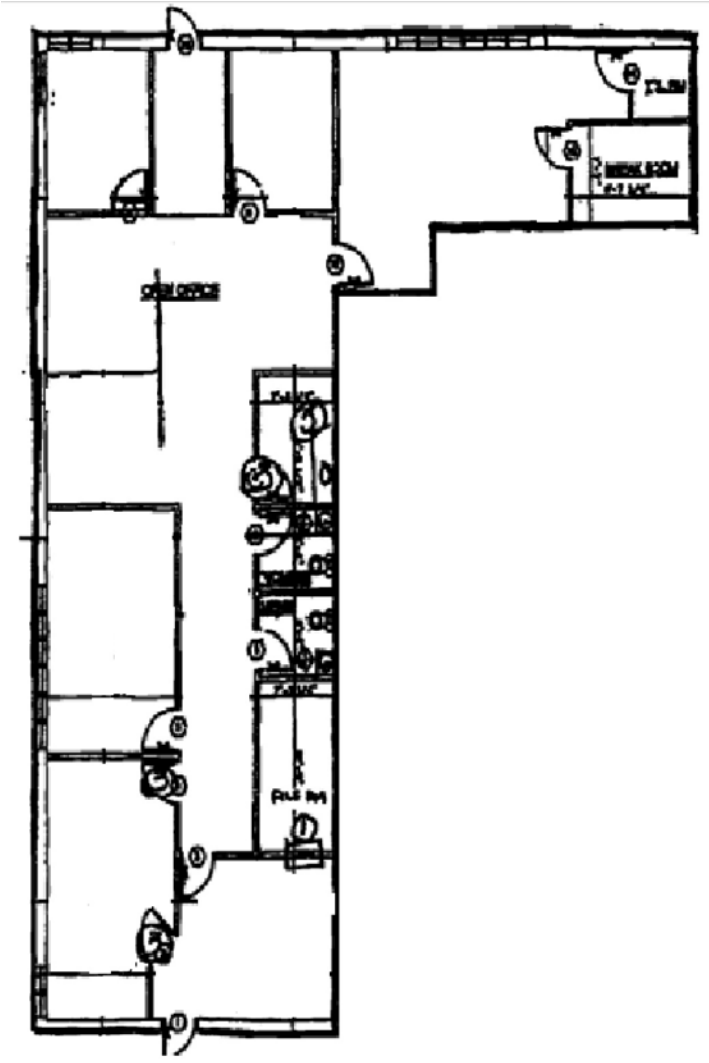
AREA DEMOGRAPHICS

	1 MILE	3 MILE	5 MILE
Population	7,706	60,183	137,355
Total Households	3,118	23,726	53,252
Average Income	\$60,472	\$69,648	\$71,535
Median Age	37.8	37.7	38.9
Daytime Population	7,665	32,151	68,239



FLOOR PLAN

2,517 RSF AVAILABLE



INTERIOR



AREA OVERVIEW



CONTACT

KATHERINE SCATUORCHIO

Director

407.458.5412

Katherine.Scatuorchio@FranklinSt.com



20 N Orange Avenue | Suite 610

Orlando, FL 32801

407.458.5400

FSOI, LLC | A Licensed Florida Broker # CQ1048040

No warranty or representation, expressed or implied, is made to the accuracy of information contained herein, and same is submitted subject to errors, change of price, rental or other conditions, withdrawal without notice, and to any special listing conditions imposed by our principals.

2140 EDGEWOOD DRIVE, LAKELAND, FL 33803