

FOR LEASE

2111 US HIGHWAY 411 NE

CARTERSVILLE, GA 30121

55,700 SF | ±7.85 ACRES



±1.0 MILE TO
INTERSTATE 75
VIA EXIT 293

411

BILLY SNOWDEN, SIOR

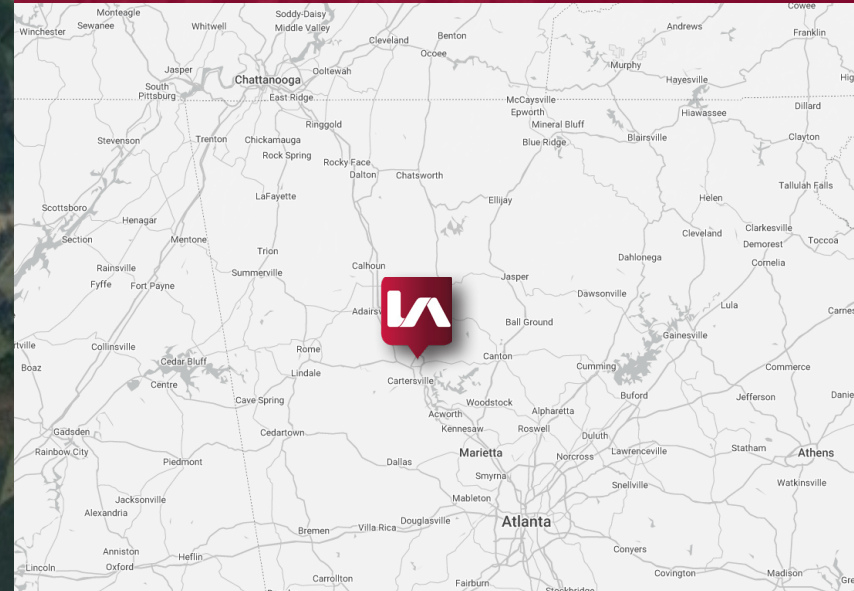
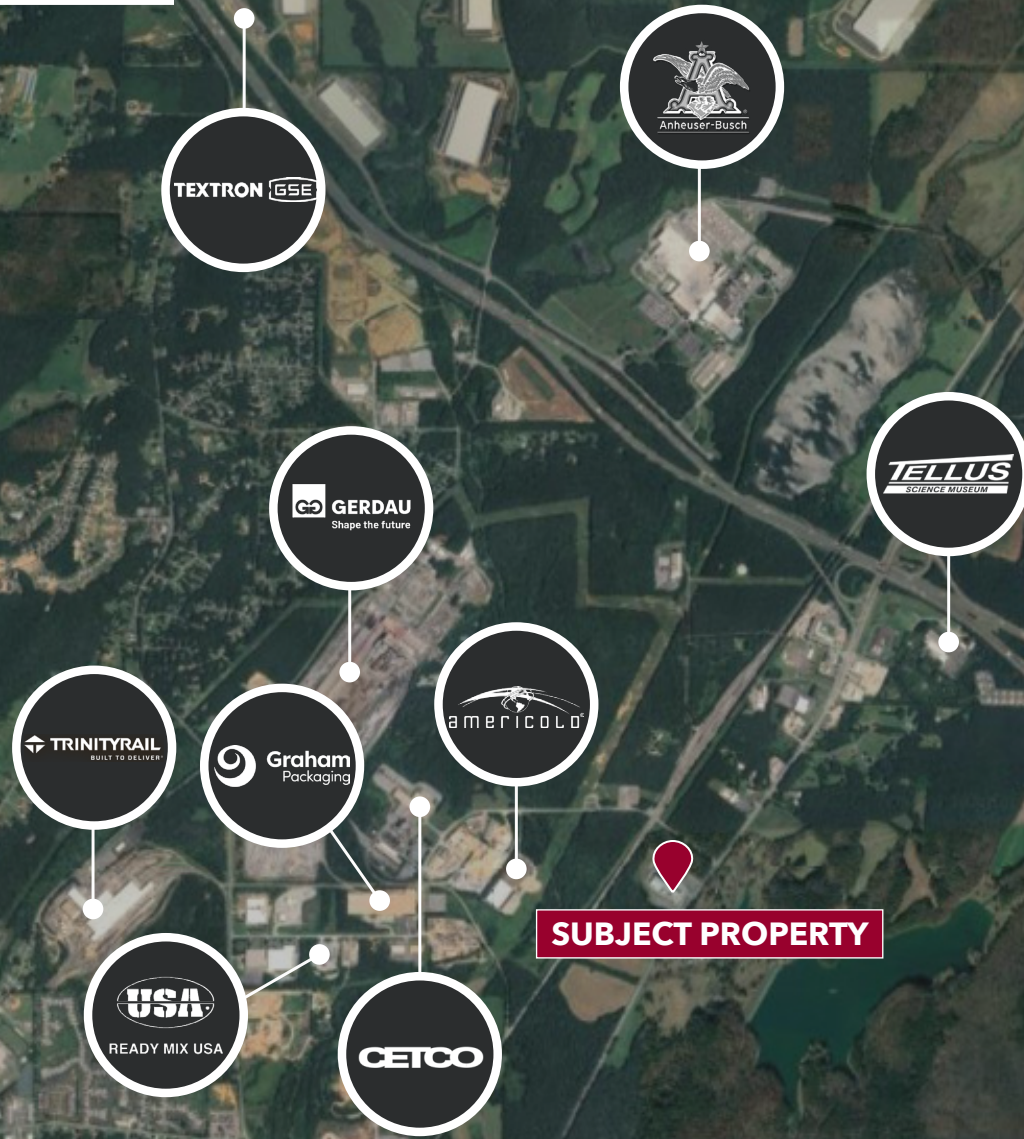
Executive VP / Principal
bsnowden@lee-associates.com
O: 404.442.2839
C: 770.354.5981

WILLIE CANDLER

Director
wcandler@lee-associates.com
O: 404.442.2802
C: 770.881.1368

 **LEE &
ASSOCIATES**
COMMERCIAL REAL ESTATE SERVICES

LOCATION OVERVIEW



DISTANCES

- Interstate 75
(1 Mile Exit 293)
- Interstate 285
(36.3 Miles)
- Chattanooga
(72.3 Miles)



LOGISTICS

- Appalachian Regional Port
(50.6 Miles)
- Austell Intermodal
(37.5 Miles)
- ATL International Airport
(57.5 Miles)
- Port of Savannah
(296 Miles)



TRUCK COUNTS

Interstate 75
22,152 avg. trucks per day



NEW MANUFACTURERS

- QCells
2,500 new jobs
- SK Battery
3,500 new jobs

PROPERTY HIGHLIGHTS

55,700 SF
TOTAL SQUARE FOOTAGE

WAREHOUSE FACILITY

OFFICE SPACE

TRUCK REPAIR FACILITY

BREAK ROOM / TRAINING ROOM

25,800 SF
WAREHOUSE FACILITY

6,400 SF
OFFICE SPACE

2,500 SF
BREAK ROOM / TRAINING ROOM

21,000 SF
TRUCK REPAIR FACILITY

PROPERTY SUMMARY

BUILDING SIZE

55,700 SF (total)

ACREAGE

±7.85 total
±6.5 outside storage

TRUCK REPAIR FACILITY

21,000 SF

WAREHOUSE

25,800 SF

OFFICE

6,400 SF (2 stories)

TRAINING FACILITY

2,500 SF

CEILING HEIGHT

22' - 30' ceiling height

CRANES

Two (2) 2-ton bridge cranes

COMMENTS

±10 truck bays with drainage pits



[EXPLORE VIRTUALLY NOW](#)



PROPERTY IMAGES



CONTACT

BILLY SNOWDEN, SIOR

Executive VP / Principal

bsnowden@lee-associates.com

O: 404.442.2839

C: 770.354.5981

WILLIE CANDLER

Director

wcandler@lee-associates.com

O: 404.442.2802

C: 770.881.1368