

# Sherwood Storage Yard

25755 SW GRAHAMS FERRY RD, SHERWOOD, OR 97140



25755  
1.25 ACRES

Stu Peterson, SIOR  
503.972.7288  
stu@macadamforbes.com  
Licensed in OR & WA

2 Centerpointe Drive, Suite 500 | Lake Oswego, OR 97035 | WWW.MACADAMFORBES.COM | 503.227.2500

All of the information contained herein was obtained either from the owner or other parties we consider reliable. We have no reason to doubt its accuracy, however we do not guarantee it.

FOR LEASE

 **MACADAM  
FORBES**  
COMMERCIAL REAL ESTATE SERVICES

# FOR LEASE

25755 SW Grahams Ferry Rd, Sherwood, OR 97140



## PROPERTY DESCRIPTION

1.25 acres of gated, graveled, lighted, and fenced storage yard. The site includes a 900 SF storage building and single-phase power. The site is located five minutes from the North Wilsonville exit.

## OFFERING SUMMARY

Lease Rate:	\$4,900.00 per month (Gross)
Lot Size:	1.25 Acres
Storage Building:	900 SF



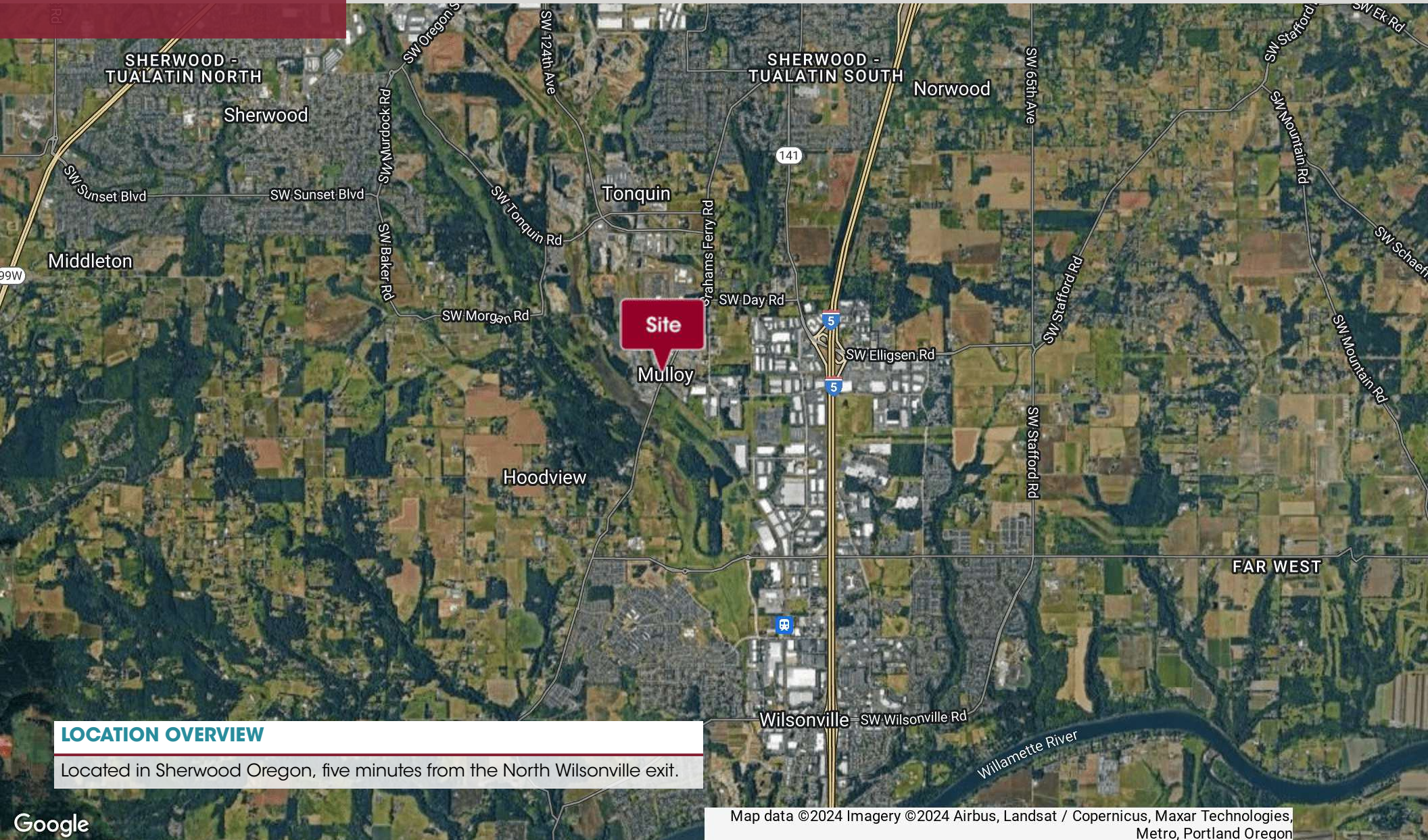
**Stu Peterson, SIOR**  
503.972.7288  
stu@macadamforbes.com  
Licensed in OR & WA

All of the information contained herein was obtained either from the owner or other parties we consider reliable. We have no reason to doubt its accuracy, however we do not guarantee it.

MACADAMFORBES.COM | 503.227.2500

# FOR LEASE

25755 SW Grahams Ferry Rd, Sherwood, OR 97140



## LOCATION OVERVIEW

Located in Sherwood Oregon, five minutes from the North Wilsonville exit.

Map data ©2024 Imagery ©2024 Airbus, Landsat / Copernicus, Maxar Technologies, Metro, Portland Oregon



**Stu Peterson, SIOR**  
503.972.7288  
stu@macadamforbes.com  
Licensed in OR & WA

All of the information contained herein was obtained either from the owner or other parties we consider reliable. We have no reason to doubt its accuracy, however we do not guarantee it.

MACADAMFORBES.COM | 503.227.2500