

6%

Co-operating
Broker Fee*

RenCorpRealty^{AD}




Centrally
Located


Renovated


Signage
Opportunities


**FREE
Parking**

**FREE PARKING
NOW LEASING**

RENTAL RATES

From \$12-16 RSF*
Full Service (Less Janitorial)

**Rental rate based on TI request
and length of term*

SPACE AVAILABLE

977 - 19,867 SF

THE HISTORIC HOLLEY MASON

157 S Howard St, Spokane WA

NEIGHBORHOOD

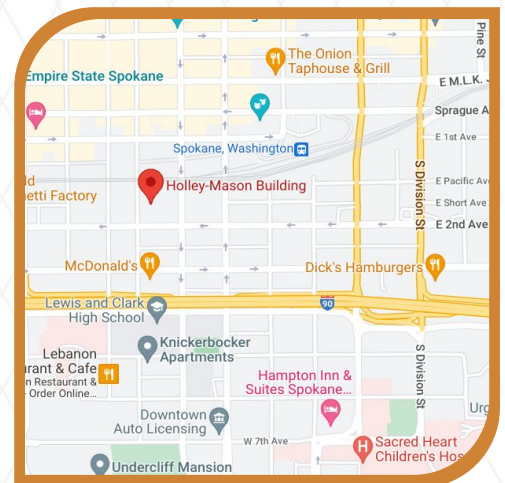
The Holley-Mason Building is an important Spokane landmark that is beautifully executed with Renaissance-inspired brick and terra cotta details.

AMENITIES

- ✓ FREE Onsite Parking
 - ⦿ 1:1000 SF (Additional space available at Market Rates)
- ✓ Secure Building
- ✓ High Speed Elevator
- ✓ Detailed Craftsmanship
- ✓ Centrally Located
- ✓ Signage Opportunities
- ✓ Creative Loft Style Offices
- ✓ TI Allowance Neg

Information is deemed reliable but not guaranteed. Broker not responsible for changes errors or commissions. All square footages are for conveniences only. All information should be verified prior to leasing or purchasing property.

*6% Co-operating Broker Fee is offered for a limited time and is based on marketed rates.



JUSTIN FOLKINS
509-991-8387

KYHRA STRAMPE
509-309-8444

CHRIS BATTEN
509-217-5508

info@rencorprealty.com
509-315-2998



Zona Blanca - 1st Floor

AVAILABLE SPACES

1ST FLOOR

- ✔ Suite 102 - 1,356 RSF

2ND FLOOR

- ✔ Full Floor Plate
- ✔ 19,867 RSF demisable to 4,600 RSF

3RD FLOOR

- ✔ Suite 302 & 303 - 4,355 RSF
- ✔ Demisable to 1,705 RSF
- ✔ Suite 304 - 977 RSF

4TH FLOOR

- ✔ Suite 406 - 3,454 RSF

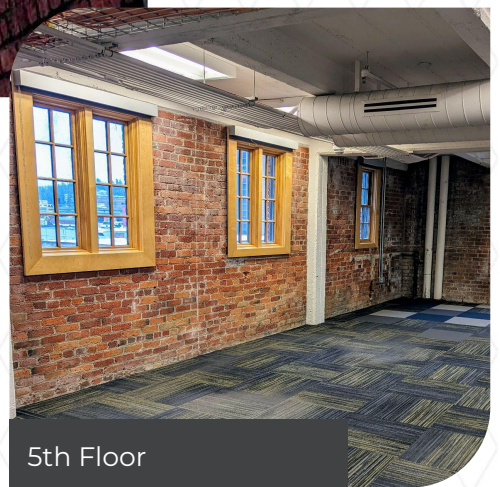
5TH FLOOR

- ✔ Full Floor Plate
- ✔ 18,860 RSF desmisible to 2,887 RSF

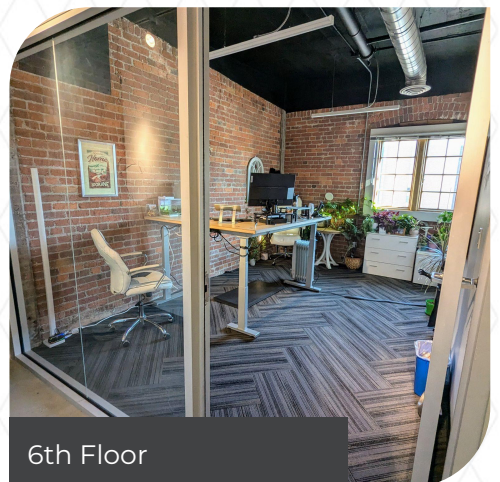
6TH FLOOR

- ✔ Suite 605 - 5,137 RSF
- ✔ Suite 606 - 2,554 RSF

Information is deemed reliable but not guaranteed. Broker not responsible for changes errors or commissions. All rentable square footages are estimates for conveniences only. All information should be verified prior to leasing or purchasing property.

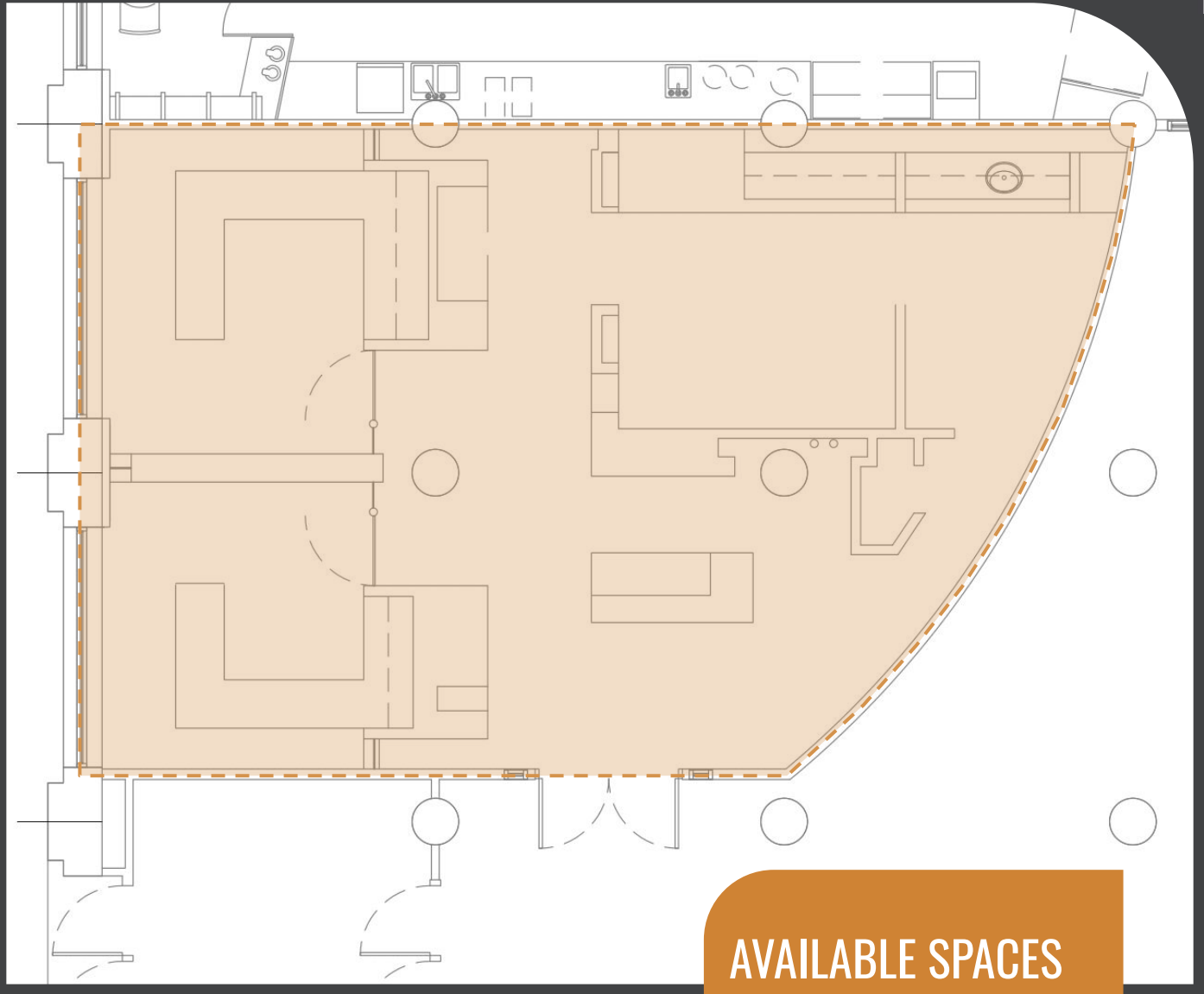


5th Floor



6th Floor

1ST FLOOR



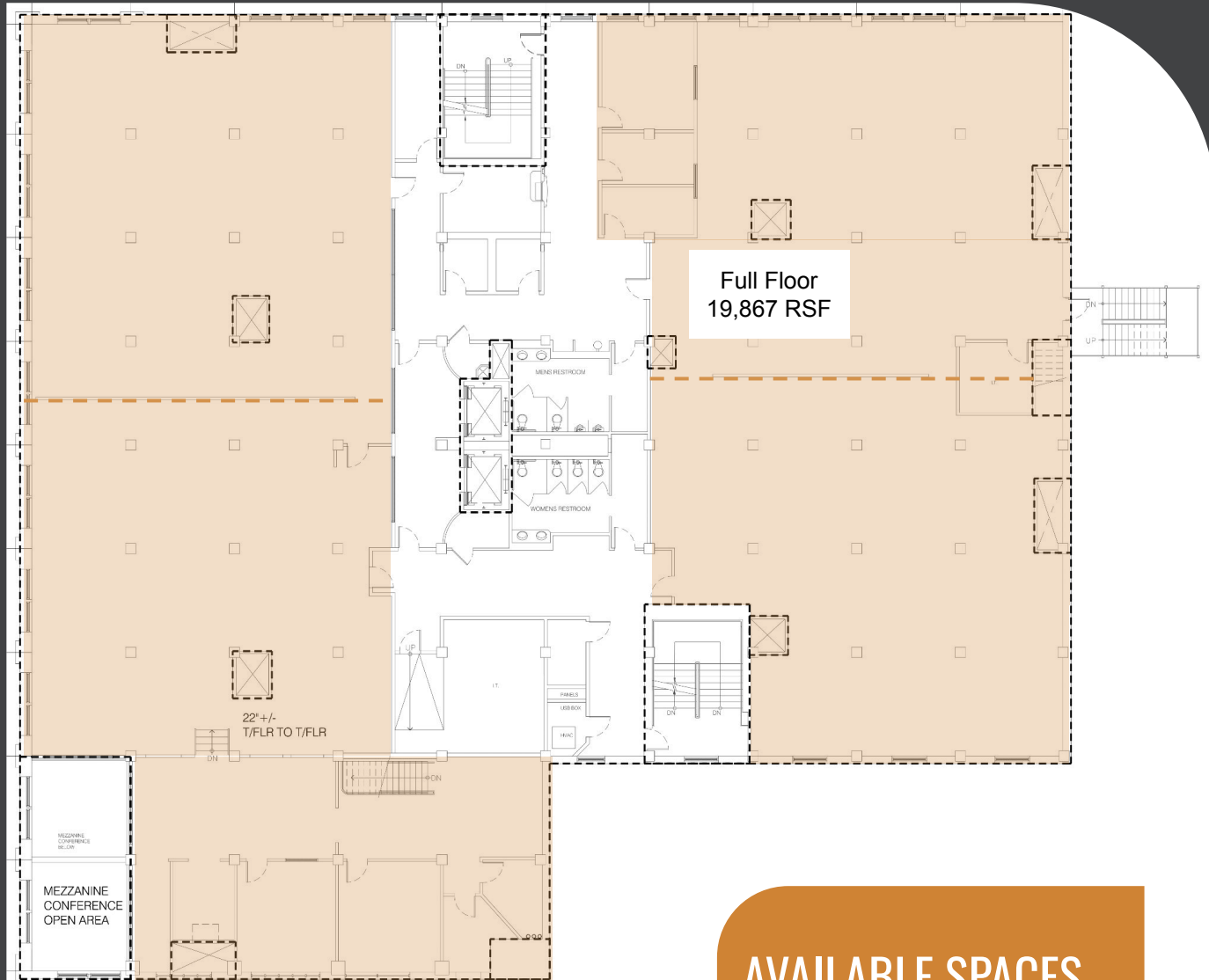
AVAILABLE SPACES

Suite 102 RSF

- 1,356 RSF
- 2 Offices
- Large Windows

Information is deemed reliable but not guaranteed. Broker not responsible for changes errors or commissions. All square footages are for conveniences only. All information should be verified prior to leasing or purchasing property.

2ND FLOOR



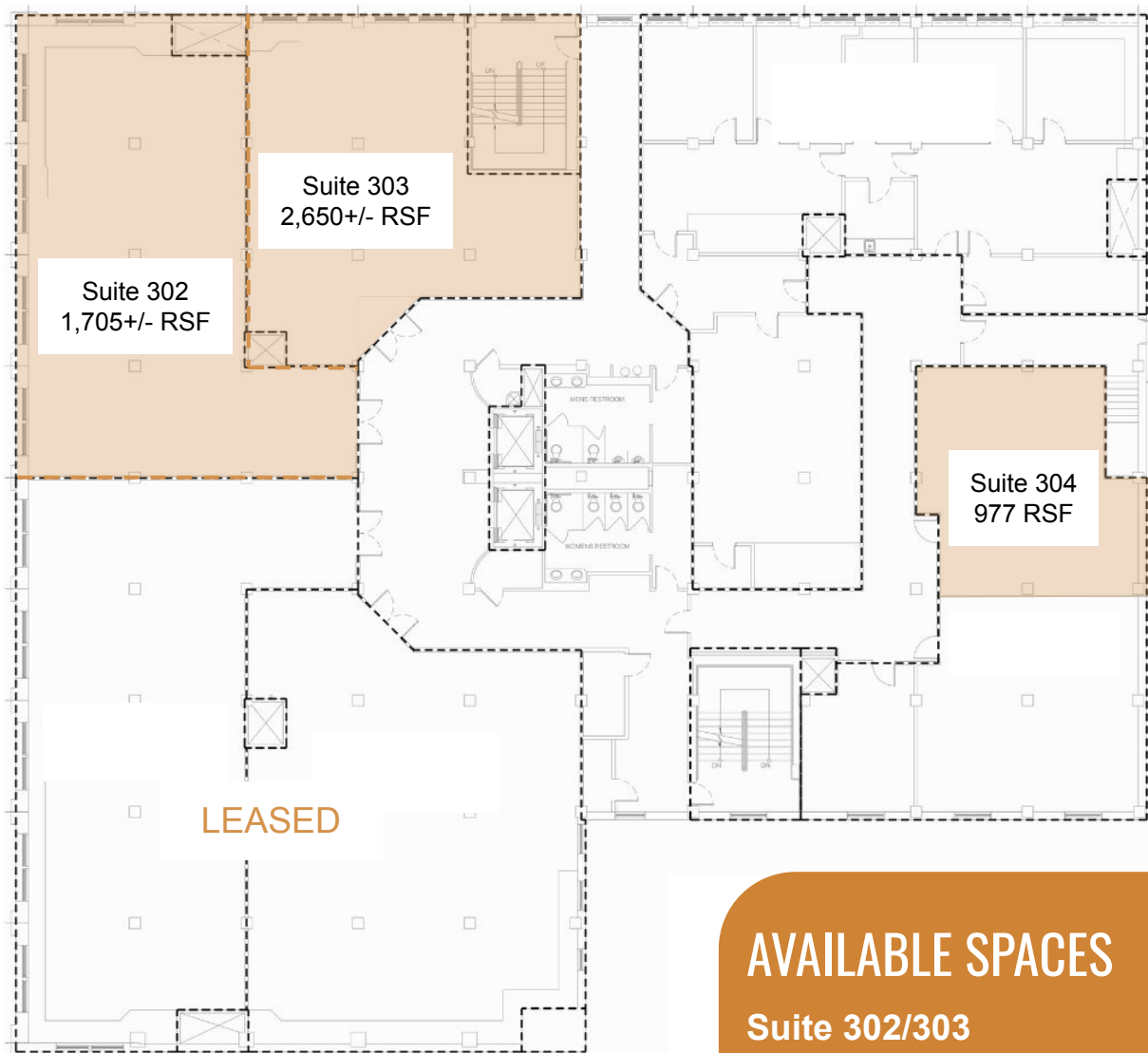
AVAILABLE SPACES

19,867 RSF

- Demisable to 4,600 RSF
- Full Floor Plate
- Large Windows

Information is deemed reliable but not guaranteed. Broker not responsible for changes errors or commissions. All square footages are for conveniences only. All information should be verified prior to leasing or purchasing property.

3RD FLOOR



AVAILABLE SPACES

Suite 302/303

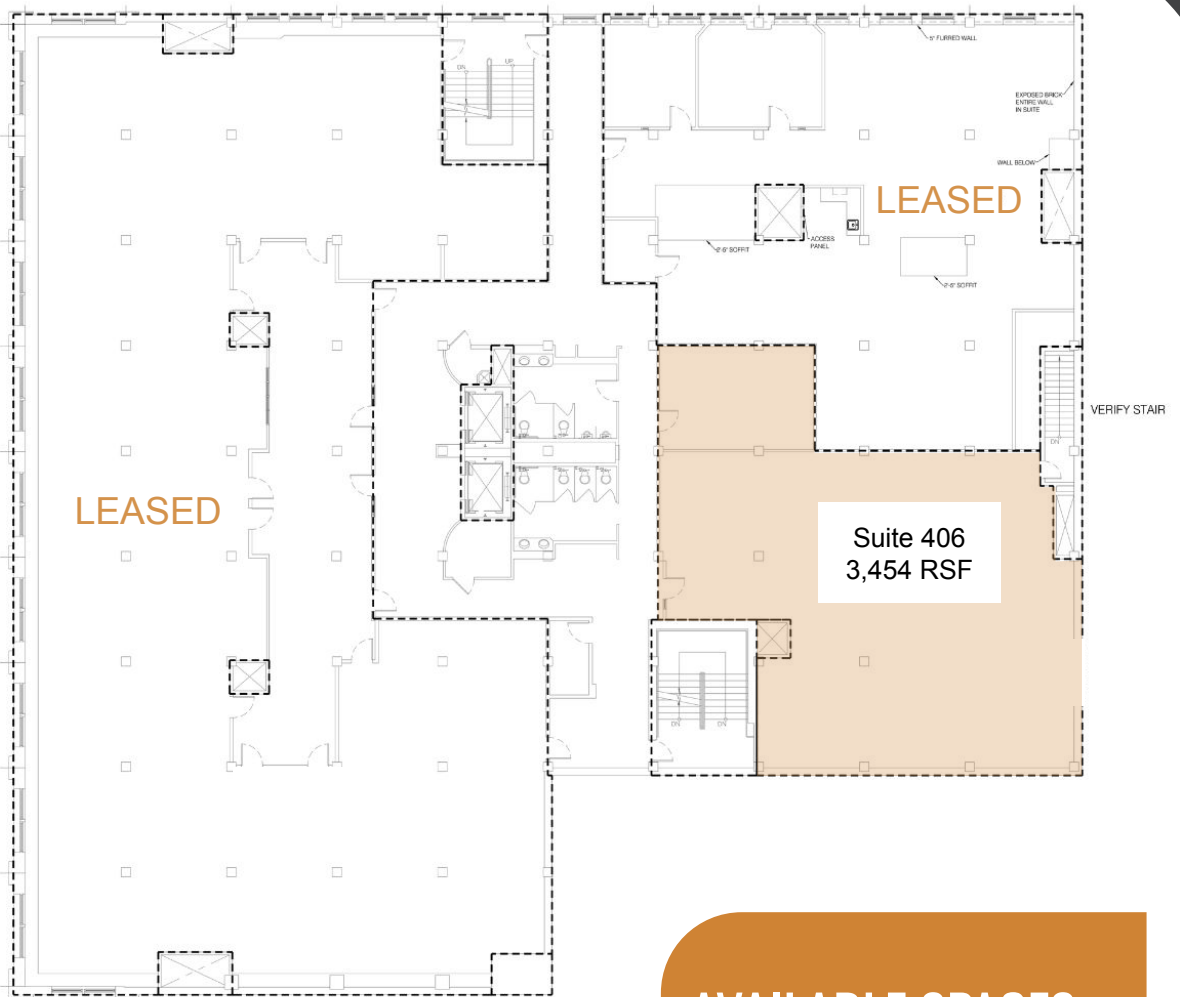
- 4,033 RSF
- Demisable to 1,705 RSF

Suite 304

- 977 RSF
- Sink in Suite

Information is deemed reliable but not guaranteed. Broker not responsible for changes errors or commissions. All square footages are for conveniences only. All information should be verified prior to leasing or purchasing property.

4TH FLOOR



AVAILABLE SPACES

Suite 406

- 3,454 RSF

Information is deemed reliable but not guaranteed. Broker not responsible for changes errors or commissions. All square footages are for conveniences only. All information should be verified prior to leasing or purchasing property.

5TH FLOOR



AVAILABLE SPACES

17,943 SF

- Demisable to 2,887+/- RSF
- Former Tenant (WA Trust Bank) Built out call center

Information is deemed reliable but not guaranteed. Broker not responsible for changes errors or commissions. All square footages are for conveniences only. All information should be verified prior to leasing or purchasing property.

6TH FLOOR



AVAILABLE SPACES

Suite 605
5,137 RSF

Suite 606
2,554 RSF

Information is deemed reliable but not guaranteed. Broker not responsible for changes errors or commissions. All square footages are for conveniences only. All information should be verified prior to leasing or purchasing property.