

Home report

535 Green Ridge St,Scranton,Pennsylvania,United States

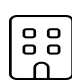


Total Area: 2650 sq. ft

Below Ground: 0 sq. ft, Floor 2: 2650 sq. ft

Excluded: Basement 1446 sq. ft, Storage 170 sq. ft, Room 56 sq. ft, WC 23 sq. ft, Garage 701 sq. ft, Walls: 256 sq. ft

Property summary

 **2** Floors

 **2** Half baths

 **1** Garages

Home report

535 Green Ridge St,Scranton,Pennsylvania,United States



Room dimensions

Floor 1 Below ground

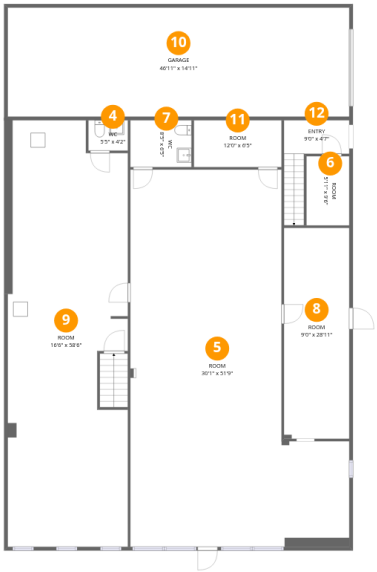
Total:0sqft

Excluded: 1616sqft

#		Max Dimensions	sqft	Included
1	Storage	19'1" x 8'11"	170 sq. ft	No
2	Basement	16'6" x 30'0"	495 sq. ft	No
3	Basement	19'1" x 46'6"	886 sq. ft	No

Home report

535 Green Ridge St,Scranton,Pennsylvania,United States

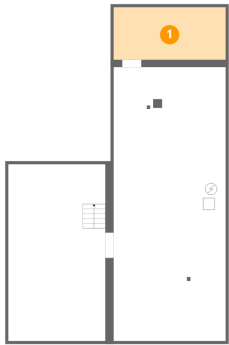


Room dimensions

Floor 2 Total:2650sqft Excluded: 780sqft

#		Max Dimensions	sqft	Included
4	WC	5'5" x 4'2"	23 sq. ft	No
5	Room	30'1" x 51'9"	1209 sq. ft	Yes
6	Room	5'11" x 9'6"	56 sq. ft	No
7	WC	8'5" x 6'5"	54 sq. ft	Yes
8	Room	9'0" x 28'11"	259 sq. ft	Yes
9	Room	16'6" x 58'6"	889 sq. ft	Yes
10	Garage	46'11" x 14'11"	701 sq. ft	No
11	Room	12'0" x 6'5"	77 sq. ft	Yes
12	Entry	9'0" x 4'7"	68 sq. ft	Yes

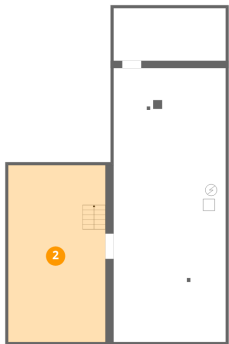
1 Floor 1 - Storage



Max Dimensions: 19'1" x 8'11"
Calculated Area: 170 sq. ft
Included: No

Heated: No
Finished: No
Enclosed: No
Contiguous: Yes
Permitted: Yes
Wet space: No
Addition: No
Conversion: No

2 Floor 1 - Basement



Max Dimensions: 16'6" x 30'0"
Calculated Area: 495 sq. ft
Included: No

Heated: Yes
Finished: No
Enclosed: Yes
Contiguous: Yes
Permitted: Yes
Wet space: No
Addition: No
Conversion: No

3 Floor 1 - Basement



Max Dimensions: 19'1" x 46'6"
Calculated Area: 886 sq. ft
Included: No

Heated: Yes
Finished: No
Enclosed: Yes
Contiguous: Yes
Permitted: Yes
Wet space: No
Addition: No
Conversion: No

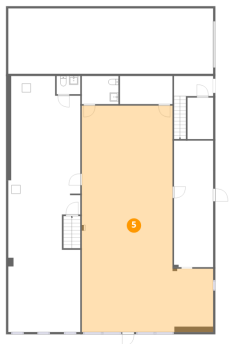
4 Floor 2 - WC



Max Dimensions: 5'5" x 4'2"
Calculated Area: 23 sq. ft
Included: No

Heated: Yes
Finished: No
Enclosed: Yes
Contiguous: Yes
Permitted: Yes
Wet space: Yes
Addition: No
Conversion: No

5 Floor 2 - Room



Max Dimensions: 30'1" x 51'9"
Calculated Area: 1209 sq. ft
Included: Yes

Heated: Yes
Finished: Yes
Enclosed: Yes
Contiguous: Yes
Permitted: Yes
Wet space: No
Addition: No
Conversion: No

6 Floor 2 - Room



Max Dimensions: 5'11" x 9'6"
Calculated Area: 56 sq. ft
Included: No

Heated: Yes
Finished: No
Enclosed: Yes
Contiguous: Yes
Permitted: Yes
Wet space: No
Addition: No
Conversion: No

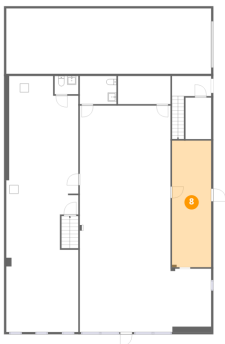
7 Floor 2 - WC



Max Dimensions: 8'5" x 6'5"
Calculated Area: 54 sq. ft
Included: Yes

Heated: Yes
Finished: Yes
Enclosed: Yes
Contiguous: Yes
Permitted: Yes
Wet space: Yes
Addition: No
Conversion: No

8 Floor 2 - Room



Max Dimensions: 9'0" x 28'11"
Calculated Area: 259 sq. ft
Included: Yes

Heated: Yes
Finished: Yes
Enclosed: Yes
Contiguous: Yes
Permitted: Yes
Wet space: No
Addition: No
Conversion: No

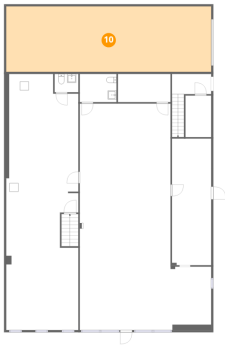
9 Floor 2 - Room



Max Dimensions: 16'6" x 58'6"
Calculated Area: 889 sq. ft
Included: Yes

Heated: Yes
Finished: Yes
Enclosed: Yes
Contiguous: Yes
Permitted: Yes
Wet space: No
Addition: No
Conversion: No

10 Floor 2 - Garage



Max Dimensions: 46'11" x 14'11"
Calculated Area: 701 sq. ft
Included: No

Heated: No
Finished: No
Enclosed: Yes
Contiguous: Yes
Permitted: Yes
Wet space: No
Addition: No
Conversion: No

11 Floor 2 - Room



Max Dimensions: 12'0" x 6'5"
Calculated Area: 77 sq. ft
Included: Yes

Heated: Yes
Finished: Yes
Enclosed: Yes
Contiguous: Yes
Permitted: Yes
Wet space: No
Addition: No
Conversion: No

12 Floor 2 - Entry



Max Dimensions: 9'0" x 4'7"
Calculated Area: 68 sq. ft
Included: No

Heated: Yes
Finished: Yes
Enclosed: Yes
Contiguous: No
Permitted: Yes
Wet space: No
Addition: No
Conversion: No