



SOUTH PARK GROUP

www.southparkgroup.com



FOR LEASE

LIVE / WORK LOFT

8314 Beverly Boulevard, Unit 204
Los Angeles, California 90048

Live/Work Lofts in Beverly Grove between La Cienega and Sweetzer Avenue. Beautiful kitchen and bathroom with marble counter tops and wood cabinetry. High ceilings with exposed wood beams. Hardwood floors, modern finishes throughout. Outdoor patio, large walk-in closet and washer/dryer inside unit. Open floor plan with lots of natural light.

JACK RAVAN

Tel. 323.782.1270

E. jackravan@southparkgroup.com

No. 00890189

AVAILABLE SPACE

Size: Approximately 1,600 rentable sqft

Rate: \$6,200 per month, Modified Gross

SOUTH PARK GROUP | 8322 Beverly Blvd., Suite 301 | Los Angeles, CA 90048

This information has been furnished by sources that we deem reliable, but for which we assume no liability. The information contained herein is given, in confidence, with the understanding that all negotiations pertaining to this property be handled through the submitting office. All measurements are approximate.



SOUTH PARK GROUP

www.southparkgroup.com

INTERIOR

8314 Beverly Boulevard, Los Angeles, California 90048



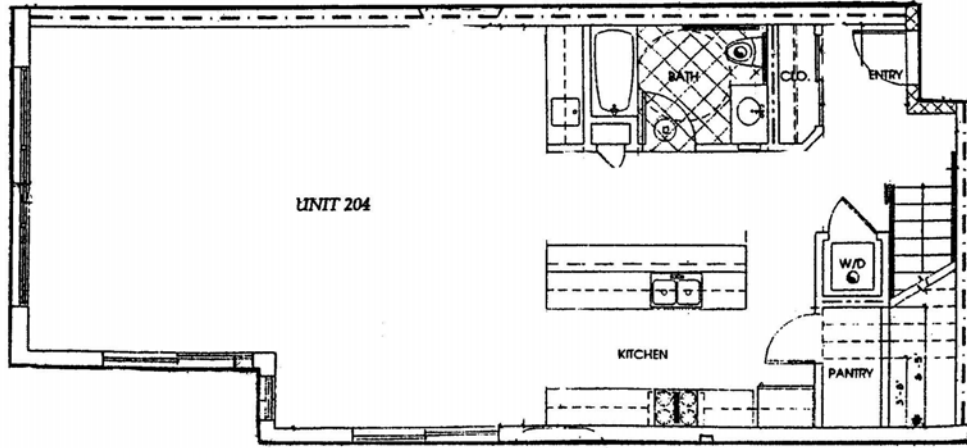
SOUTH PARK GROUP | 8322 Beverly Blvd., Suite 301 | Los Angeles, CA 90048

This information has been furnished by sources that we deem reliable, but for which we assume no liability. The information contained herein is given, in confidence, with the understanding that all negotiations pertaining to this property be handled through the submitting office. All measurements are approximate.

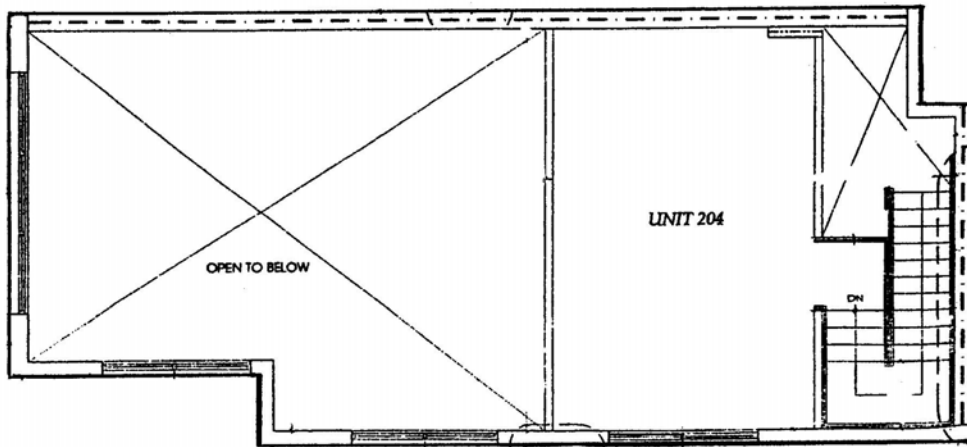


FLOOR PLAN

8314 Beverly Blvd., Unit 204, Los Angeles, California 90048



2nd Floor Plan



Loft Plan

Not Drawn to Scale