

# C&S

INVESTMENT PROPERTIES, INC.

## SUITE A

- 600 Square Feet
- \$19.00 SF/YR
- \$950 per month
- 16 ft tall ceilings with open loft feeling

## SUITE B

- 2,525 Square Feet
- \$21.00 SF/YR
- \$4,400 per month
- Large Windows
- Skylights
- 2 Cosests

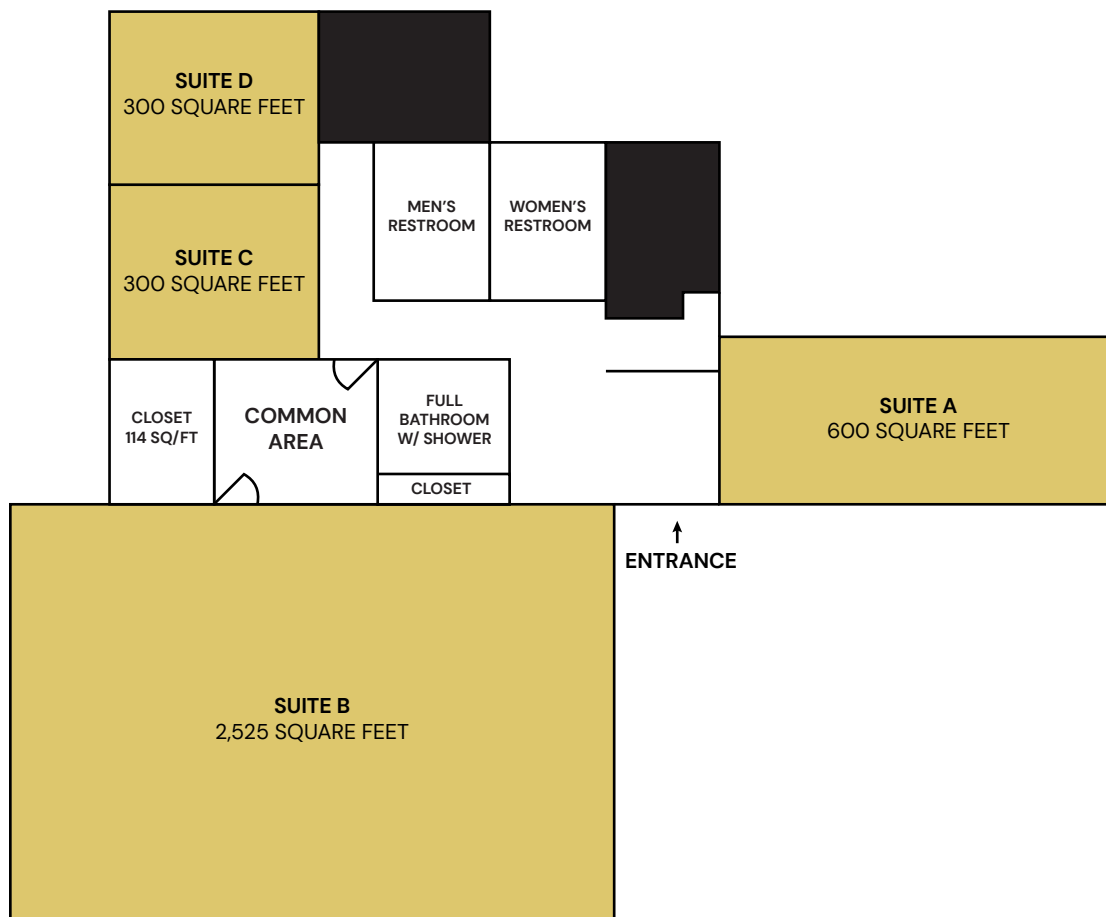
## SUITE C

- 300 Square Feet
- \$17.00 SF/YR
- \$425 per month

## SUITE D

- 320 Square Feet
- \$17.00 SF/YR
- \$450 per month

Tenant responsible for phone, internet and PO Box. No mail service at this location.



9095 Bond Street  
Overland Park, KS 66214