

NEW COMMERCIAL BUILDING AT CELLON CREEK COMMERCE PARK U.S. HWY 441, ALACHUA, FLORIDA

GENERAL NOTES

1. PROJECT DESCRIPTION: CONSISTS OF A NEW ONE-STORY COMMERCIAL BUILDING WITH ELEVEN SEPARATE SUITES. EACH SUITE WILL HAVE AN OFFICE IN THE FRONT AND WAREHOUSE SPACE IN THE BACK. THE OFFICE AREAS WILL BE CONDITIONED AND THE WAREHOUSE AREAS WILL NOT.
2. THIS PROJECT MEET THE REQUIREMENTS OF:
FLORIDA BUILDING CODE, 2004 EDITION
FLORIDA FIRE PREVENTION, 2001 EDITION
3. BUILDING AREA: 13,800 S.F.
FACTORY GROUP F-1 MODERATE HAZARD
4. OCCUPANCY: 100 GROSS: 13,800 S.F./100 = 138 PEOPLE
5. OCCUPANCY LOAD: 100 GROSS: 13,800 S.F./100 = 138 PEOPLE
6. CONSTRUCTION TYPE: TYPE II-B
7. SPRINKLER SYSTEM: NO
8. SUITE SEPARATION: 1 HOUR
9. EGRESS DISTANCE: 60 MAX.
10. REFER TO CITY APPROVED SITE CONSTRUCTION DOCUMENTS FOR ALL SITE WORK TO BE PERFORMED.

INDEX OF DRAWINGS

SHT. NO.	SHEET TITLE
A1	COVER
A2	FOUNDATION PLAN AND DETAILS
A3	BUILDING FLOOR PLAN
A4	TYPICAL UNIT FLOOR PLAN
A5	TYPICAL UNIT MEZZANINE PLAN
A6	TYPICAL UNIT MEZZANINE FRAMING PLAN
A7	BUILDING ELEVATIONS
A8	BUILDING SECTION
A9	ROOF PLAN
A10	FINISH, DOOR, AND WINDOW SCHEDULES
	INTERIOR ELEVATIONS
	WALL SECTIONS
	CONSTRUCTION DETAILS
	TYPICAL UNIT MECHANICAL PLAN
	TYPICAL UNIT REFLECTED CEILING PLAN
	TYPICAL UNIT ELECTRICAL PLAN
	ELECTRICAL LOAD CALCULATIONS
	ELECTRICAL RISER DIAGRAM
	BUILDING PLUMBING/ELECTRICAL PLAN
	PLUMBING RISER DIAGRAM



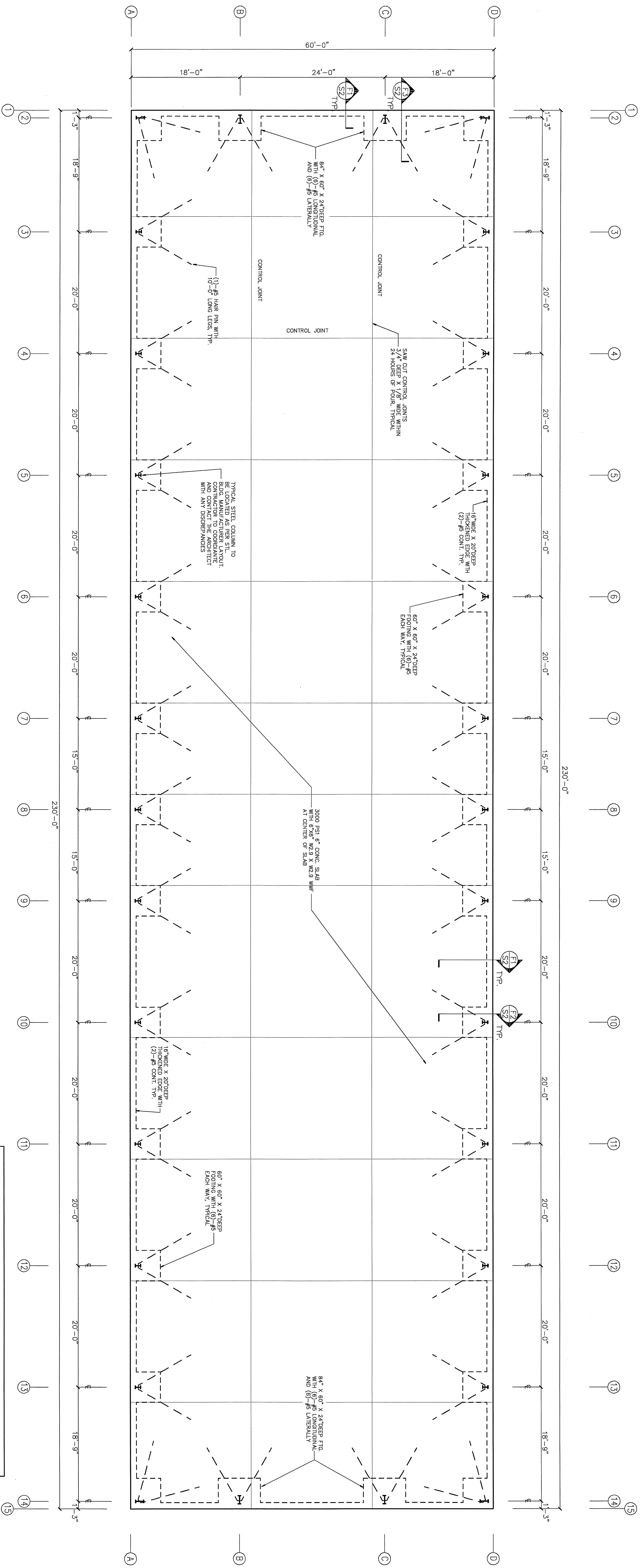
**RICARDO CAVALLINO
AND ASSOCIATES, INC.**
ARCHITECTURE-PLANNING AA 002865
22 SE 5TH AVENUE 352-377-1751 (O)
GAINESVILLE, FL 32601 352-377-1765 (F)

NEW COMMERCIAL BUILDING AT
CELLON CREEK COMMERCE PARK
U.S. HWY 441, ALACHUA, FLORIDA

REVISED:

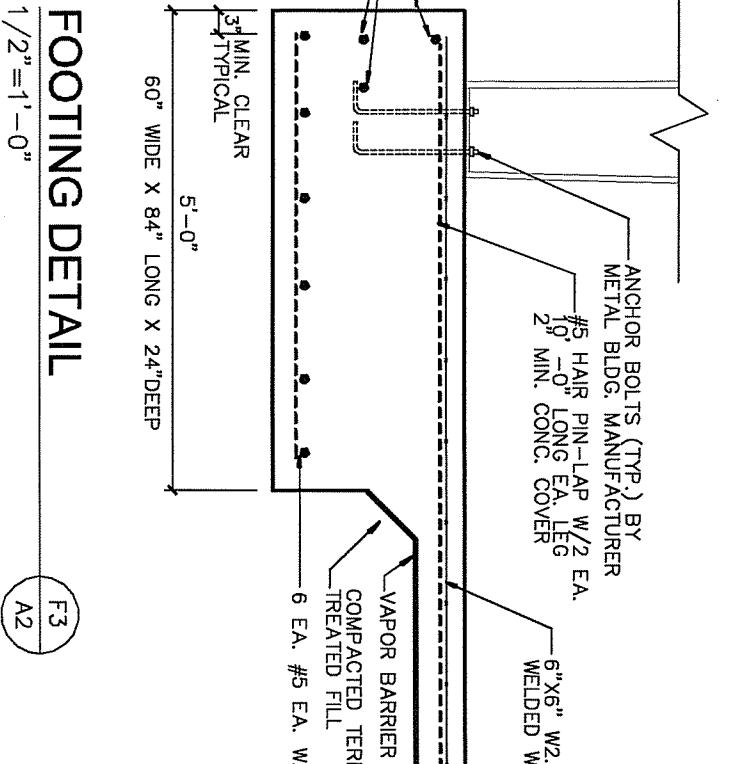
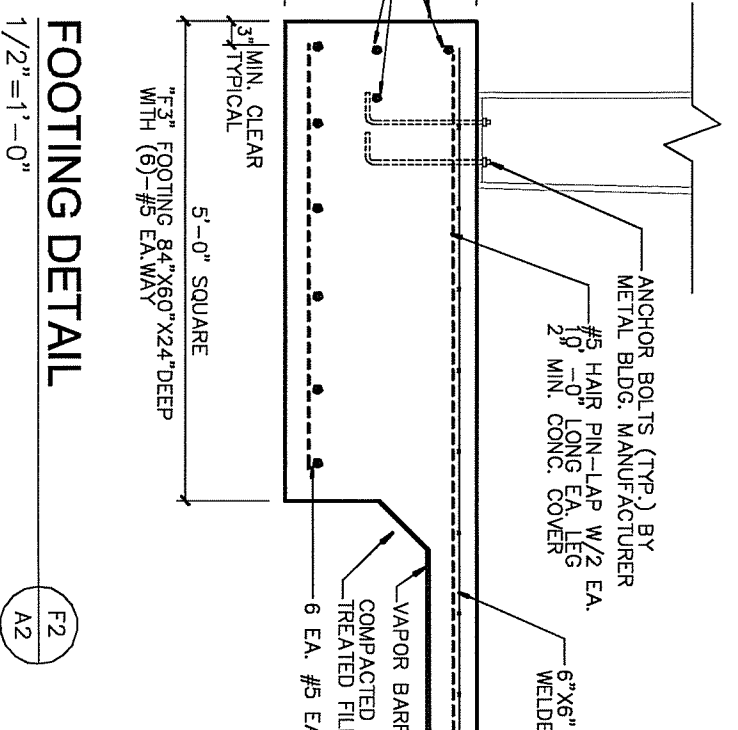
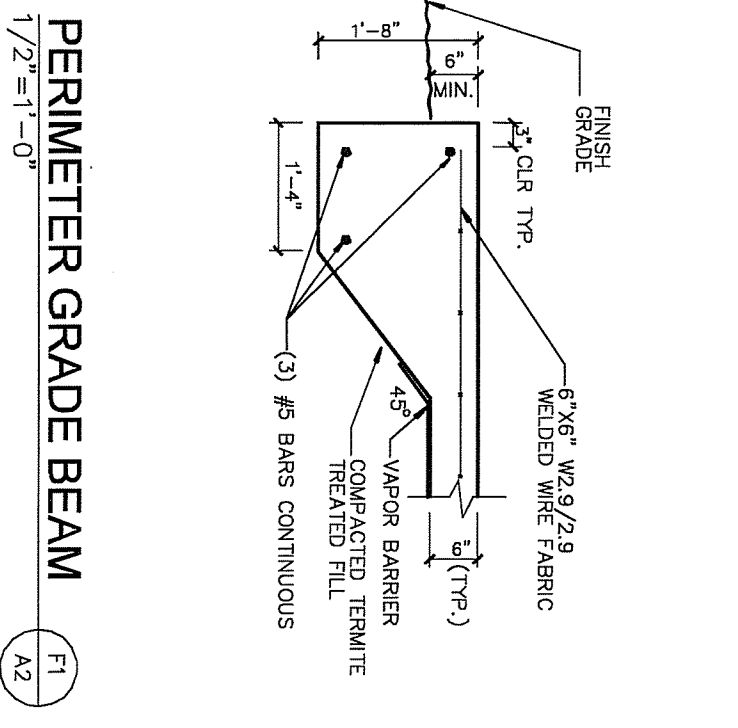
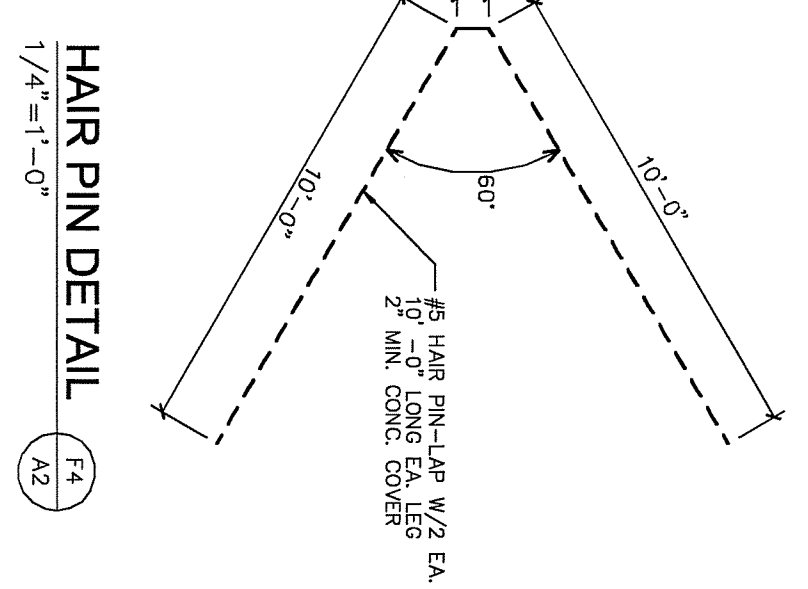
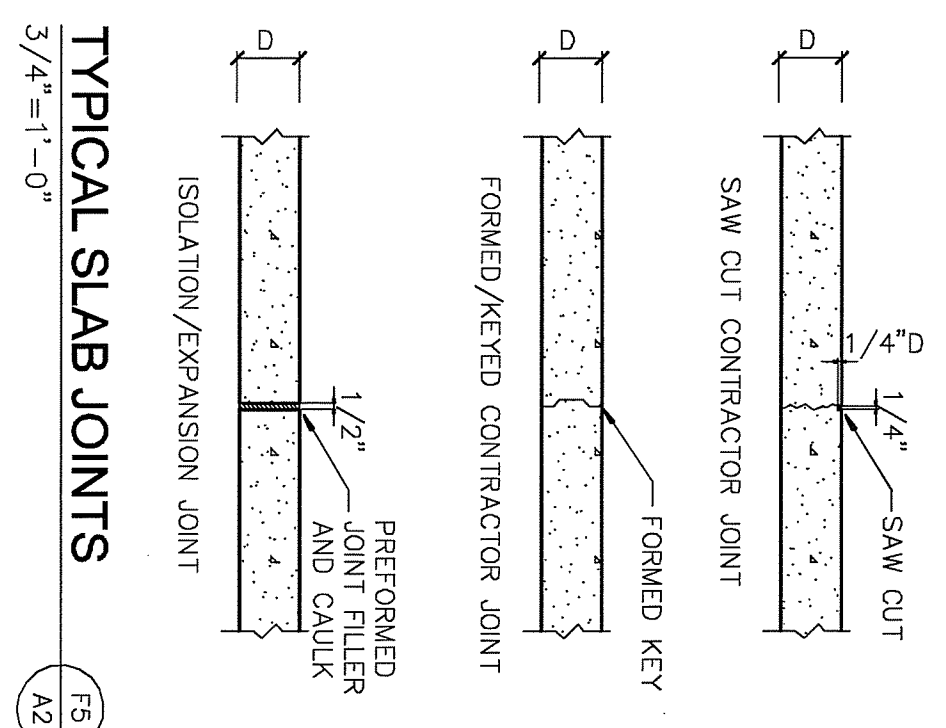
PROJECT: RCA-0524
DRAWN BY: J.W.S.
CHECKED: R.C.
DATE: 1-28-2007

A1



FOUNDATION PLAN

- STRUCTURAL CONCRETE SPECIFICATION**
- GENERAL: ALL CONCRETE CONSTRUCTION SHALL COMPLY WITH FLORIDA BUILDING CODE, 2004 CHAPTER 19, AND ACI 301-99 SPECIFICATION FOR STRUCTURAL CONCRETE. INSTITUTE NOT WEATHER CONSTRUCTION PROCEDURES WHEN TEMPERATURE IS BELOW 40 DEGREES F.
 - CONCRETE:
 - COMPRESSIVE STRENGTH: 3000 PSI AT 28 DAYS.
 - SUMP: 4 INCHES 1 INCH DIA.
 - WATER/CEMENT RATIO: 0.50 MAX. PORTLAND CEMENT FOR MILD EXPOSURE.
 - PORTLAND CEMENT: ASTM C 150 TYPE 1.
 - FLY ASH: OPTIONAL, ASTM C 618, CLASS C OR F, 20 % MAX.
 - AGGREGATE: ASTM C 33, CLEAN & POTABLE.
 - WATER: ASTM C 618, CLEAN & POTABLE.
 - AD MIXTURES: DO NOT USE AD MIXTURES CONTAINING CHLORIDES.
 - REINFORCING STEEL: ASTM A 615, GRADE 40, DEFORMED BARS.
 - BAR COVER:
 - EXPOSED TO WEATHER: 2"
 - BEAM & COLUMN STRIPS: 1 1/2"
 - ALL CORNERS: 1 1/2"
 - PROVIDE CORNER BARS OR 90 DEGREE BEND IN ALL CORNERS.
 - REMOVE ALL REINSTEEL FROM TO CONCRETE PLACEMENT.



COPYRIGHTS: RICARDO CAVALLINO AND ASSOC. INC. © 2007 ALL RIGHTS RESERVED.

REVISIONS:

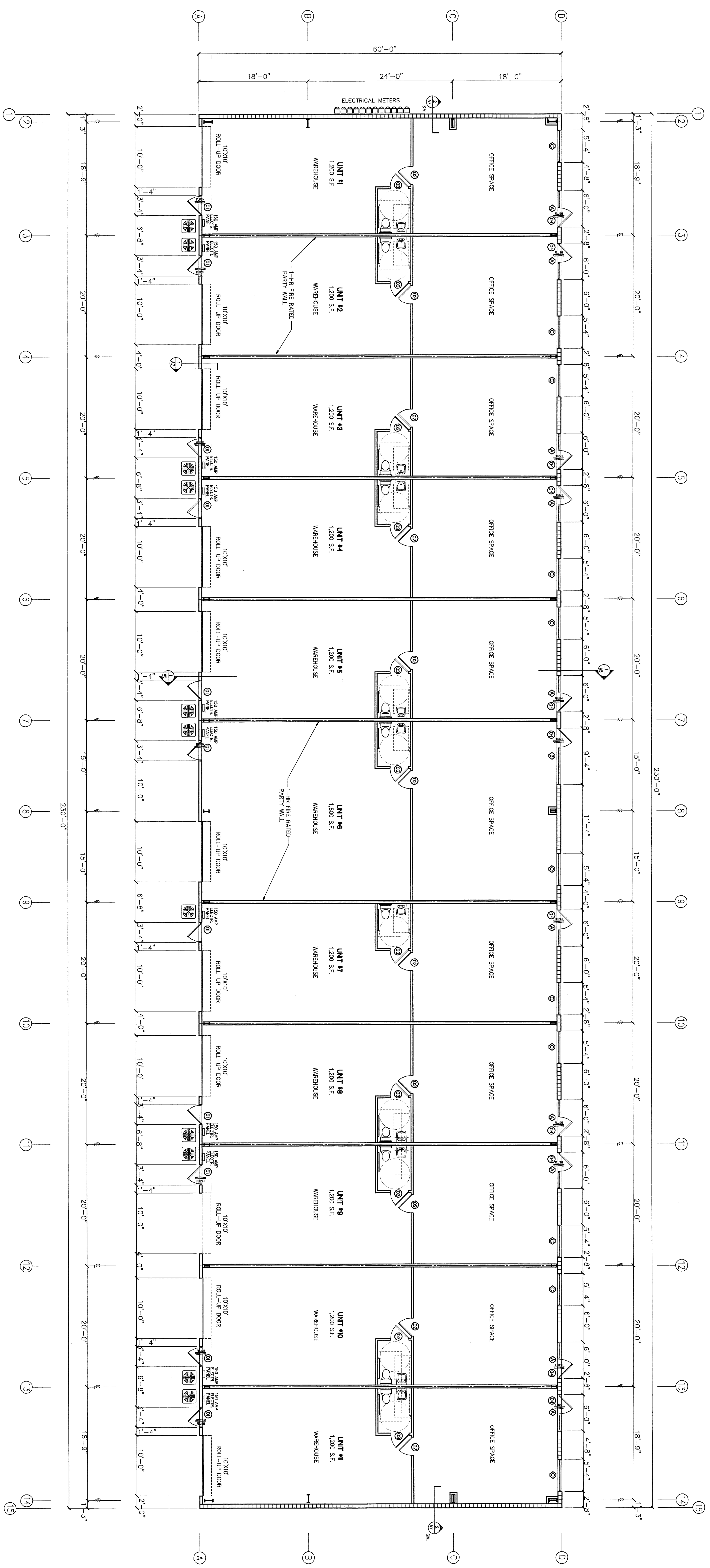
NO.	DATE	DESCRIPTION

PROJECT: RCM-0824
 DRAWN BY: J.W.S.
 CHECKED: R.C.
 DATE: 1-25-2007

A2

**MEM COMMERCIAL BUILDING AT
 CELLON CREEK COMMERCE PARK**
 U.S. HWY 441, ALACHUA, FLORIDA

**RICARDO CAVALLINO
 AND ASSOCIATES, INC.**
 ARCHITECTURE-PLANNING AA 002865
 22 SE 5TH AVENUE 352-377-1751 (O)
 GAINESVILLE, FL 32601 352-377-1765 (F)

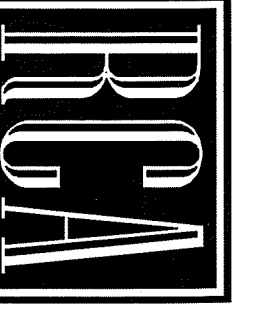


FLOOR PLAN
1/8"=1'-0"

COPYRIGHTS: RICARDO CAVALLINO AND ASSOC. INC.
© 2007 ALL RIGHTS RESERVED

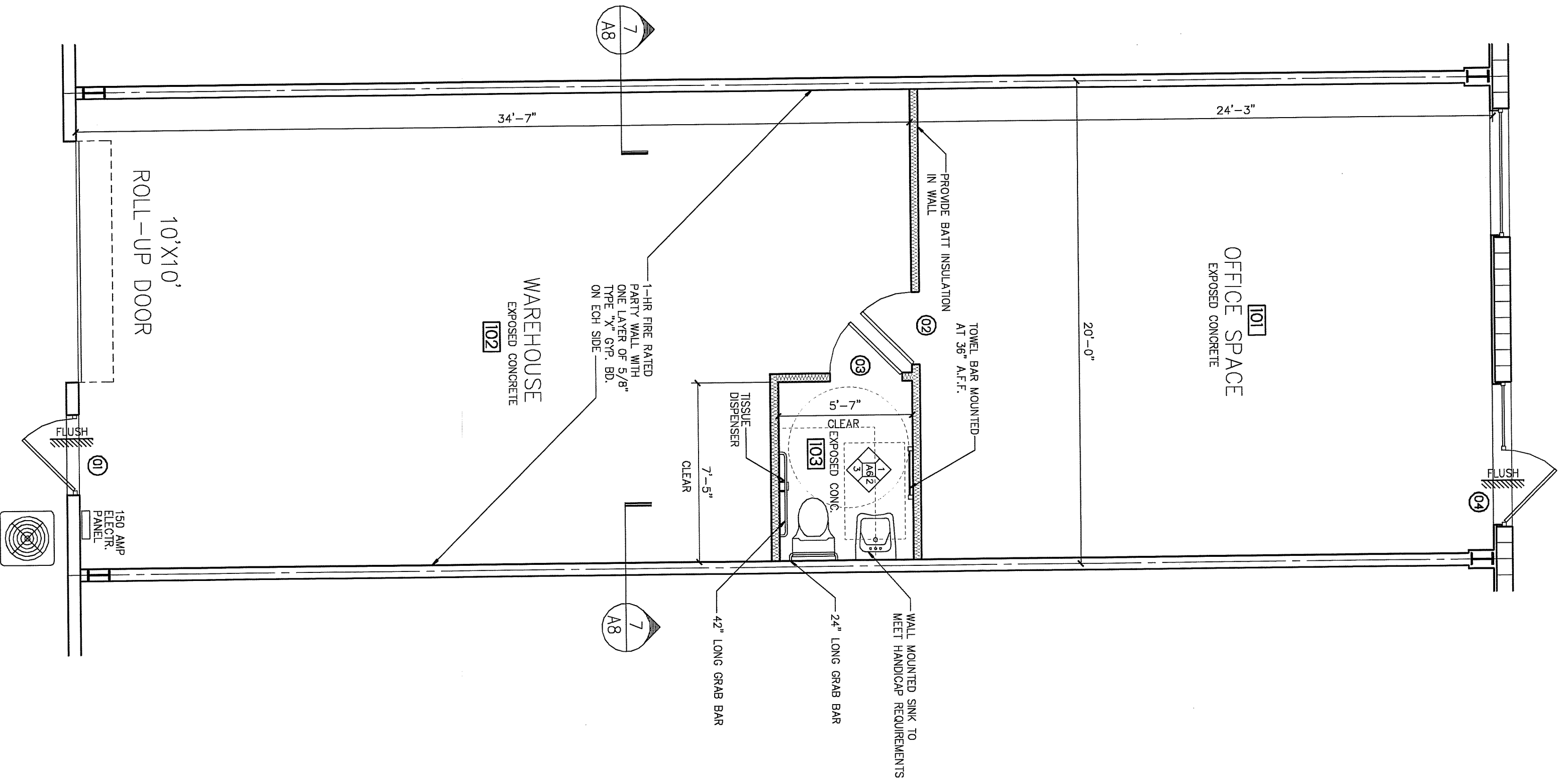
NEW COMMERCIAL BUILDING AT
CELLON CREEK COMMERCE PARK
 U.S. HWY 441, ALACHUA, FLORIDA

RICARDO CAVALLINO AND ASSOCIATES, INC.
 ARCHITECTURE-PLANNING AA 002865
 22 SE 5TH AVENUE 352-377-1751 (O)
 GAINESVILLE, FL 32601 352-377-1765 (F)

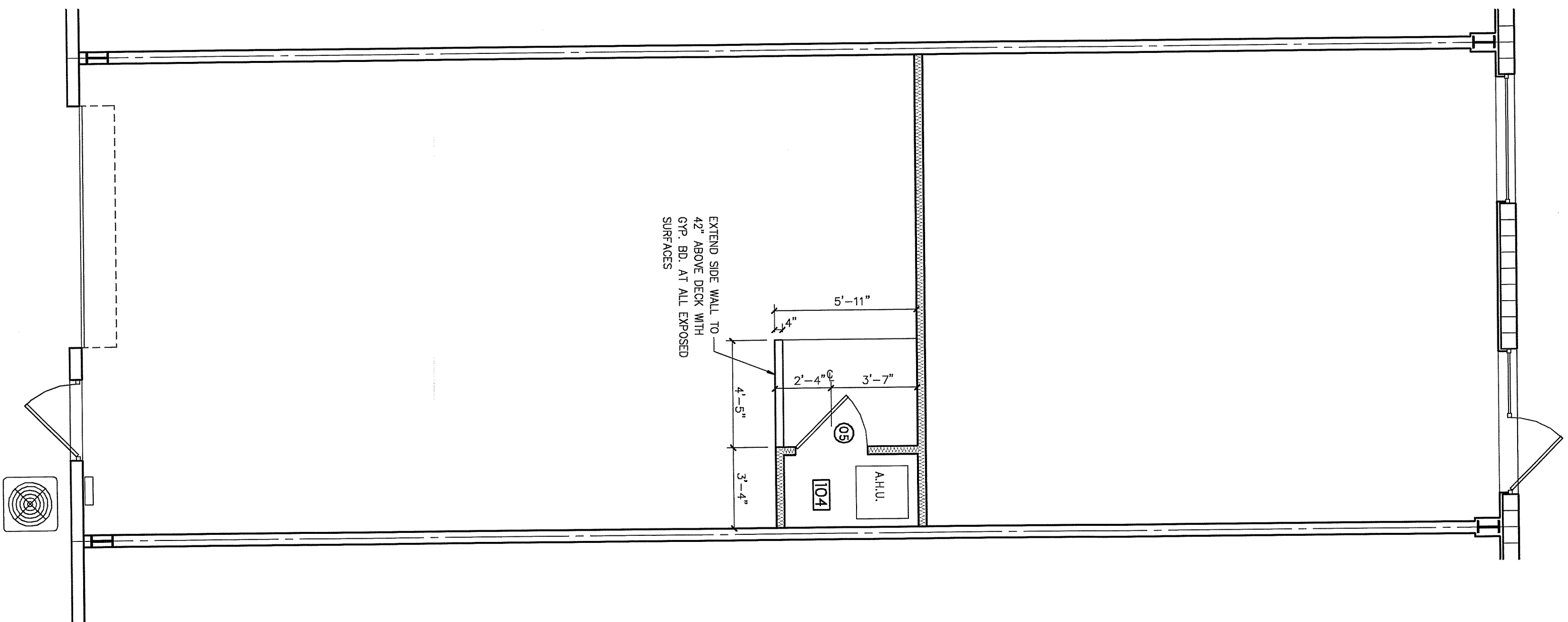


PROJECT: RCA-0624
DRAWN BY: J.W.S.
CHECKED: R.C.
DATE: 1-28-2007

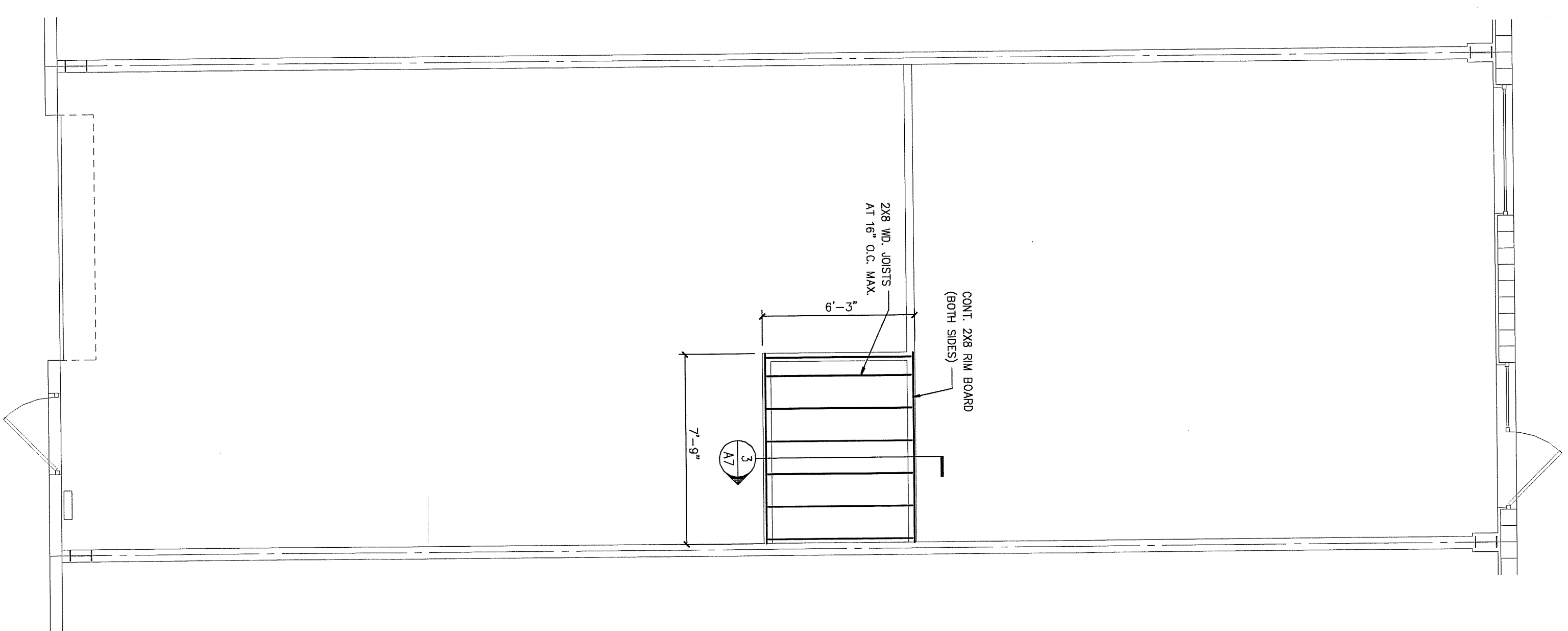
A3



TYPICAL UNIT FLOOR PLAN
1/4"=1'-0"



TYPICAL UNIT MEZZANINE PLAN
1/4"=1'-0"



TYPICAL UNIT MEZZANINE FRAMING PLAN
1/4"=1'-0"

COPYRIGHTS: RICARDO CAVALLINO AND ASSOC. INC.
© 2007 ALL RIGHTS RESERVED

NEW COMMERCIAL BUILDING AT
CELLON CREEK COMMERCE PARK
U.S. HWY 441, ALACHUA, FLORIDA

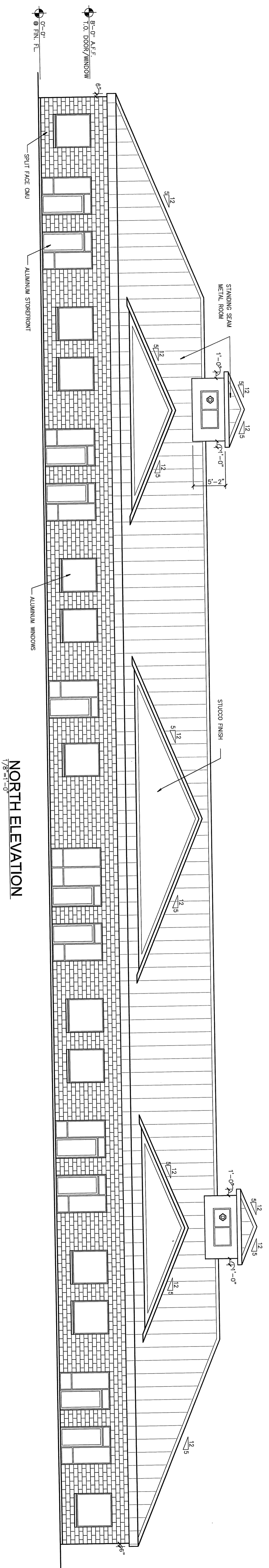
**RICARDO CAVALLINO
AND ASSOCIATES, INC.**
ARCHITECTURE-PLANNING AA 002865
22 SE 5TH AVENUE 352-377-1751 (O)
GAINESVILLE, FL 32601 352-377-1765 (F)



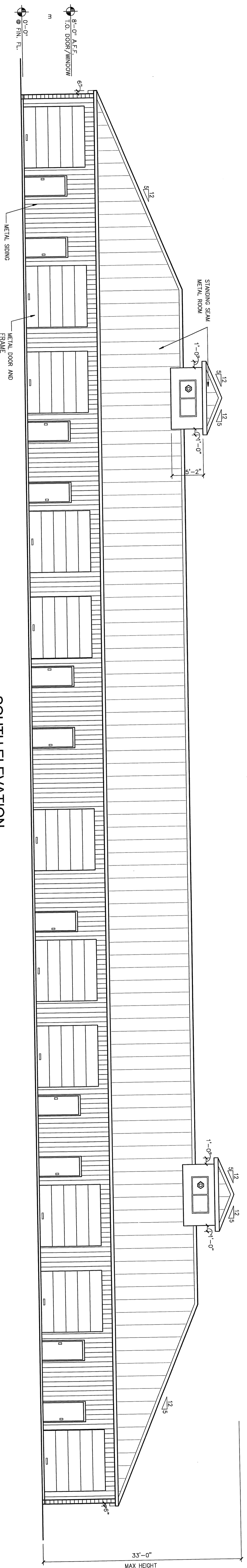
A4

REVISED:

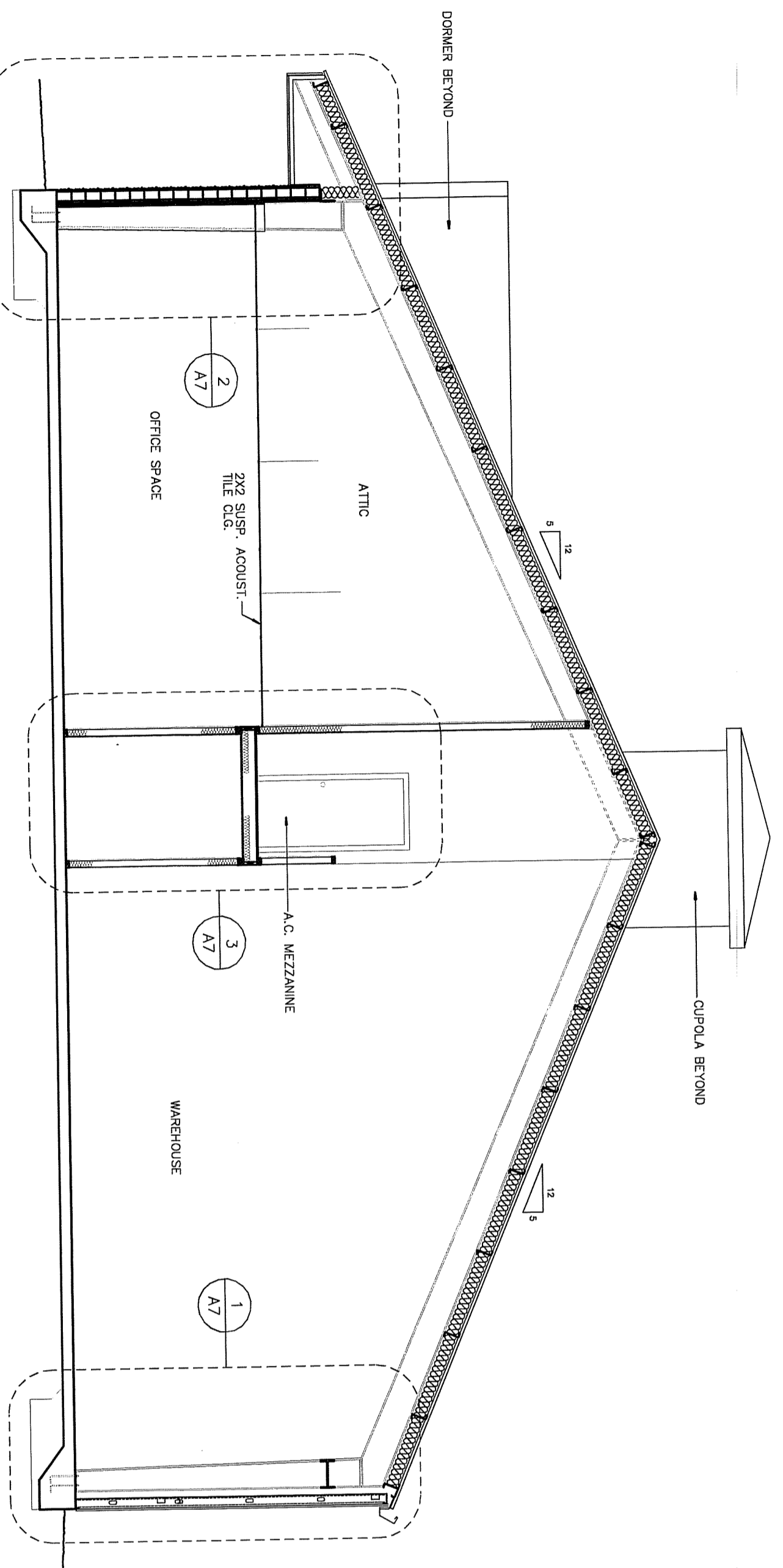
PROJECT: RCA-0824
DRAWN BY: J.W.S.
CHECKED: R.C.
DATE: 1-26-2007



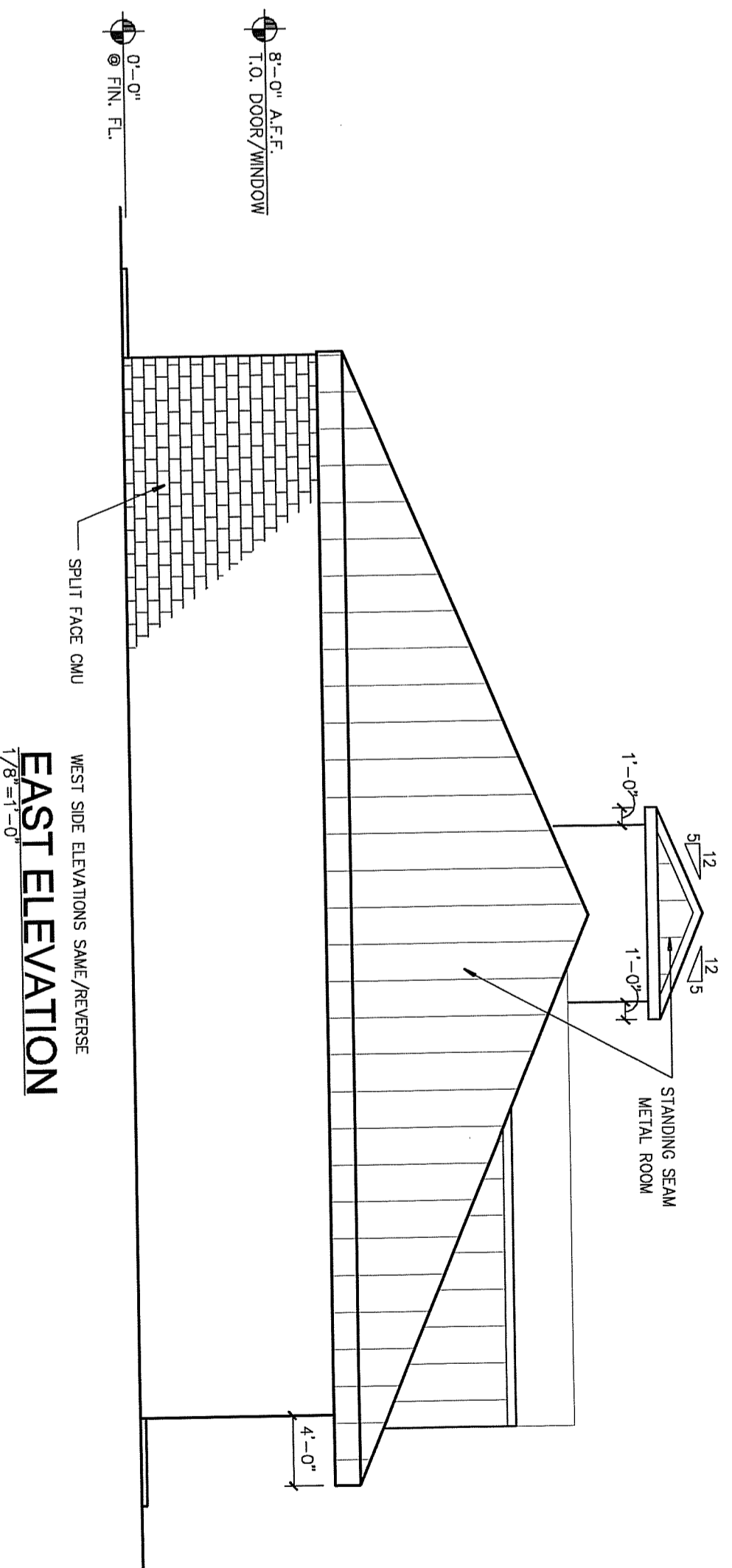
NORTH ELEVATION
1/8"=1'-0"



SOUTH ELEVATION
1/8"=1'-0"



TYPICAL BUILDING SECTION
3/16"=1'-0"

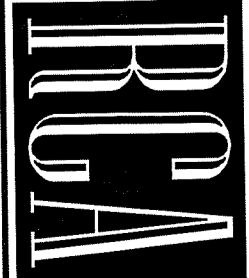


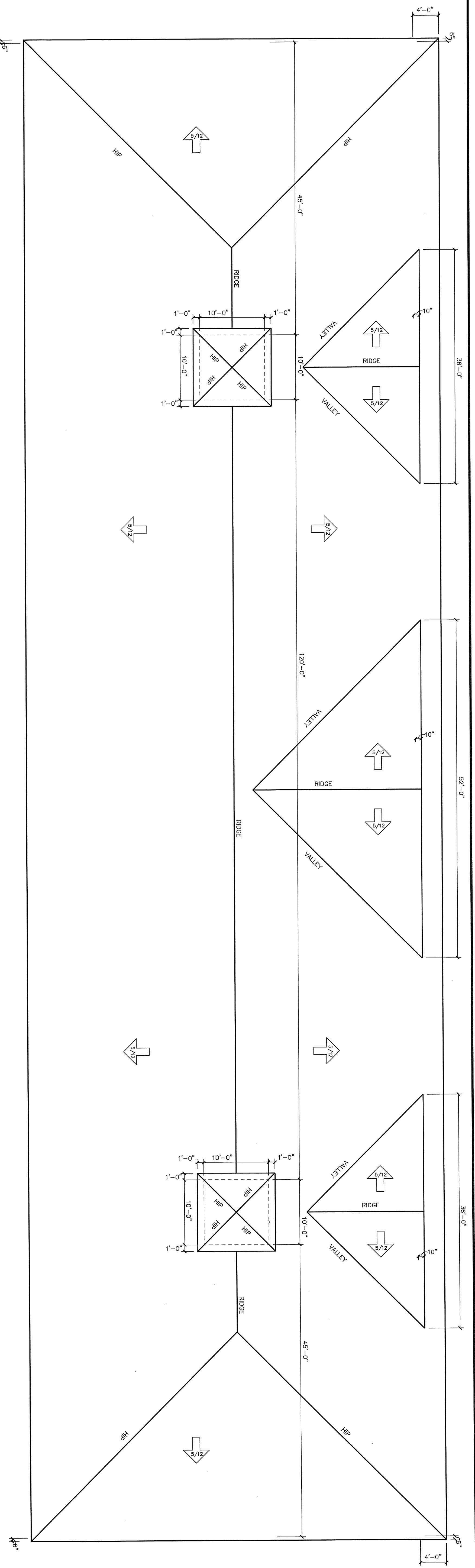
EAST ELEVATION
1/8"=1'-0"

REVISIONS:
PROJECT: RGA-0824
DRAWN BY: J.W.S.
CHECKED: R.C.
DATE: 1-28-2007

NEW COMMERCIAL BUILDING AT
CELLON CREEK COMMERCE PARK
 U.S. HWY 441, ALACHUA, FLORIDA

RICARDO CAVALLINO AND ASSOCIATES, INC.
 ARCHITECTURE—PLANNING AA 002865
 22 SE 5TH AVENUE 352-377-1751 (O)
 GAINESVILLE, FL 32601 352-377-1765 (F)





ROOF PLAN
1/8"=1'-0"

DOOR SCHEDULE									
DR. #	SIZE	TYPE	FRAME	REMARKS					
DR. #	WIDTH	HT.	THICK.	DR. MATL.	HDRWR. TYPE	HDRWR. MATL.	FRM. TYP.	THRESHOLD	DET.
01	3'-0"	7'-0"	1 3/4"	METAL	3	H.M.	WELDED	ALUM.	EXTERIOR DOOR
02	3'-0"	8'-0"	1 3/4"	WOOD	2	H.M.	WELDED	WOOD	
03	3'-0"	8'-0"	1 3/4"	WOOD	2	H.M.	WELDED	WOOD	
04	3'-0"	7'-0"	1 3/4"	ALUM.	4	ALUM.	STOREFRONT	ALUM.	STOREFRONT
05	3'-0"	8'-0"	1 3/4"	WOOD	1	H.M.	WELDED	WOOD	

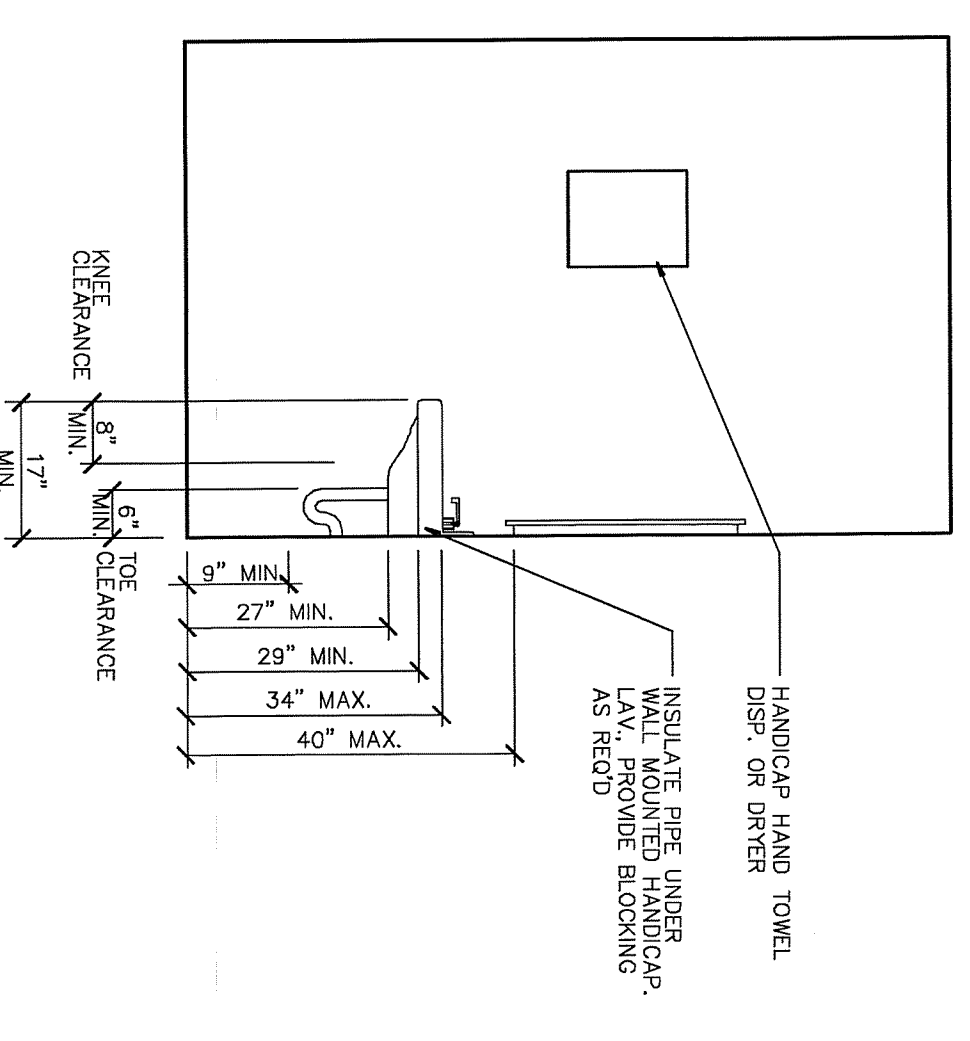
HARDWARE TYPE 1: LEVER HANDLE WITH LOCK SET
 HARDWARE TYPE 2: LEVER HANDLE WITH LOCK SET AND DEARBOLT
 HARDWARE TYPE 3: PUSH/PULL BARS DEARBOLT
 HARDWARE TYPE 4: PUSH/PULL BARS DEARBOLT
 VERIFY WITH OWNER DOOR HARDWARE AND KEYS OF ALL LOCKS

WINDOW SCHEDULE									
WINDOW	DIMENSIONS	MAT.	OPERA.	TYPE	DET.	SILL	REMARKS		
A	6'-0" W x 8'-0" H	ALUM.	FIXED/OPR	A			STOREFRONT: DBL. GLAZED, LOW-E TINT		
B	9'-4" W x 8'-0" H	ALUM.	FIXED/OPR	B			STOREFRONT: DBL. GLAZED, LOW-E TINT		
C	5'-4" W x 5'-8" H	ALUM.	FIXED	C			STOREFRONT: DBL. GLAZED, LOW-E TINT		
D	6'-0" W x 2'-9" H	CORPLA	ALUM.	FIXED	D		STOREFRONT: DBL. GLAZED, LOW-E TINT		

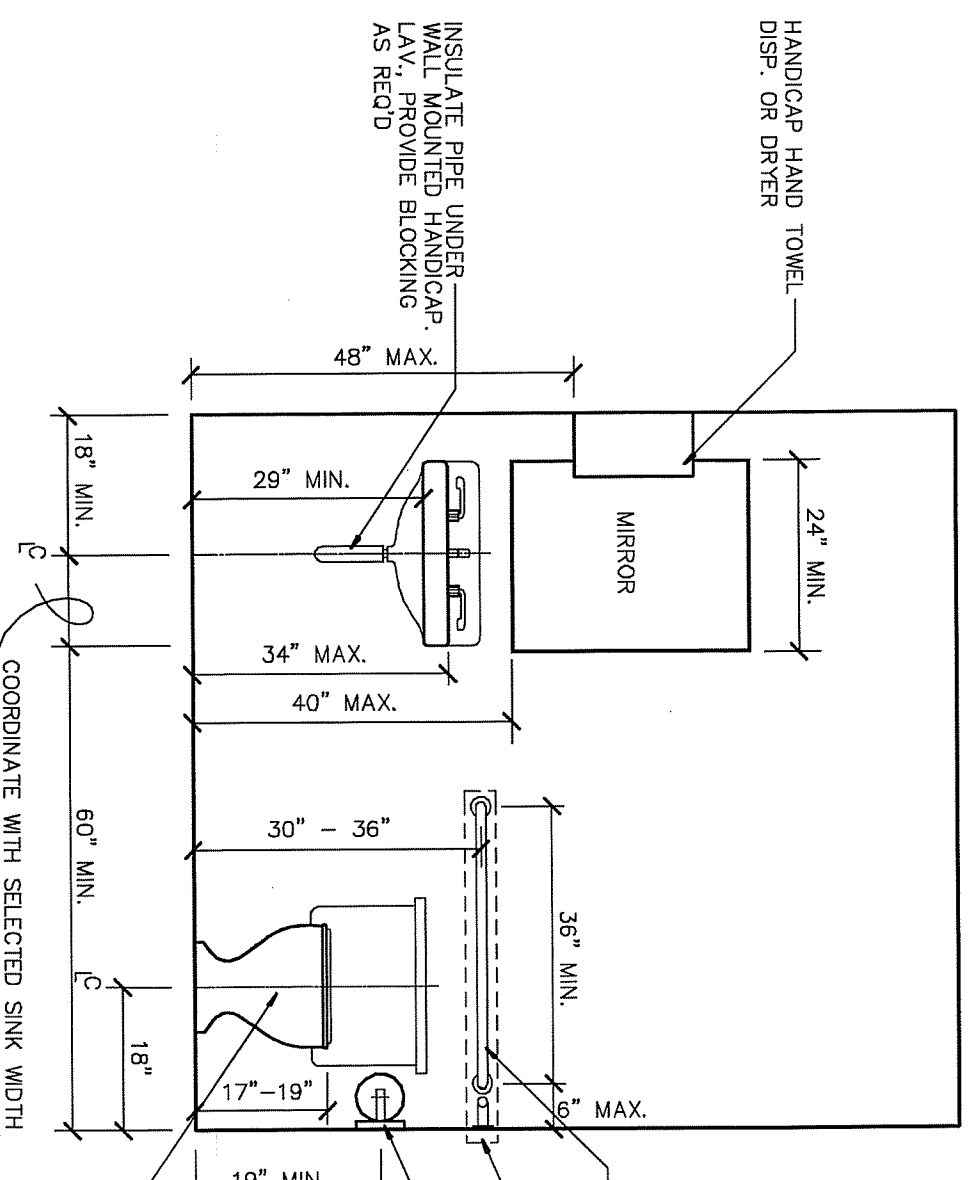
1. SEE BUILDING ELEVATIONS FOR MILLION CONFIGURATION.
 2. WINDOW DIMENSIONS ARE NOMINAL. FINAL DIMENSIONS TO BE DETERMINED BY WINDOW MANUFACTURER AND MODEL.

ROOM FINISH SCHEDULE									
ROOM	FLOOR	WALLS	BASE	CEILING	REMARKS				
101	OFFICE SPACE	2X2 CERAMIC TILE V.C.T. CARPET	3/4" PLYWD. DECK						
102	WAREHOUSE SPACE								
103	H.C. RESTROOM								
104	MECHANICAL								

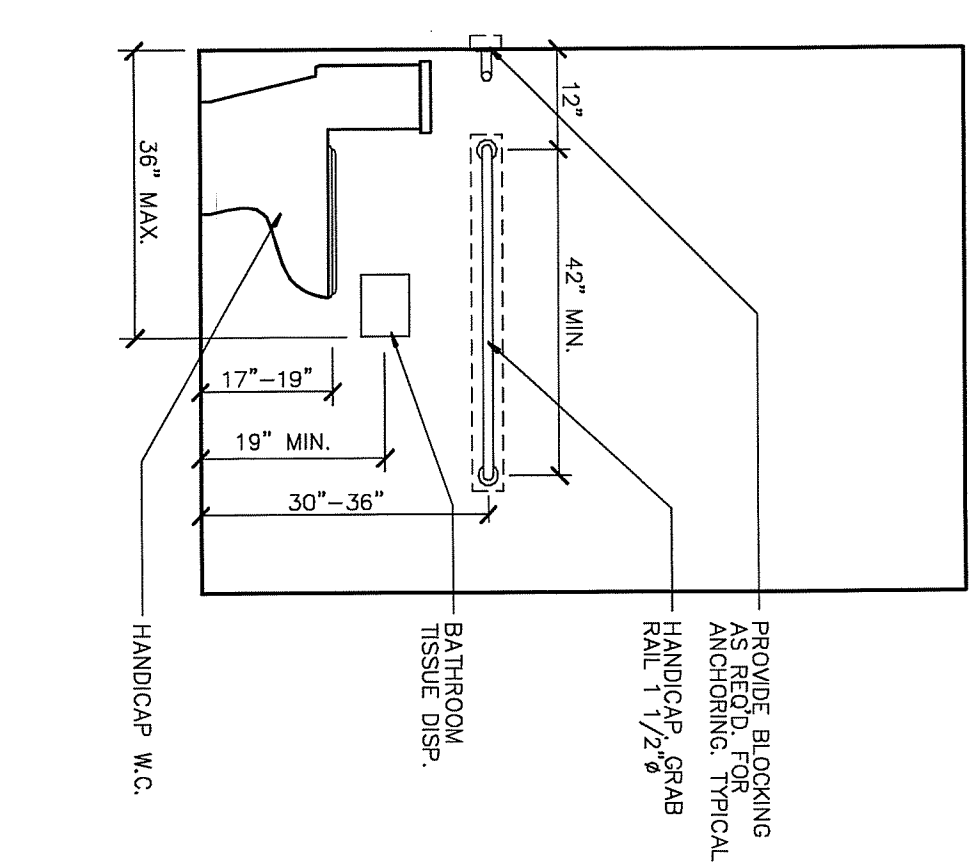
TYPICAL NOTE:
 1. ALL FINISHES TO BE INSTALLED BY TRADE CONTRACTOR.
 2. FINISHES TO BE INSTALLED BY TRADE CONTRACTOR.
 3. FINISHES TO BE INSTALLED BY TRADE CONTRACTOR.
 4. FINISHES TO BE INSTALLED BY TRADE CONTRACTOR.
 5. FINISHES TO BE INSTALLED BY TRADE CONTRACTOR.



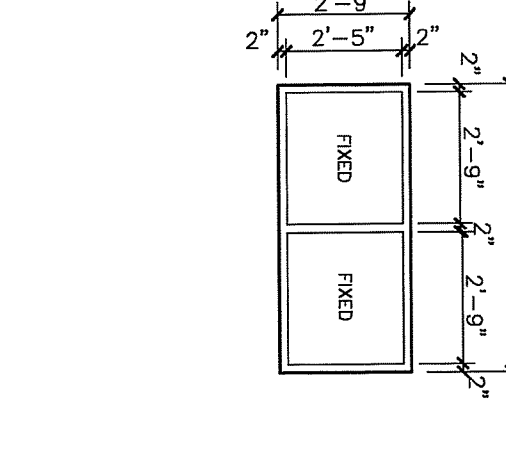
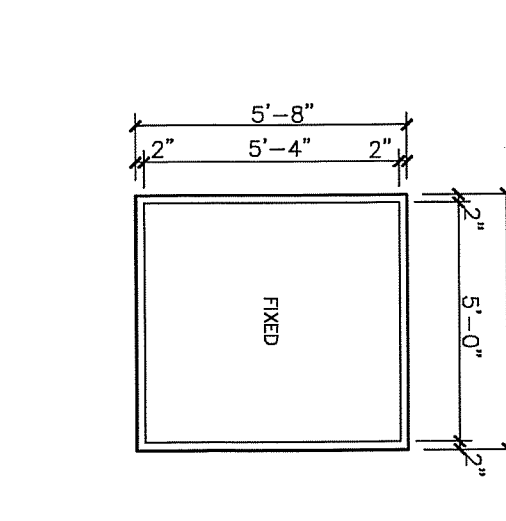
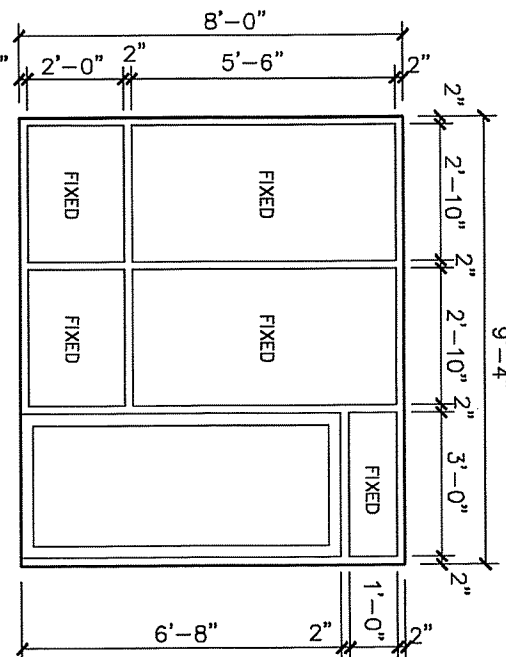
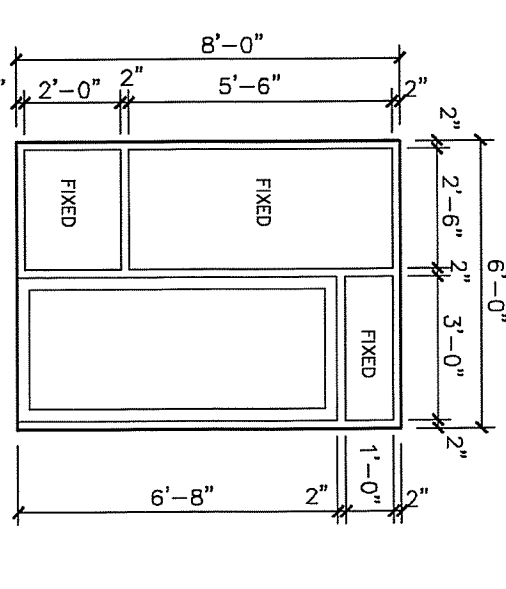
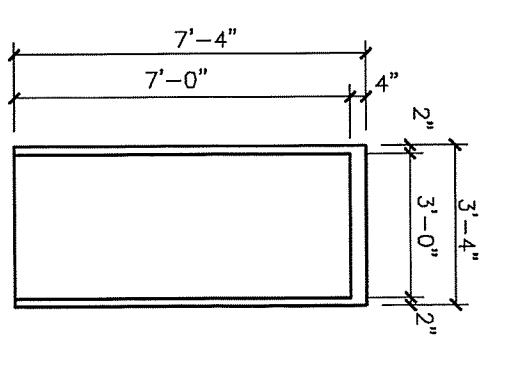
H.C. RESTROOM ELEVATION 1
1/2"=1'-0"



H.C. RESTROOM ELEVATION 2
1/2"=1'-0"



H.C. RESTROOM ELEVATION 3
1/2"=1'-0"

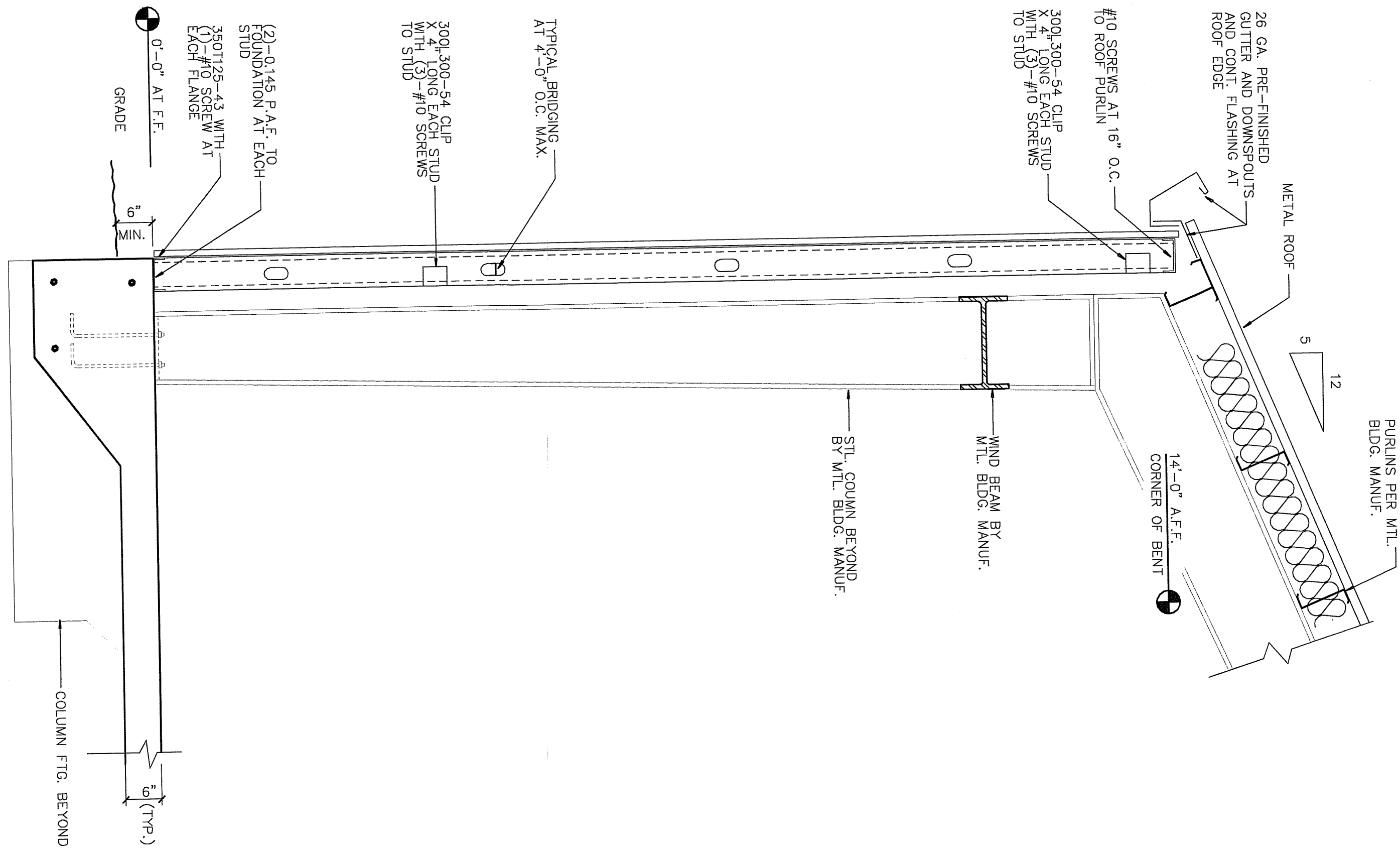


DOORS/WINDOWS/STOREFRONTS TYPES

ROOF SPECIFICATION
 STRONG STAIN 1/2" STRIPLED FINISH.
 ACCESSORS TO MATCH. ACCESSORS TO MATCH.
 ACCESSORS TO MATCH. ACCESSORS TO MATCH.
 ACCESSORS TO MATCH. ACCESSORS TO MATCH.

STOREFRONT SPECIFICATION
 3/4" PLYWOOD DECK.
 2" X 4" STUDS @ 16" O.C.
 2" X 4" STUDS @ 16" O.C.
 2" X 4" STUDS @ 16" O.C.
 2" X 4" STUDS @ 16" O.C.

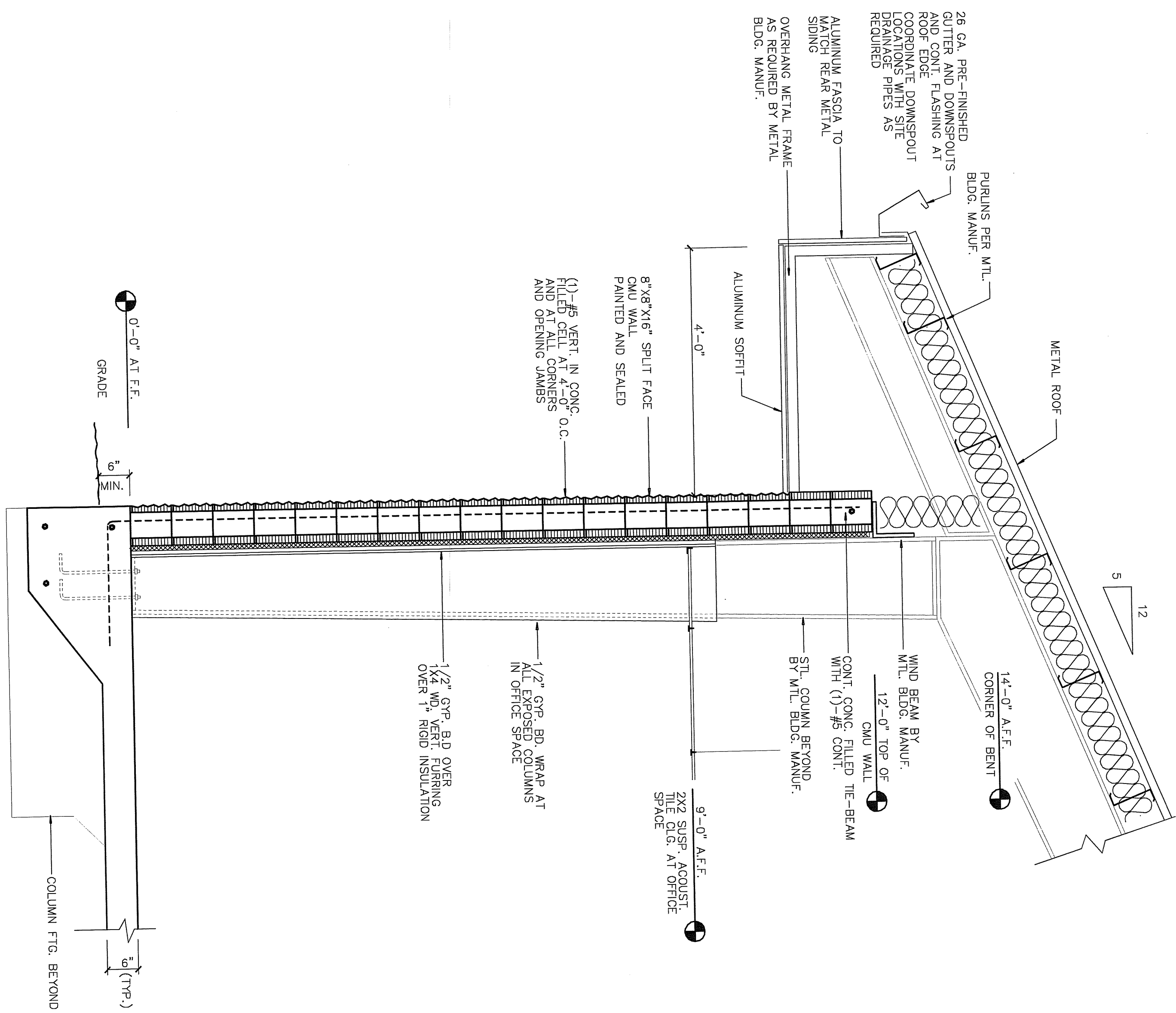
SYNTHETIC STUCCO SPECIFICATION
 3/8" THICK STUCCO.
 3/8" THICK STUCCO.
 3/8" THICK STUCCO.
 3/8" THICK STUCCO.



TYPICAL EXTERIOR METAL WALL SECTION

1
A7

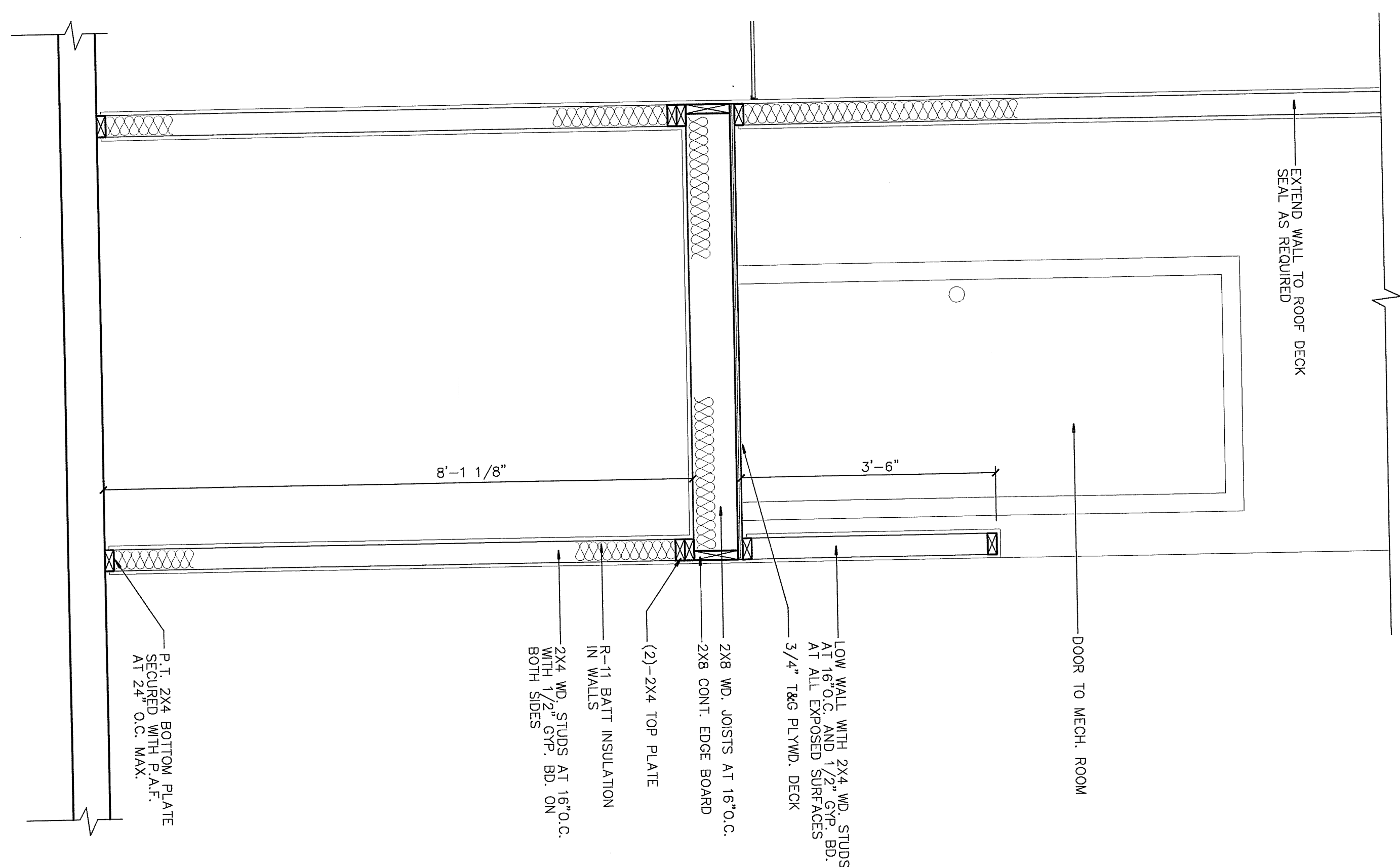
3/4" = 1'-0"



TYPICAL EXTERIOR CMU WALL SECTION

2
A7

3/4" = 1'-0"



MEZZANINE SECTION

3
A7

3/4" = 1'-0"

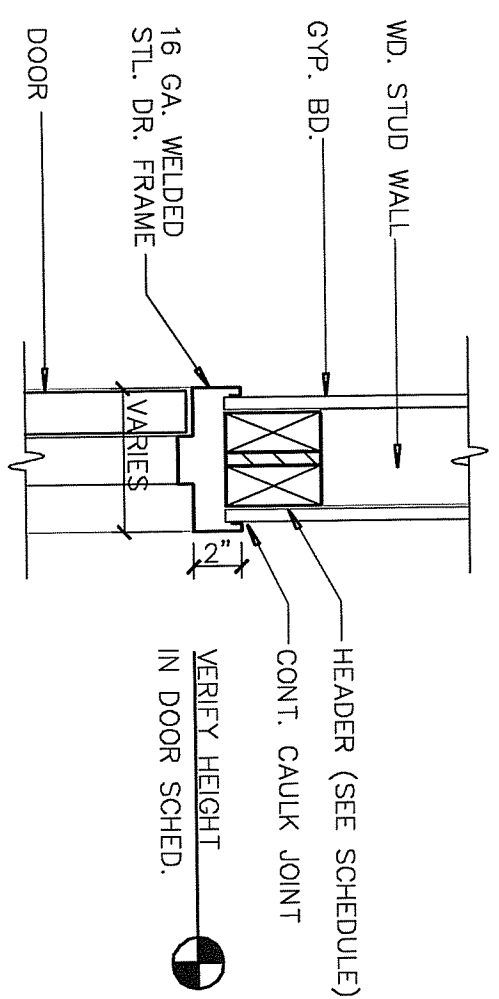
REVISION:

PROJECT: RCM-0824
 DRAWN BY: J.M.S.
 CHECKED: R.C.
 DATE: 1-26-2007

NEW COMMERCIAL BUILDING AT
CELLON CREEK COMMERCE PARK
 U.S. HWY 441, ALACHUA, FLORIDA

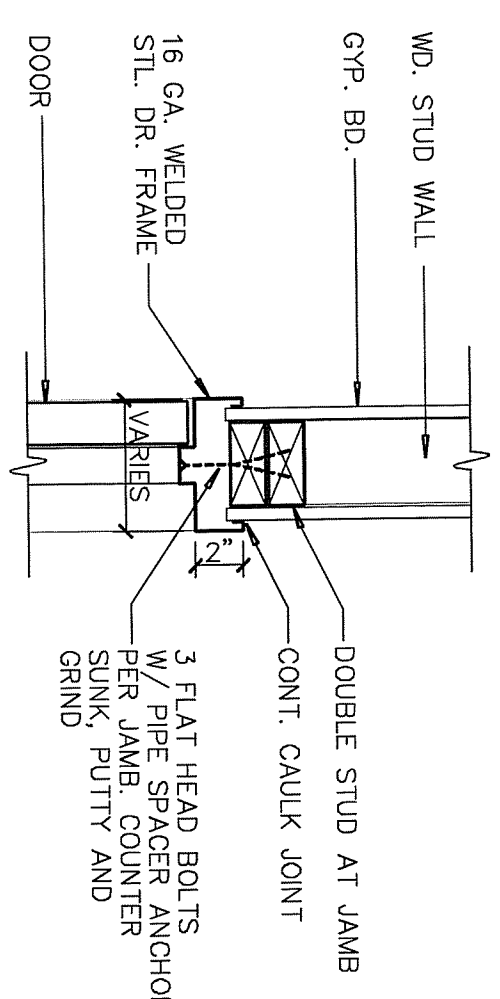
RICARDO CAVALLINO AND ASSOCIATES, INC.
 ARCHITECTURE-PLANNING AA 002865
 22 SE 5TH AVENUE GAINESVILLE, FL 32601
 352-377-1751 (O)
 352-377-1765 (F)





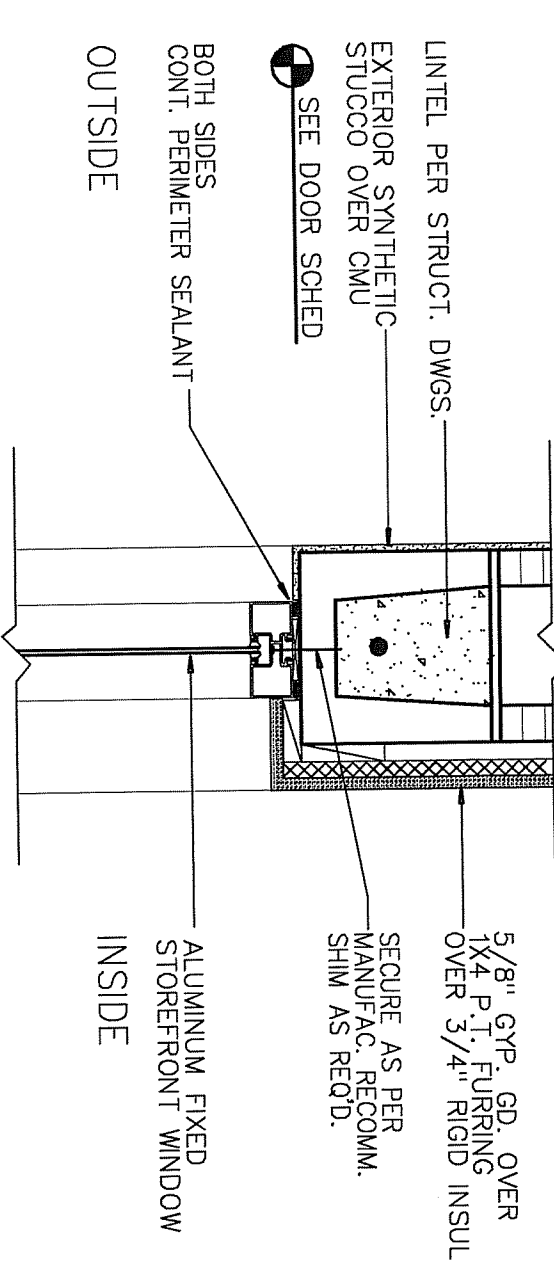
INTERIOR DOOR HEAD
1 1/2"=1'-0"

6
A8



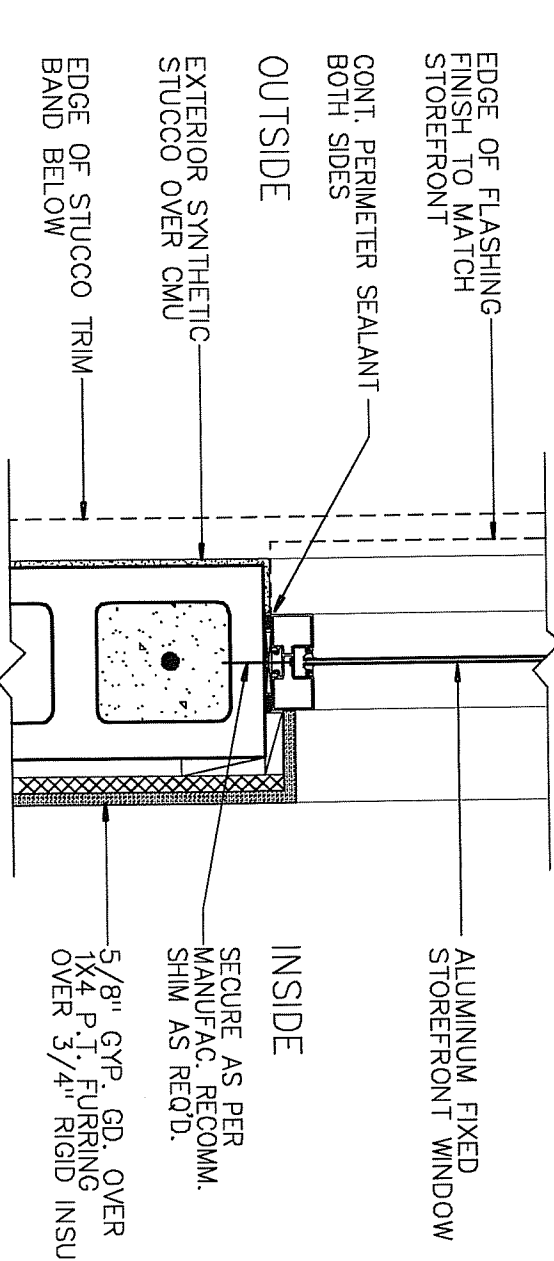
INTERIOR DOOR JAMB
1 1/2"=1'-0"

5
A8



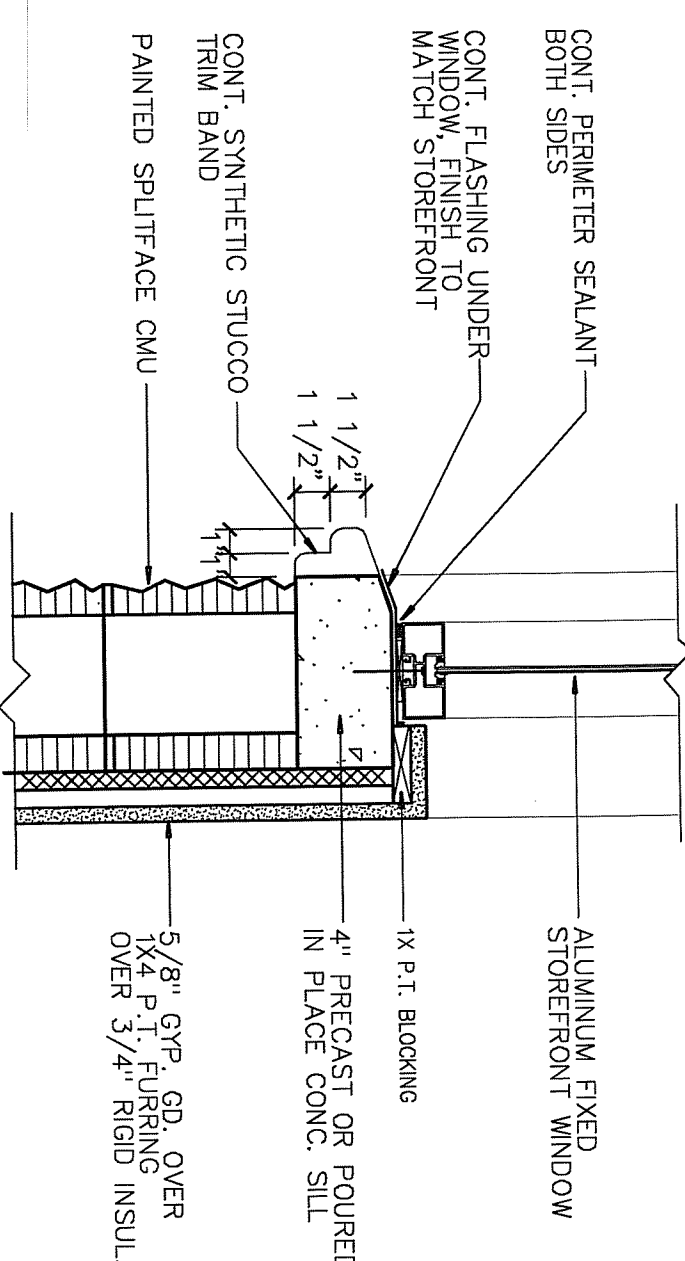
STOREFRONT WINDOW HEAD
1 1/2"=1'-0"

4
A8



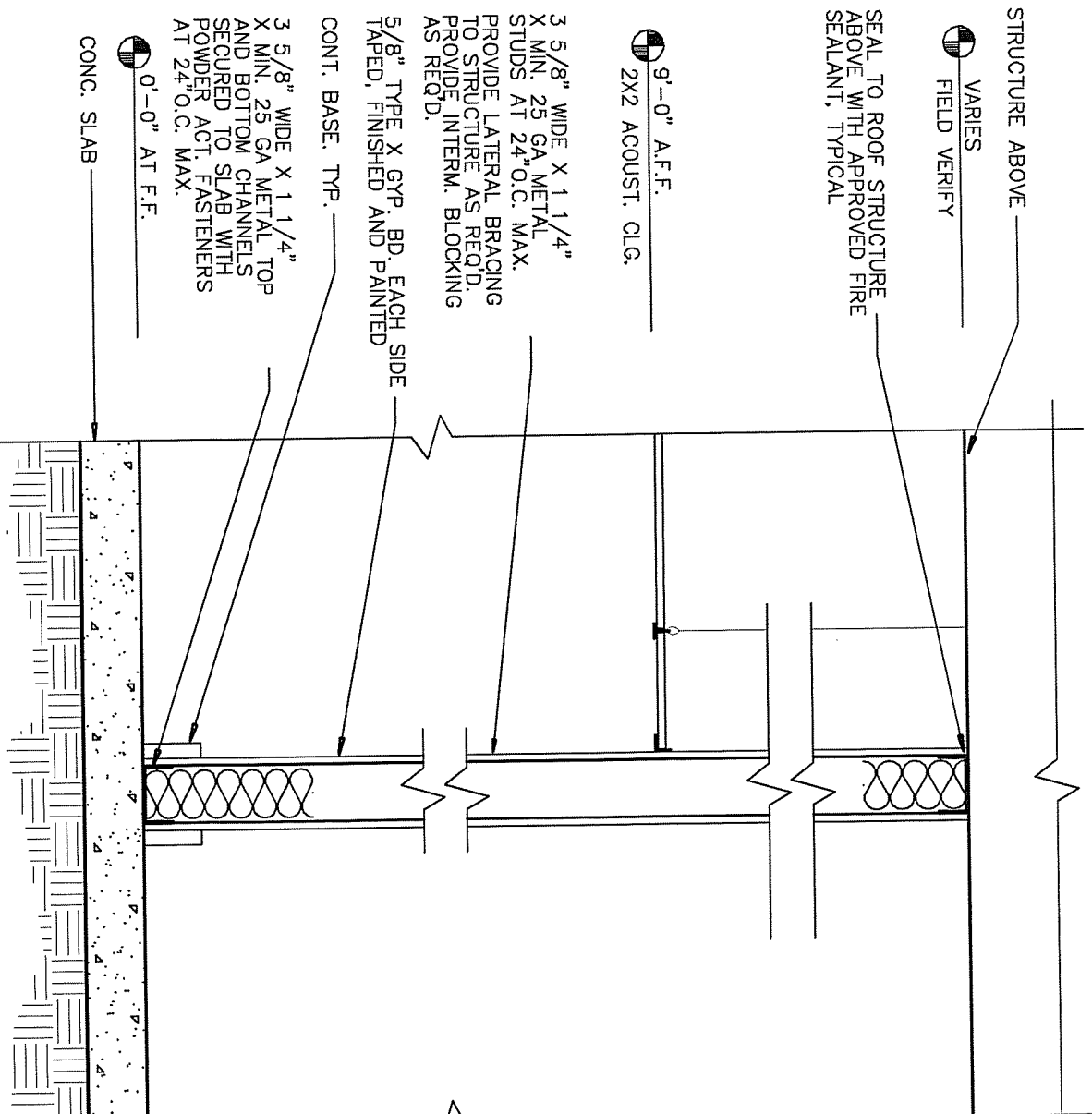
STOREFRONT WINDOW JAMB
1 1/2"=1'-0"

3
A8



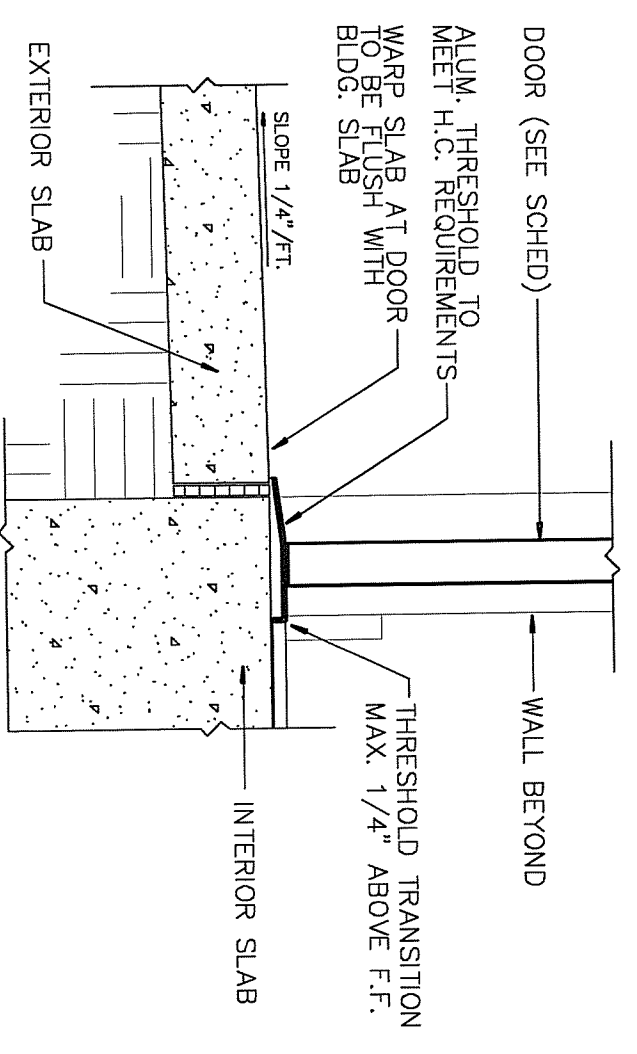
STOREFRONT WINDOW SILL
1 1/2"=1'-0"

2
A8



SEE UL DETAIL V417 FOR RATED WALL SPECIFICATIONS
TYPICAL 1-HOUR-FIRE RATED WALL SECTION
1 1/2"=1'-0"

7
A8



EXTERIOR THRESHOLD DETAIL
1 1/2"=1'-0"

1
A8

COPYRIGHTS: RICARDO CAVALLINO AND ASSOC., INC. © 2007 ALL RIGHTS RESERVED

NEM COMMERCIAL BUILDING AT
CELLON CREEK COMMERCE PARK
U.S. HWY 441, ALACHUA, FLORIDA

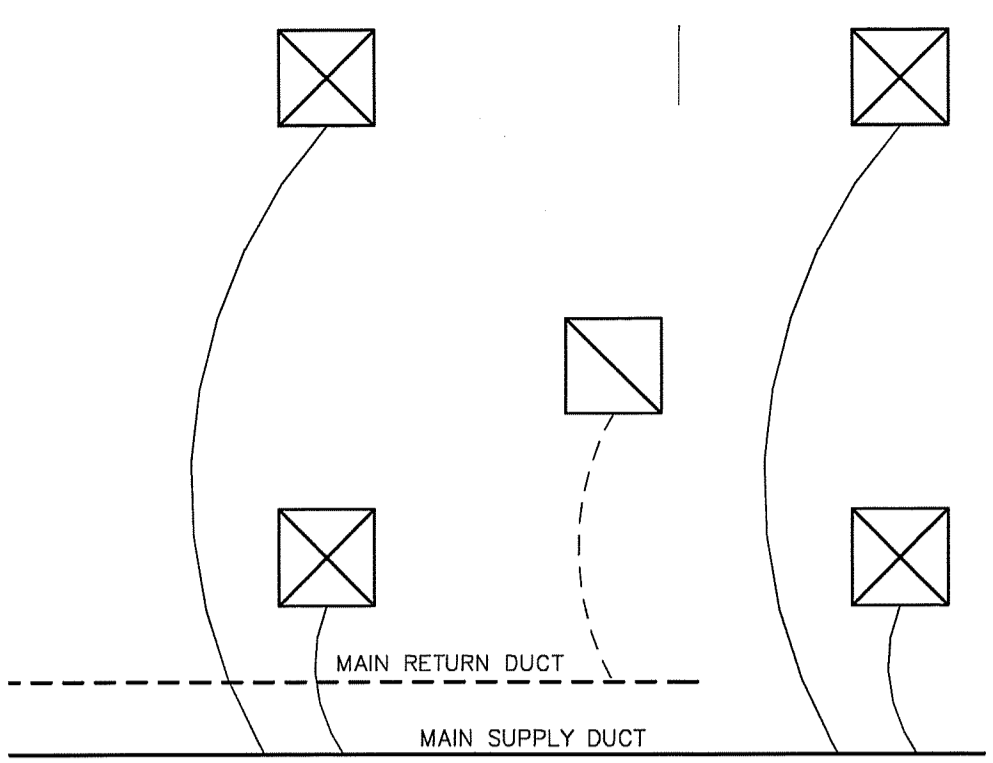
RICARDO CAVALLINO AND ASSOCIATES, INC.
ARCHITECTURE-PLANNING AA 002865
22 SE 5TH AVENUE 352-377-1751 (O)
GAINESVILLE, FL 32601 352-377-1765 (F)



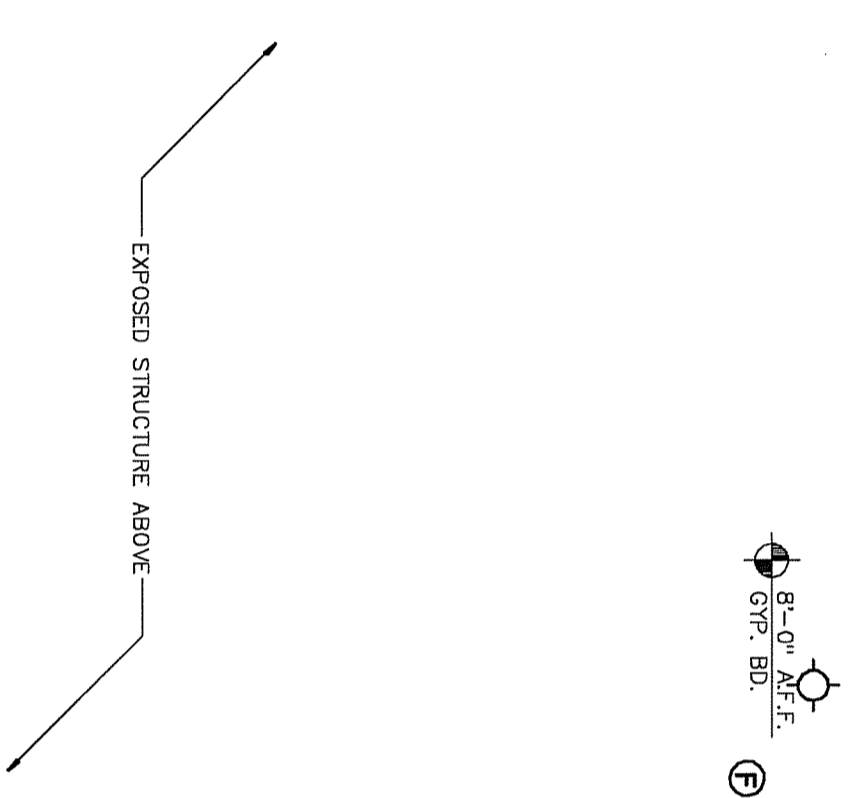
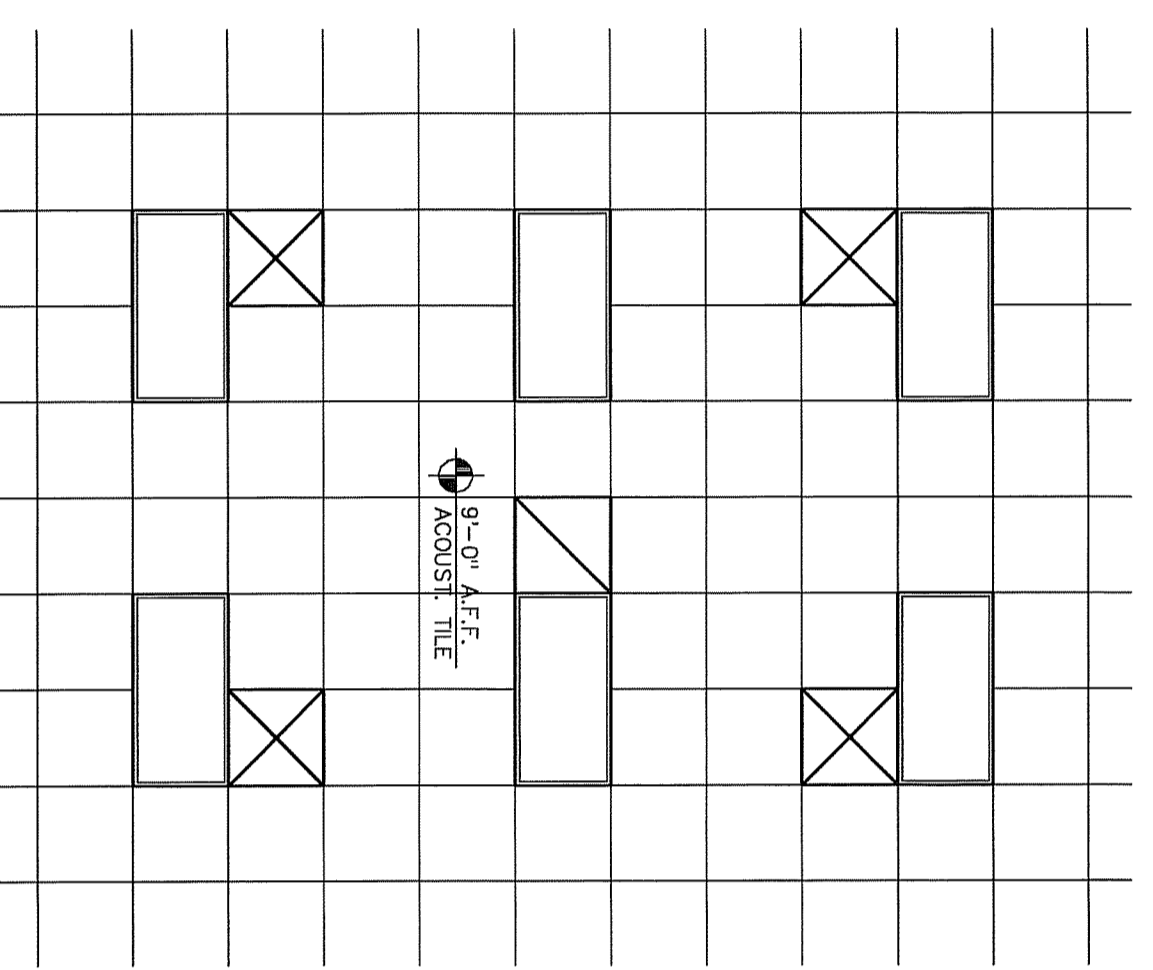
A8

PROJECT: RCA-0624
DRAWN BY: J.W.S.
CHECKED: R.C.
DATE: 1-26-2007

REVISED:



LEGEND
 □ 2x2 SUPPLY GRILL
 □ 2x2 RETURN



TYPICAL UNIT MECHANICAL PLAN
 1/4"=1'-0"

TYPICAL UNIT REFLECTED CEILING PLAN
 1/4"=1'-0"

TYPICAL UNIT ELECTRICAL PLAN
 1/4"=1'-0"

ELECTRICAL LEGEND

- DUPLEX RECEPTACLE OUTLET 18" HEIGHT ABOVE FINISH FLOOR
- QUAD RECEPTACLE OUTLET
- OUTLET ON DEDICATED CIRCUIT
- PHONE OUTLET
- ▲ DUPLEX PHONE DATA OUTLET
- CABLE TELEVISION OUTLET
- EXHAUST FAN
- ⊙ SMOKE DETECTOR
- ⊙ CABLE TV JUNCTION BOX MOUNT BELOW FIRST SHELF
- ⊙ PHONE JUNCTION BOX MOUNT BELOW FIRST SHELF
- ⊙ SWITCH WITH DIMMER
- ELECTRICAL PANEL
- ELECTRICAL METER
- ELECTRICAL DISCONNECT
- ⊙ ILLUMINATED EXIT SIGN WITH BATTERY BACKUP
- ⊙ EXTENSION SADDLE WITH WALL MOUNTED LIGHT FIXTURE
- CEILING MOUNTED LIGHT FIXTURE
- RECESSED LIGHT FIXTURE
- EXTERIOR GROUND W.P. LIGHT FIXTURE
- CEILING MOUNTED LIGHT FIXTURE/ EXHAUST FAN COMBINATION
- EXTERIOR GROUND W.P. LIGHT FIXTURE
- SCENIC LIGHT FIXTURE
- EXTERIOR FLOOR LIGHT WITH MOTION DETECTOR
- 2'-4" FLUORESCENT FIXTURE 3'-6" SURFACE MOUNTED SIPS = SUSPENDED
- ⊙ CEILING FAN/ LIGHT COMBINATION FROM CEILING
- ⊙ GROUND FAULT INTERRUPTER
- ⊙ GFI WATER PROOF
- ⊙ ALL RECEPTACLES AND PLATES TO BE WHITE

ELECTRICAL LOAD CALCULATIONS

LOAD CALC. PER UNIT (1,200 S.F.)

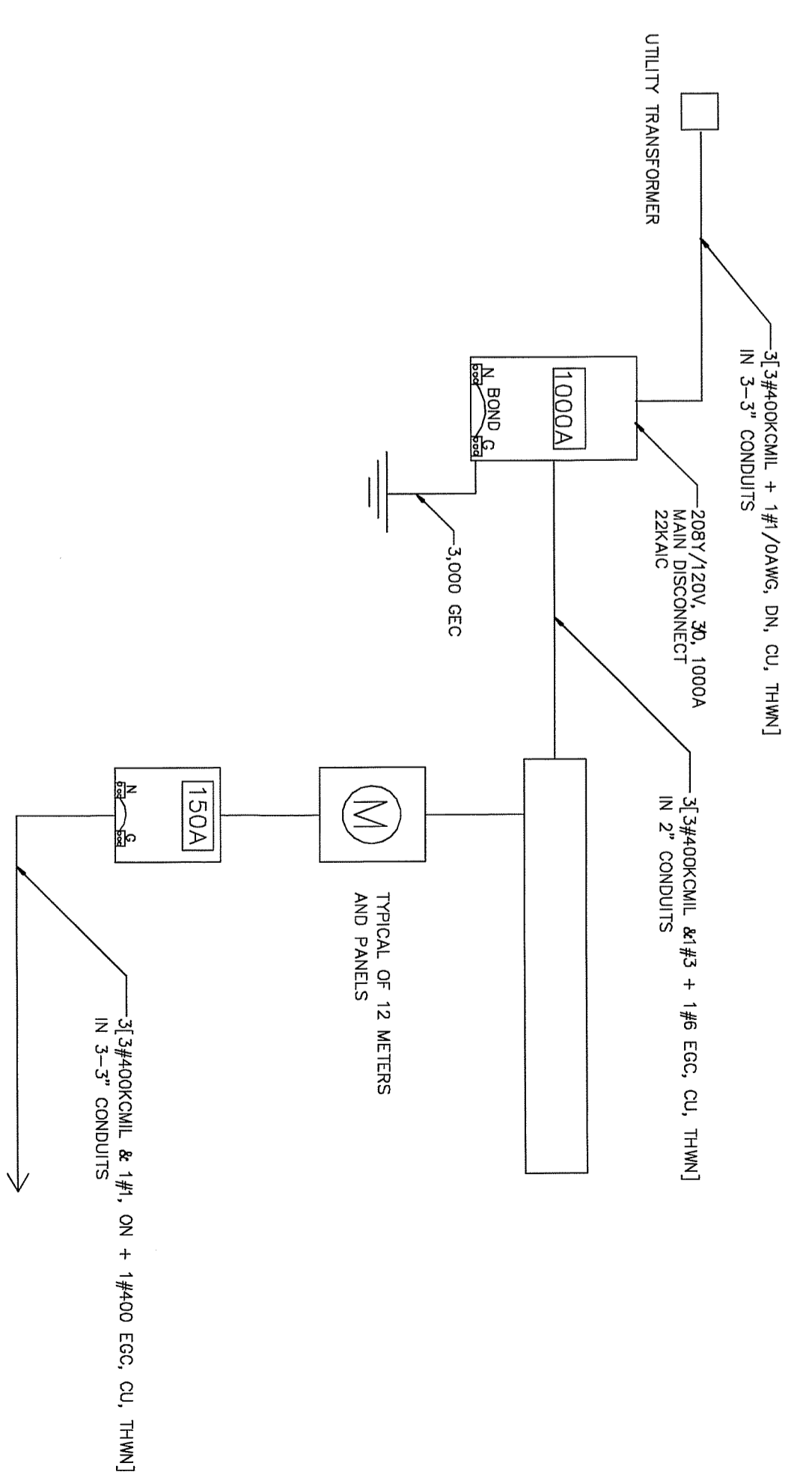
GEN. LIGHTING + RECP. (1200 x 3.5 VA/SF)	4.20 KVA
OFFICE EQUIP.	2.00 KVA
REFRIGERATOR	0.50 KVA
SHOP EQUIP. HEAT (3KW HEAT)	5.25 KVA
SHOP EQUIP.	15.00 KVA
LARGEST MOTOR (COD) x 0.25	0.50 KVA
TOTAL	27.2 KVA
@208V/120V 3Ø	75 AMPS

LOAD CALC. PER UNIT (1,800 S.F.)

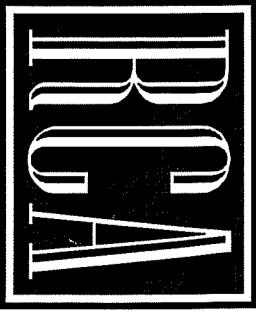
GEN. LIGHTING + RECP. (1800 x 3.5 VA/SF)	6.3 KVA
OFFICE EQUIP.	3.00 KVA
REFRIGERATOR	1.20 KVA
AHU + COU + HEAT (5KW HEAT)	8.50 KVA
SHOP EQUIP.	18.50 KVA
LARGEST MOTOR (COD) x 0.25	0.75 KVA
TOTAL	36.25 KVA
@208V/120V 3Ø	109 AMPS

TOTAL FOR BUILDING

(11 x 272) + 38.25	337.5 KVA
@208V/120V 3Ø	938 AMPS



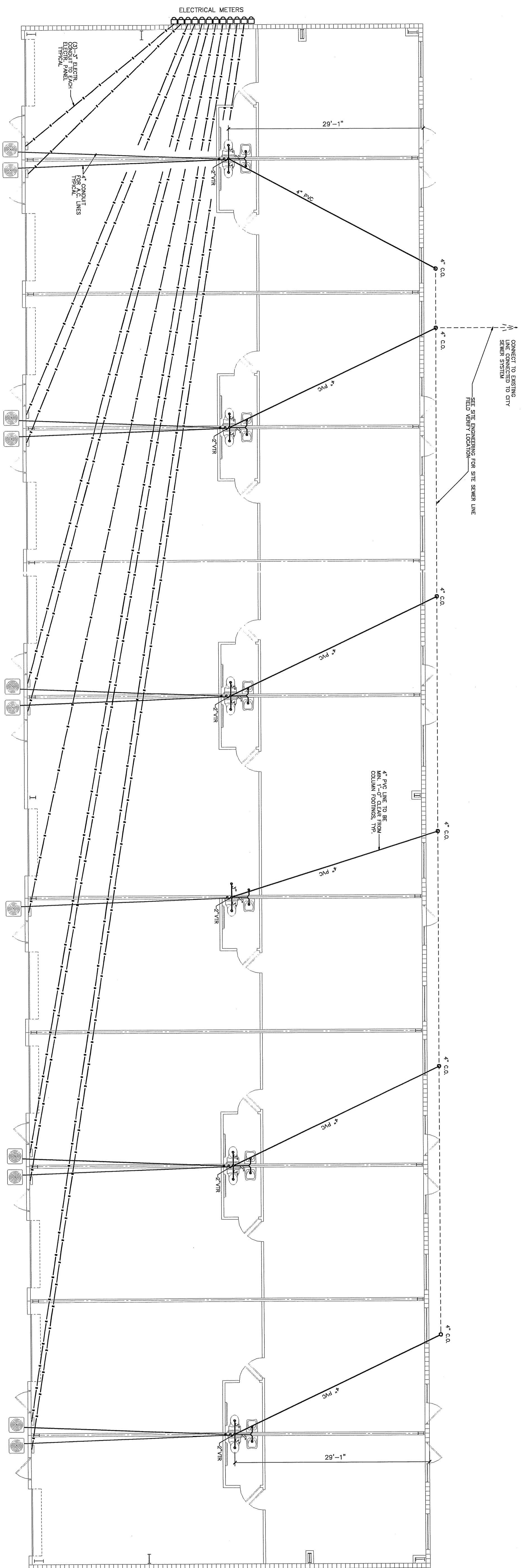
ELECTRICAL RISER DIAGRAM (FOR 3 PHASE SERVICE)
 N.T.S.
 © 2007 ALL RIGHTS RESERVED



RICARDO CAVALLINO AND ASSOCIATES, INC.
 ARCHITECTURE-PLANNING AA 002865
 22 SE 5TH AVENUE GAINESVILLE, FL 32601
 352-377-1751 (O) 352-377-1765 (F)

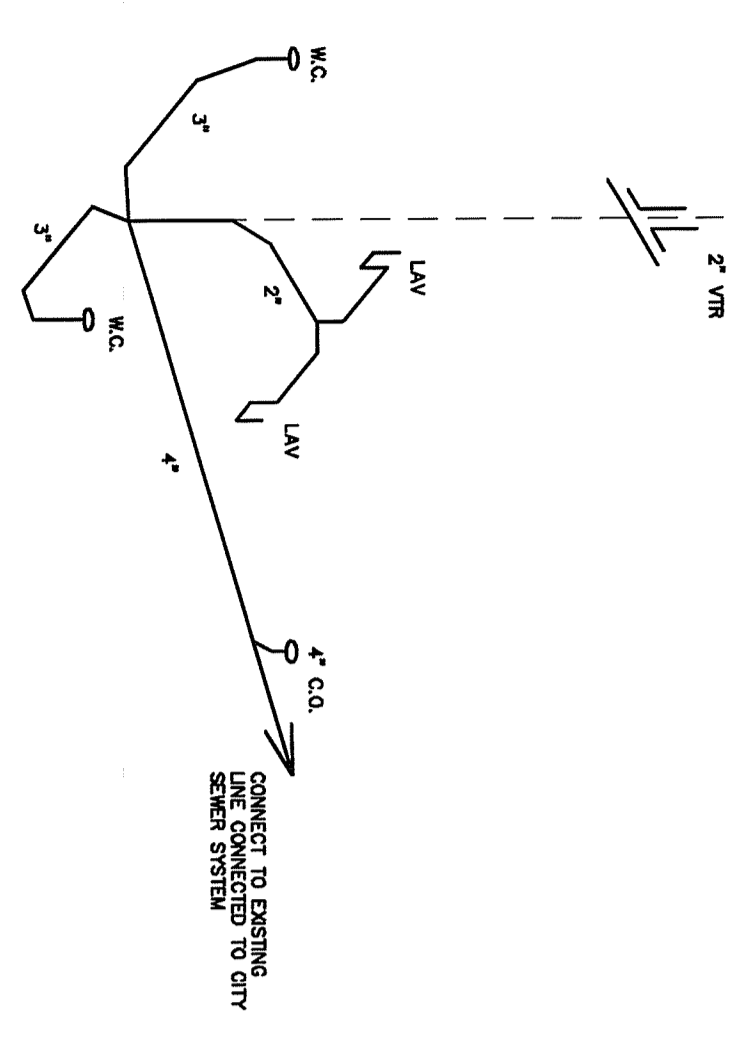
NEW COMMERCIAL BUILDING AT CELLON CREEK COMMERCE PARK
 U.S. HWY 441, ALACHUA, FLORIDA

REVISED:
 PROJECT: RCA-0524
 DRAWN BY: J.W.S.
 CHECKED: R.C.
 DATE: 1-28-2007
A9



BUILDING PLUMBING / ELECTRICAL PLAN
1/8" = 1'-0"

TYPICAL PLUMBING RISER DIAGRAM
N.T.S.



REVISED:	
PROJECT: RCA-0624	
DRAWN BY: J.W.S.	
CHECKED: R.C.	
DATE: 1-26-2007	

A10

NEW COMMERCIAL BUILDING AT
CELLON CREEK COMMERCE PARK
 U.S. HWY 441, ALACHUA, FLORIDA

RICARDO CAVALLINO AND ASSOCIATES, INC.
 ARCHITECTURE-PLANNING AA 002865
 22-SE 5TH AVENUE GAINESVILLE, FL 32601 352-377-1751 (O)
 352-377-1765 (F)

