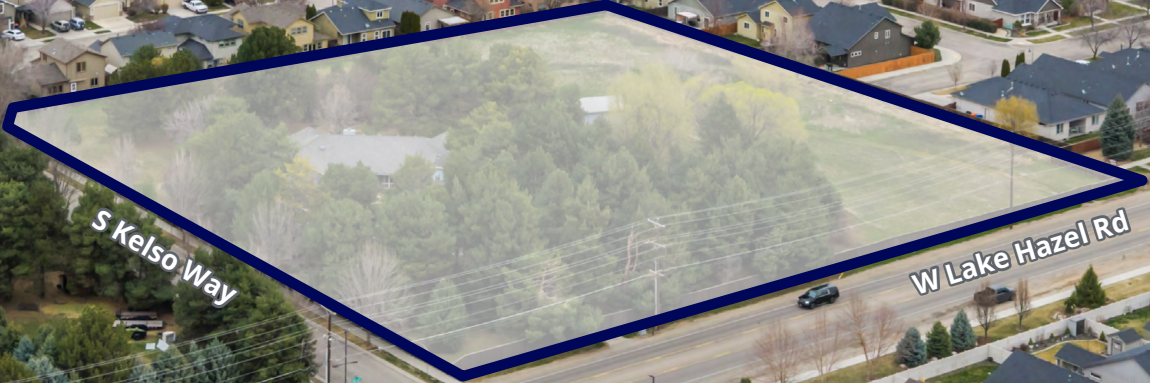




Downtown Boise



1,200 VPD

Land For Sale

10310 W Lake Hazel & 6150 S Kelso
Boise, Idaho



Watch Aerial Tour

Jimmy Roumanis
Land & Development Services | Partner
+1 208 908 8998
jimmy.roumanis@colliers.com

Erik Forgione
Land & Investment Services
+1 208 918 2805
erik.forgione@colliers.com

Property Overview

Property Highlights

- 23 Retail locations within walking distance
- Desirable Boise Infill Development Land
- Compact Residential Future Land Use | 6-15 units per acre
- Moratorium lifted for Southwest Ada County Alliance Sewer Connections for properties in Boise's area of impact

Asking Price

\$2,500,000

Property Details

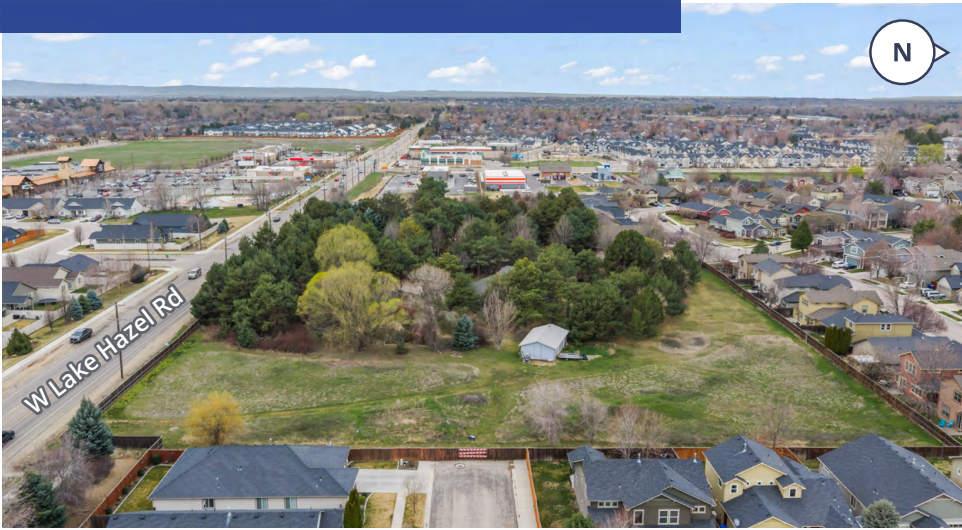
Address	10310 W Lake Hazel Rd & 6150 S Kelso Way, Boise, ID 83709
Property Type	Development land
Land Size	3.595 Acres
Zoning	RSW - Future Land Use is Compact Residential
Parcels	S1135336540, S1135336560



Demographics

	1 mile	3 Miles	5 Miles
Population	14,531	58,283	126,286
Households	5,147	20,441	47,308
Avg. HH Income	\$115,012	\$140,967	\$130,801

Property Gallery



Nearby Retailers



W Lake Hazel Rd

S Kelso Way

Site

Location

 Google Map

 Street View



755 West Front Street, Suite 300
Boise, Idaho 83702
+1 208 345 9000
colliers.com/idaho

This document has been prepared by Colliers for advertising and general information only. Colliers makes no guarantees, representations or warranties of any kind, expressed or implied, regarding the information including, but not limited to, warranties of content, accuracy and reliability. Any interested party should undertake their own inquiries as to the accuracy of the information. Colliers excludes unequivocally all inferred or implied terms, conditions and warranties arising out of this document and excludes all liability for loss and damages arising there from. This publication is the copyrighted property of Colliers and /or its licensor(s). © 2026. All rights reserved. This communication is not intended to cause or induce breach of an existing listing agreement. Colliers Paragon, LLC.