

1631 SW COLUMBIA ST

Portland, OR 97201

FOR LEASE



RETAIL BUILDING FOR LEASE

PROPERTY OVERVIEW

- RBA: ±10,953 SF
- Divisible: Yes — multiple suite options
- Year Built: 1953
- Zoning: CX
- Parking: ± 45 on-site surface stalls (≈2.79/1,000 SF)
- Walk Score: 94
- Access: Multiple exterior entries with ADA ramp

HIGHLIGHTS

- On-site parking in a close-in SW location (rare at this size)
- Single-story, walk-up access—easy circulation for staff and visitors
- Flexible floor plan for clinic/community hub, nonprofit/admin, education/training, or creative office (tenant to verify uses)
- Multiple entries allow easy demising into smaller suites
- Transit-rich location; steps to bus/MAX and neighborhood amenities
- Existing pole/monument signage with opportunity for branding upgrades



For more information or a property tour, please contact:

MATT LYMAN

503.225.8454 (o) | 503.507.4880 (c)

MattL@norris-stevens.com

LUIS MARTIN DEL CAMPO

503.416.8422

LuisM@norris-stevens.com

Norris & Stevens

INVESTMENT REAL ESTATE SERVICES



Information contained herein has been obtained from others and considered to be reliable; however, a prospective purchaser or lessee is expected to verify all information to their own satisfaction.

900 SW 5th Avenue • 17th Floor • Portland, OR 97204
503.223.3171 • norris-stevens.com

1631 SW COLUMBIA ST

Portland, OR 97201

FOR LEASE

PROPERTY PHOTOS



For more information or a property tour, please contact:

MATT LYMAN

503.225.8454 (o) | 503.507.4880 (c)

MattL@norris-stevens.com

LUIS MARTIN DEL CAMPO

503.416.8422

LuisM@norris-stevens.com



Information contained herein has been obtained from others and considered to be reliable; however, a prospective purchaser or lessee is expected to verify all information to their own satisfaction.

Norris & Stevens

INVESTMENT REAL ESTATE SERVICES

900 SW 5th Avenue • 17th Floor • Portland, OR 97204
503.223.3171 • norris-stevens.com

1631 SW COLUMBIA ST

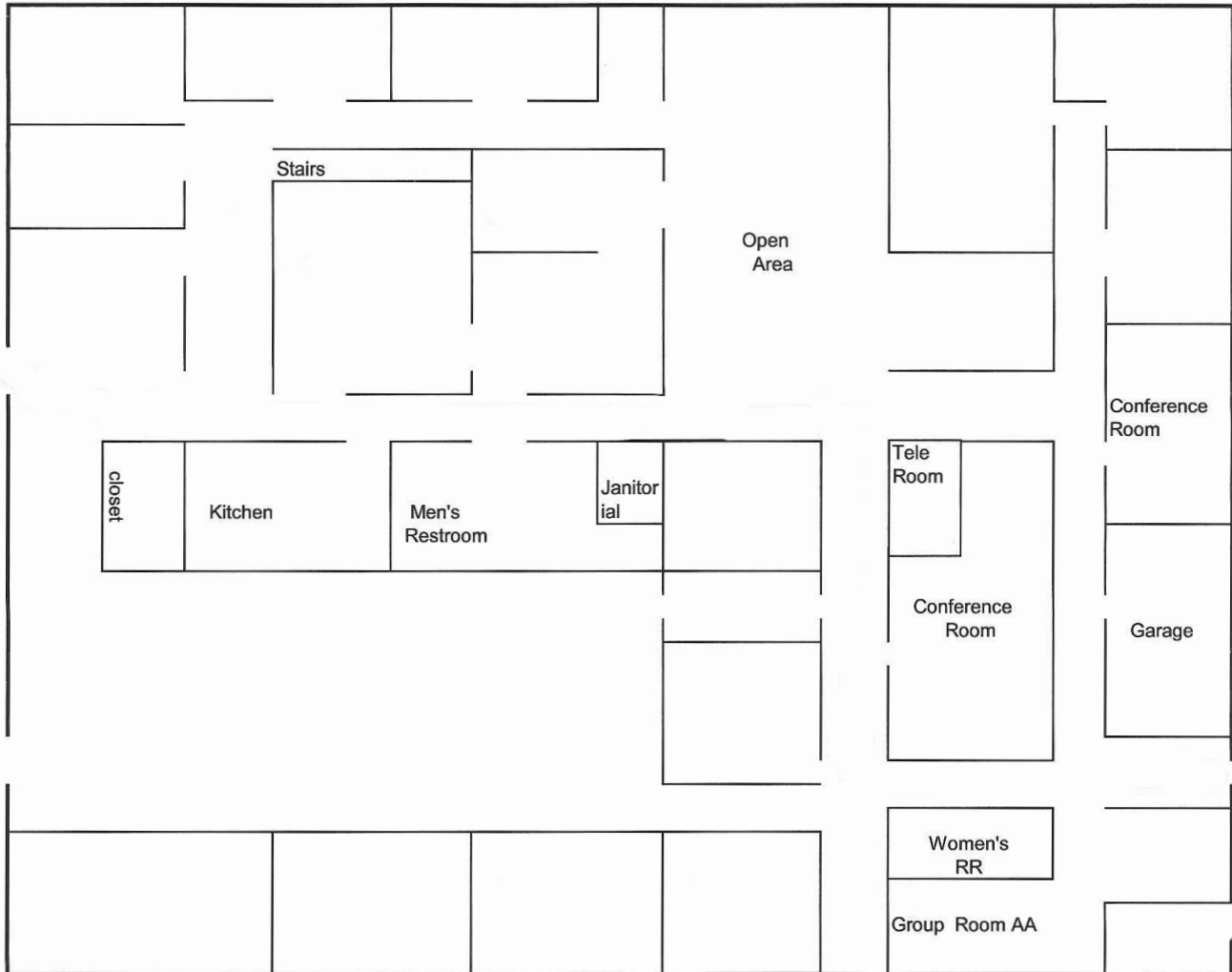
Portland, OR 97201

FOR LEASE

FLOOR PLAN

1631 SW COLUMBIA STREET, PORTLAND

10,953 FSF



For more information or a property tour, please contact:

MATT LYMAN

503.225.8454 (o) | 503.507.4880 (c)

MattL@norris-stevens.com

LUIS MARTIN DEL CAMPO

503.416.8422

LuisM@norris-stevens.com

Norris & Stevens

INVESTMENT REAL ESTATE SERVICES



Information contained herein has been obtained from others and considered to be reliable; however, a prospective purchaser or lessee is expected to verify all information to their own satisfaction.

900 SW 5th Avenue • 17th Floor • Portland, OR 97204
503.223.3171 • norris-stevens.com