

Now Available
For Sale
or Lease

251,909 SF
Industrial Facility
O'Hare

Contact

Joe Bronson

+1 630 317 0725

jbronson@hiffman.com

Eric Tresslar

+1 630 693 0650

etresslar@hiffman.com

Paddy Dwyer

+1 630 317 0794

pdwyer@hiffman.com

Patrick Clifford

+1 630 317 0753

pclifford@hiffman.com

One Oakbrook Terrace
Suite 400

Oakbrook Terrace, Illinois 60181

+1 630 932 1234

hiffman.com

Industrial Facility in DuPage County O'Hare

1455 W Thorndale Avenue - Itasca, Illinois 60143

PROPERTY HIGHLIGHTS

Industrial facility in O'Hare submarket ready for immediate occupancy. Quick access to I-290 and I-390. Drive time to future west cargo entrance at O'Hare is 10 minutes. Located in DuPage County.



22 INTERIOR DOCKS
& 3 DIDS



24'
CEILING HEIGHT



14,000 SF
OFFICE



HEAVY CAR PARKING
OF 132 CAR STALLS



0.5 MILES TO
I-290 and I-390

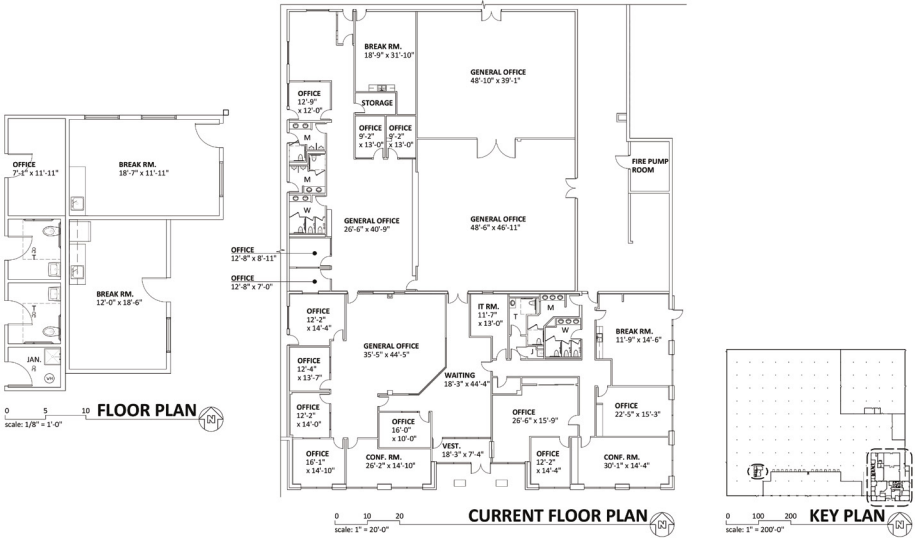


10 MINUTES TO
O'HARE AIRPORT

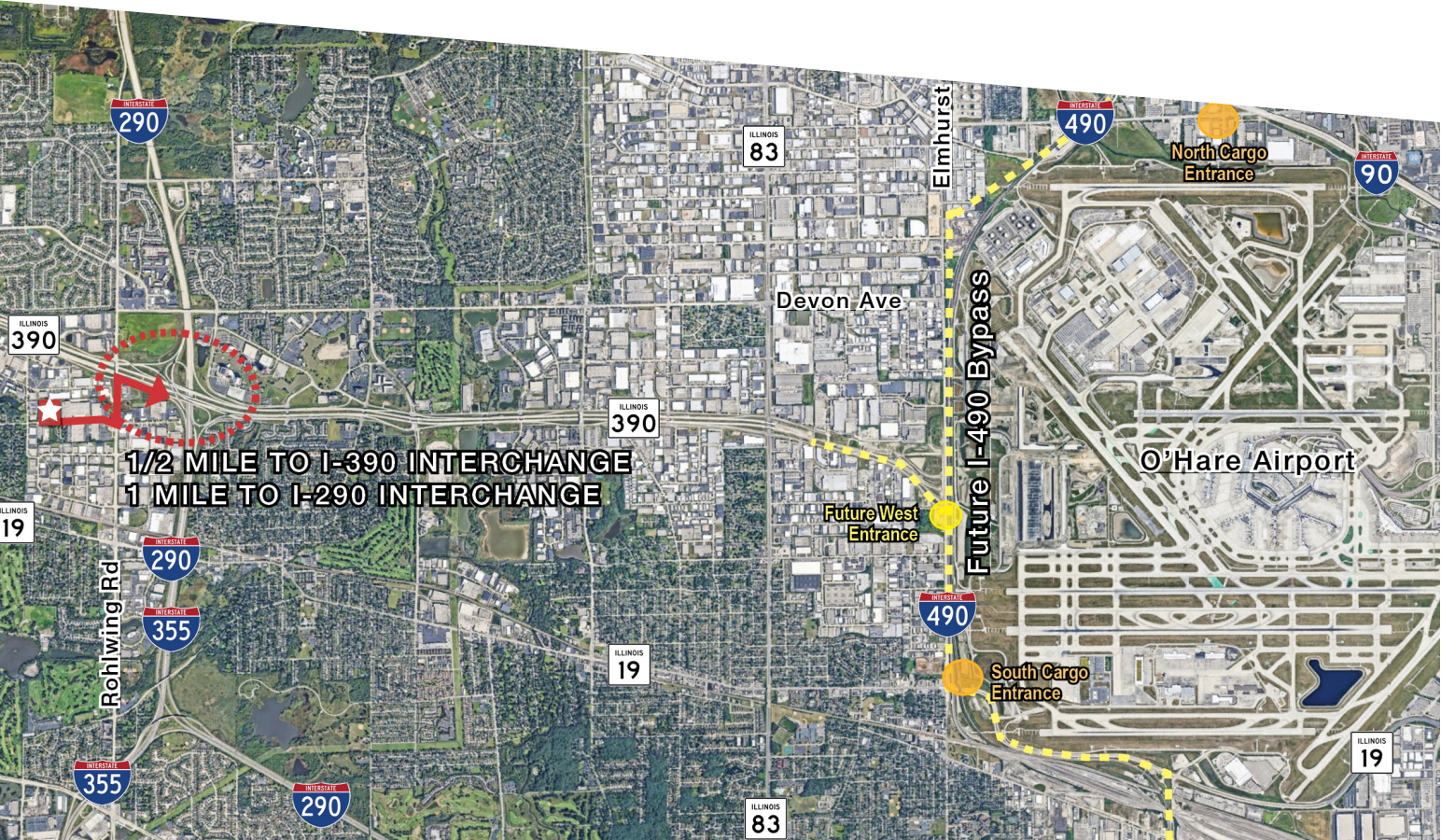
NO WARRANTY OR REPRESENTATION, EXPRESS OR IMPLIED, IS MADE AS TO THE ACCURACY OF THE INFORMATION CONTAINED HEREIN, AND THE SAME IS SUBMITTED SUBJECT TO ERRORS, OMISSIONS, CHANGE OF PRICE, RENTAL OR OTHER CONDITIONS, PRIOR SALE, LEASE OR FINANCING, OR WITHDRAWAL WITHOUT NOTICE, AND OF ANY SPECIAL LISTING CONDITIONS IMPOSED BY OUR PRINCIPALS NO WARRANTIES OR REPRESENTATIONS ARE MADE AS TO THE CONDITION OF THE PROPERTY OR ANY HAZARDS CONTAINED THEREIN ARE ANY TO BE IMPLIED.

1455 W THORNDALE AVENUE - ITASCA, ILLINOIS | FOR SALE OR LEASE

BUILDING	251,909 SF
LAND AREA	±9.90 Acres
CLEAR HEIGHT	24’
OFFICE AREA	14,000 SF (Landlord willing to pull back)
LOADING	22 Interior Docks 3 Drive-In Doors
CAR PARKING	132 Stalls
POWER	1,200 Amps, 480 Volts
SPRINKLER	ESFR
LIGHTING	LED
LEASE RATE	Subject to Offer



Pictured: Floor Plan

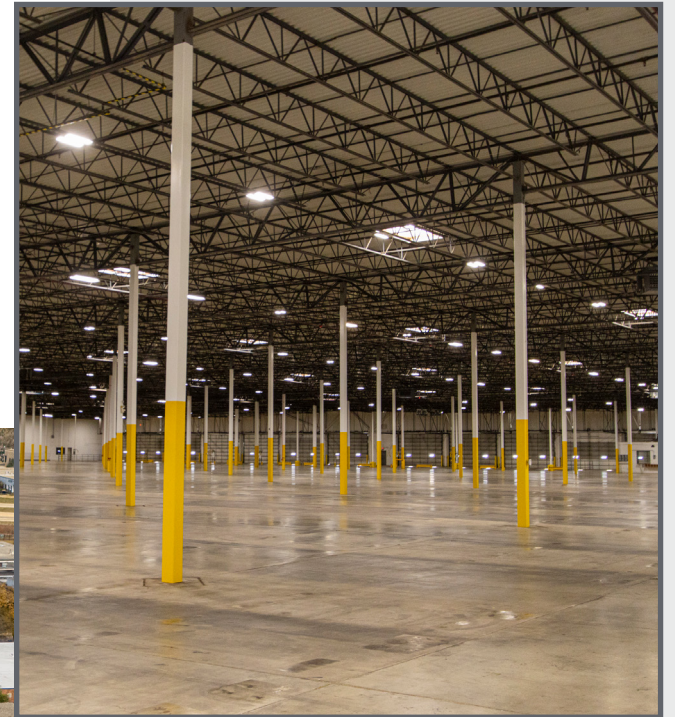


DRIVE TIMES/MILEAGE

I-390	2min / 0.5miles
I-290	8min / 1.0miles
I-294	18min / 10miles
I-355	8min / 5miles
O'HARE WEST CARGO	10min / 5.5miles
DOWNTOWN CHICAGO	30min / 28miles

1455 W THORNDALE AVENUE - ITASCA, ILLINOIS | FOR SALE OR LEASE

This 251,909 SF warehouse is one of the largest buildings in the O'Hare and DuPage submarkets that offers rail capabilities. With 22 docks, 3 drive-in doors, 24' clear, finished office and heavy power, 1455 W Thorndale is a premier infill opportunity for a variety of users.



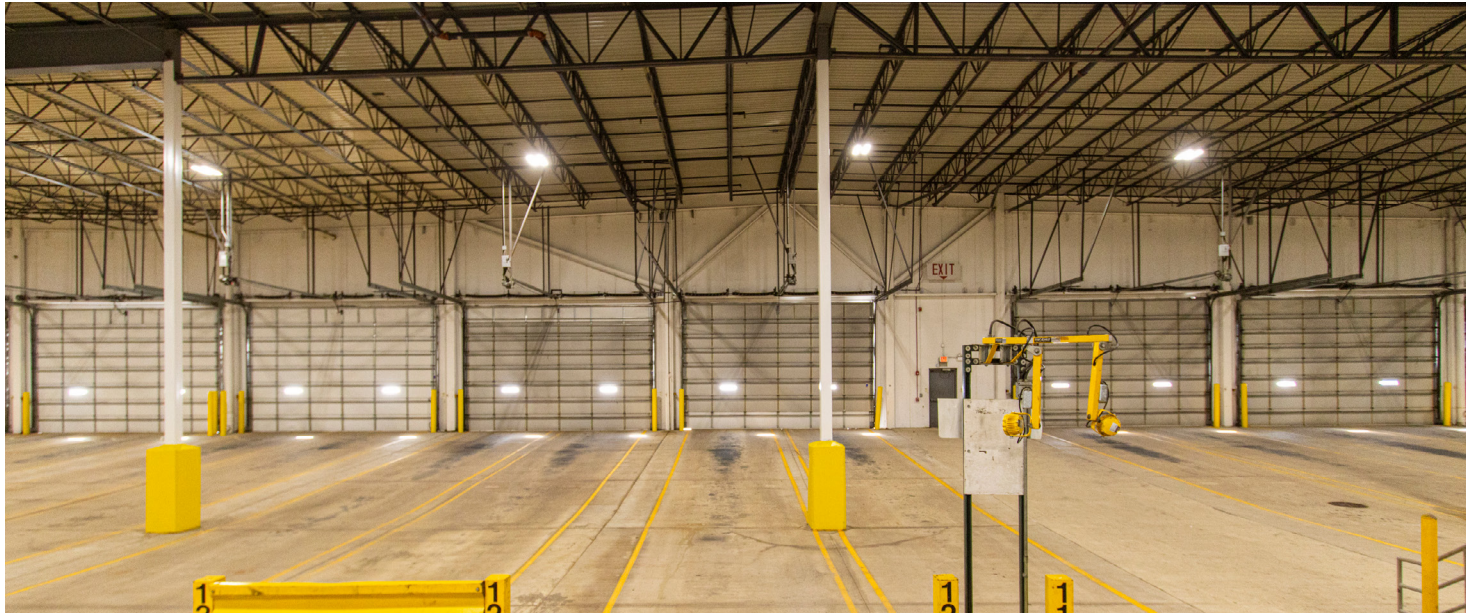
Pictured: Warehouse



MAKE-READY
IMPROVEMENTS
ARE UNDERWAY



1455 W THORNDALE AVENUE - ITASCA, ILLINOIS | FOR SALE OR LEASE



READY FOR
IMMEDIATE
OCCUPANCY



1455 W THORNDALE AVENUE - ITASCA, ILLINOIS | FOR SALE OR LEASE

LOCATION, LOCATION, LOCATION

O'Hare industrial facility with immediate access to I-390 via Route 53 located in DuPage County.



CALL A HIFFMAN BROKER TODAY!

Joe Bronson

+1 630 317 0725
jbronson@hiffman.com

Eric Tresslar

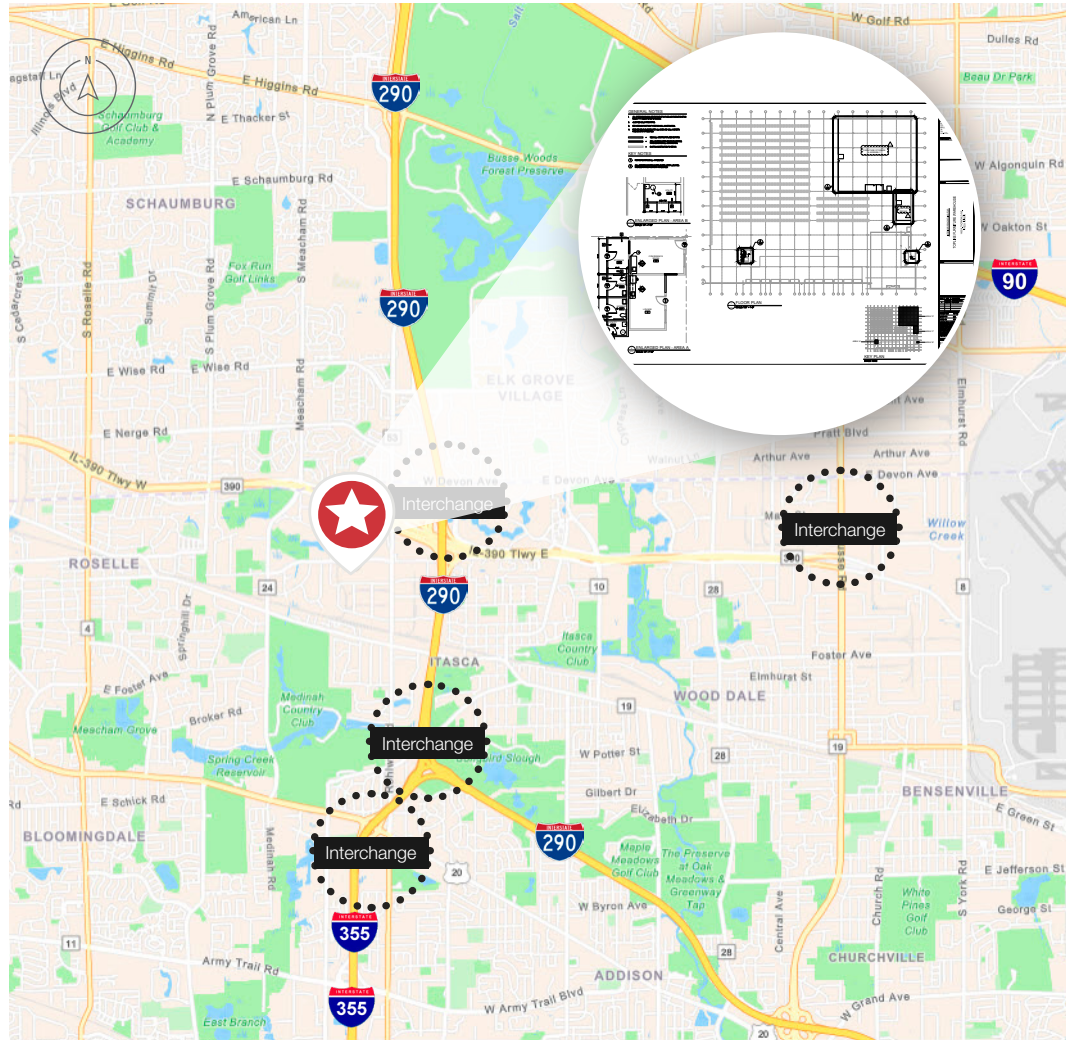
+1 630 693 0650
etresslar@hiffman.com

Paddy Dwyer

+1 630 317 0794
pdwyer@hiffman.com

Patrick Clifford

+1 630 317 0753
pclifford@hiffman.com



251,909 SF
AVAILABLE FOR
LEASE



22 INTERIOR DOCKS
& 3 DIDS



132 CAR STALLS



LOCATED IN
DUPAGE COUNTY



QUICK ACCESS TO
I-290 AND I-390



HIGH STREET
LOGISTICS PROPERTIES

NAL Hiffman

One Oakbrook Terrace
Suite 400
Oakbrook Terrace, Illinois 60181
+1 630 932 1234

hiffman.com