

www.grayce.us



 Texas Tech Physicians of EL PASO

# FOR LEASE

## Texas Tech Health Medical Building

2000 TRANSMOUNTAIN RD  
EL PASO TX 79911

up to 7,062 SF



**Sarah Dominguez**

President

915-433-0800

sarah@grayce.us

**Nadia Baem**

Commercial Agent

915-316-2345

nadia@grayce.us



## SITE AERIAL



## SITE SPECIFICATIONS

# of stories	4
Rates	\$21.00 PSF
Operating Expenses	\$10.82 PSF
Type of Business	Medical Office Building
Zoning	C-4
Building Class	A
Building Size	110,000 SF

AVAILABLE SPACE FOR LEASE

up to 7,062 SF

## PROPERTY INFORMATION

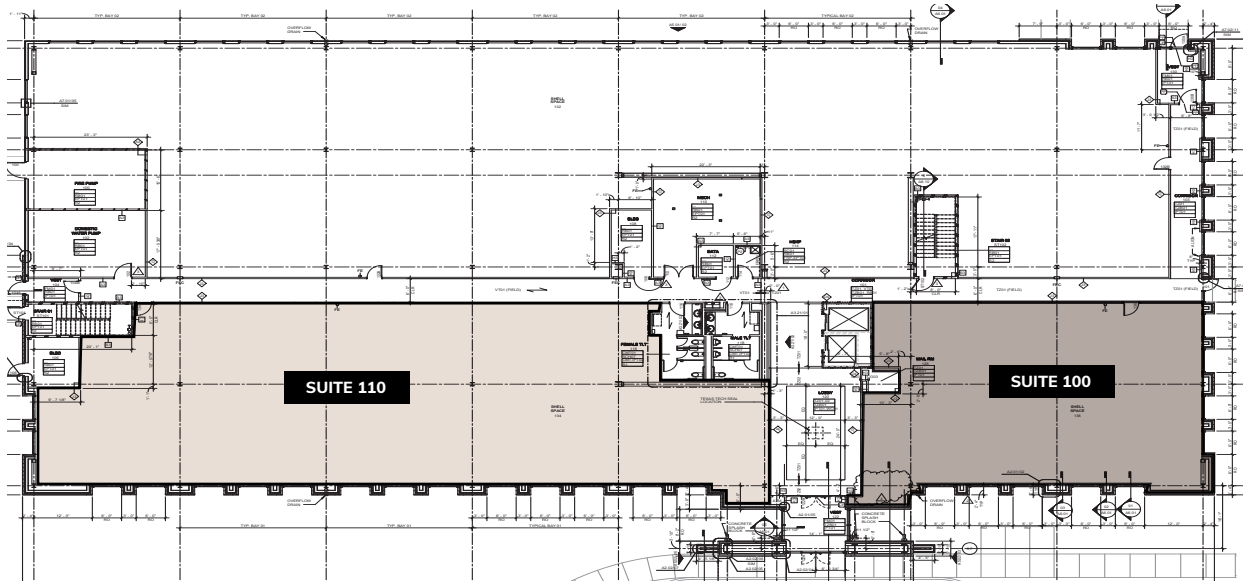
- **Class A** Medical office building.
- Located on the 2nd floor of the **Transmountain Medical Office Building**.
- Adjacent to the **The Hospital of Providence Transmountain Campus**.
- **Includes:** utilities, janitorial, five days a week, common area maintenance, property taxes & property insurance.



FOR LEASE 2000 Transmountain Rd., El Paso, TX, 79911

## FLOOR PLAN

### 1<sup>ST</sup> FLOOR



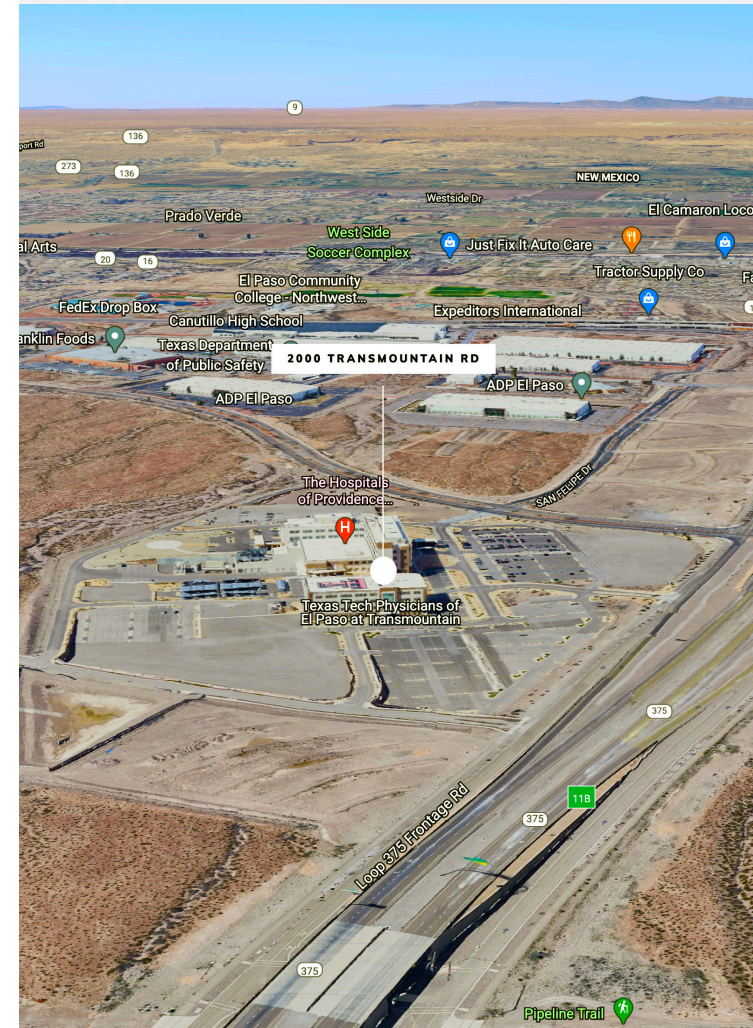
GRAYCE  
REAL ESTATE

## AVAILABILITY

### 1<sup>st</sup> Floor

- SUITE 100: 3,512 SF
- SUITE 110: 7,062 SF

## AERIAL



FOR LEASE 2000 Transmountain Rd., El Paso, TX, 79911

## FLOOR PLAN

### 2<sup>ND</sup> FLOOR

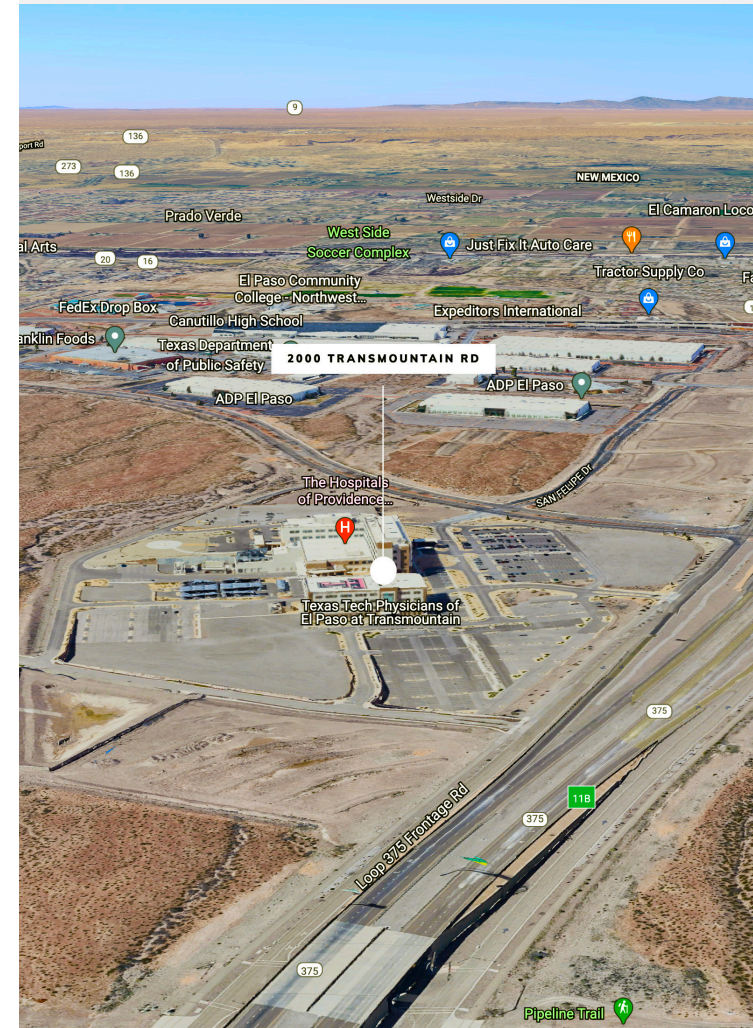


## AVAILABILITY

2<sup>nd</sup> Floor

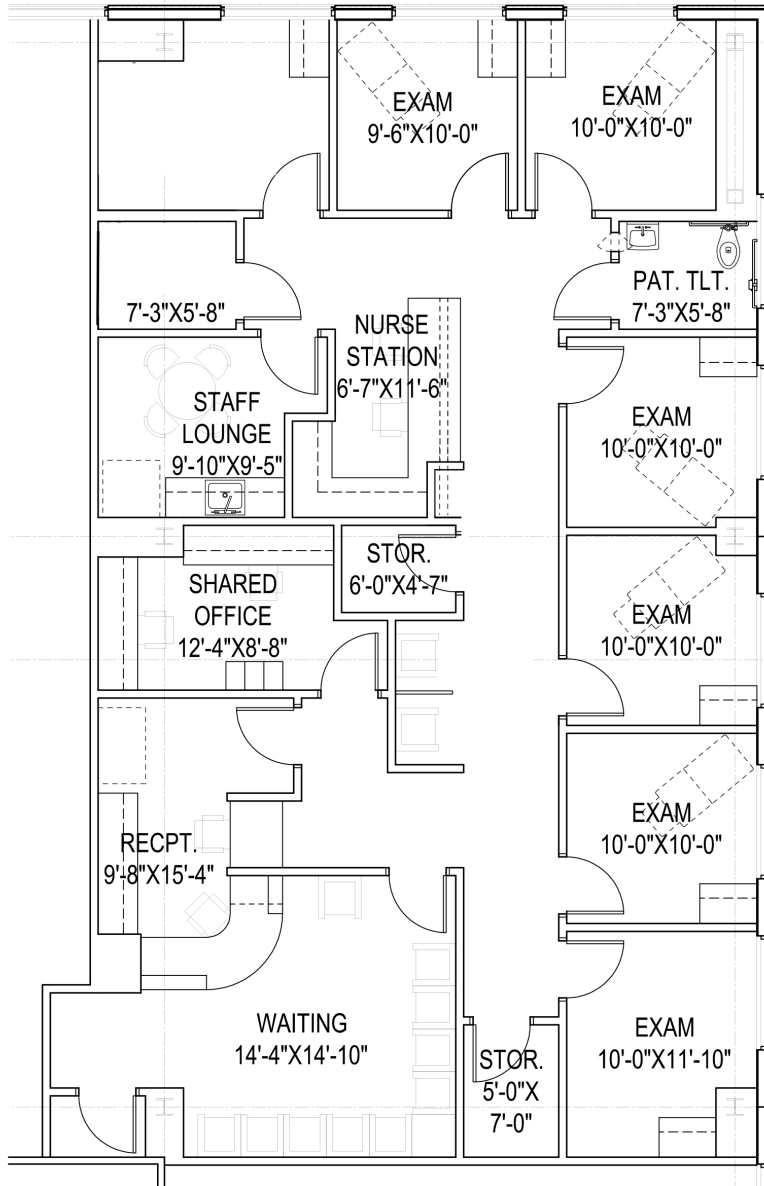
- SUITE 260: 2,455 SF

## AERIAL



FOR LEASE 2000 Transmountain Rd., El Paso, TX, 79911

## FLOOR PLAN



GRAYCE  
REAL ESTATE

## AVAILABILITY

2<sup>nd</sup> Floor

- SUITE 260: 2,455 SF

## AERIAL



www.grayce.us



 Texas Tech Physicians of EL PASO

# FOR LEASE

## Texas Tech Health Medical Building

2000 TRANSMOUNTAIN RD  
EL PASO TX 79911

up to 7,062 SF



**Sarah Dominguez**

President

915-433-0800

sarah@grayce.us

**Nadia Baem**

Commercial Agent

915-316-2345

nadia@grayce.us