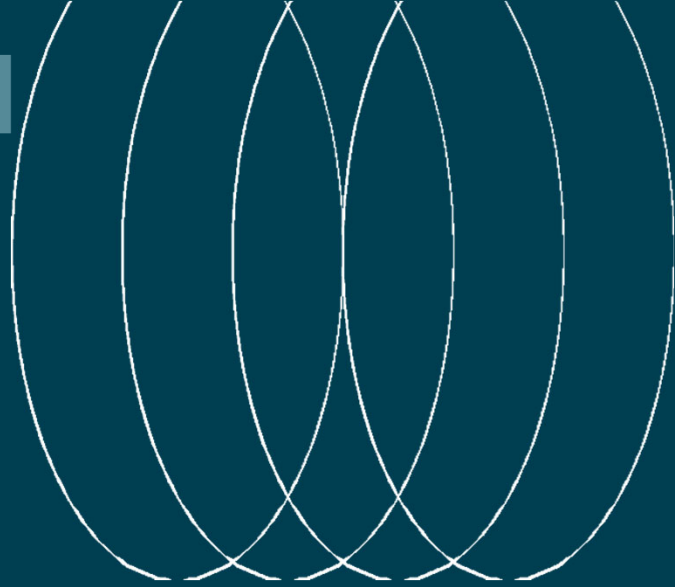


Medical / Office Space Available

For Sublease

466 Green Street NE
Gainesville, GA 30501



Total Available: 4,738 RSF
2 floors, each 2,369 SF

Available: Immediately

Term: Thru 12/31/2026

Building Highlights:

- Located near downtown Gainesville along well-traveled north-south connector
- Existing buildout suitable for medical practice or general office (professional services)
- Surface parking with 15 spaces + 1 designated handicap space

GET IN TOUCH

Jeremy Coppels, MCR, CCIM

E: Jeremy.Coppels@jll.com

C: 404 849 3575



Monument Signage



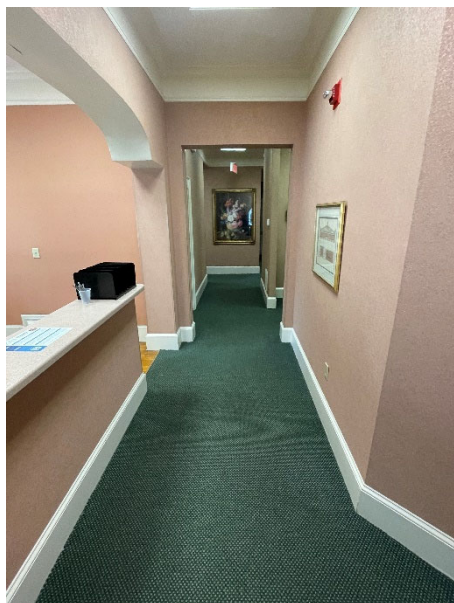
Reception / Waiting Area



Reception / Business Office



Open Office



Interior Corridor



Exam / Office Entry



Exam / Office #1



Exam / Office #2



Exam / Office #3



Nursing Station / Filing



Lab / Supply Room



Staff Break Area



Break & Conference Room



Office



Full Bathroom



IT / Storage Room