



LAND
SPACE AVAILABLE
±5 AC

2825 LOGANVILLE HWY

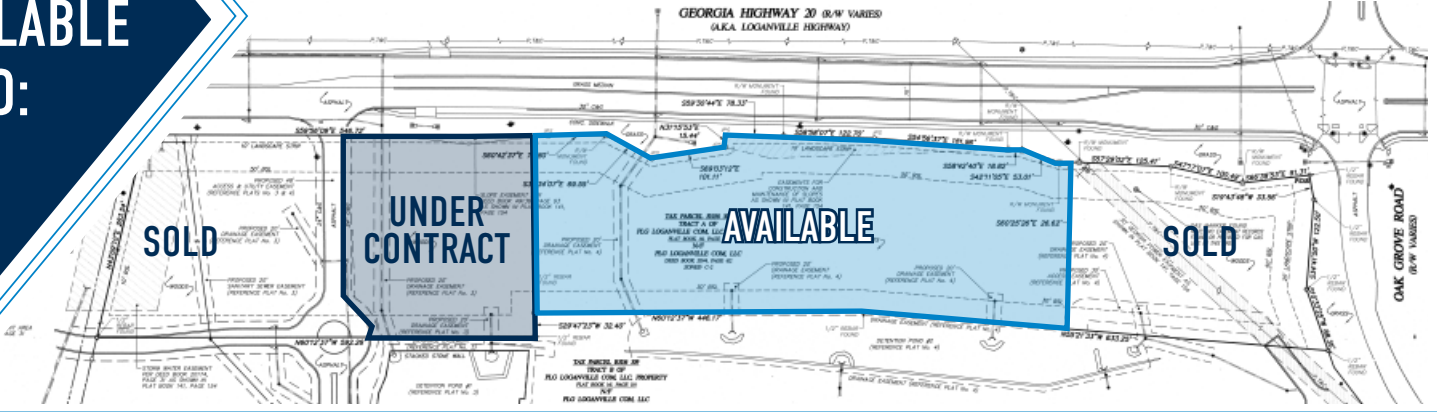
Loganville, GA 30052



404.252.1200 // www.skcr.com

900 Circle 75 Parkway #720, Atlanta, GA 30339

AVAILABLE LAND:



HIGHLIGHTS:

- » ±5 Acres
- » Zoning: C2
- » Over 1,400 feet of frontage
- » Traffic count: ~28,000 VPD
- » Close proximity to large master-planned community

CONTACT:

- » Keith Guthrie
Senior Vice President
404.790.7271
kguthrie@skcr.com
- » SK Commercial Realty
404.252.1200
www.skcr.com

