

OFFICE PROPERTY // FOR LEASE

160 - 1,415 SF AVAILABLE AT LIVONIA OFFICE COMPLEX WITH EXCELLENT I-96 ACCESS

33150 - 33200 SCHOOLCRAFT RD

LIVONIA, MI 48150



- Two-Building Office Complex: Professionally managed and well-maintained
- 160 - 1,415 SF Office suites available
- Perfect for growing companies, solo professionals, or satellite offices
- 24-Hour Access: Secure entry for tenants at any time
- Convenient entrances: Front and rear entry points for added accessibility
- Abundant parking available for tenants and visitors
- Prime Location: Situated along the I-96 Service Drive



P.A. COMMERCIAL
Corporate & Investment Real Estate

26555 Evergreen Road, Suite 1500
Southfield, MI 48076
248.358.0100
pacommercial.com

We obtained the information above from sources we believe to be reliable. However, we have not verified its accuracy and make no guarantee, warranty or representation about it. It is submitted subject to the possibility of errors, omissions, change of price, rental or other conditions, prior sale, lease or financing, or withdrawal without notice. We include projections, opinions, assumptions or estimates for example only, and they may not represent current, past or future performance of the property. You and your tax and legal advisors should conduct your own investigation of the property and transaction.

33150 - 33200 SCHOOLCRAFT RD, LIVONIA, MI 48150 // FOR LEASE

EXECUTIVE SUMMARY



Lease Rate

**\$300.00 -
1,880.00 PER
MONTH (FULL
SERVICE)**

OFFERING SUMMARY

Total Building Size:	29,584 SF
Available SF:	140 - 1,415 SF
Lot Size:	1.16 Acres
Year Built:	1975
Renovated:	1997
Zoning:	Office
Market:	Detroit
Submarket:	Southern I-275 Corridor
Traffic Count:	31,007

PROPERTY OVERVIEW

Nestled along the I-96 Service Drive, 33150 - 33200 Schoolcraft Rd is a professionally managed and well-maintained two-building office complex designed for convenience and accessibility. With 24-hour access, front and rear entrances, and abundant parking, this property provides an ideal setting for businesses seeking a seamless and professional work environment.

Currently, 33150 Schoolcraft Rd offers two spacious office suites ranging from 1,136 to 1,415 square feet, perfect for growing businesses or established professionals. Meanwhile, 33200 Schoolcraft Rd features one smaller office suite, 160 square feet, ideal for solo professionals or satellite offices. Don't miss the chance to secure your spot in this highly visible and convenient office complex!

LOCATION OVERVIEW

Great freeway access - conveniently located on the north side of the I-96 service drive of Schoolcraft Road, just east of Farmington Road.



P.A. COMMERCIAL
Corporate & Investment Real Estate

Matthew Schiffman CEO/MANAGING MEMBER
D: 248.281.9907 | C: 248.281.9907
matt@pacommercial.com

Billy Stacy ASSOCIATE
D: 248.663.0507 | C: 248.835.9801
billy@pacommercial.com

We obtained the information above from sources we believe to be reliable. However, we have not verified its accuracy and make no guarantee, warranty or representation about it. It is submitted subject to the possibility of errors, omissions, change of price, rental or other conditions, prior sale, lease or financing, or withdrawal without notice. We include projections, opinions, assumptions or estimates for example only, and they may not represent current, past or future performance of the property. You and your tax and legal advisors should conduct your own investigation of the property and transaction.

33150 - 33200 SCHOOLCRAFT RD, LIVONIA, MI 48150 // FOR LEASE

LEASE SPACES



LEASE INFORMATION

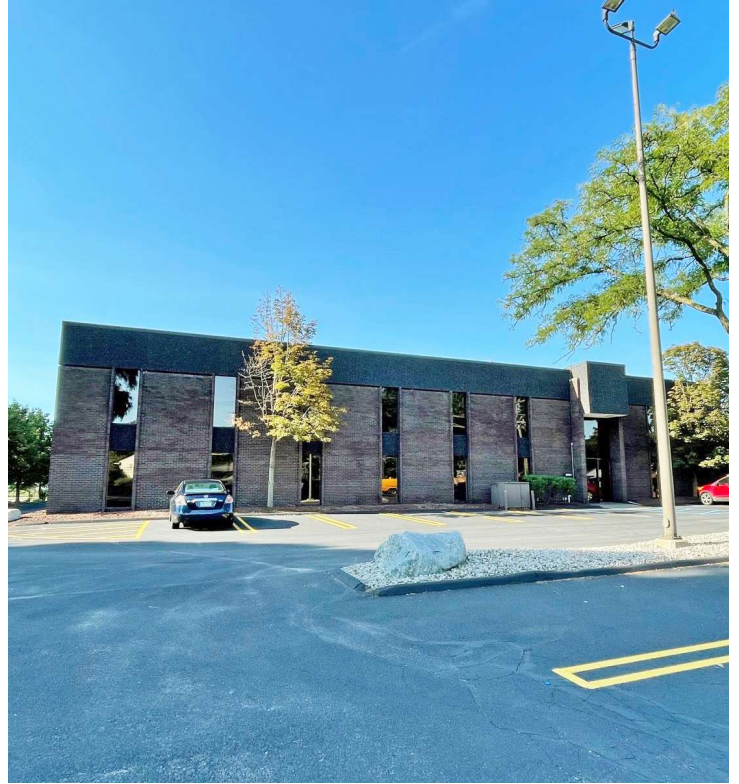
Lease Type:	Full Service	Lease Term:	Negotiable
Total Space:	140 - 1,415 SF	Lease Rate:	\$300.00 - \$1,880.00 per month

AVAILABLE SPACES

SUITE	TENANT	SIZE (SF)	LEASE TYPE	LEASE RATE
33150 Schoolcraft Rd, Suite 104	Available	1,415 SF	Full Service	\$1,880 per month
33200 Schoolcraft Rd, Suite 113	Available	140 SF	Full Service	\$400 per month
33200 Schoolcraft Rd, Suite L-01	Available	160 SF	Full Service	\$300 per month
33150 Schoolcraft Road, Suite 201	Available	626 SF	Full Service	\$832 per month

33150 - 33200 SCHOOLCRAFT RD, LIVONIA, MI 48150 // FOR LEASE

ADDITIONAL PHOTOS



P.A. COMMERCIAL
Corporate & Investment Real Estate

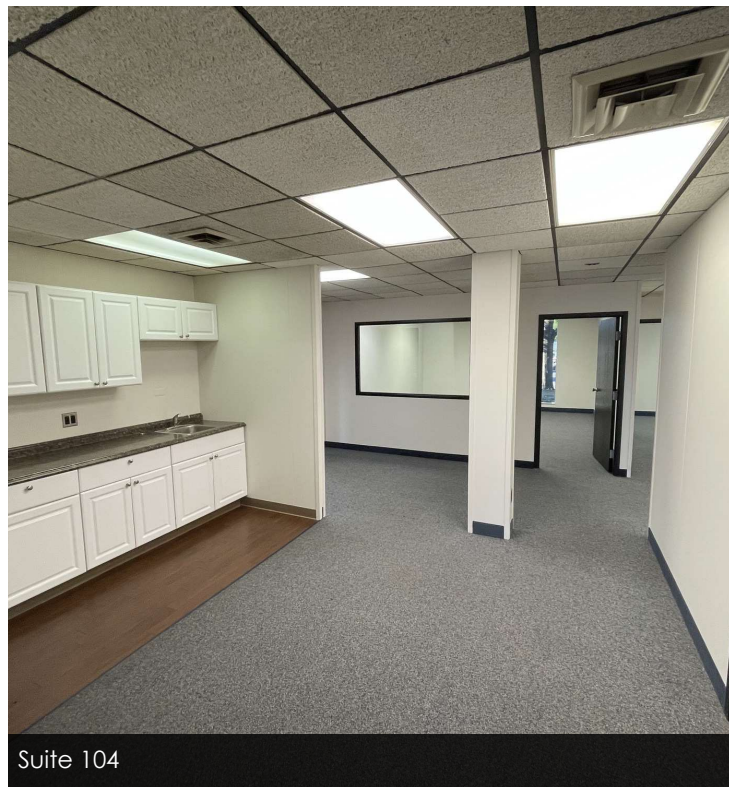
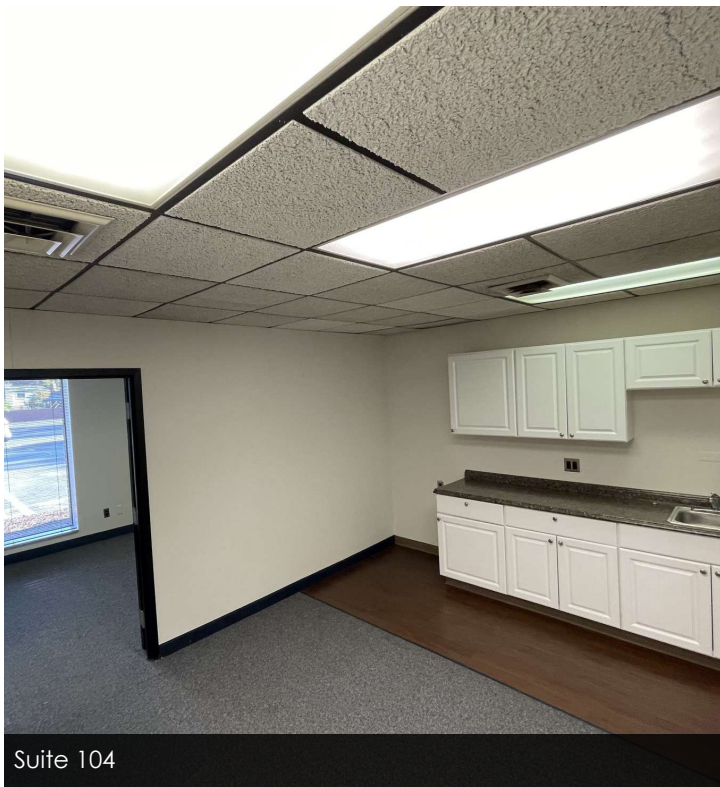
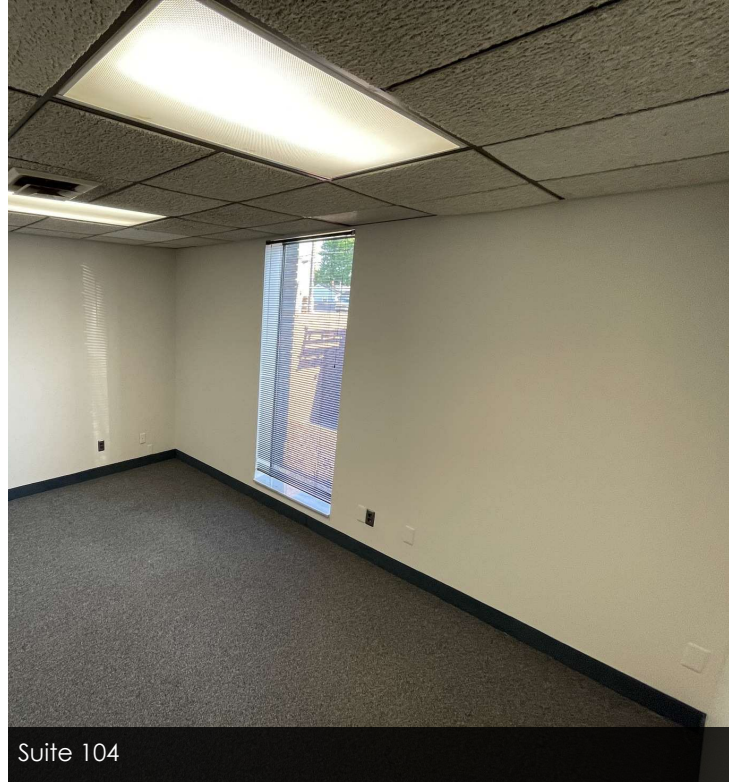
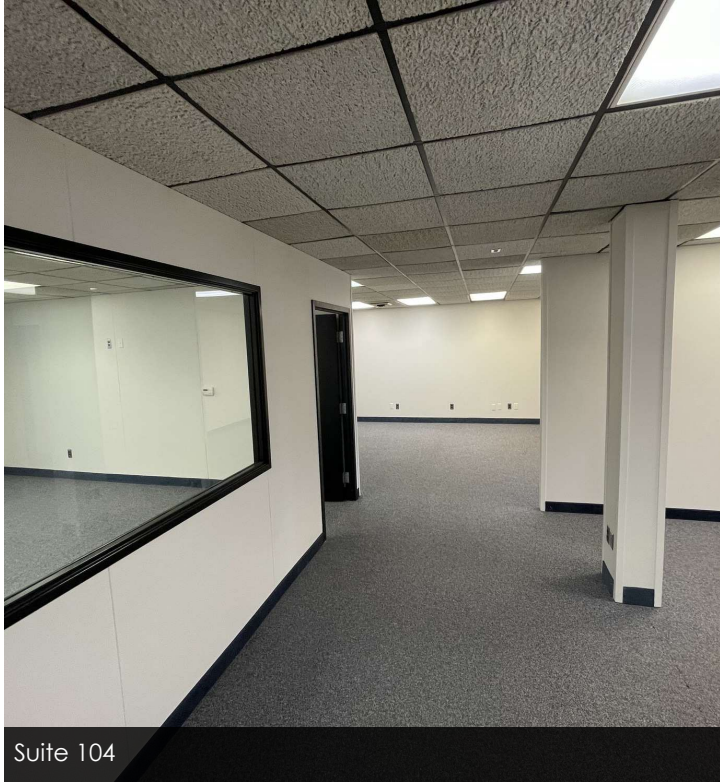
Matthew Schiffman CEO/MANAGING MEMBER
D: 248.281.9907 | C: 248.281.9907
matt@pacommercial.com

Billy Stacy ASSOCIATE
D: 248.663.0507 | C: 248.835.9801
billy@pacommercial.com

We obtained the information above from sources we believe to be reliable. However, we have not verified its accuracy and make no guarantee, warranty or representation about it. It is submitted subject to the possibility of errors, omissions, change of price, rental or other conditions, prior sale, lease or financing, or withdrawal without notice. We include projections, opinions, assumptions or estimates for example only, and they may not represent current, past or future performance of the property. You and your tax and legal advisors should conduct your own investigation of the property and transaction.

33150 - 33200 SCHOOLCRAFT RD, LIVONIA, MI 48150 // FOR LEASE

ADDITIONAL PHOTOS



P.A. COMMERCIAL
Corporate & Investment Real Estate

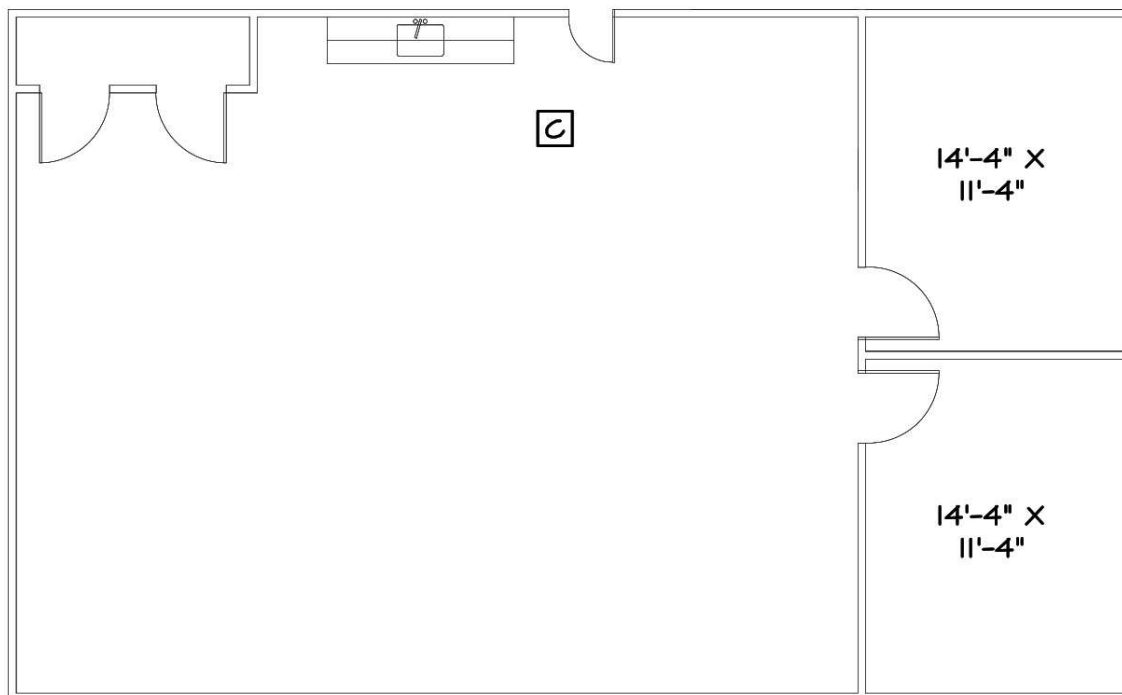
Matthew Schiffman CEO/MANAGING MEMBER
D: 248.281.9907 | C: 248.281.9907
matt@pacommercial.com

Billy Stacy ASSOCIATE
D: 248.663.0507 | C: 248.835.9801
billy@pacommercial.com

We obtained the information above from sources we believe to be reliable. However, we have not verified its accuracy and make no guarantee, warranty or representation about it. It is submitted subject to the possibility of errors, omissions, change of price, rental or other conditions, prior sale, lease or financing, or withdrawal without notice. We include projections, opinions, assumptions or estimates for example only, and they may not represent current, past or future performance of the property. You and your tax and legal advisors should conduct your own investigation of the property and transaction.

33150 - 33200 SCHOOLCRAFT RD, LIVONIA, MI 48150 // FOR LEASE

FLOOR PLANS



Suite 104



P.A. COMMERCIAL
Corporate & Investment Real Estate

Matthew Schiffman CEO/MANAGING MEMBER
D: 248.281.9907 | C: 248.281.9907
matt@pacommercial.com

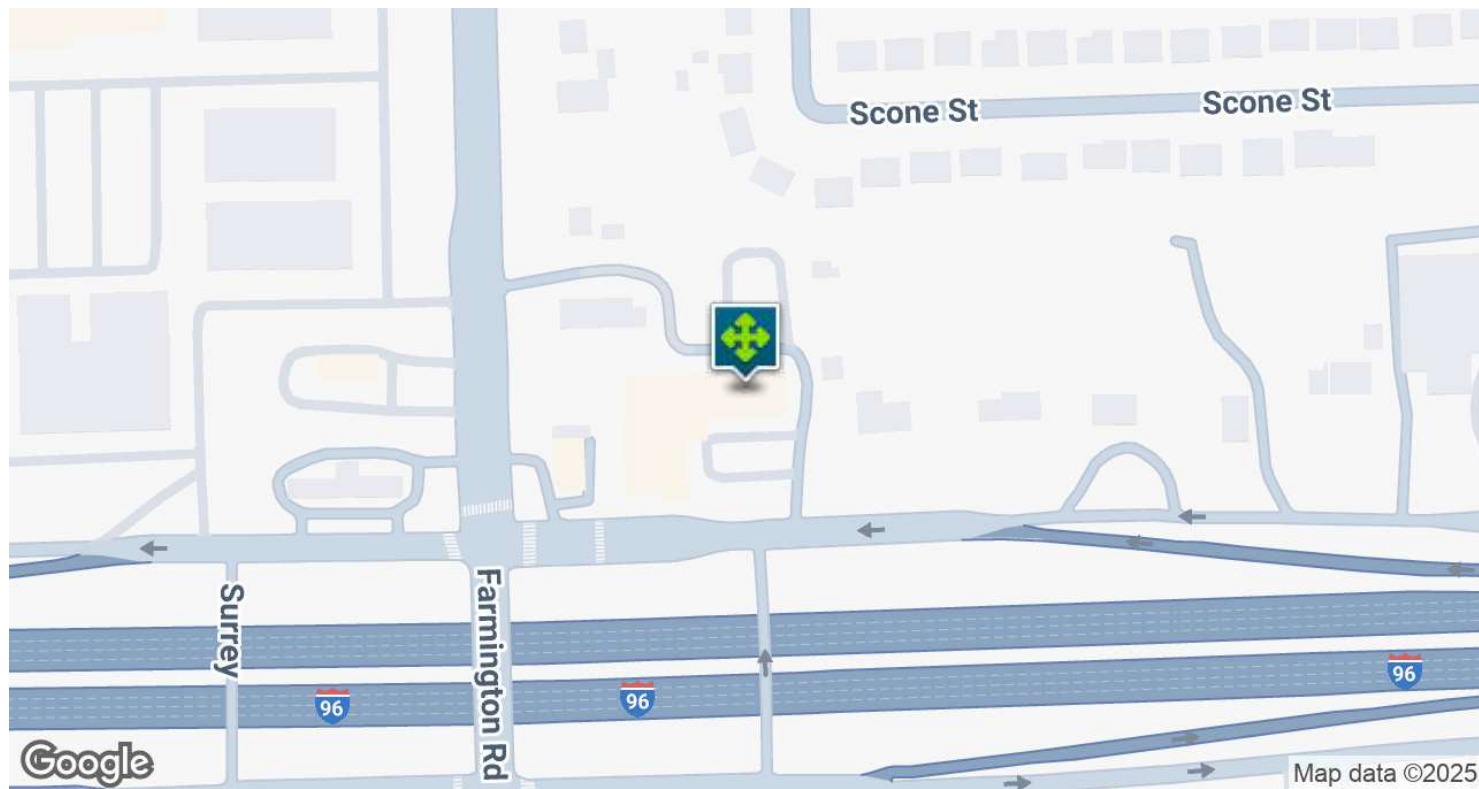
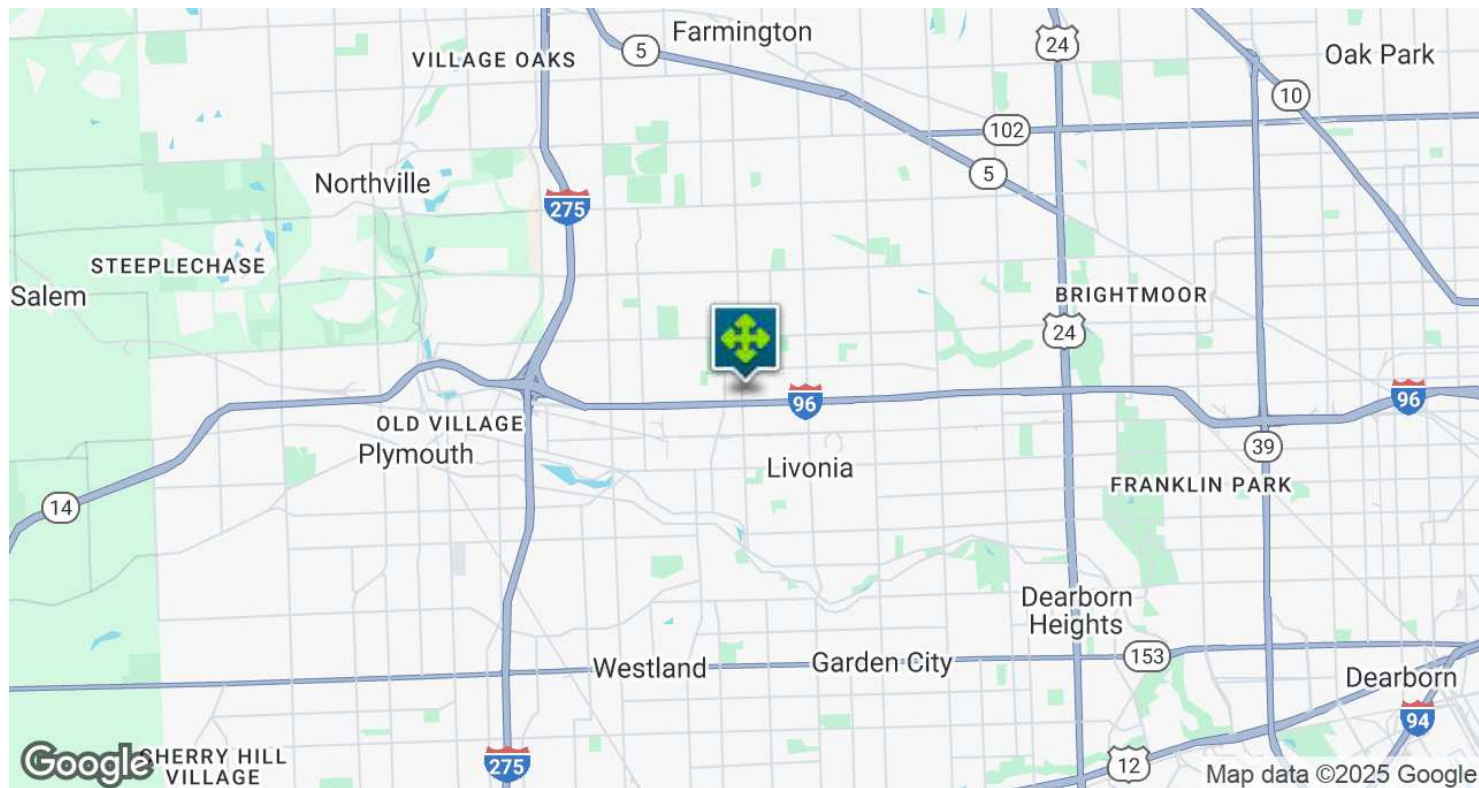
33150

Billy Stacy ASSOCIATE
D: 248.663.0507 | C: 248.835.9801
billy@pacommercial.com

We obtained the information above from sources we believe to be reliable. However, we have not verified its accuracy and make no guarantee, warranty or representation about it. It is submitted subject to the possibility of errors, omissions, change of price, rental or other conditions, prior sale, lease or financing, or withdrawal without notice. We include projections, opinions, assumptions or estimates for example only, and they may not represent current, past or future performance of the property. You and your tax and legal advisors should conduct your own investigation of the property and transaction.

33150 - 33200 SCHOOLCRAFT RD, LIVONIA, MI 48150 // FOR LEASE

LOCATION MAP

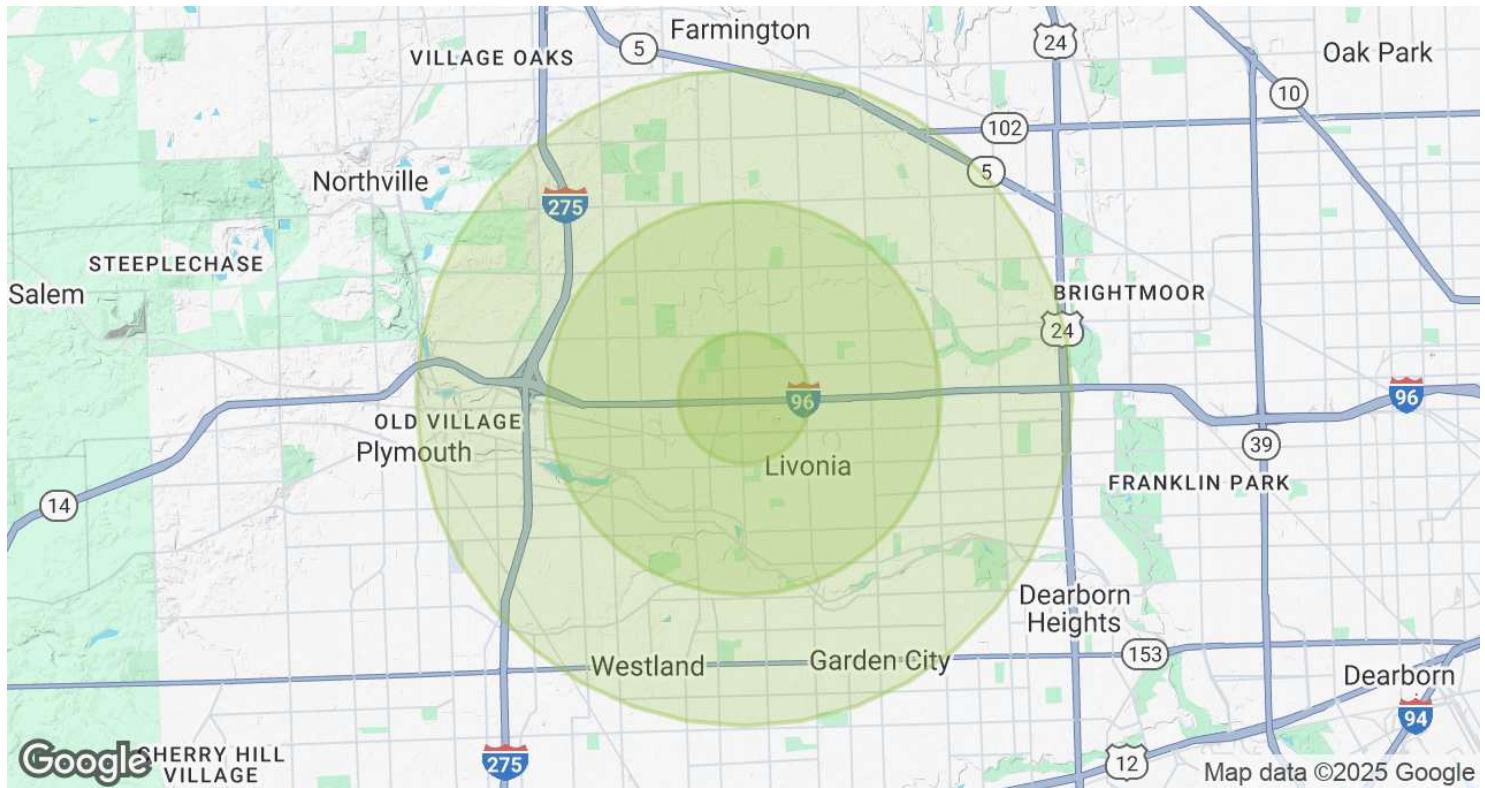


Matthew Schiffman CEO/MANAGING MEMBER
D: 248.281.9907 | C: 248.281.9907
matt@pacommercial.com

Billy Stacy ASSOCIATE
D: 248.663.0507 | C: 248.835.9801
billy@pacommercial.com

We obtained the information above from sources we believe to be reliable. However, we have not verified its accuracy and make no guarantee, warranty or representation about it. It is submitted subject to the possibility of errors, omissions, change of price, rental or other conditions, prior sale, lease or financing, or withdrawal without notice. We include projections, opinions, assumptions or estimates for example only, and they may not represent current, past or future performance of the property. You and your tax and legal advisors should conduct your own investigation of the property and transaction.

DEMOGRAPHICS MAP & REPORT



POPULATION	1 MILE	3 MILES	5 MILES
Total Population	6,471	78,545	248,206
Average Age	41.8	43.2	41.3
Average Age (Male)	38.1	41.1	39.5
Average Age (Female)	45.0	45.1	42.8

HOUSEHOLDS & INCOME	1 MILE	3 MILES	5 MILES
Total Households	2,406	30,110	99,698
# of Persons per HH	2.7	2.6	2.5
Average HH Income	\$75,322	\$77,360	\$70,209
Average House Value	\$200,161	\$193,060	\$179,481

2020 American Community Survey (ACS)

33150 - 33200 SCHOOLCRAFT RD, LIVONIA, MI 48150 // FOR LEASE

CONTACT US



FOR MORE INFORMATION, PLEASE CONTACT:



Matthew Schiffman
CEO/MANAGING MEMBER

D: 248.281.9907
C: 248.281.9907
matt@pacommercial.com



Billy Stacy
ASSOCIATE

D: 248.663.0507
C: 248.835.9801
billy@pacommercial.com

P.A. Commercial

26555 Evergreen Road, Suite 1500
Southfield, MI 48076

P: 248.358.0100

F: 248.358.5300

pacommercial.com

Follow Us!



P.A. COMMERCIAL
Corporate & Investment Real Estate

We obtained the information above from sources we believe to be reliable. However, we have not verified its accuracy and make no guarantee, warranty or representation about it. It is submitted subject to the possibility of errors, omissions, change of price, rental or other conditions, prior sale, lease or financing, or withdrawal without notice. We include projections, opinions, assumptions or estimates for example only, and they may not represent current, past or future performance of the property. You and your tax and legal advisors should conduct your own investigation of the property and transaction.