

WAREHOUSE/STUDIO SPACE FOR LEASE

66 VON HILLERN STREET | BOSTON

Just south of Andrew Square, with unmatched Southeast Expressway visibility



- ±8,822 SF total contiguous
- Divisible to ±4,685 SF (two tailboard docks), ±2,052 SF (one tailboard dock), or ±2,085 SF (studio/showroom/office)



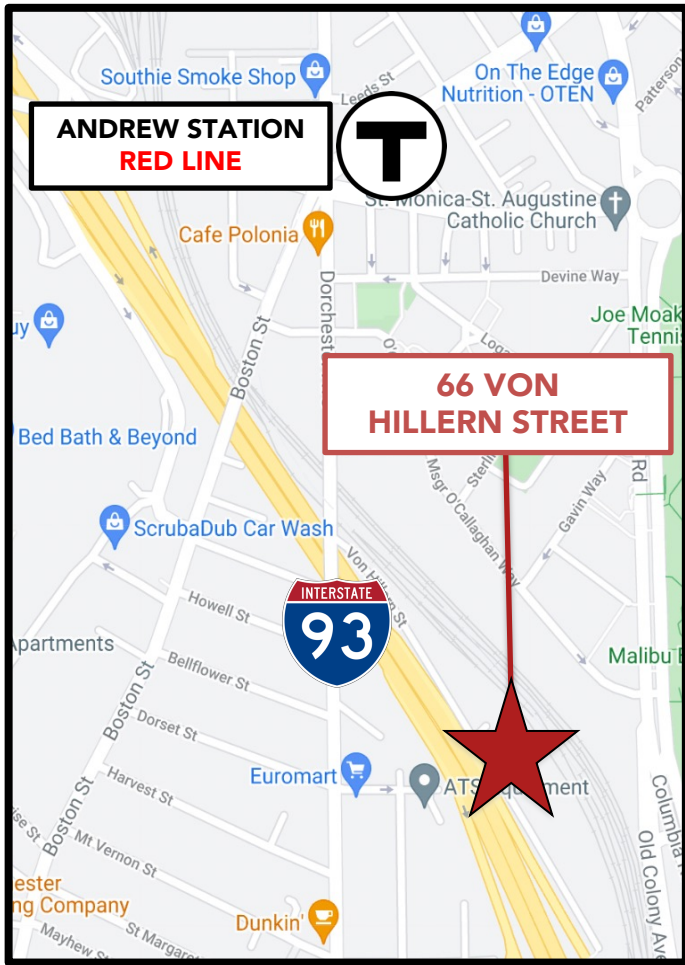
JP Plunkett | Principal | plunkett@r-dome.com | 617.999.4993
Warren Brown | Senior Director | warren@bostoncommercialproperties.com | 617.962.8337
540 Gallivan Boulevard, Suite 208, Boston, MA 02124



www.r-dome.com |



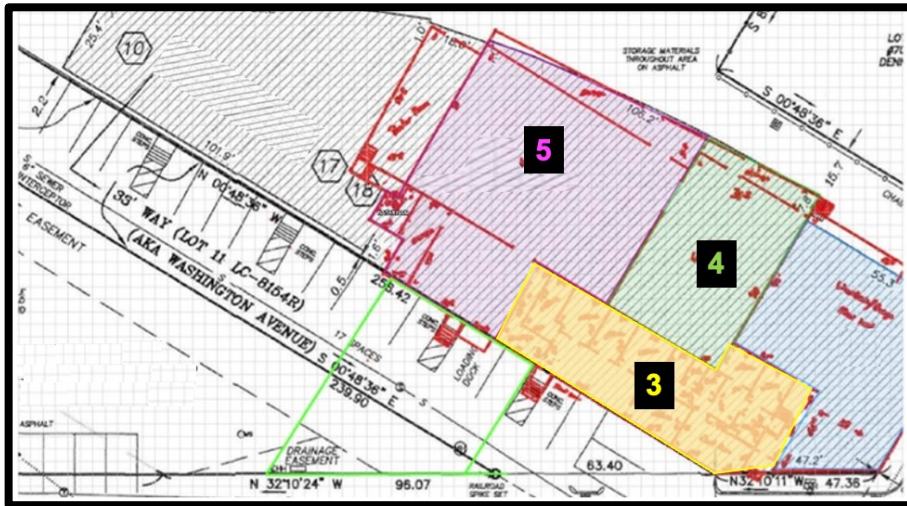
@reddomerealty



View of Southeast Expressway/Route 93, Carpenters Union headquarters and Back Bay office towers – from atop the front loading platform

LESS THAN ONE MILE FROM:

SOUTH BAY CENTER	ON THE DOT
	
	
	
	



Purple space (#5) is the ±4,685 SF space, green space (#4) is the ±2,052 SF space, and yellow space (#3) is the ±2,085 SF space. The combined suites provide parking for 14 cars (six, three, and five, respectively) and, depending on terms, perhaps more.



Small backyard outdoor storage area