

FOR LEASE - RETAIL/OFFICE SUITE



Drayton Tower- 102 East Liberty Street, Suite 101



OFFERING SUMMARY

102 East Liberty Street, Suite 101



General Information

Name of Property:	Drayton Tower
Gross Building Area:	134,472 SF
Stories:	12
Square Feet Available:	1,705 SF
Rental Rate:	\$65.00/SF/Year
Lease Structure:	<u>Modified Gross</u>
Zoning:	D-CBD
Year Built:	1950
Floor Plan:	Open Concept
Available:	May 15 th , 2026

Property Description

Approx. 1,705 square feet available for lease in Drayton Tower on Drayton Street in downtown Savannah, GA. Drayton Tower is a 12-story mid-rise apartment building with numerous flourishing businesses on the ground floor, including Savoy Society, BeetTan, Otium Pilates, Pret Salon, and Labels Luxury Consignment. Property offers excellent street exposure with 18,200 daily drive by traffic on East Liberty frontage, plenty of local and tourist walk-by traffic, and is surrounded by several parking garages and street parking for customer/employee parking. Offering modified gross lease terms for tenant, creating stable operating expenses for long-term tenants.

For more information, please contact:



Lori Judge

CEO
Cell: 912-484-1514
Office: 912-236-1000
Lori@judgerealty.com



Alex Hansbarger

Commercial Leasing and Sales
Cell: 912-509-2108
Office: 912-236-1000
Alex@judgerealty.com

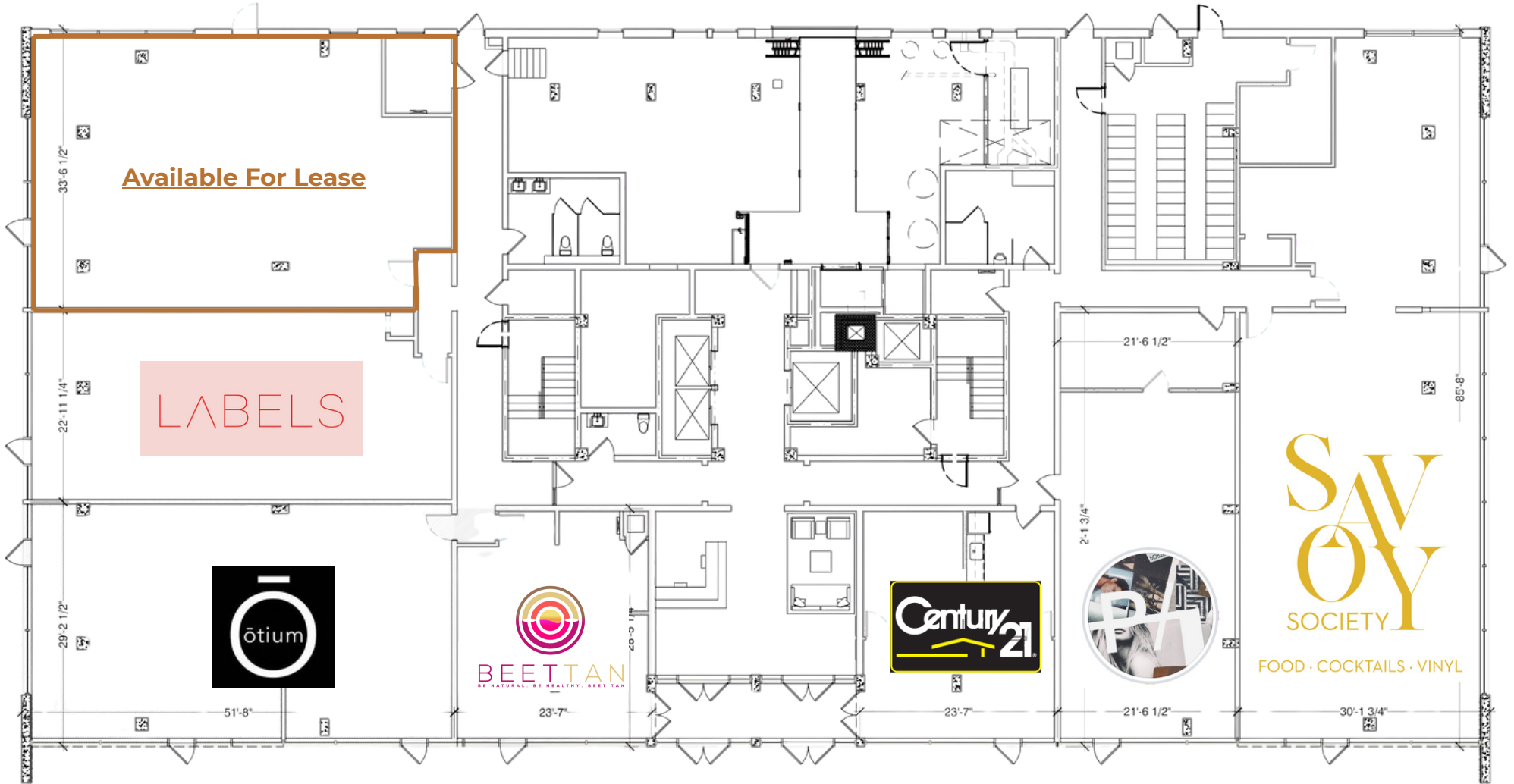
ADDITIONAL PHOTOS

102 East Liberty Street, Suite 101



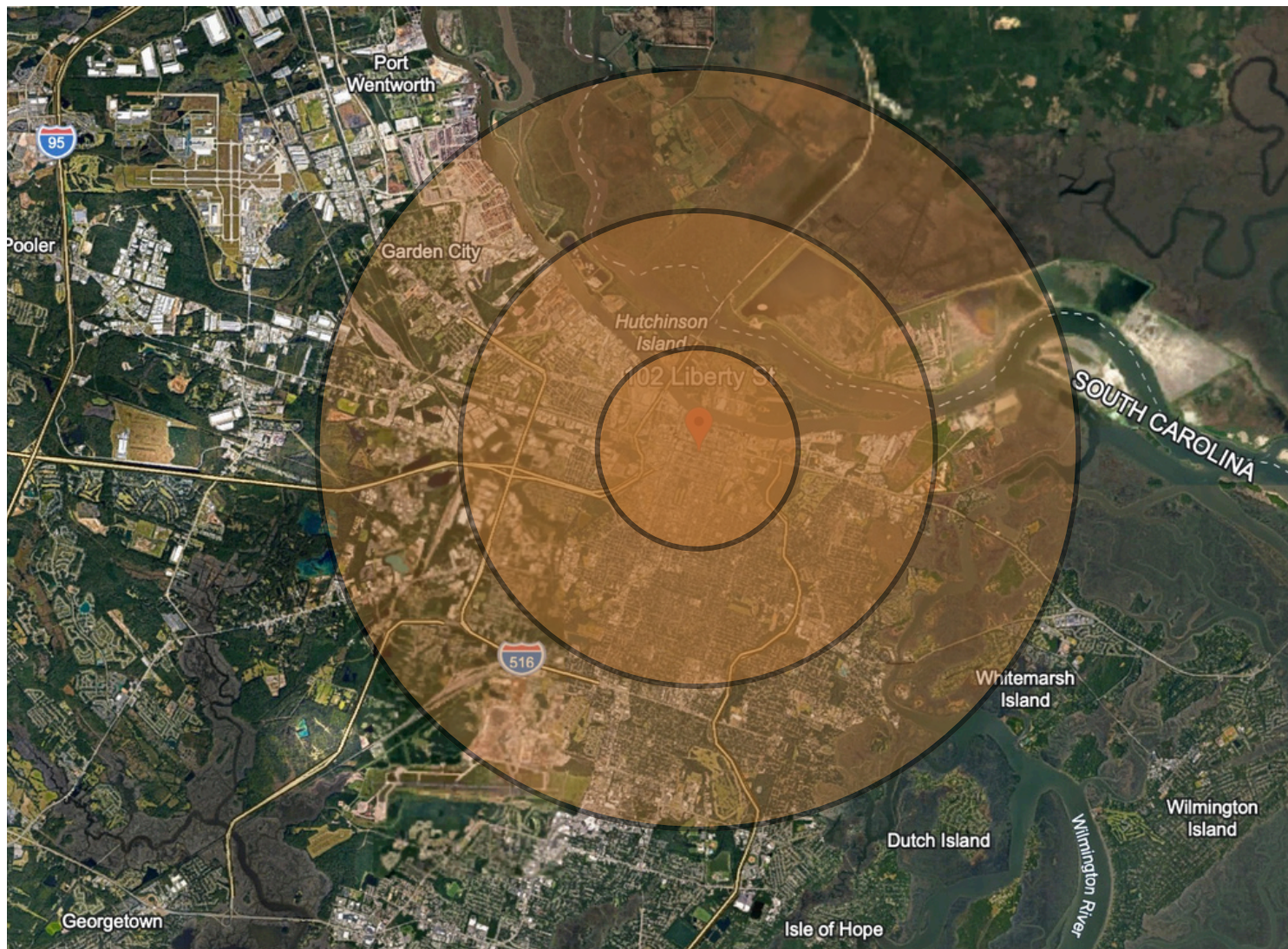
FLOOR PLAN

102 East Liberty Street, Suite 101



Location/Demographics

102 East Liberty Street, Suite 101



Statistics

Population (2024)

1 Mile: 18,848
3 Miles: 73,933
5 Miles: 115,595

Average HH Income (2024)

1 Mile: \$84,412
3 Miles: \$72,378
5 Miles: \$70,813

Median Age (2024)

1 Mile: 28.9
3 Miles: 34.6
5 Miles: 35.2

Tourism (2023)

17.7 Million Reported

Taxable Retail Sales (Chatham County)

2024 - 12.3B
2022 - 11.4B
2020 - 7.9B

AERIAL PHOTO

102 East Liberty Street, Suite 101






About Judge Realty


Judge Realty is the leader in Savannah Commercial Real Estate. We manage and lease over 500 properties in the Savannah area and work with local and national clients across the USA.

COMMERCIAL

RESIDENTIAL

PROPERTY MANAGEMENT

 Savannah, GA 31404

 912-236-1000

 info@judgerealty.com

 judgerealty.com