

**FOR LEASE** · Retail / Restaurant  
1,206 SF



# Paloma Plaza

Unit 118

**3005 Silver Creek Rd**  
San Jose, CA 95121

EXCLUSIVE AGENT:

**Denise Lupretta** CA DRE: 01735925

dlupretta@primecommercialinc.com  
(408) 314-3240

**PRIME COMMERCIAL**  
INCORPORATED

www.primecommercialinc.com  
(408) 879 - 4000



# Paloma Plaza

3005 Silver Creek Rd, Unit 118

SAN JOSE, CA 95121

Property  
Information

## Property Info

**ADDRESS:** UNIT 118  
3005 Silver Creek Road  
San Jose, CA 95121

**SIZE:** 1,202 Square Feet

**USE TYPE:** Retail / Restaurant

**PRICE:** Contact Agent



## Highlights

- Infrastructure to Support Possible Restaurant / Café Use
- Front and Back Facade Signage with High Visibility
- Central Location in Busy Plaza
- Convenient On-Site Parking Lot
- Great Location Near Main Thoroughfare Serving San Jose's Evergreen and Silver Creek Neighborhood
- Immediate Neighborhood Surrounded by High Density Residential and Complimentary Retail Uses
- High Daytime Population and High Traffic Counts



EXCLUSIVE AGENT: **Denise Lupretta** • CA DRE: 01735925

✉ [dlupretta@primecommercialinc.com](mailto:dlupretta@primecommercialinc.com)

☎ CELL: (408) 314-3240

SAN JOSE, CA 95121

**Prime Commercial, Incorporated © 2024** | Prime Commercial, Inc. has obtained the information contained herein from sources we deem reliable. However, we have not verified its accuracy and make no guarantee, warranty or representation about it. It is subject to errors, modification, omission, change of price and/or terms, prior lease sale or financing, or withdrawal without notice. It may include projections, opinions, or assumptions or estimated for example only, and they may represent current or future performance of the property. You and your tax and legal advisors should conduct your own of the property and transaction. The information provided in this brochure are estimates only, not representations, and are not intended to be relied upon for any purpose. All demographic information contained in this brochure is obtained from Esri 2024 database via SDB.



# Paloma Plaza

3005 Silver Creek Rd, Unit 118

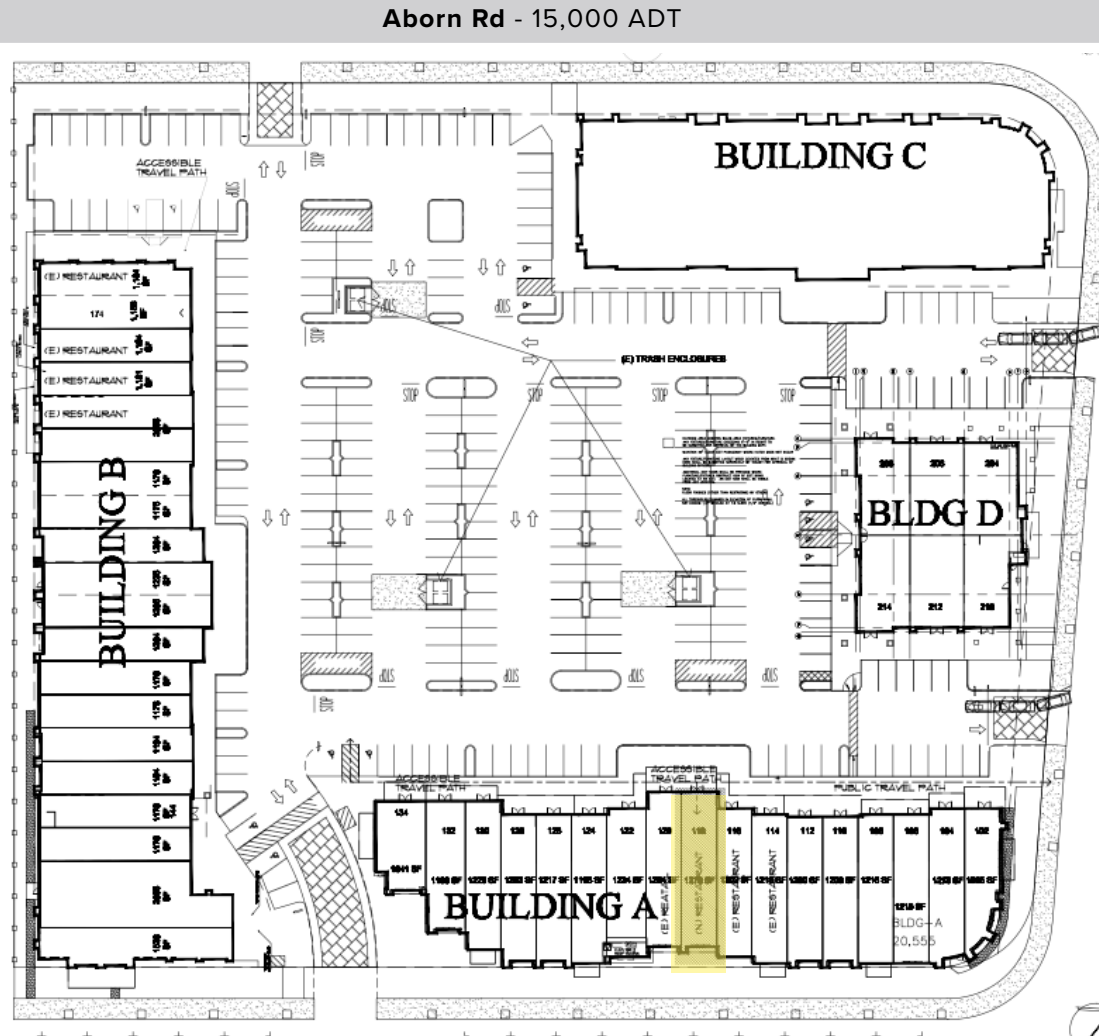
SAN JOSE, CA 95121

Site Plan  
For Reference Only

## Site Plan

### BUILDING A

Unit 118 - 1,202 SF



Silver Creek Rd - 24,216 ADT

EXCLUSIVE AGENT: Denise Lupretta • CA DRE: 01735925

✉ dlupretta@primecommercialinc.com

☎ CELL: (408) 314-3240

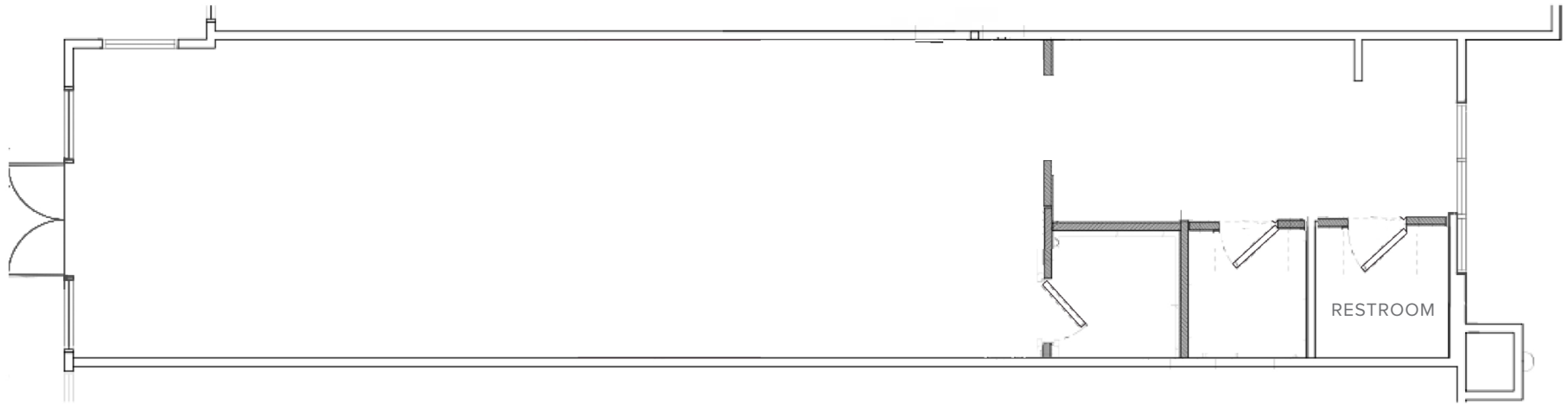
# Paloma Plaza

3005 Silver Creek Rd, Unit 118

SAN JOSE, CA 95121

## Floor Plan Unit 118 Interior

### Floor Plan *\*Interior Not to Scale*



### Unit 118 - 1,202 SF

- Central Location within Plaza
- In-Suite Restroom
- Infrastructure for Possible Restaurant / Café
- Front Double Doors
- Front and Back Facade Signage
- Outdoor Shared Commercial Trash Receptacles



EXCLUSIVE AGENT: **Denise Lupretta** • CA DRE: 01735925

✉ [dlupretta@primecommercialinc.com](mailto:dlupretta@primecommercialinc.com)

☎ CELL: (408) 314-3240



# Paloma Plaza

3005 Silver Creek Rd, Unit 118

SAN JOSE, CA 95121

## Aerial Map

(Close Up)



EXCLUSIVE AGENT: **Denise Lupretta** • CA DRE: 01735925

✉ [dlupretta@primecommercialinc.com](mailto:dlupretta@primecommercialinc.com)

☎ CELL: (408) 314-3240



SAN JOSE, CA 95121

## Aerial Map (Nearby Retailers)

