

PRIME OFFICE/RETAIL SUITES FOR LEASE

21 W MOUNTAIN STREET

21 W Mountain St, Fayetteville, AR 72701



PROPERTY DESCRIPTION

Discover the perfect space for your business at 21 W Mountain St in Fayetteville, AR. This prime commercial property offers a spacious and versatile interior, ideal for retail, office, or event use. With its prominent location and ample natural light, this space provides a welcoming atmosphere for customers and employees alike. The modern design and high-traffic area make it an excellent choice for businesses looking to make a strong impression. Located in the same building as Tiny Tim's Pizza, right next door to Jammin Java, and just up the street from Hugo's Restaurant, there are many great places to grab lunch or visit on break. Private parking spots available in attached parking garage for \$200/mo with elevator access to street and other businesses.

PROPERTY HIGHLIGHTS

- Downtown Bentonville Square
- Private parking available
- Multiple spaces available

OFFERING SUMMARY

Lease Rate:	\$19.75 - 29.00 SF/yr (NNN)
Available SF:	1,000 - 6,346 SF
Building Size:	24,600 SF

DEMOGRAPHICS	1 MILE	3 MILES	5 MILES
Total Households	5,545	24,770	43,543
Total Population	14,755	59,938	105,448
Average HH Income	\$64,836	\$73,569	\$92,172

We obtained the information above from sources we believe to be reliable. However, we have not verified its accuracy and make no guarantee, warranty or representation about it. It is submitted subject to the possibility of errors, omissions, change of price, rental or other conditions, prior sale, lease or financing, or withdrawal without notice. We include projections, opinions, assumptions or estimates for example only, and they may not represent current or future performance of the property. You and your tax and legal advisors should conduct your own investigation of the property and transaction.

SALMONSEN GROUP

Executive Broker
O: 479.231.1355
C: 479.330.1250
sgrleadmanager@gmail.com
AR #EB00066512

KW COMMERCIAL
201 SW 14th St.
Suite 203
Bentonville, AR 72712

Each Office Independently Owned and Operated salmonsengroup.com

PRIME OFFICE/RETAIL SUITES FOR LEASE



21 W MOUNTAIN STREET

21 W Mountain St, Fayetteville, AR 72701



LEASE INFORMATION

Lease Type:	NNN	Lease Term:	Negotiable
Total Space:	1,000 - 6,346 SF	Lease Rate:	\$19.75 - \$29.00 SF/yr

AVAILABLE SPACES

SUITE	TENANT	SIZE (SF)	LEASE TYPE	LEASE RATE	DESCRIPTION
21 W Mountain St Suite 120	Available	1,000 SF	NNN	\$29.00 SF/yr	-
21 W Mountain St Suite 123	Available	5,475 SF	NNN	\$19.75 SF/yr	-
21 W Mountain St Suite 300	Available	6,346 SF	NNN	\$29.00 SF/yr	-

We obtained the information above from sources we believe to be reliable. However, we have not verified its accuracy and make no guarantee, warranty or representation about it. It is submitted subject to the possibility of errors, omissions, change of price, rental or other conditions, prior sale, lease or financing, or withdrawal without notice. We include projections, opinions, assumptions or estimates for example only, and they may not represent current or future performance of the property. You and your tax and legal advisors should conduct your own investigation of the property and transaction.

SALMONSEN GROUP

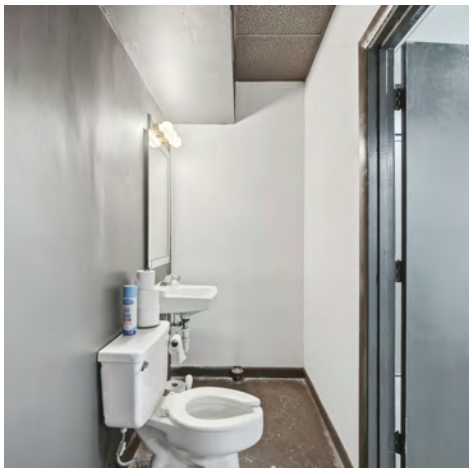
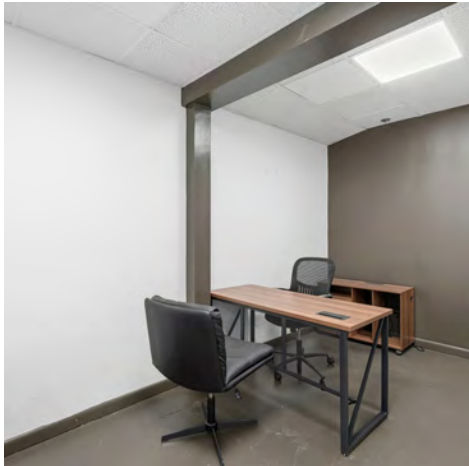
Executive Broker
O: 479.231.1355
C: 479.330.1250
sgrleadmanager@gmail.com
AR #EB00066512

KW COMMERCIAL
201 SW 14th St.
Suite 203
Bentonville, AR 72712

Each Office Independently Owned and Operated salmonsengroup.com

SUITE 120 - PHOTOS

21 W Mountain St, Fayetteville, AR 72701



We obtained the information above from sources we believe to be reliable. However, we have not verified its accuracy and make no guarantee, warranty or representation about it. It is submitted subject to the possibility of errors, omissions, change of price, rental or other conditions, prior sale, lease or financing, or withdrawal without notice. We include projections, opinions, assumptions or estimates for example only, and they may not represent current or future performance of the property. You and your tax and legal advisors should conduct your own investigation of the property and transaction.

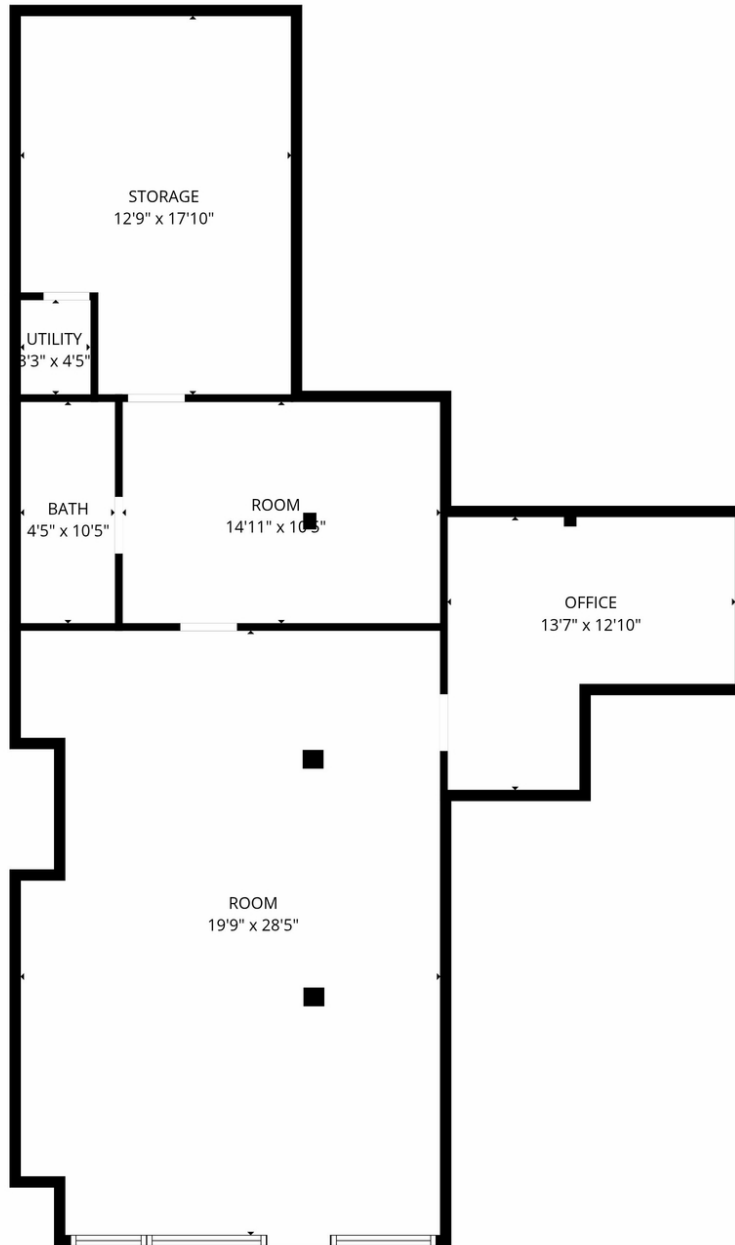
SALMONSEN GROUP
Executive Broker
O: 479.231.1355
C: 479.330.1250
sgrleadmanager@gmail.com
AR #EB00066512

KW COMMERCIAL
201 SW 14th St.
Suite 203
Bentonville, AR 72712

Each Office Independently Owned and Operated salmonsengroup.com

SUITE 120 - FLOOR PLAN

21 W Mountain St, Fayetteville, AR 72701



FLOOR PLAN CREATED BY CUBICASA APP. MEASUREMENTS DEEMED HIGHLY RELIABLE BUT NOT GUARANTEED.

We obtained the information above from sources we believe to be reliable. However, we have not verified its accuracy and make no guarantee, warranty or representation about it. It is submitted subject to the possibility of errors, omissions, change of price, rental or other conditions, prior sale, lease or financing, or withdrawal without notice. We include projections, opinions, assumptions or estimates for example only, and they may not represent current or future performance of the property. You and your tax and legal advisors should conduct your own investigation of the property and transaction.

SALMONSEN GROUP

Executive Broker
O: 479.231.1355
C: 479.330.1250
sgrleadmanager@gmail.com
AR #EB00066512

KW COMMERCIAL
201 SW 14th St.
Suite 203
Bentonville, AR 72712

Each Office Independently Owned and Operated salmonsengroup.com

SUITE 123 - PHOTOS

21 W Mountain St, Fayetteville, AR 72701



We obtained the information above from sources we believe to be reliable. However, we have not verified its accuracy and make no guarantee, warranty or representation about it. It is submitted subject to the possibility of errors, omissions, change of price, rental or other conditions, prior sale, lease or financing, or withdrawal without notice. We include projections, opinions, assumptions or estimates for example only, and they may not represent current or future performance of the property. You and your tax and legal advisors should conduct your own investigation of the property and transaction.

SALMONSEN GROUP

Executive Broker
O: 479.231.1355
C: 479.330.1250
sgrleadmanager@gmail.com
AR #EB00066512

KW COMMERCIAL
201 SW 14th St.
Suite 203
Bentonville, AR 72712

Each Office Independently Owned and Operated salmonsengroup.com

21 W Mountain St, Fayetteville, AR 72701

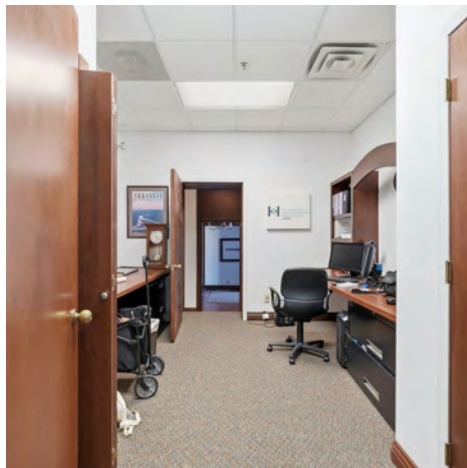


SALMONSEN GROUP
Executive Broker
O: 479.231.1355
C: 479.330.1250
sgleadmanager@gmail.com
AR #EB00066512

KW COMMERCIAL
201 SW 14th St.
Suite 203
Bentonville, AR 72712

SUITE 300 PHOTOS

21 W Mountain St, Fayetteville, AR 72701



We obtained the information above from sources we believe to be reliable. However, we have not verified its accuracy and make no guarantee, warranty or representation about it. It is submitted subject to the possibility of errors, omissions, change of price, rental or other conditions, prior sale, lease or financing, or withdrawal without notice. We include projections, opinions, assumptions or estimates for example only, and they may not represent current or future performance of the property. You and your tax and legal advisors should conduct your own investigation of the property and transaction.

SALMONSEN GROUP

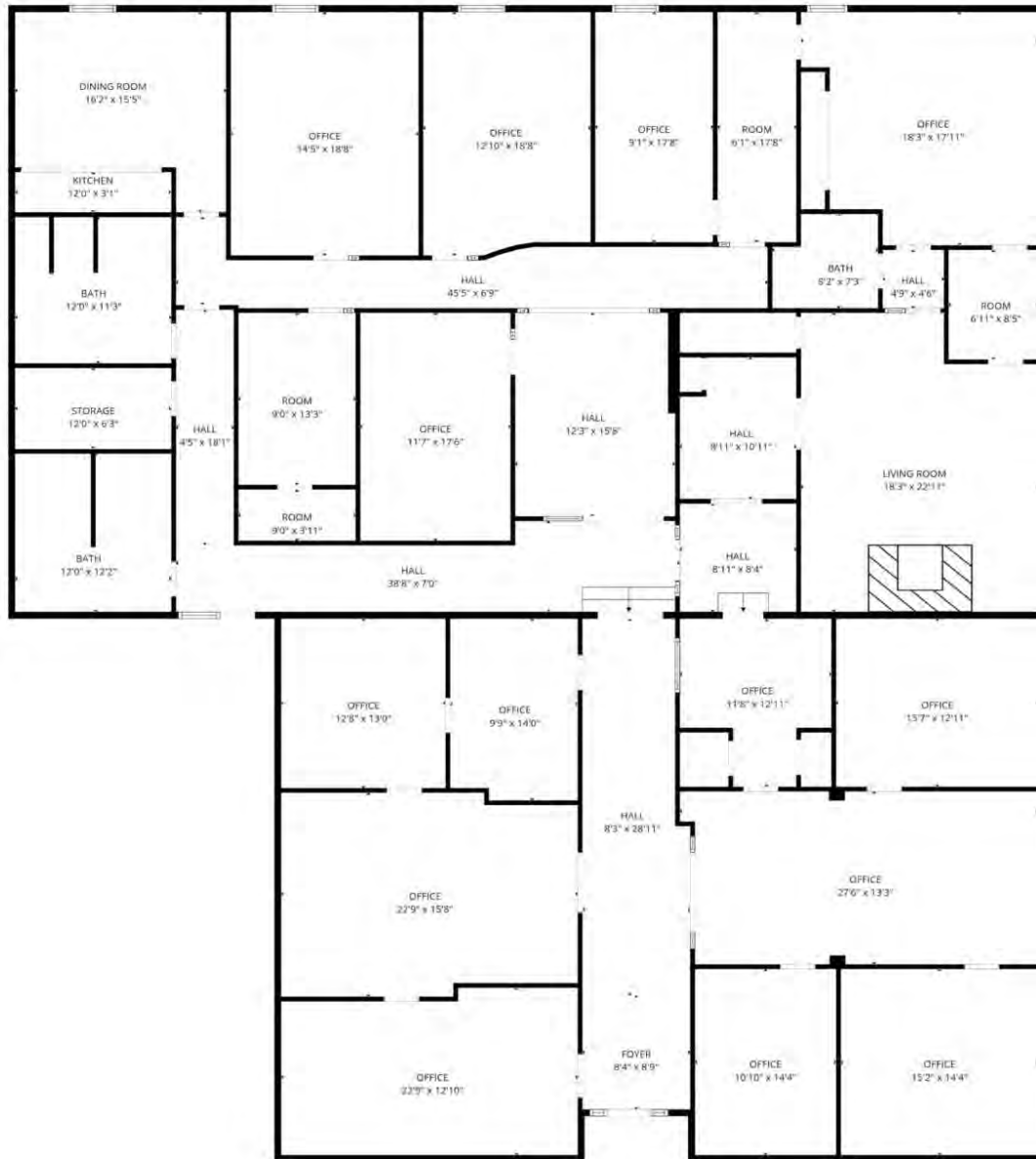
Executive Broker
O: 479.231.1355
C: 479.330.1250
sgrleadmanager@gmail.com
AR #EB00066512

KW COMMERCIAL
201 SW 14th St.
Suite 203
Bentonville, AR 72712

Each Office Independently Owned and Operated salmonsengroup.com

SUITE 300 FLOOR PLAN

21 W Mountain St, Fayetteville, AR 72701



21 W Mountain Suite 300 +/- 6,346 SF

We obtained the information above from sources we believe to be reliable. However, we have not verified its accuracy and make no guarantee, warranty or representation about it. It is submitted subject to the possibility of errors, omissions, change of price, rental or other conditions, prior sale, lease or financing, or withdrawal without notice. We include projections, opinions, assumptions or estimates for example only, and they may not represent current or future performance of the property. You and your tax and legal advisors should conduct your own investigation of the property and transaction.

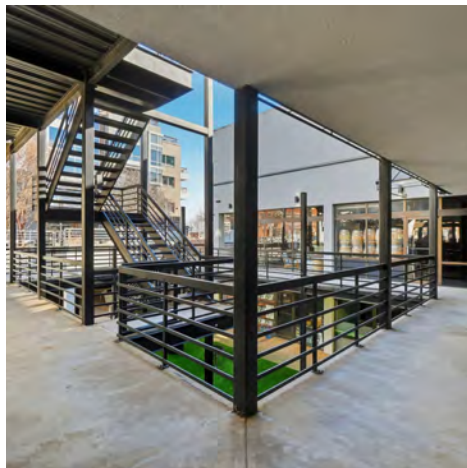
SALMONSEN GROUP
Executive Broker
O: 479.231.1355
C: 479.330.1250
sgrleadmanager@gmail.com
AR #EB00066512

KW COMMERCIAL
201 SW 14th St.
Suite 203
Bentonville, AR 72712

Each Office Independently Owned and Operated salmonsengroup.com

PROPERTY PHOTOS

21 W Mountain St, Fayetteville, AR 72701



We obtained the information above from sources we believe to be reliable. However, we have not verified its accuracy and make no guarantee, warranty or representation about it. It is submitted subject to the possibility of errors, omissions, change of price, rental or other conditions, prior sale, lease or financing, or withdrawal without notice. We include projections, opinions, assumptions or estimates for example only, and they may not represent current or future performance of the property. You and your tax and legal advisors should conduct your own investigation of the property and transaction.

SALMONSEN GROUP

Executive Broker
O: 479.231.1355
C: 479.330.1250
sgrleadmanager@gmail.com
AR #EB00066512

KW COMMERCIAL
201 SW 14th St.
Suite 203
Bentonville, AR 72712

Each Office Independently Owned and Operated salmonsengroup.com

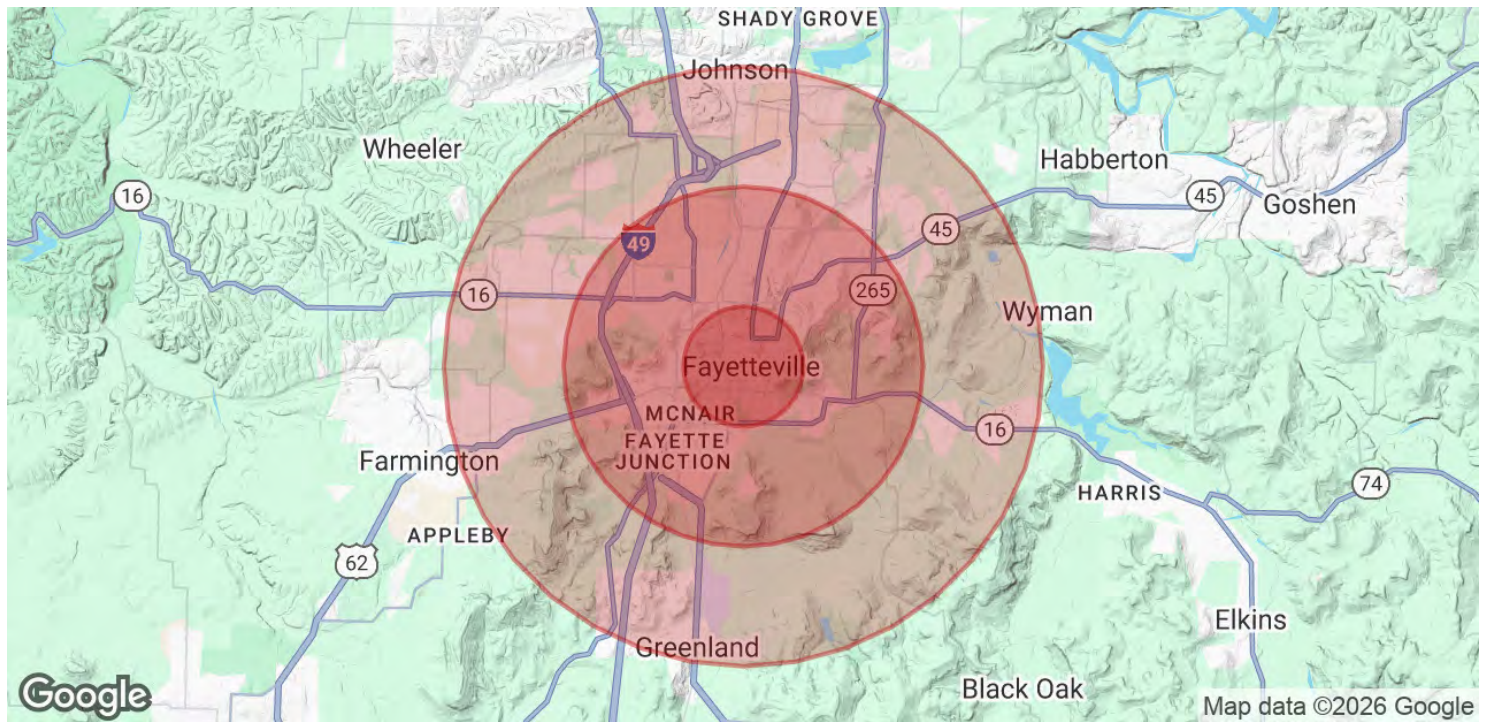
Each Office Independently Owned and Operated salmonsengroup.com

PRIME OFFICE/RETAIL SUITES FOR LEASE



21 W MOUNTAIN STREET

21 W Mountain St, Fayetteville, AR 72701



POPULATION	1 MILE	3 MILES	5 MILES
Total Population	14,755	59,938	105,448
Average Age	30	32	34
Average Age (Male)	30	32	34
Average Age (Female)	30	33	35

HOUSEHOLDS & INCOME	1 MILE	3 MILES	5 MILES
Total Households	5,545	24,770	43,543
# of Persons per HH	2.7	2.4	2.4
Average HH Income	\$64,836	\$73,569	\$92,172
Average House Value	\$390,307	\$348,491	\$360,712

Demographics data derived from AlphaMap

We obtained the information above from sources we believe to be reliable. However, we have not verified its accuracy and make no guarantee, warranty or representation about it. It is submitted subject to the possibility of errors, omissions, change of price, rental or other conditions, prior sale, lease or financing, or withdrawal without notice. We include projections, opinions, assumptions or estimates for example only, and they may not represent current or future performance of the property. You and your tax and legal advisors should conduct your own investigation of the property and transaction.

SALMONSEN GROUP
Executive Broker
O: 479.231.1355
C: 479.330.1250
sgrleadmanager@gmail.com
AR #EB00066512

KW COMMERCIAL
201 SW 14th St.
Suite 203
Bentonville, AR 72712

Each Office Independently Owned and Operated salmonsengroup.com