



MERCURY
DEVELOPMENT

FOR LEASE
RETAIL SPACE



Cascade Square 1400 W 6th St, The Dalles, OR 97058

Property Details

- Available Units:** 1
- Total Units:** 20
- Gross Leasable Area:** 116,774 SF
- Parking Spaces:** 507

Contact

- Leasing Agent:** Timothy Dougherty, CLS
- Office:** 503-212-4617
- Email:** tdougherty@mercurydev.com

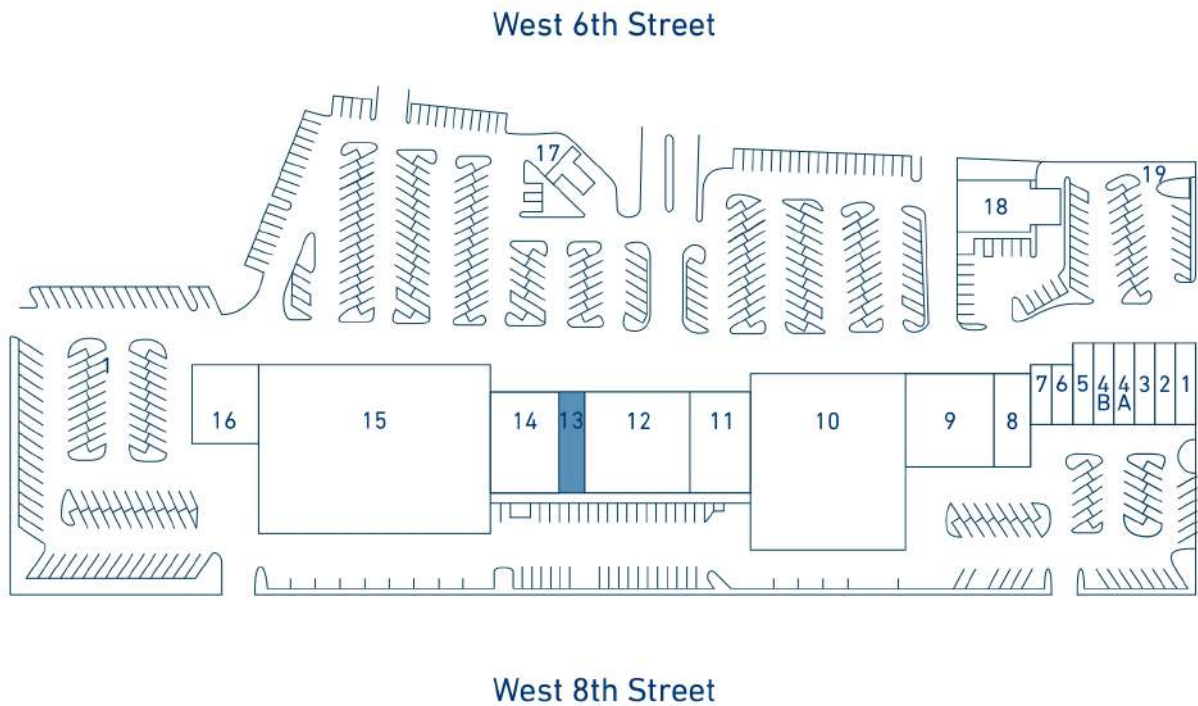
Features

Cascade Square Shopping Center is located in the retail hub of The Dalles, Oregon on West 6th Street. Tenants such as Rite Aid, Grocery Outlet, Jo-Ann Fabrics & Crafts, AT&T, and the Dollar Tree benefit from the center’s unique geographical location that draws patrons from very far distances. Utilizing a great tenant mix, enhanced by shadow anchors such as Goodwill, Fred Meyer, and Safeway, Cascade Square Shopping Center will continue to offer tenants great retail exposure situated on the city’s busiest intersection.

Demographics

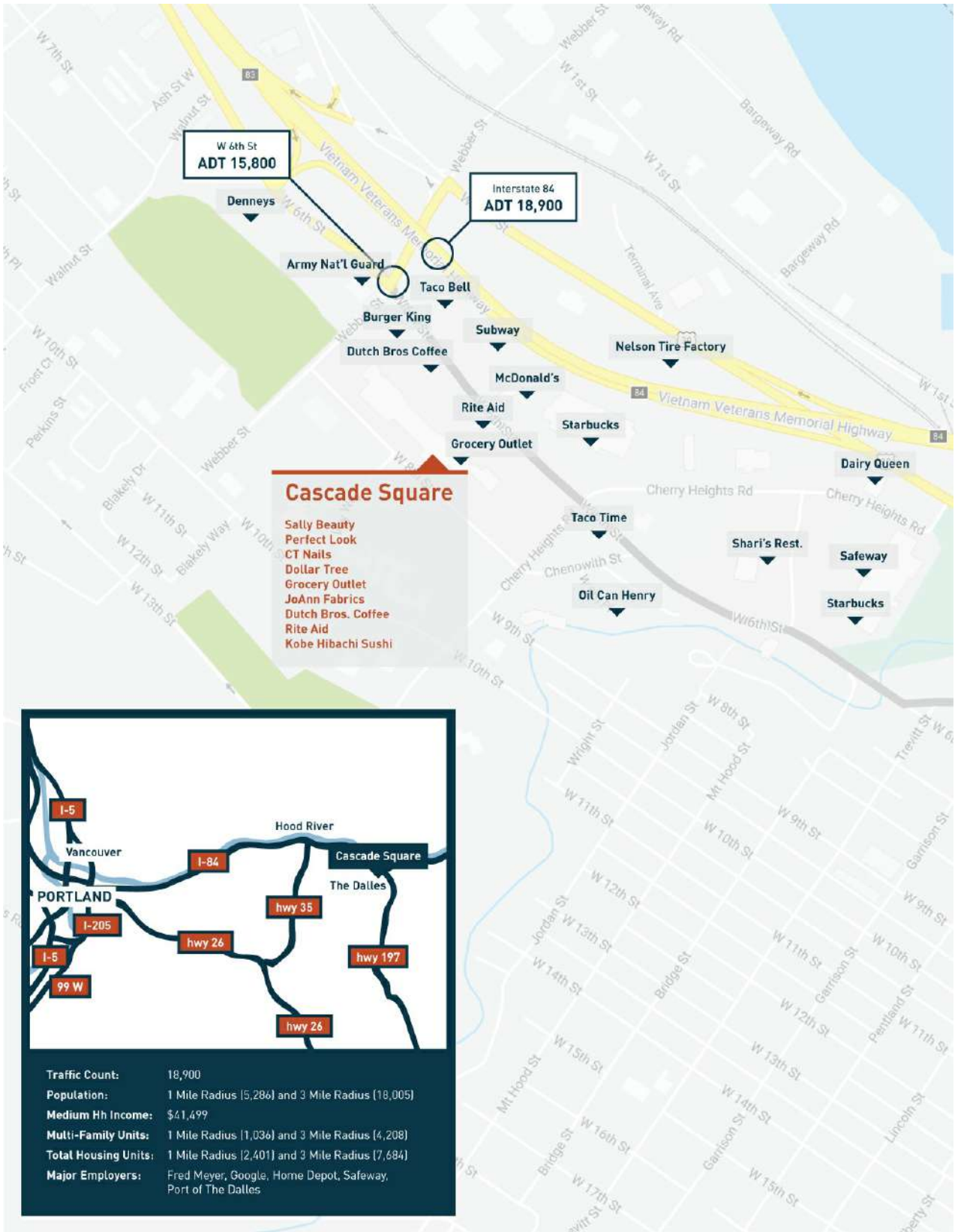
DEMOGRAPHICS	1 mile	3 mile	5 miles
Population	5,366	18,004	20,701
Median HH Income	\$37,174	\$41,482	\$42,692
Median Age	40.1	40.5	41.1
Total Housing Units	2,351	7,683	8,826
College Educated	11%	8%	8%
Total Employees	3,490	9,839	11,036

Site Map



For Illustration Purposes Only

1	Pizza Hut	7	Smoke 4 Less	14	Blissful Night Mattress
2	Sally Beauty	8	Wash N' Shop	15	Rite Aid
3	AT&T	9	Dollar Tree	16	China Buffet
4A	Kobe Hibachi Sushi	10	Grocery Outlet	17	Dutch Bros. Coffee
4B	OneMain Financial	11	Maurices	18	Rivermark Credit Union
5	Perfect Look	12	Jo-Ann Fabrics & Crafts	19	Wells Fargo ATM
6	C.T. Nails	13	Unit Available (2,000 SF)		




 Photos



Cascade Square - Unit 13



Unit 13  1328 W 6th St, The Dalles, OR 97058

Unit Details

Square Footage:	2,000 SF
Dimensions:	20' x 100'
Rate:	Call For Details
Date of Availability:	Currently Available

Features

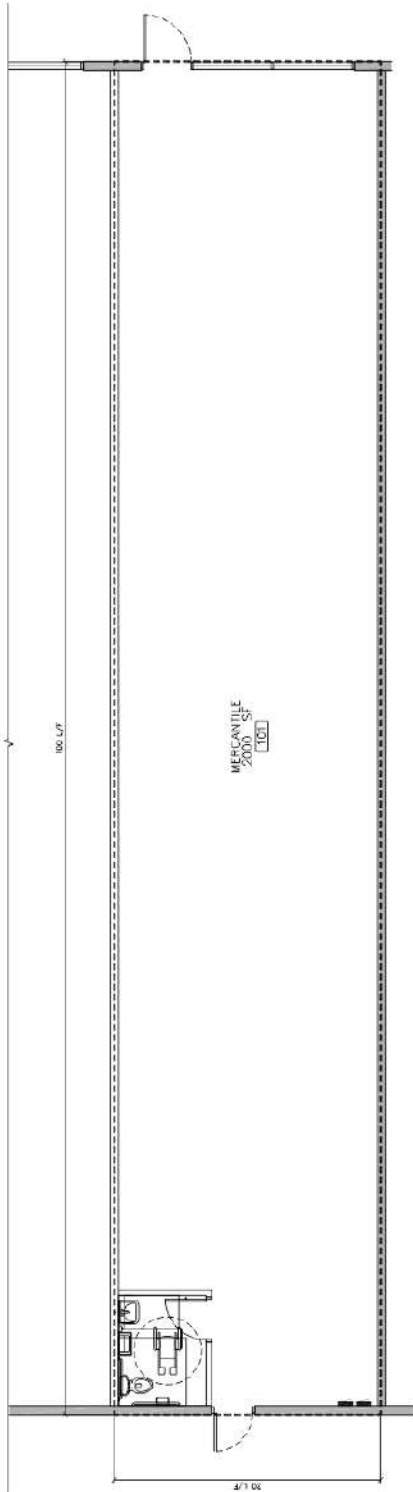
- New 2,000 SF "Class A" storefront being demised.
- Highly visible sign band facing the busy W. 6th Street.
- Rear door for loading.
- GLA flexibility available per tenant's use/preference.
- Delivery: vanilla shell with one ADA restroom.

Contact

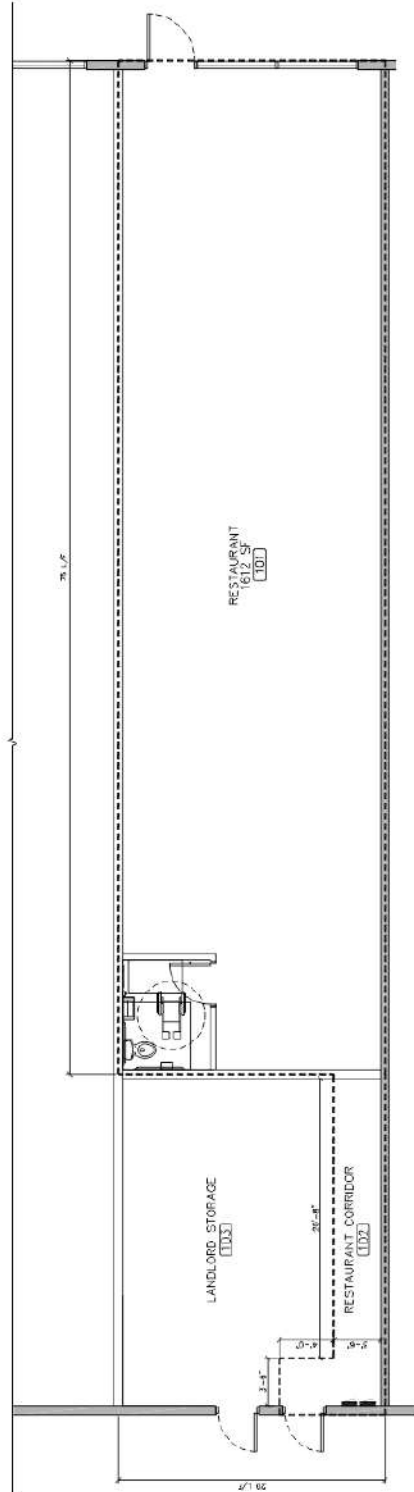
Leasing Agent:	Timothy Dougherty, CLS
Office:	503-212-4617
Email:	tdougherty@mercurydev.com

Unit 13 - Floor Plan

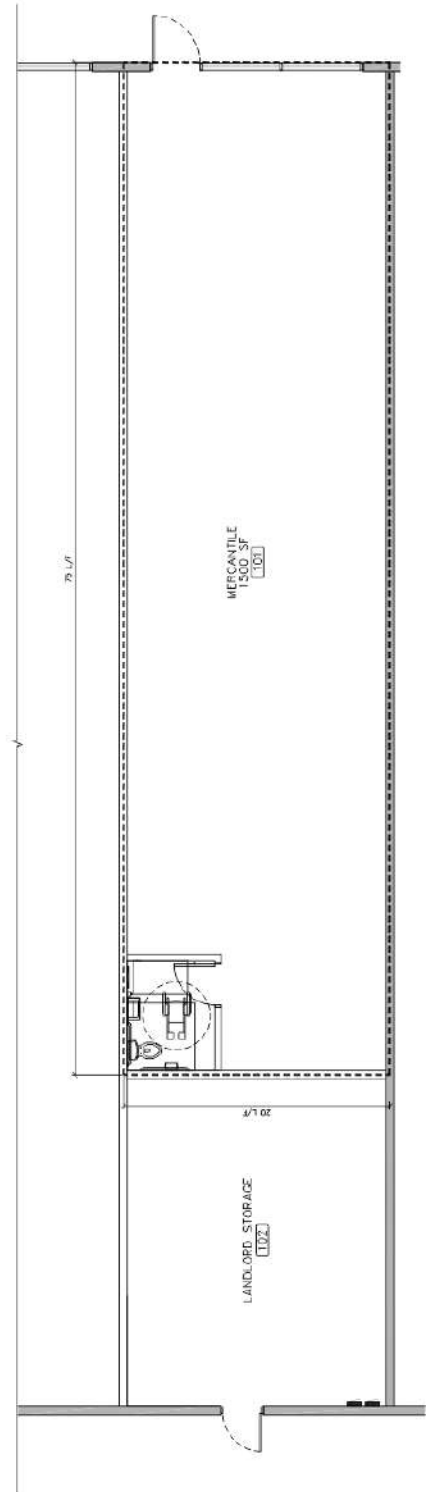
Vanilla Shell
(2,000 SF)



Restaurant Concept
(1,612 SF)



Retail Concept
(1,500 SF)



 Unit 13 - Photos

