

For Lease

GONYEA
COMMERCIAL PROPERTIES, INC.

Portland Corporate Center **12400 Portland Avenue** **Burnsville, Minnesota 55337**



GREAT Office Space Located Near 35W & to HWY 13

**For Further
Information:**

Hunter Stanek

Office: 612.500.7997

Fax: 952.894.2252

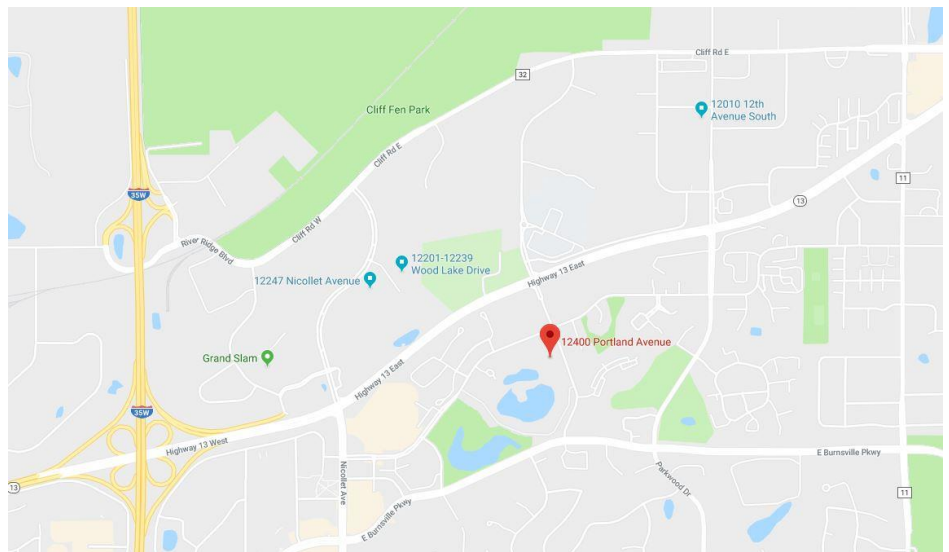
hunter@gcpmn.com

Joe Solheid

Office: 952.894.4757

Fax: 952.894.2252

joe@gcpmn.com



Portland Corporate Center

12400 Portland Avenue, Burnsville, MN 55337

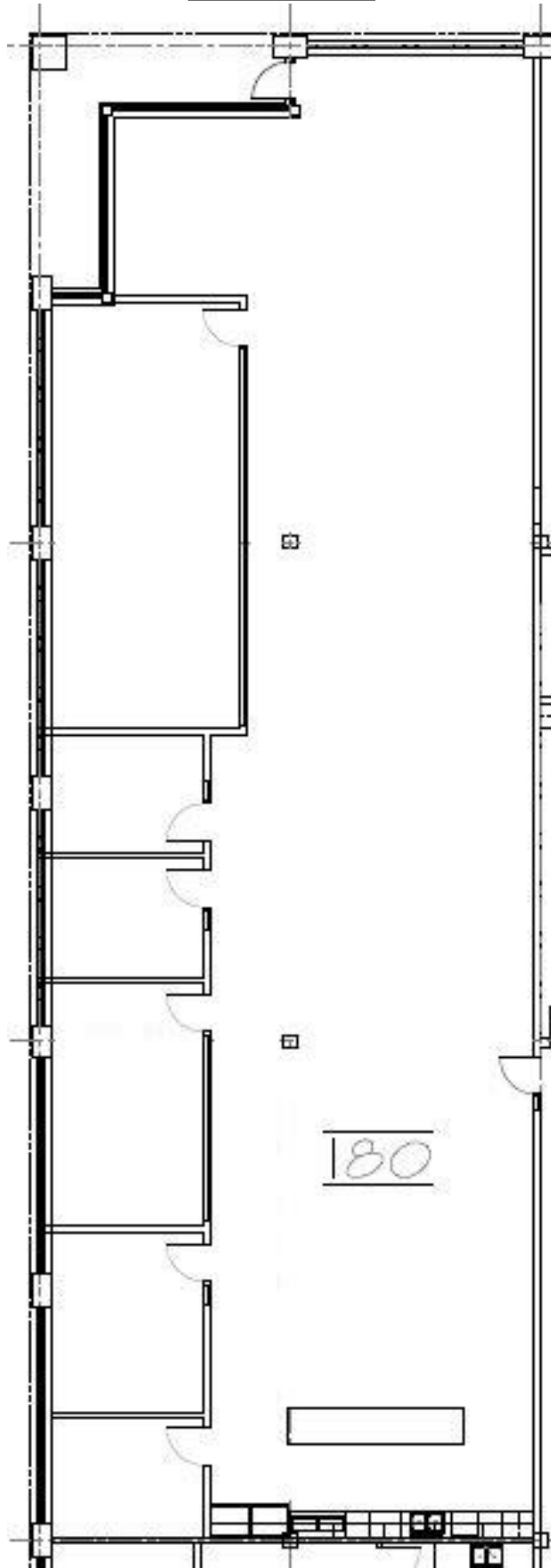
- | | |
|--|--|
| <input type="checkbox"/> SPACE AVAILABLE: | Suite 180
Office: 5,494 Square Feet |
| <input type="checkbox"/> BUILDING SIZE: | 40,009 Square Feet |
| <input type="checkbox"/> FLOOR: | First Floor |
| <input type="checkbox"/> NET RENTAL RATES: | \$10.00 per square foot |
| <input type="checkbox"/> ESTIMATED TAX/CAM: | \$9.89 per square foot |
| <input type="checkbox"/> YEAR BUILT: | 1987 |
| <input type="checkbox"/> PARKING RATIO: | 4.1/1000 Square Feet |
| <input type="checkbox"/> AMENITIES: | +Shared conference room
+Walking Path
+Beautiful Pond
+Monument Signage
+Convenient to HWY 13 and 35W
+Restaurants, hotels and other retail
locations close by. |
| <input type="checkbox"/> COMMENTS: | Furniture can either stay or be removed. |

FOR INFORMATION AND AVAILABILITY CONTACT:

**HUNTER STANEK
612-500-7997**

**JOE SOLHEID
952-894-4757**

Suite 180



Entrance