



CAPITOL & IDAHO

702 W IDAHO STREET, BOISE, ID 83702

DOWNTOWN OFFICE SPACE FOR LEASE

LEASE DETAILS

| | | | |
|------------------|-------------|-------------------|-----------------|
| SUBMARKET | Downtown | FLOORS | 12 |
| AVAILABLE | Immediately | PARKING | Attached Garage |
| QUALITY | Class A | LEASE TERM | Negotiable |
| BLD. SIZE | 100,468 SF | LEASE TYPE | Full Service |

AVAILABLE SPACE

| SPACE | RSF | RATE |
|-----------|----------|---------------|
| 2nd Floor | 6,311 SF | Contact Agent |

PROPERTY HIGHLIGHTS

Class A office building.

Attached parking garage.

Beautiful downtown views.

Excellent downtown core location.

Close to restaurants, hotels, shopping and services.

Amenities include workout room with showers, break room, mail room, bike storage, and an outdoor patio area.

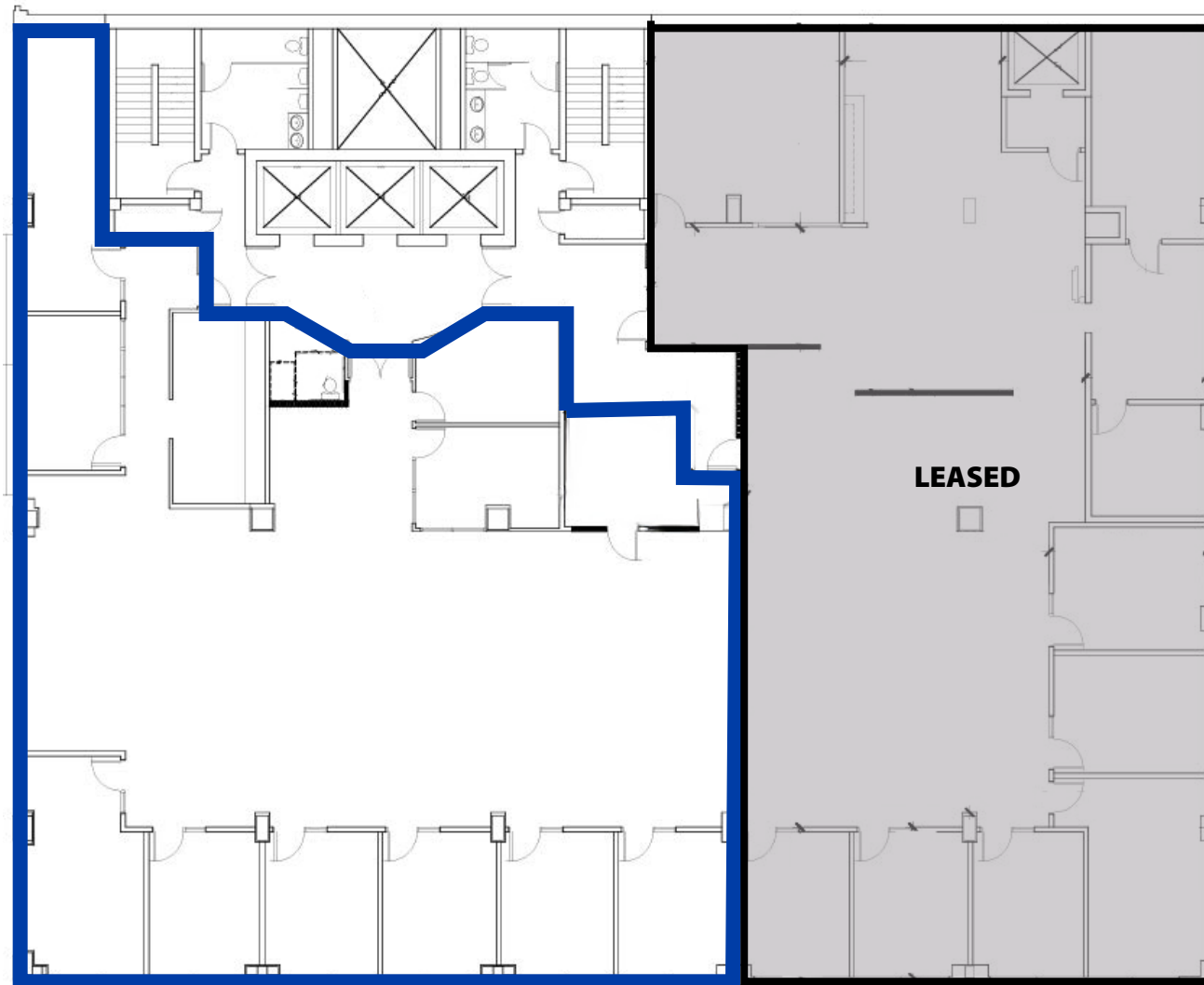


PETER OLIVER SIOR, CCIM
208.947.0816 | peter@tokcommercial.com

NICK SCHUITMAKER CCIM
208.947.0802 | nick@tokcommercial.com

MIKE GREENE SIOR, CCIM
208.947.0835 | mikeg@tokcommercial.com

2ND FLOOR 6,311 SQ. FT. AVAILABLE

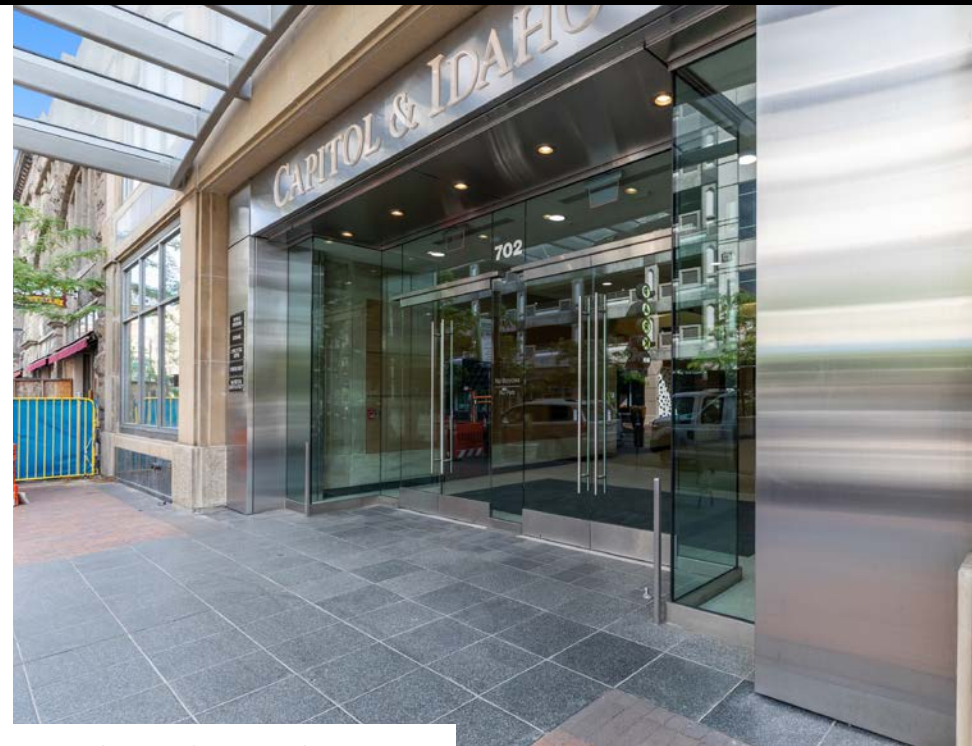


CAPITOL AND IDAHO

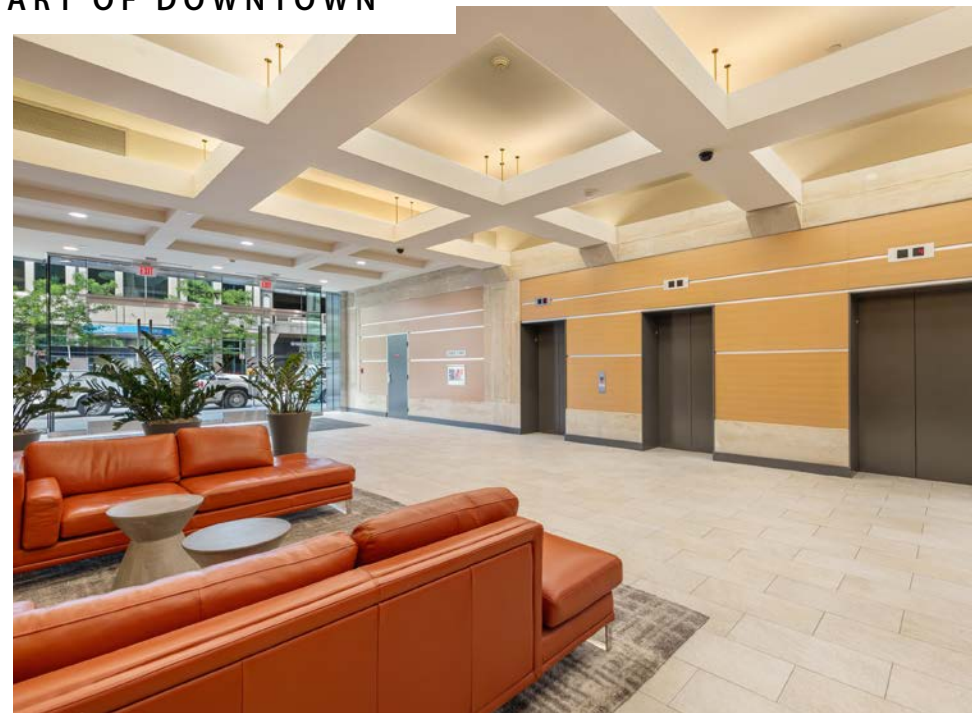
UPDATED: 10.23.2025

THIS PROPERTY IS EXCLUSIVELY MARKETING BY TOK BOISE LLC DBA TOK COMMERCIAL. This information was obtained from sources believed reliable but cannot be guaranteed. Any opinions or estimates are used for example only.

TOKCOMMERCIAL.COM



LOCATED IN THE HEART OF DOWNTOWN



CAPITOL AND IDAHO

UPDATED: 10.23.2025

THIS PROPERTY IS EXCLUSIVELY MARKETING BY TOK BOISE LLC DBA TOK COMMERCIAL This information was obtained from sources believed reliable but cannot be guaranteed. Any opinions or estimates are used for example only.



CAPITOL AND IDAHO

UPDATED: 10.23.2025

THIS PROPERTY IS EXCLUSIVELY MARKETING BY TOK BOISE LLC DBA TOK COMMERCIAL This information was obtained from sources believed reliable but cannot be guaranteed. Any opinions or estimates are used for example only.