

1605 ROCK CREEK BLVD

Joliet, IL

FOR LEASE OR SALE

JOSHUA HEARNE, SIOR
(630) 729-7933
jhearne@cawleycre.com

ANDREW BOBAK
(630) 735-8733
abobak@cawleycre.com



Specifications

Total Available: ± 15,180 SF

Warehouse: ± 9,658 SF

Office: ± 2,780 SF

Mezzanine: ± 2,742 SF

Loading: 1 Dock (*Expandable to 2*)
2 Drive-in-Doors

Ceiling Height: 22'

Year Built: 2007

Zoning: I-1

Power: 3 Phase

Pricing

Lease Rate: \$14.95 PSF Modified Gross

Sale Price: Subject to Offer

- ✓ LED Lighting
- ✓ Will County Taxes
- ✓ Near I-80 & Houbolt Rd. Interchange
- ✓ 5 Minutes to I-55



DISCLAIMER: The information contained in this marketing brochure has been secured from sources we believe to be reliable. All information is presented "as is" and Cawley CRE makes no representations or warranties, expressed or implied, as to the accuracy of the information. All information references to, but not limited to, acreage, square footage, age and other measurements are approximations, based on reliable sources. All interested parties to purchase, or to lease, should conduct an independent, thorough, investigation of the property, and verify all information. Any reliance on the information contained within this marketing material is solely at your own risk, and the interested party bears all risk for any inaccuracies. The property owner reserves the right, at its sole discretion, to reject any offer or expressions of interest, and/or to terminate, or withdraw status of availability, at any time, without notice.

1605 ROCK CREEK BLVD

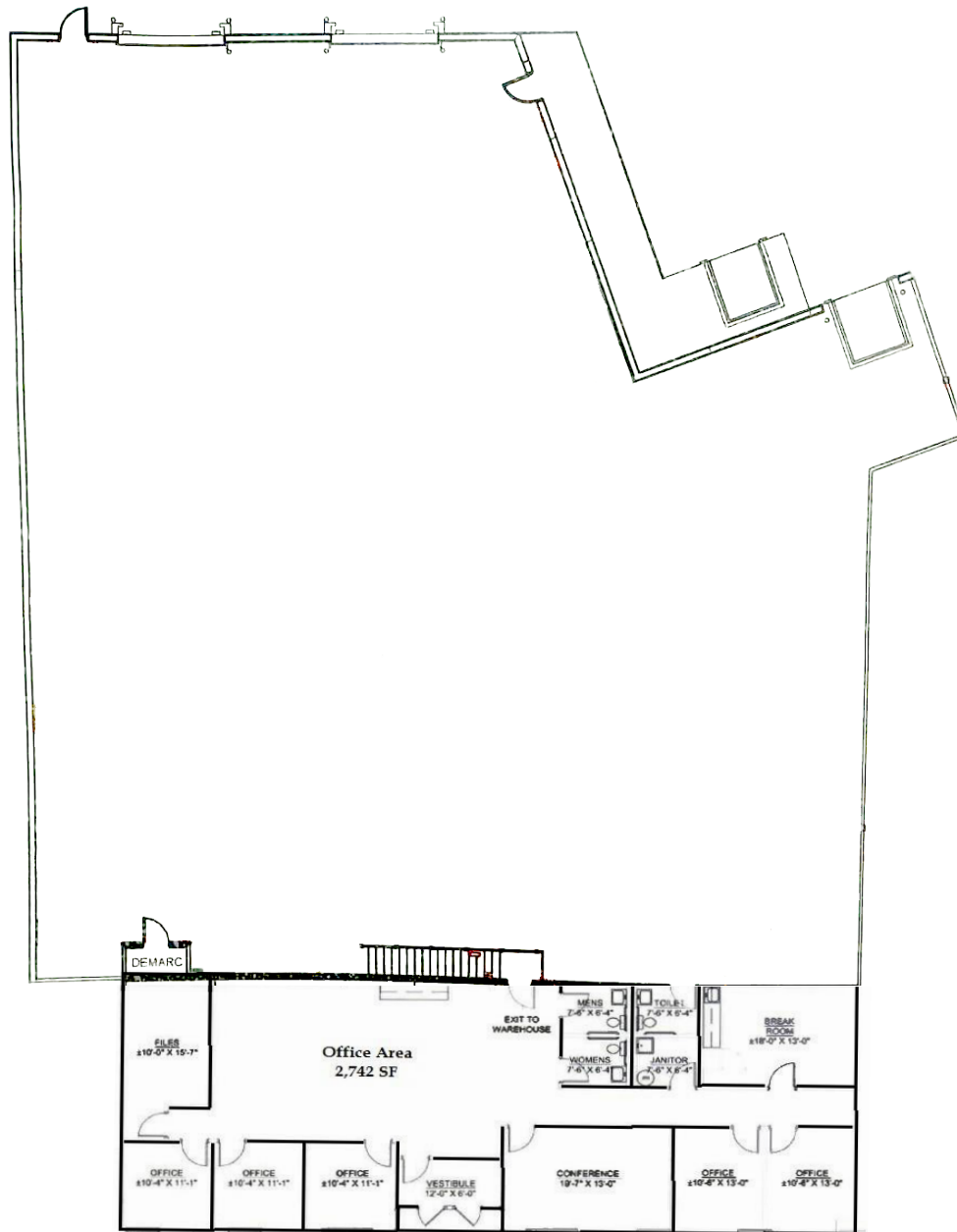
Joliet, IL

FOR LEASE OR SALE

JOSHUA HEARNE, SIOR
(630) 729-7933
jhearne@cawleycre.com

ANDREW BOBAK
(630) 735-8733
abobak@cawleycre.com

Building Layout



1605 ROCK CREEK BLVD

Joliet, IL

FOR LEASE OR SALE

JOSHUA HEARNE, SIOR
(630) 729-7933
jhearne@cawleycre.com

ANDREW BOBAK
(630) 735-8733
abobak@cawleycre.com

Interior Photos



1605 ROCK CREEK BLVD

Joliet, IL

FOR LEASE OR SALE

JOSHUA HEARNE, SIOR
(630) 729-7933
jhearne@cawleycre.com

ANDREW BOBAK
(630) 735-8733
abobak@cawleycre.com

Location Overview

