

# FOR LEASE



INLAND  
EMPIRE

± 1,225 SQ.FT. UNIT

9213 ARCHIBALD AVE., RANCHO CUCAMONGA, CA 91730



## PROPERTY FEATURES

**Address:** 9213 Archibald Ave.,  
Rancho Cucamonga, CA 91730

**APN:** 0209-541-08-0000

**Building Size:** ±1,225 sq.ft.

**Zoning:** Neo Industrial (NI) per the City of  
Rancho Cucamonga, CA

## PROPERTY HIGHLIGHTS

- Corner Unit
- Existing Office Build-Out (See Floor Plan)
- Building Signage Available, with High Traffic Visibility from Archibald Ave. (±30,000 Vehicles per Day)
- Ample Free Parking
- ±1.2 Miles From I-10 Freeway & Archibald Ave., On/Off Ramp





**FOR LEASE**  
**± 1,225 SQ.FT. UNIT**

9213 ARCHIBALD AVE., RANCHO CUCAMONGA, CA 91730

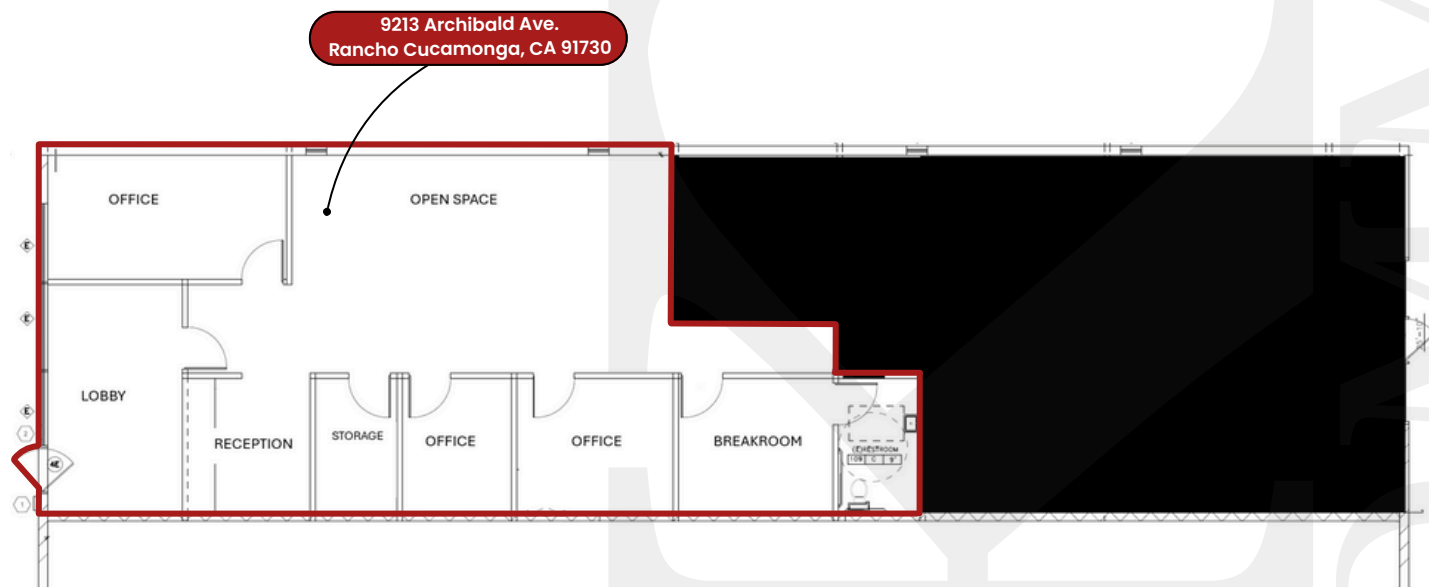


**INLAND  
EMPIRE**

## ADDITIONAL PICTURE



## FLOOR PLAN



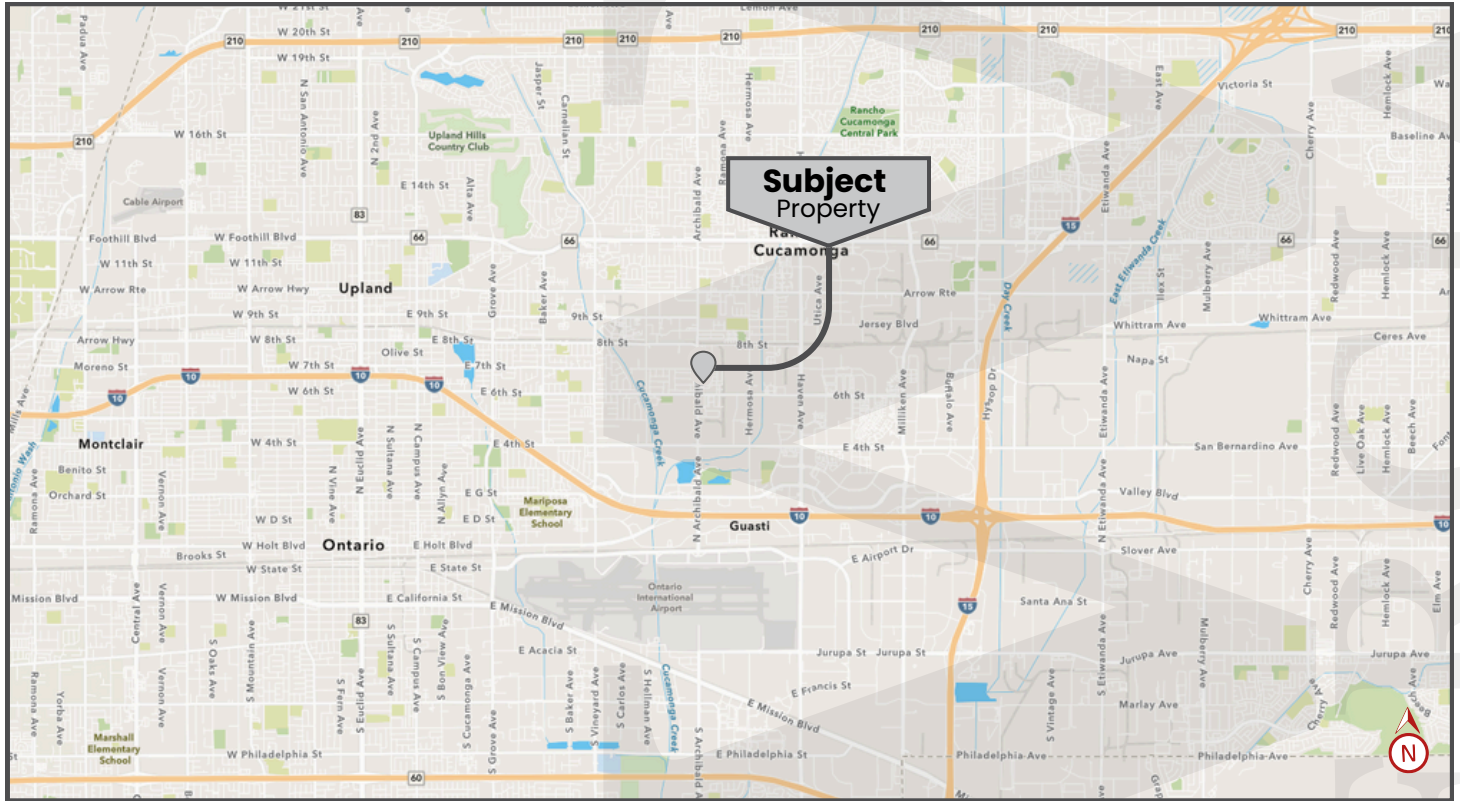


**FOR LEASE**  
**± 1,225 SQ.FT. UNIT**

9213 ARCHIBALD AVE., RANCHO CUCAMONGA, CA 91730



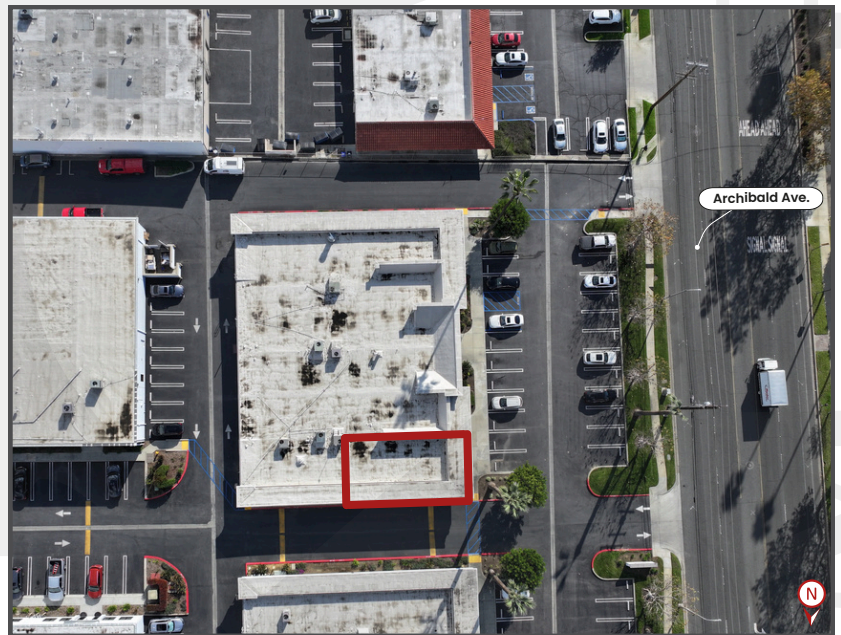
**INLAND  
EMPIRE**



**Jacob B. Bernardy**  
T(909) 935-0935  
Jacob.Bernardy@kwcommercial.com  
CalDRE Lic. #02039512

**Robert D. Bagley III**  
T(909) 935-0938  
robert.bagley@kwcommercial.com  
CalDRE Lic. #02131874

**Rene Ramos, Jr.**  
T(909) 980-6868  
Rene.Ramos@kwcommercial.com  
CalDRE Lic. #01836872



WE OBTAINED THE INFORMATION ABOVE FROM SOURCES WE BELIEVE TO BE RELIABLE. HOWEVER, WE HAVE NOT VERIFIED ITS ACCURACY AND MAKE NO GUARANTEE, WARRANTY, OR REPRESENTATION ABOUT IT. IT IS SUBMITTED SUBJECT TO THE POSSIBILITY OF ERRORS, OMISSIONS, CHANGE OF PRICE, RENTAL OR OTHER CONDITIONS, PRIOR SALE, LEASE OR FINANCING, OR WITHDRAWAL WITHOUT NOTICE. WE INCLUDE PROJECTIONS, OPINIONS, ASSUMPTIONS OR ESTIMATES FOR EXAMPLE ONLY, AND THEY MAY NOT REPRESENT CURRENT OR FUTURE PERFORMANCE OF THE PROPERTY. YOU AND YOUR TAX AND LEGAL ADVISORS SHOULD CONDUCT YOUR OWN INVESTIGATION OF THE PROPERTY AND TRANSACTION.

**KW COMMERCIAL- INLAND EMPIRE**

3595-1 Inland Empire Blvd.

Suite 1250

Ontario, CA 91764

**909.980.6868**

[www.kwcie.com](http://www.kwcie.com)